



2024 Budget

November 16, 2023



Our Region

1.6M
Residents*

Largest transportation
hub in Canada

One of the fastest growing and
diverse communities in Canada

Largest international
airport in Canada

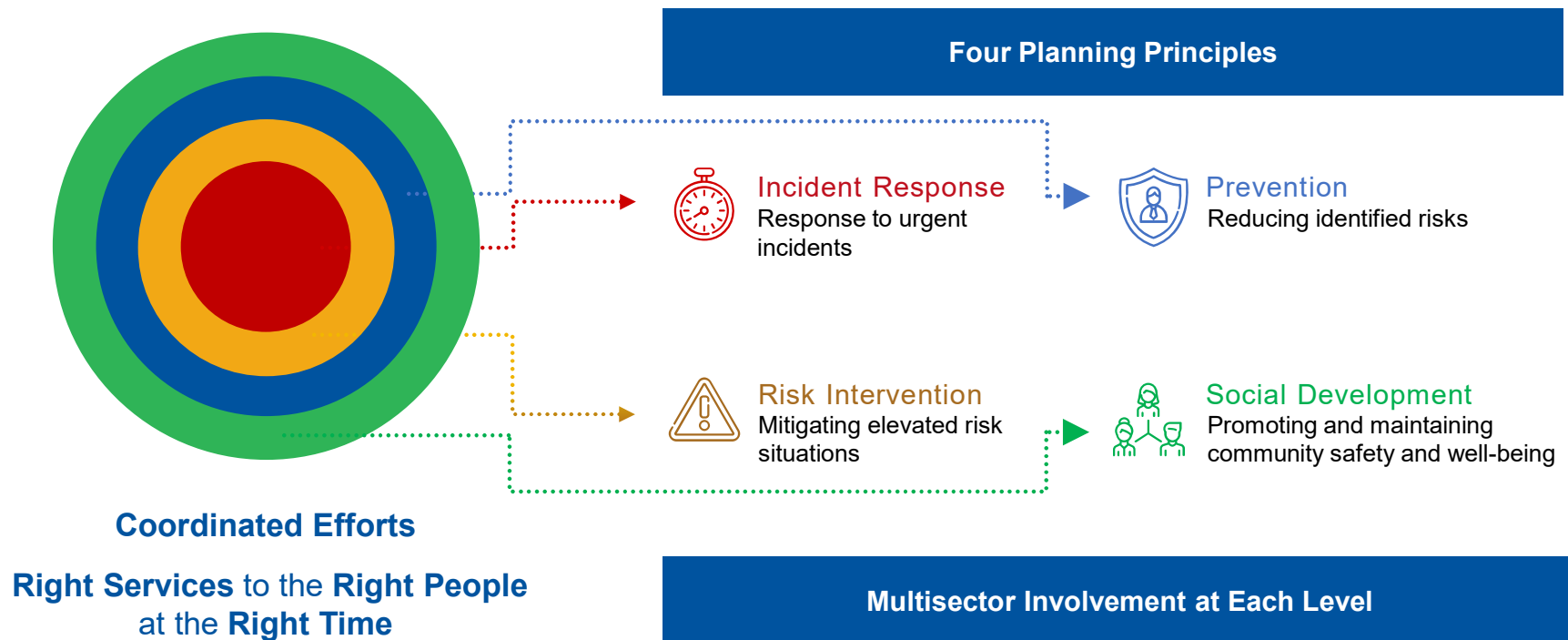
Five major
highways

Committed to Our Strategic Approach



The most **progressive, innovative and inclusive** service in Canada.

Our Guiding Philosophy





Our Areas of Accomplishments

Alternative
Crisis
Response

Culturally
Responsive, Inclusive
and Equitable

Enhanced
Education and
Enforcement

Expanding
Investigative
Capacity

Evidence-Based Decision-Making



Advancing Our Priorities



Mental Health
& Addictions



Priority
Populations



Violent
Crime



Road
Safety



Advancing Our Priorities



Alternative
Crisis Response



Community specific and
culturally responsive
frameworks



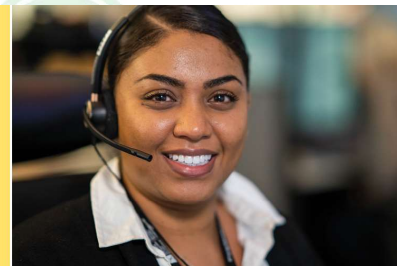
Initiatives to support youth,
seniors and newcomers

Advancing Our Priorities



CCRRT: **Community Crisis Rapid Response Team**

Crisis personnel from partner agencies attend low-risk mental health calls and provide on-site support.



ECCRRT: **Embedded Community Crisis Rapid Response Team**

Crisis personnel resolve low-risk mental health calls and assist individuals by phone.



MCCRRT: **Mobile Community Crisis Rapid Response Team**

Police and crisis personnel attend high-risk mental health calls together to provide immediate support.



COAST: **Crisis Outreach and Support Team**

Police and crisis personnel follow up on calls for assistance made through the Embedded Community Crisis Rapid Response Team.



SCRT: **Safe Centre Response Team**

Police and a mobile support worker attend intimate partner incidents to provide early intervention and support to assist families.

Peel Regional Police is proud to partner with:



For more information, please visit: PeelPolice.ca/CSWB



Advancing Our Priorities



Alternative
Crisis Response



Community specific and
culturally responsive
frameworks



Initiatives to support youth,
seniors and newcomers



Advancing Our Priorities



**MENTAL HEALTH
& ADDICTIONS
AND
PRIORITY
POPULATIONS**



Alternative
Crisis Response



Community specific and
culturally responsive
frameworks

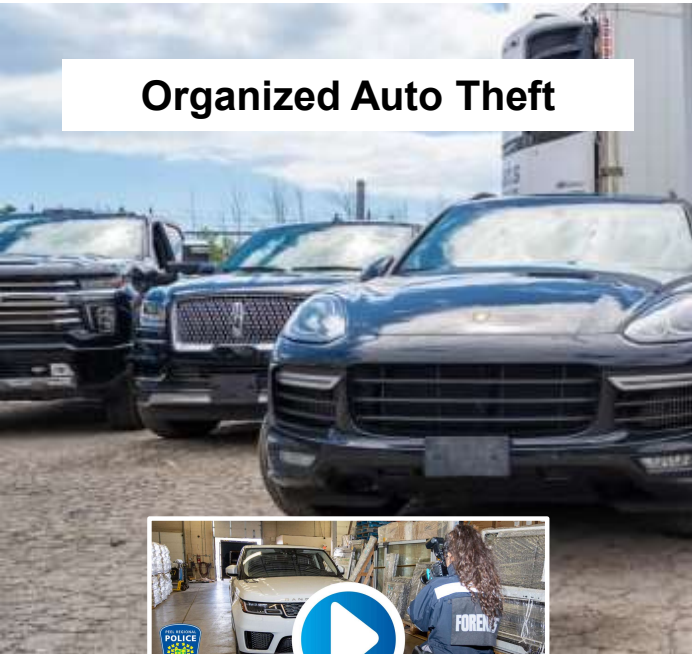


Initiatives to support youth,
seniors and newcomers

Advancing Our Priorities



Organized Auto Theft



OVER \$10 MILLION DOLLARS IN STOLEN VEHICLES RECOVERED BY PEEL REGIONAL POLICE.

Gender-Based Violence



SAFE CENTRE RESPONSE TEAM
PEEL REGIONAL POLICE
SAFE CENTRE OF PEEL LAUNCH A NEW PILOT PROJECT.

Major Incident Response



Advancing Our Priorities



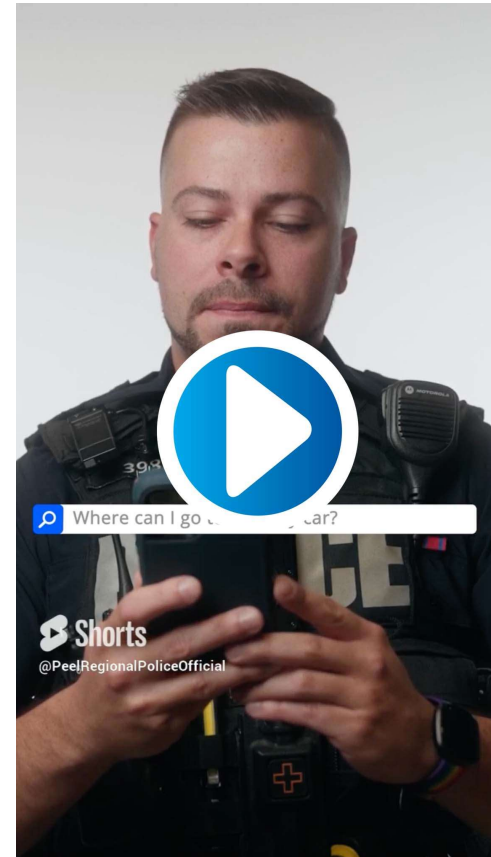
Advancing Our Priorities



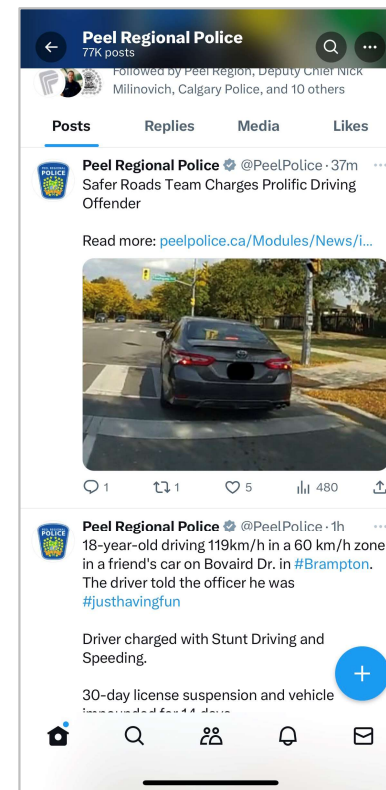
Project ERASE and Noisemaker

915 vehicles investigated	1,181 HTA related charges
651 stunt driving charges	165 improper/ no muffler charges

Advancing Our Priorities



Advancing Our Priorities



Advancing Our Priorities



Emergency: 9-1-1

Peel Regional Police Online Reporting

Driving Complaint/Road Watch ©

Start > Yourself > Incident > Person > Vehicle > Narrative > Review > Finish

Driving Complaint/Road Watch ©

Definition: File a driving complaint specific to a driver and vehicle involved in dangerous and aggressive behaviour - Road Watch ©, or file a driving complaint specific to an area, indicating the type of poor behaviour, days and most frequent times.

Examples: Poor driving behaviour including: speeding, racing, fail to stop at stop sign, noise/loud exhaust, following too closely, unsafe passing or lane changes. Note: Any report of poor driving behaviour that is neither an emergency nor is creating an immediate or imminently hazardous situation can be filed online. The online complaint cannot include a suspected impaired driver, a motor vehicle collision, an off road vehicle or waterway incident, or in circumstances where the identity of the driver is known. Any urgent or imminently hazardous behaviour should be reported to police by calling 9-1-1.

Confirm Question(s)

Is this an emergency? Yes No

Is this complaint about a suspected impaired driver? Yes No

Has there been a collision involving a vehicle, person or property? Yes No

Does this involve an off road vehicle or waterway? Yes No

Did this incident occur on the 400 series highways, on the QEW, in Caledon or in Bolton? Yes No

<<<< Back Continue >>>>



Advancing Our Priorities



Festive R.I.D.E Campaign

296
highway traffic act charges

171
three-day suspensions

126
Impaired by alcohol charges

8
Impaired by drug charges

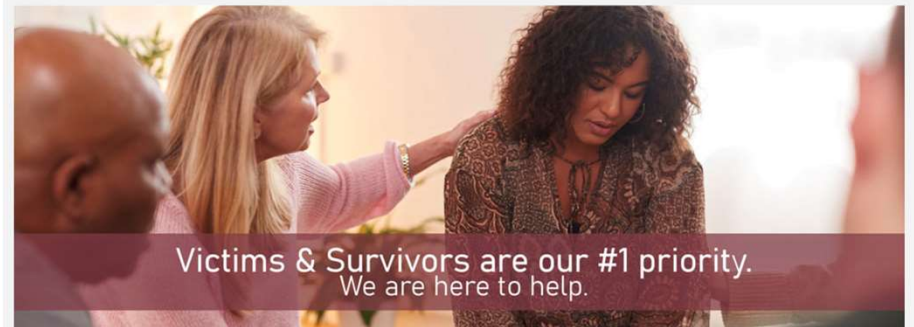
Advancing Our Priorities



madd
Peel Region

Peel Regional Police
7750 Hurontario Street, Brampton ON L6Y 5A8
(905) 453-2121 ext. 3792
Claudia.D'amico@peelpolice.ca

[Home](#) [About Us](#) [Services & Programs](#) [Volunteering](#) [Giving](#) [News & Events](#) [Contact Us](#) [Q](#)



Investing in Wellness



When you're good on the inside, you are good on the outside.



Wellness Strategy



Education and Leadership Development Opportunities



Internal Support Networks



Continuous Community Growth

Increased Call Volume

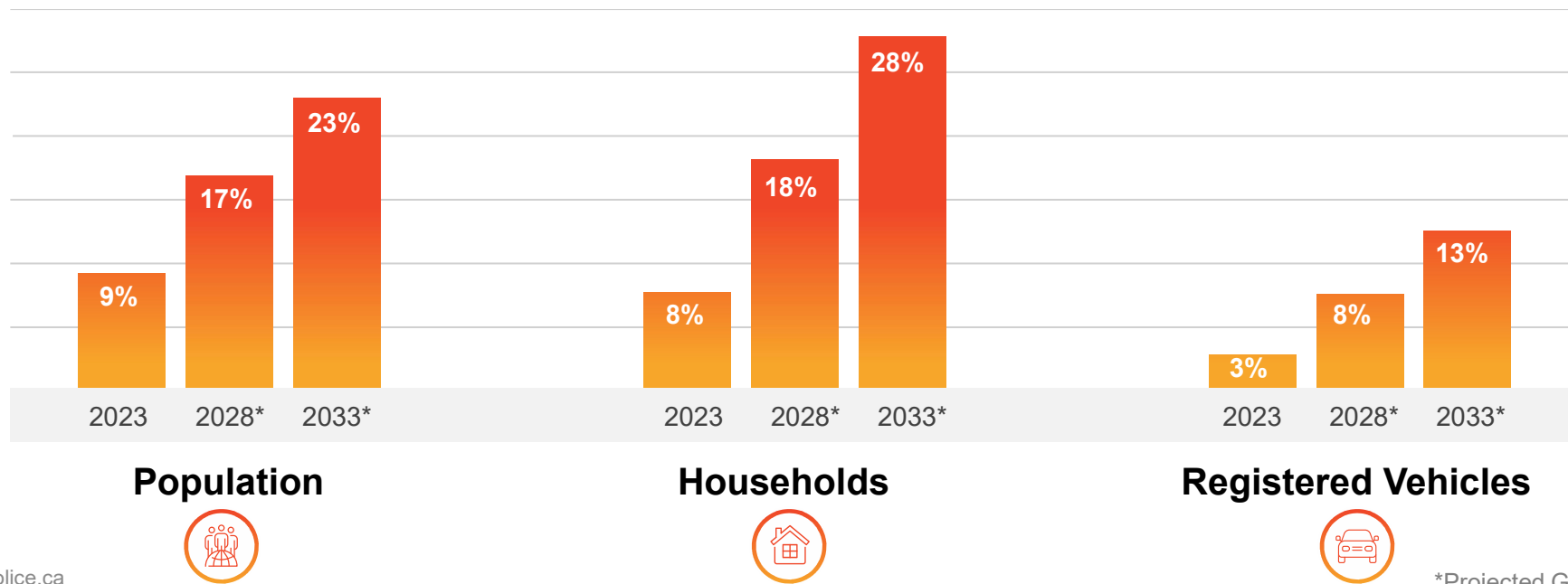
Technology Pressures

Current State

Continuous Community Growth

Increase in population growth, multigenerational households as well as registered vehicles means more demands on our services.

Growth Since 2018



Call Volume Growth

Calls to Communications



9-1-1 Calls Received



Non-Legit Calls Received



WHAT IS AN EMERGENCY?
OPERATOR: 9-1-1 Do you need Police, Fire or Ambulance?
CALLER: Hi, I got my cat stuck on a building...on the building.

#911whatseps PeelPolice.ca/911



9-1-1 Wait and Police Response Times

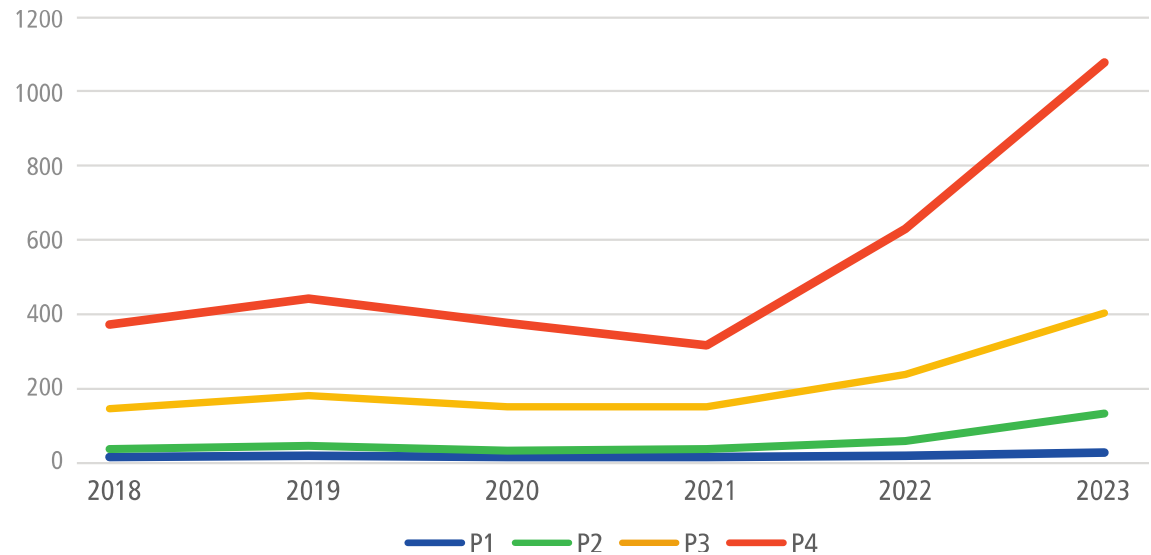
Average 9-1-1 Wait Time

50s

-35%
since
2022

National Standard
90% of 911 calls answered
within 15 seconds

Average Response Time by Priority

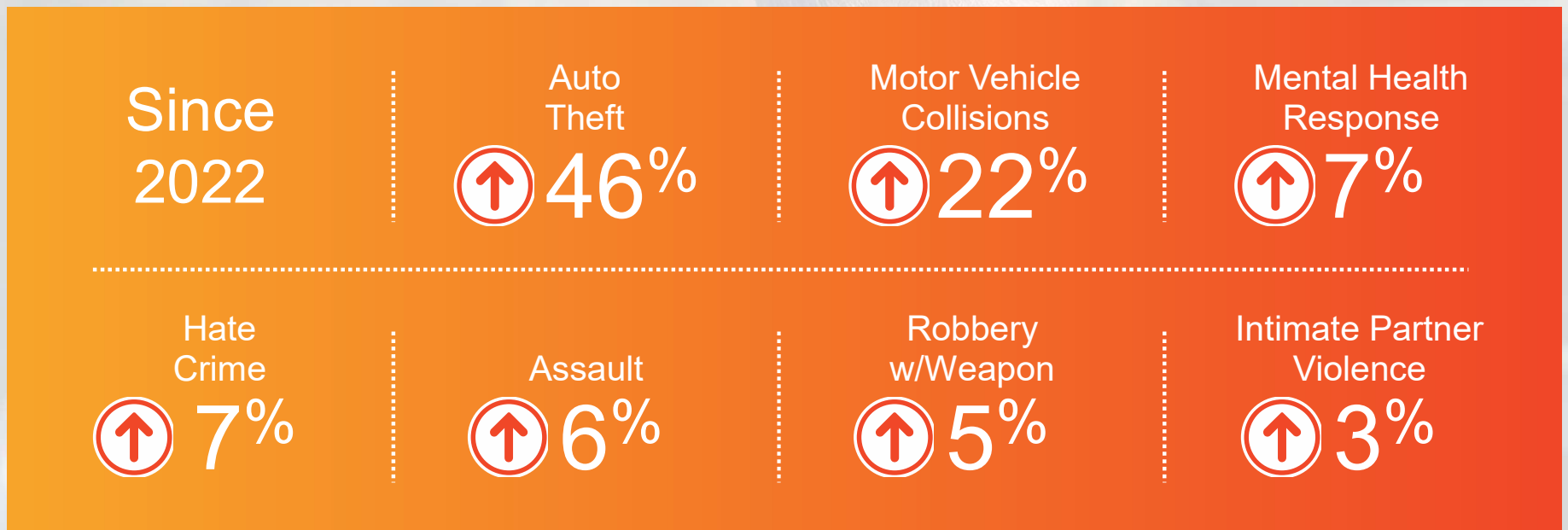


Resources added in 2023:  10 communicators

 70 uniform officers

 13 special constables

Community Pressures



YTD as of September 2023

Technology Transformation Pressures



peelpolice.ca



Innovative and legislative
technology advancements



Technology and data cyber
security enhancement



Aging infrastructure
and growing workforce

Officers Per Population

Common denominators include population 1M+, growth rates, urban density, international airport and crime severity index.



Montreal (population 2M)

227.8



Edmonton (population 1.1M)

186.1



Toronto (population 3M)

167.7



Calgary (population 1.4M)

155.4



Peel (population 1.5M)

142.0



| Staffing

| Infrastructure

| Technology

Moving Forward

Facilities to Support Community Growth

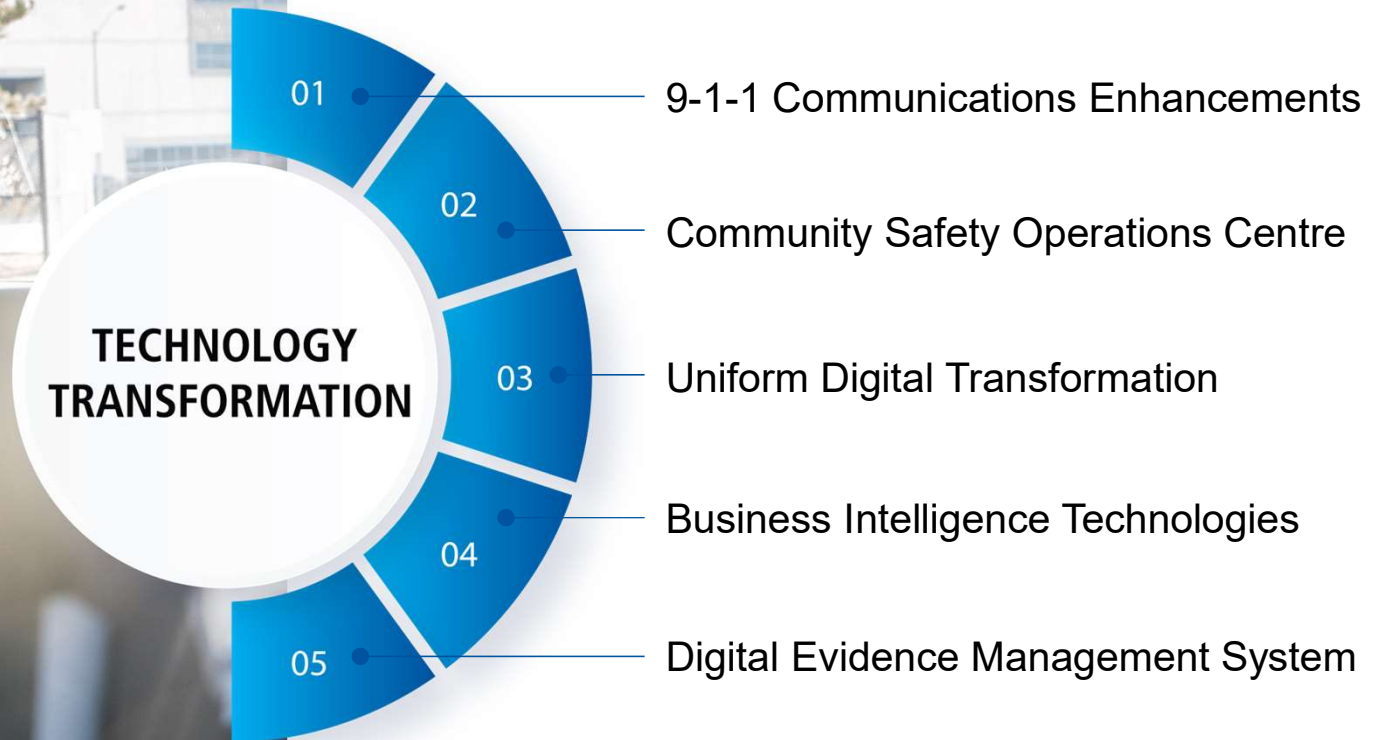


New South Division
 Effective deployment of resources across southern band of divisions.

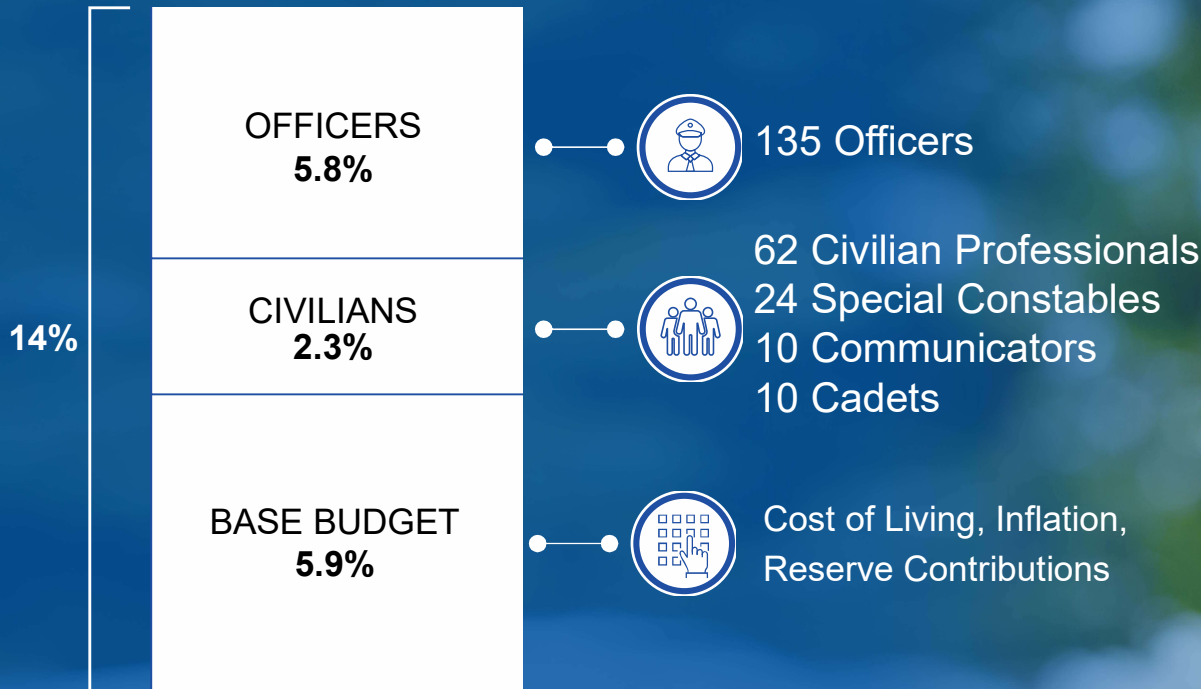
Additional Facilities

- **Sir Robert Peel Addition (Phase 3: Corporate Development)**
 Added capacity to train new members
- **21 Division Renovation**
 Increased divisional capacity to better serve North/East Brampton
- **Intimate Partner Violence/ Safe Centre of Peel Expansion**
 New space designated as a south/central location for the Intimate Partner Violence Unit

Technology Transformation for Community Safety



2024 Operating Budget



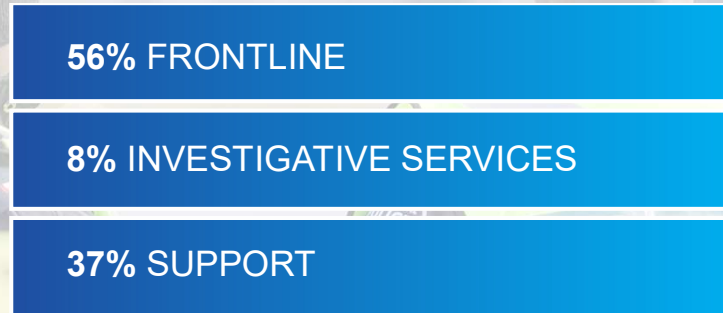
Deployment



Uniform Officers



Civilian Professionals



Community Priorities

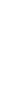
Response Times



Auto Crimes



Gender-Based Violence



Road Safety



Major Incident Response



Robberies

2024 Capital Budget



Future Vision

-  Continued growth to meet increased service demand
-  New and updated infrastructure to be complete and operational
-  Technology that enables efficient and effective response





Thank You