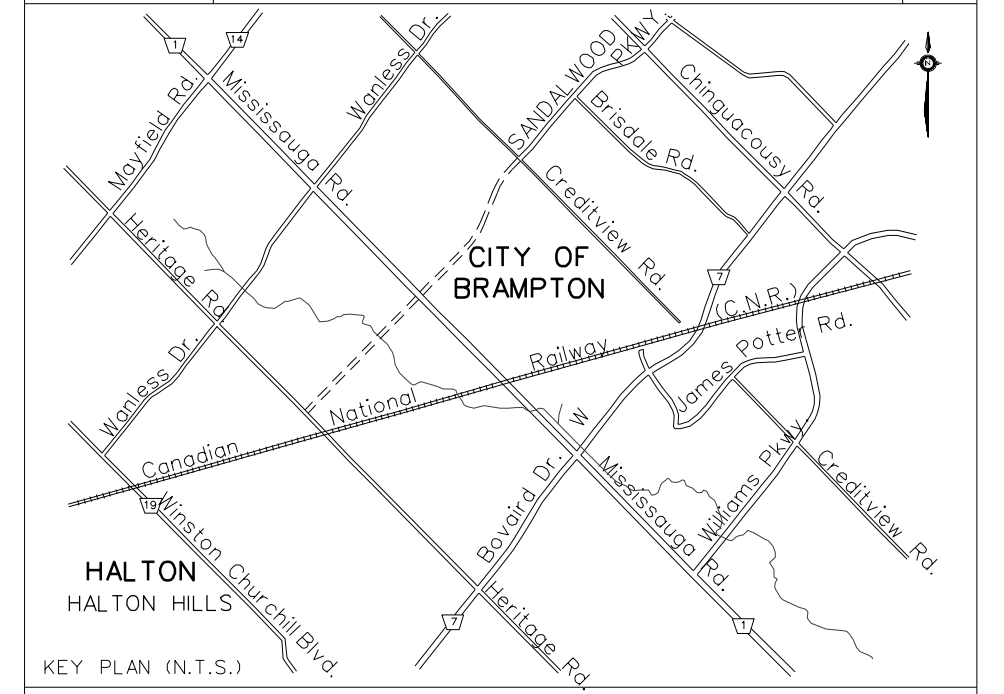


MATCH LINE - STA 2+980
SEE DRAWING PP08

MATCH LINE - STA 2+700
SEE DRAWING PP06

SERVICE DATA					
SERVICE	DATE	INIT.	SERVICE	DATE	INIT.
SAN SEWERS			GAS MAINS		
STORM SEWERS			BELL U/G CABLE		
WATERMANS			HYDRO U/G CABLE		
TRANSIT			ONT. HYDRO		
PARKS & REC.			CTV		
ONT. CLEAN WATER					



AECOM

AECOM CANADA Ltd.
300 TOWN CENTRE BLVD., MARKHAM,
ONTARIO, CANADA L3R 5Z6
T905.477.8700 F905.477.1456

General Notes

- All Driveways ASPHALT Unless Otherwise Noted.
- All Service Locations Are Approximate And Must Be Located Accurately In The Field
- ⊙ Denotes Building - Not Located
- ⊙ Denotes Building Located
- Type 'B' Bedding Unless Otherwise Noted (SAN)

B.M. No. Elev.

The Contractor is Responsible For Locating And Protecting All Existing Utilities Prior To And During Construction Location of Existing Utilities Approximate Only, To Be Verified In Field By Contractor.

Designed by _____ Chkd _____ Approved by _____

NOTICE TO CONTRACTOR

48 HOURS PRIOR TO COMMENCING WORK NOTIFY THE FOLLOWING

THE REGIONAL MUNICIPALITY OF PEEL
CITY OF MISSISSAUGA WORKS DEPT.
CITY OF BRAMPTON WORKS DEPT.
TOWN OF CALEDON WORKS DEPT.
BELL TELEPHONE COMPANY
CONSUMERS GAS COMPANY
MINISTRY OF TRANSPORTATION
ONTARIO CLEAN WATER AGENCY
HYDRO ELECTRIC POWER COMM. OF ONTARIO
HYDRO ELECTRIC COMM. CITY OF MISSISSAUGA
HYDRO ELECTRIC COMM. CITY OF BRAMPTON
CABLE TELEVISION

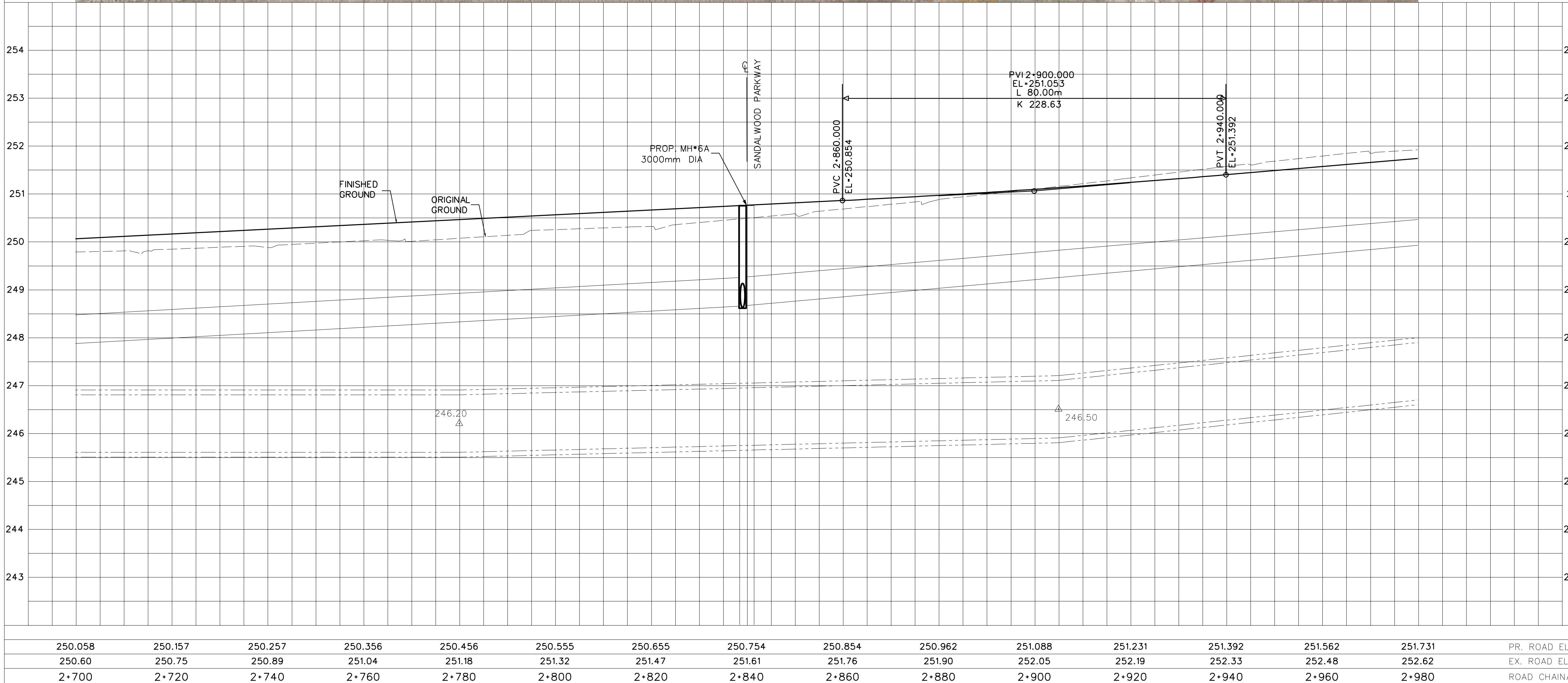
10m 0 10 20 30m HORIZONTAL SCALE
1m 0 1 2 3m VERTICAL SCALE

Region of Peel
Working for you

MISSISSAUGA ROAD
(FROM BOVAIRD DR. TO MAYFIELD RD.)
PLAN AND PROFILE

Sta. 2+700.00 To Sta. 2+980.00

PR. ROAD ELEV.	Lots	Area	Project No.
EX. ROAD ELEV.	Checked by P.C.	Drawn by V.M.	105163
ROAD CHAINAGE	Date NOV 2012	Sheet 7 of 19	Plan No. PP07



250.058	250.157	250.257	250.356	250.456	250.555	250.655	250.754	250.854	250.962	251.088	251.231	251.392	251.562	251.731	PR. ROAD ELEV.	Lots	Area	Project No.
250.60	250.75	250.89	251.04	251.18	251.32	251.47	251.61	251.76	251.90	252.05	252.19	252.33	252.48	252.62	EX. ROAD ELEV.	Checked by P.C.	Drawn by V.M.	105163
2+700	2+720	2+740	2+760	2+780	2+800	2+820	2+840	2+860	2+880	2+900	2+920	2+940	2+960	2+980	ROAD CHAINAGE	Date NOV 2012	Sheet 7 of 19	Plan No. PP07