



# RIVERSTONE

ENVIRONMENTAL SOLUTIONS INC.

March 4, 2020  
RS# 2016-008

**Allan Ortlieb**  
**Associate**

**IBI Group**

100 - 175 Galaxy Blvd

Toronto, ON

M9W 0C9

via email: [Allan.Ortlieb@IBIGroup.com](mailto:Allan.Ortlieb@IBIGroup.com)

**SUBJECT: Tree Inventory and Preservation Plan – Cawthra Rd. Improvements (Eastgate Parkway to South Service Road, Region of Peel).**

Dear Allan,

RiverStone Environmental Solutions Inc. (hereafter, “RiverStone”) was retained by IBI Group on behalf of the Regional Municipality of Peel (hereafter, “the Region”) to prepare a Tree Inventory and Protection Plan as part of the preliminary or detailed design process for improvements to Cawthra Road between South Service Road and Eastgate Parkway (**Figure 1**). Cawthra Road is a major north-south arterial road under the jurisdiction of the Region. The section of Cawthra Road to be improved is approximately 5.6 km in length and traverses both residential and commercial developments. The proposed road improvements principally consist of resurfacing, widenings at intersections to accommodate turning lanes and upgrading of sections of sidewalks.

It is our understanding that the requirement for a *Tree Assessment and Preservation Plan* is triggered by By-law No. 254-12 which provides guidance on protection of trees in Mississauga with replacement for trees greater than 15 cm diameter at breast height (DBH). Riverstone’s on-site tree inventory was therefore conducted in a manner consistent with this By-law. A Natural Environment report has also been prepared in support of the Class Environmental Assessment by RiverStone under a separate cover.

## **APPROACH AND METHODS**

### **Site Investigation**

The tree inventory and health assessment were carried out on October 12 and 22, 2018, by Will Barbour and Craig Mann (Ecologists/ISA-certified Arborists). All trees 10 cm diameter at breast height (DBH) or greater and located within approximately 6 m of the limit of disturbance (hereafter ‘Project Area’, **Figure 1**) were inventoried and assessed. This area generally falls within the right of way for Cawthra Rd. and associated intersecting roadways. Such trees were: (1) inventoried using metal number-stamped tags, (2) identified to species, (3) measured at approximately 1.37 metres above ground with tree calipers, (4) assessed for defects and indicators of decline (e.g., open wounds, broken

branches, etc.), and 5) digitized with a high accuracy GPS receiver. Based on the information collected, an overall visual assessment of tree health and structural integrity is provided, supported by preservation/removal direction based on their location within the project area. Notwithstanding the above, it must be recognized that all trees (in good health or otherwise) have the potential for failure given adverse weather, damage due to mechanical injury, or other factors that cause stress. A general assessment of trees that occur on adjacent lands within 6 m of the area of disturbance also occurred during the tree inventory. No trees located on private lands have been included in the scope of the inventory outlined herein. Additionally, trees associated with the interchange at the Queen Elizabeth Way (QEW) were not included in this inventory as they fell outside of the area of anticipated impact as per the preliminary design provided by IBI.

### **Impact Assessment**

A figure of the proposed preliminary recommended plan was provided by IBI to RiverStone (emailed Nov 05, 2018). Based on this figure, RiverStone has illustrated the proposed preliminary recommended plan graphically in **Figure 3A-F**. The proposed improvements to Cawthra Rd. include resurfacing, widenings at intersections to accommodate turning lanes, and upgrading of active transportation infrastructure. This Tree Inventory and Preservation Plan was conducted based on impacts to trees as a result of construction activities and the new footprint of Cawthra Rd.

### **Assessment of Conformance with Applicable Tree Protection Policies**

This study has been conducted in accordance with bylaw 254-12 the City's private Tree Protection Policy and Tree Protection procedure to protect trees on private lands during the Class Environmental Assessment process. Based on construction drawings, there are no anticipated tree removals on private land. Policy related to Tree Protection Zones (TPZ) for trees within City of Mississauga lands and compensation for tree removal and guidelines for removal followed guidance documents related to site plan and development application on the Forest section of the City of Mississauga website. These documents included the forestry fees and charges effective January 1, 2018 – December 31, 2018 and Development and Design Construction Hoarding (Jan. 2008).

In December 2005, the Region of Peel passed a bylaw allowing for the City of Mississauga to regulate tree removal in woodland greater than of larger than 1 ha. There are no woodlands that meet this size within the study area, however Cawthra Woods located on adjacent lands meets this criterion. Based on propose contract drawing, there will be no requirement for tree removals in Cawthra Woods and therefore this policy is not relevant.

This report may also be used to assist Credit Valley Conservation (CVC) Authority and Toronto Region Conservation Authority (TRCA) with review of the preliminary recommended plan for impacts within an area regulated under O. Reg. 160/06 (CVC) and O.Reg. 166/06 (TRCA) pursuant to the *Conservation Authorities Act, 1990*. The approximate boundary of CVC/TRCA jurisdiction within this project site is the intersection of Cawthra Rd and Burnhamthorpe Rd. (TRCA to the north, CVC to the south).

CVC documents reviewed during the preparation of this document included CVC's Plant Selection Guidelines (April 2018), CVC's Watershed Planning and Regulation Policies (2010) and Erosion and Sediment Control guidelines for Urban Construction (December 2006).

## **TREE INVENTORY AND HEALTH ASSESSMENT**

The results of the tree inventory and health assessment are provided in **Appendix 1**. The locations of all tagged and assessed trees > 10 cm DBH are shown in **Figure 2A-F**.

Three hundred and thirty (330) trees were tagged and assessed. Tree composition and abundance within the study area is summarized below in **Table 1**. Of the thirty-one (31) tree species present along Cawthra Rd., Norway Maple (*Acer platanoides*) were the most abundant.

**Table 1. Composition and Abundance of Trees > 10 cm DBH within and/or adjacent to the Areas of Disturbance.**

<b>Species</b>	<b>Total Assessed</b>	<b>Percentage of Total</b>
Austrian Pine ( <i>Pinus nigra</i> )	17	5.15
Balsam Fir ( <i>Abies balsamea</i> )	3	0.90
American Basswood ( <i>Tilia americana</i> )	2	0.60
Black Walnut ( <i>Juglans nigra</i> )	2	0.60
Bur Oak ( <i>Quercus macrocarpa</i> )	1	0.30
Colorado Blue Spruce ( <i>Picea pungens</i> )	14	4.24
Crab Apple ( <i>Malus coronaria</i> )	32	9.69
Crimson King Norway Maple ( <i>Acer platanoides</i> )	1	0.30
Eastern White Cedar ( <i>Thuja occidentalis</i> )	1	0.30
English Oak ( <i>Quercus robor</i> )	2	0.60
Freeman Maple ( <i>Acer x fremanii</i> )	1	0.30
Green Ash ( <i>Fraxinus pennsylvanica</i> )	4	1.21
Honey Locust ( <i>Gleditsia triacanthos</i> )	22	1.21
Illinois Everbearing Mulberry ( <i>Morus alba x Morus rubra</i> )	4	0.30
Ivory Silk Lilac ( <i>Syringa reticulata</i> )	4	0.60
Juniper ( <i>Juniperus communis</i> )	1	0.90
Littleleaf Linden ( <i>Tilia cordata</i> )	2	1.21
Manitoba Maple ( <i>Acer negundo</i> )	3	0.90
Northern Catalpa ( <i>Catalpa speciosa</i> )	4	1.21
Norway Maple ( <i>Acer platanoides</i> )	121	36.66
Norway Spruce ( <i>Picea abies</i> )	6	1.81
Ornamental Cherry ( <i>Prunus sp</i> )	6	1.81
Ornamental Pear ( <i>Pyrus sp</i> )	17	5.15
Northern Red Oak ( <i>Quercus rubra</i> )	2	0.6
Russian Olive ( <i>Elaeagnus angustifolia</i> )	6	1.81
Siberian Elm ( <i>Ulmus pumila</i> )	5	1.51
Silver Maple ( <i>Acer saccharinum</i> )	34	10.3
White Oak ( <i>Quercus alba</i> )	1	0.30
White Pine ( <i>Pinus strobus</i> )	5	1.51
White Poplar ( <i>Populus alba</i> )	1	0.30
White Spruce ( <i>Picea glauca</i> )	5	1.51
Willow sp ( <i>Salix sp</i> )	1	0.30
<b>TOTAL</b>	<b>330</b>	<b>100</b>

## **IMPACT ASSESSMENT AND RECOMMENDATIONS**

Results of the onsite tree inventory identified 106 trees within approximately 10 m of the limit of disturbance. These trees have the potential to be negatively impacted during grading, construction, and other activities associated with implementation of the preliminary recommended plan via the following pathways:

- Direct tree removal in areas where trees conflict with the areas of site alteration (e.g., grading, etc.);
- Mechanical injury to the trunk, roots, branches, and/or foliage during construction activities;
- Soil compaction within the rooting zone; and
- Smothering or exposure of roots as a result of changes in grade.

Based on a review of the proposed improvements to Cawthra Road (**Figure 3A-F**) a total of fifty-eight (58) trees require removal (**Appendix 1**). Minor impact/disturbance to the root system of trees recommended for retention that occur within proximity to the road improvements may also occur given their proximity to the area of disturbance.

To minimize ecological impacts associated with the direct tree removals, RiverStone recommends the following measures:

- **Vegetation removal (e.g., tree/shrub clearing, grading of open areas, etc.) should be completed outside of the primary breeding bird nesting window (i.e., between April 1 and August 31). If vegetation removal occurs during this period, a nest survey should be conducted by a qualified biologist within 5 days of commencement of construction activities to identify and locate active nests of bird species (where present) covered by the federal *Migratory Bird Convention Act, 1994* or provincial *Fish and Wildlife Conservation Act, 1997*. If a nest is located or evidence of breeding noted, a mitigation plan should be developed to avoid any potential impacts on birds or their active nests. Mitigation may require establishing appropriate buffers around active nests or delaying construction activities until the conclusion of the nesting season.**

As a means to protect the retained trees as indicated on **Figure 3A-F**, RiverStone recommends the following measures:

- **Tree protection fencing should be installed to protect the root systems at the dripline distance from each tree trunk adjacent to construction activities according to Driplines in Appendix 1. No site alteration activities (e.g., grading, etc.), machinery movement, or storage of any equipment or materials should occur within the tree protection fencing.**
- **In the event of mechanical injury to any trees recommended for retention and/or their branches, or if pruning is required to provide clearance for construction machinery, the following actions are recommended:**
  - **Prune damaged limbs cleanly and according to standard arboricultural practices.**
  - **Prune damaged roots that have been exposed cleanly and according to standard arboricultural practices.**
  - **Trim loose bark but avoid enlarging any open wounds.**

#### **CONFORMANCE WITH THE CITY OF MISSISSAUGA TREE PRESERVATION BY-LAW NO. 254-12 AND TREE REPLACEMENT PLAN**

Mississauga's Tree Protection by-law stipulates replacement plantings, and/or a cash-in-lieu payment may be required as a condition of a permit to damage or remove trees on private property. Suitable areas adjacent to road expansion areas in the study area exist (e.g., mowed grassy area on lawns and in parks) to replace/compensate for the trees to be removed. Based on the impact assessment outlined

above, in order to comply with the City's Tree Preservation By-law, a total of sixty (60) trees are required to replace the fifty-eight (58) trees identified for removal (**Appendix 1**).

Based on Mississauga's Tree Protection By-law (254-12) and site plan and development application documents it is recommended that the minimum tree replacement size be six (6) centimeter DBH for deciduous trees, and 180 cm height for coniferous trees. One (1) replacement tree is required for trees with a DBH 49 cm or less while two (2) are required for trees with a DBH 50cm or greater. Replacement trees should be the same species except for non-native trees. A summary of replacement requirements for individual trees is provided in **Appendix 1**.

Riverstone recommends all replacement trees be native species, and would recommend that based on site conditions, the following species be considered:

- Sugar Maple (*Acer Saccharum*)
- American Basswood (*Tilia americana*)
- Northern Red Oak (*Quercus rubra*)
- Black Walnut (*Juglans nigra*)
- Service Berry (*Amelanchier canadensis*)

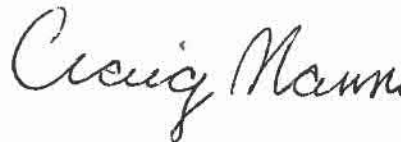
Please contact us if there are any questions regarding the report, or if further information is required.

Best regards,

RiverStone Environmental Solutions Inc.

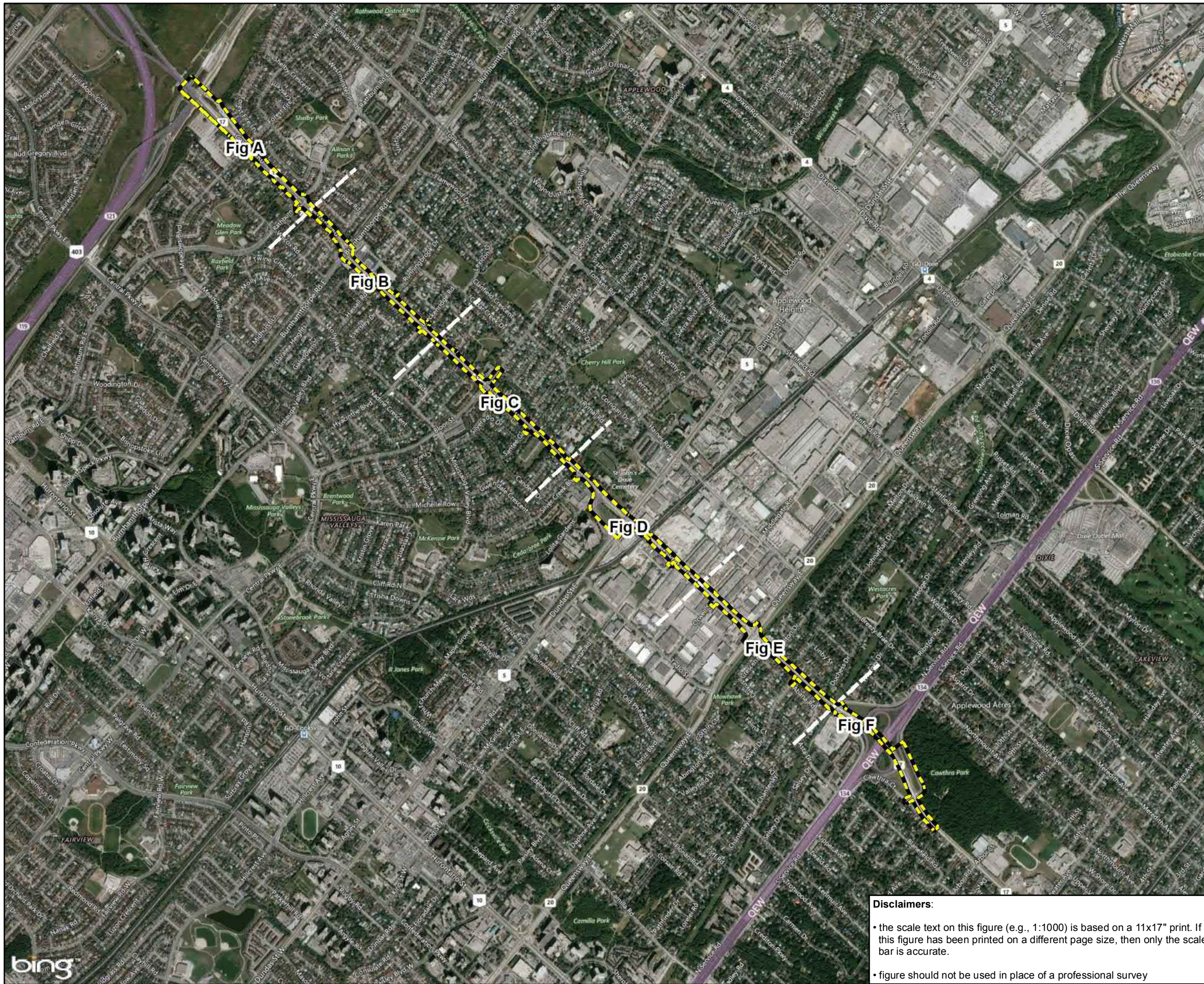


Bev Wicks, Ph.D.  
Senior Ecologist/Principal



Craig Mann H.B.Sc.F., Dipl. IFRM.  
Ecologist/ISA certified Arborist (ON-2369A)

**Figure 1.** Location of the Project Area.



**Legend**

**Planning Boundaries**

Right Of Way (Extent of Study)

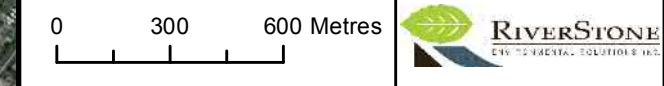
**RS Mapping Tools**

Match Line

Match Lines Indicate Page Break For Tree Inventory and Preservation Plan Figures.

Orthorectified aerial photo - BING Imagery

Scale	RS Project No.	Date Last Updated	By
1:20,000	2016-008	Dec 05, 2018	JG



**Figure 1. .Location of Study Area.**  
Cawthra Road  
( Eastgate Pkwy to South Service Rd )

Prepared for IBI Group

Inset: General Location of Study Area

**Disclaimers:**

- the scale text on this figure (e.g., 1:1000) is based on a 11x17" print. If this figure has been printed on a different page size, then only the scale bar is accurate.
- figure should not be used in place of a professional survey

**Figure 2.** Tree Inventory.





**Legend**

**Planning Boundaries**

--- Right Of Way (Extent of Study)

**Biophysical Features+Functions-RiverStone**

● Tree Inventory (With Corresponding Tag Number)



Orthorectified aerial photo - spring 2011

Scale	RS Project No.	Date Last Updated	By
1:1,500	2016-008	Dec 06, 2018	JG

0 20 40 Metres

**Figure 2A. Tree Inventory.**  
 Cawthra Road, Mississauga  
 (Eastgate Pkwy to South Service Rd )  
 Prepared for IBI Group



**Legend**

**Planning Boundaries**

- Right Of Way (Extent of Study)

**Biophysical Features+Functions-RiverStone**

- Tree Inventory (With Corresponding Tag Number)



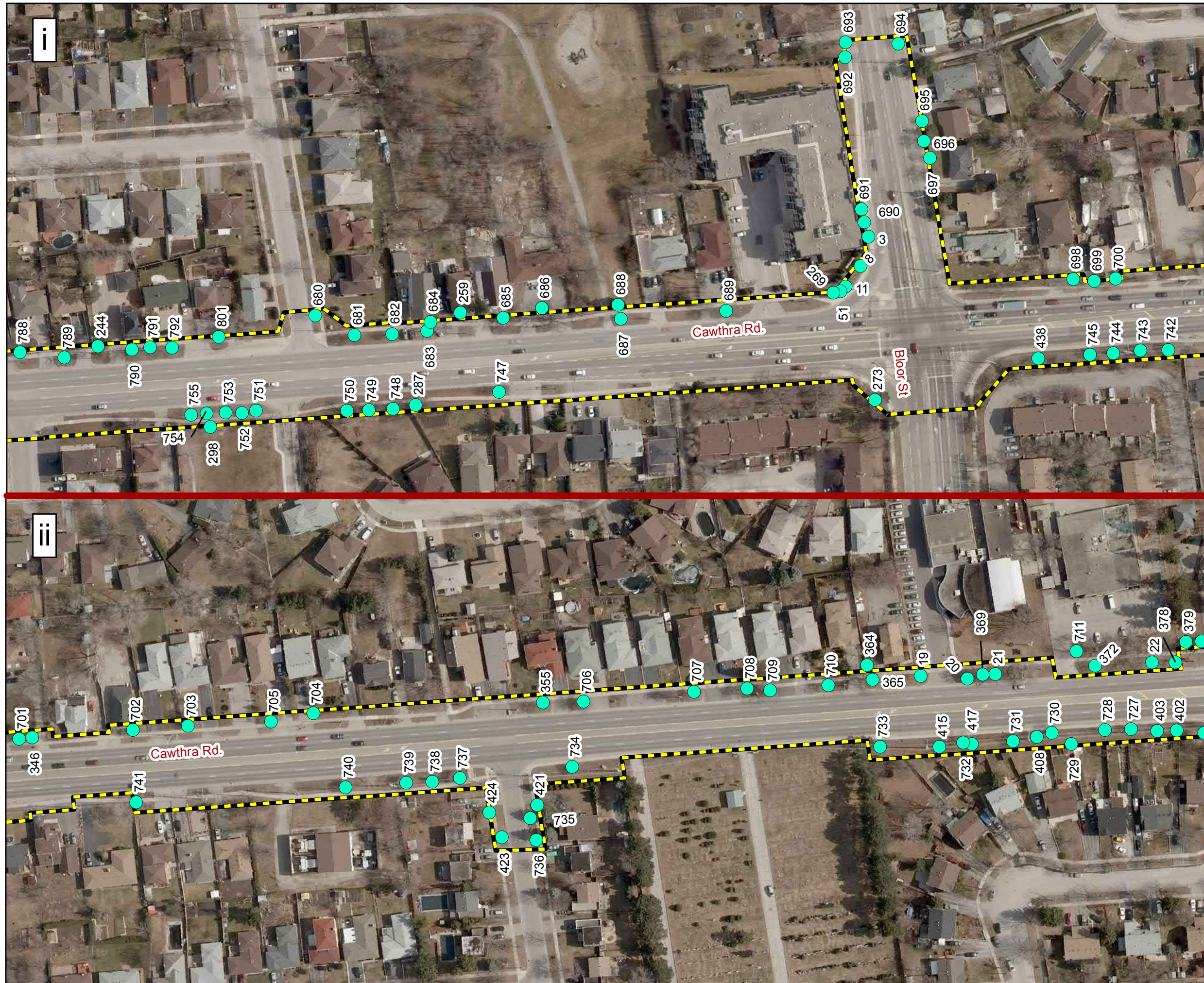
Orthorectified aerial photo - spring 2011

Scale	RS Project No.	Date Last Updated	By
1:1,500	2016-008	Dec 06, 2018	JG

0 20 40 Metres

**Figure 2B. Tree Inventory.**  
 Cawthra Road, Mississauga  
 (Eastgate Pkwy to South Service Rd )

Prepared for IBI Group



**Legend**

**Planning Boundaries**  
 - - - Right Of Way (Extent of Study)

**Biophysical Features+Functions-RiverStone**  
 ● Tree Inventory (With Corresponding Tag Number)

Orthorectified aerial photo - spring 2011

Scale	RS Project No.	Date Last Updated	By
1:1,500	2016-008	Dec 06, 2018	JG

0 20 40 Metres

**Figure 2C. Tree Inventory.**  
 Cawthra Road, Mississauga  
 (Eastgate Pkwy to South Service Rd )

Prepared for IBI Group



### Legend

#### Planning Boundaries

Right Of Way (Extent of Study)

#### Biophysical Features+Functions-RiverStone

Tree Inventory (With Corresponding Tag Number)



Orthorectified aerial photo - spring 2011

Scale	RS Project No.	Date Last Updated	By
1:1,500	2016-008	Dec 06, 2018	JG

0 20 40 Metres

**Figure 2D. Tree Inventory.**  
Cawthra Road, Mississauga  
( Eastgate Pkwy to South Service Rd )

Prepared for IBI Group



**Legend**

**Planning Boundaries**

Right Of Way (Extent of Study)

**Biophysical Features+Functions-RiverStone**

Tree Inventory (With Corresponding Tag Number)



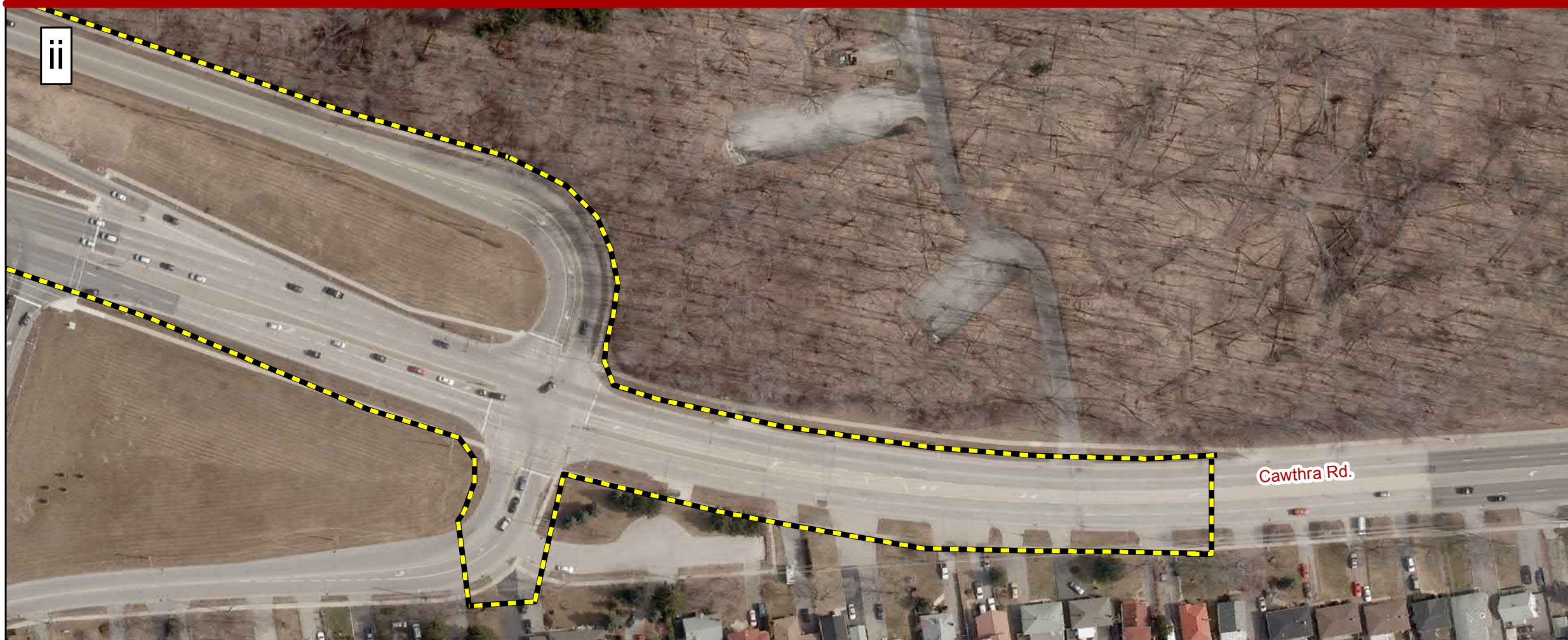
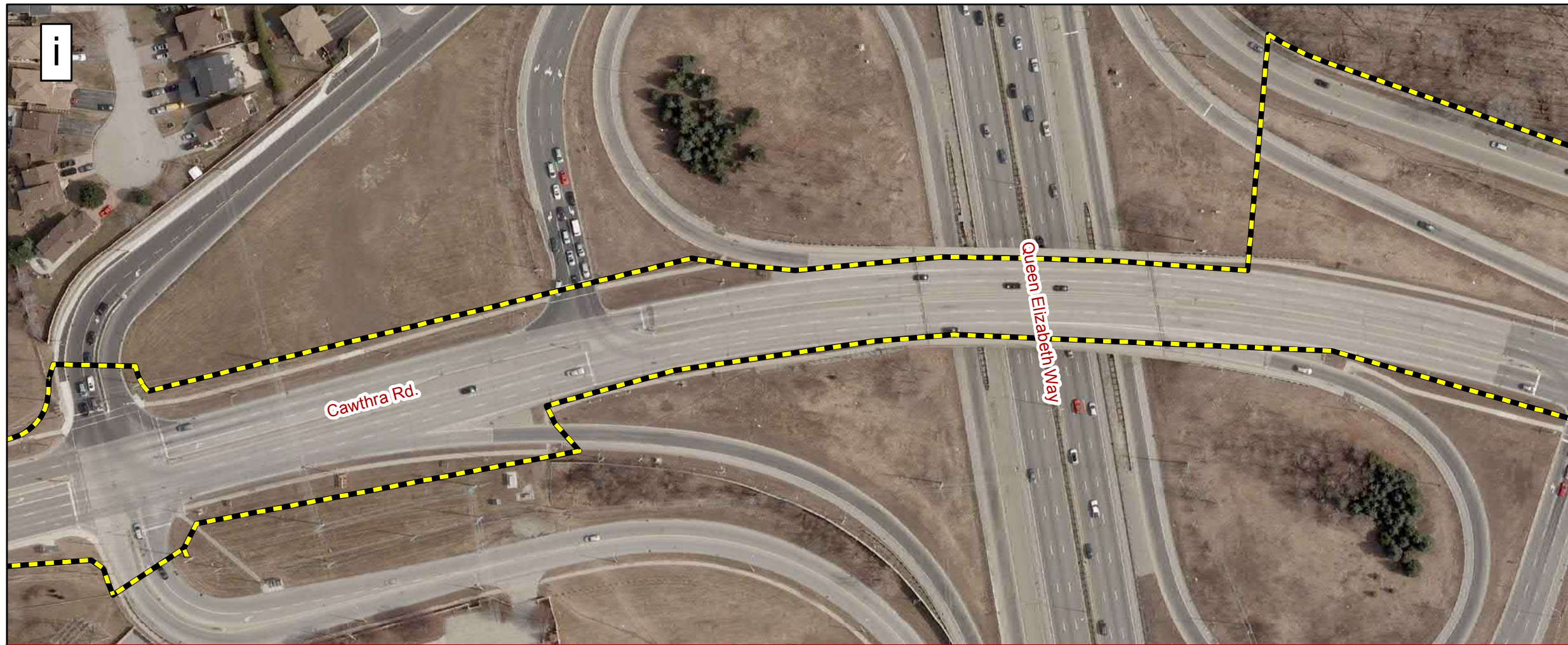
Orthorectified aerial photo - spring 2011

Scale	RS Project No.	Date Last Updated	By
1:1,500	2016-008	Dec 06, 2018	JG

0 20 40 Metres

**Figure 2E. Tree Inventory.**  
Cawthra Road, Mississauga  
( Eastgate Pkwy to South Service Rd )

Prepared for IBI Group



**Legend**

**Planning Boundaries**

— Right Of Way (Extent of Study)

**Biophysical Features+Functions-RiverStone**

● Tree Inventory (With Corresponding Tag Number)



Orthorectified aerial photo - spring 2011

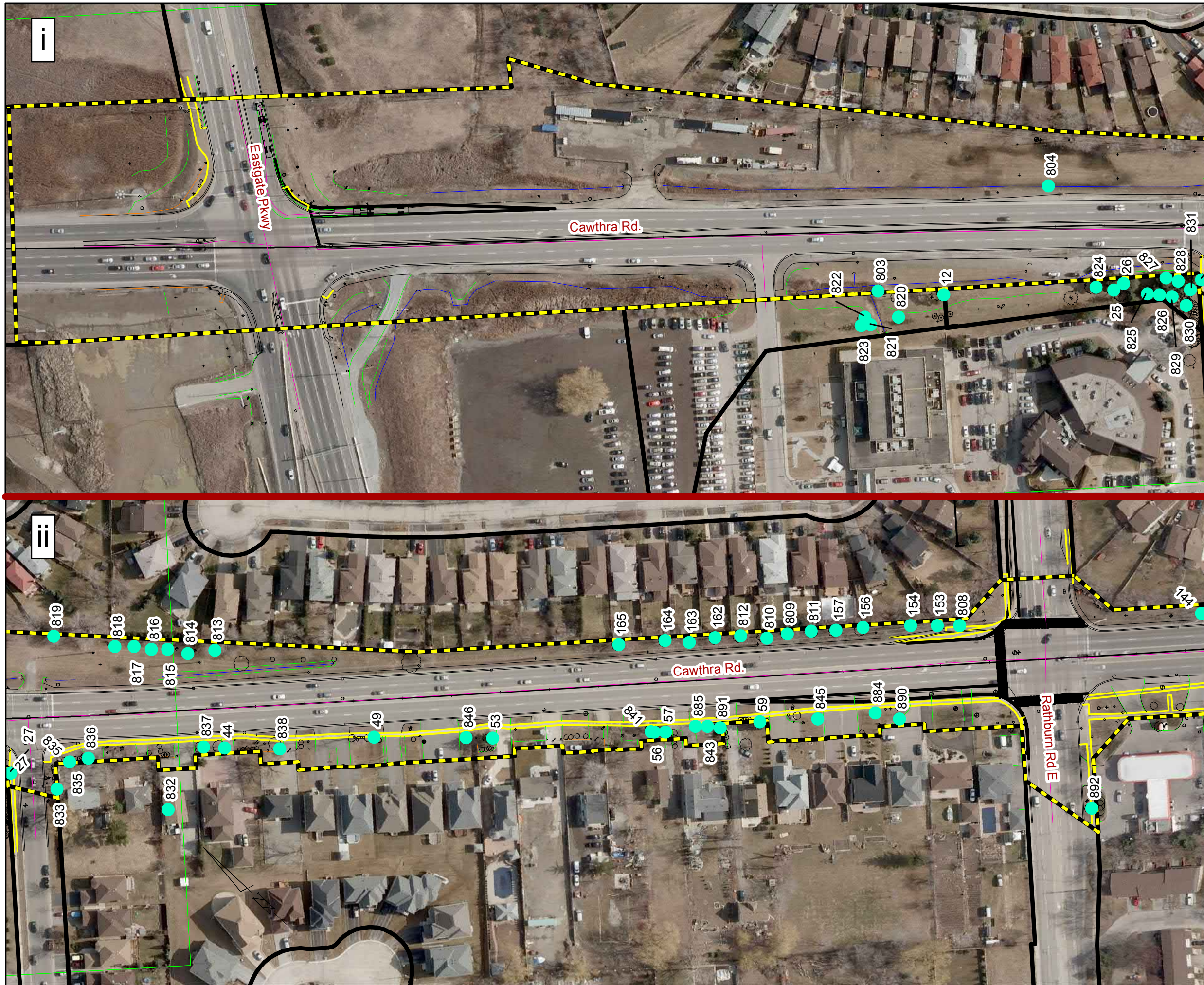
Scale	RS Project No.	Date Last Updated	By
1:1,500	2016-008	Dec 06, 2018	JG

0 20 40 Metres

**Figure 2F. Tree Inventory.**  
 Cawthra Road, Mississauga  
 ( Eastgate Pkwy to South Service Rd )

Prepared for IBI Group

**Figure 3.** Tree Removal and Preservation Plan.



**Legend**

**Planning Boundaries**  
 --- Right Of Way (Extent of Study)

**Biophysical Features+Functions-RiverStone**

- Trees To Be Removed
- Trees To Be Retained

Orthorectified aerial photo - spring 2011

Scale	RS Project No.	Date Last Updated	By
1:1,500	2016-008	Dec 06, 2018	JG

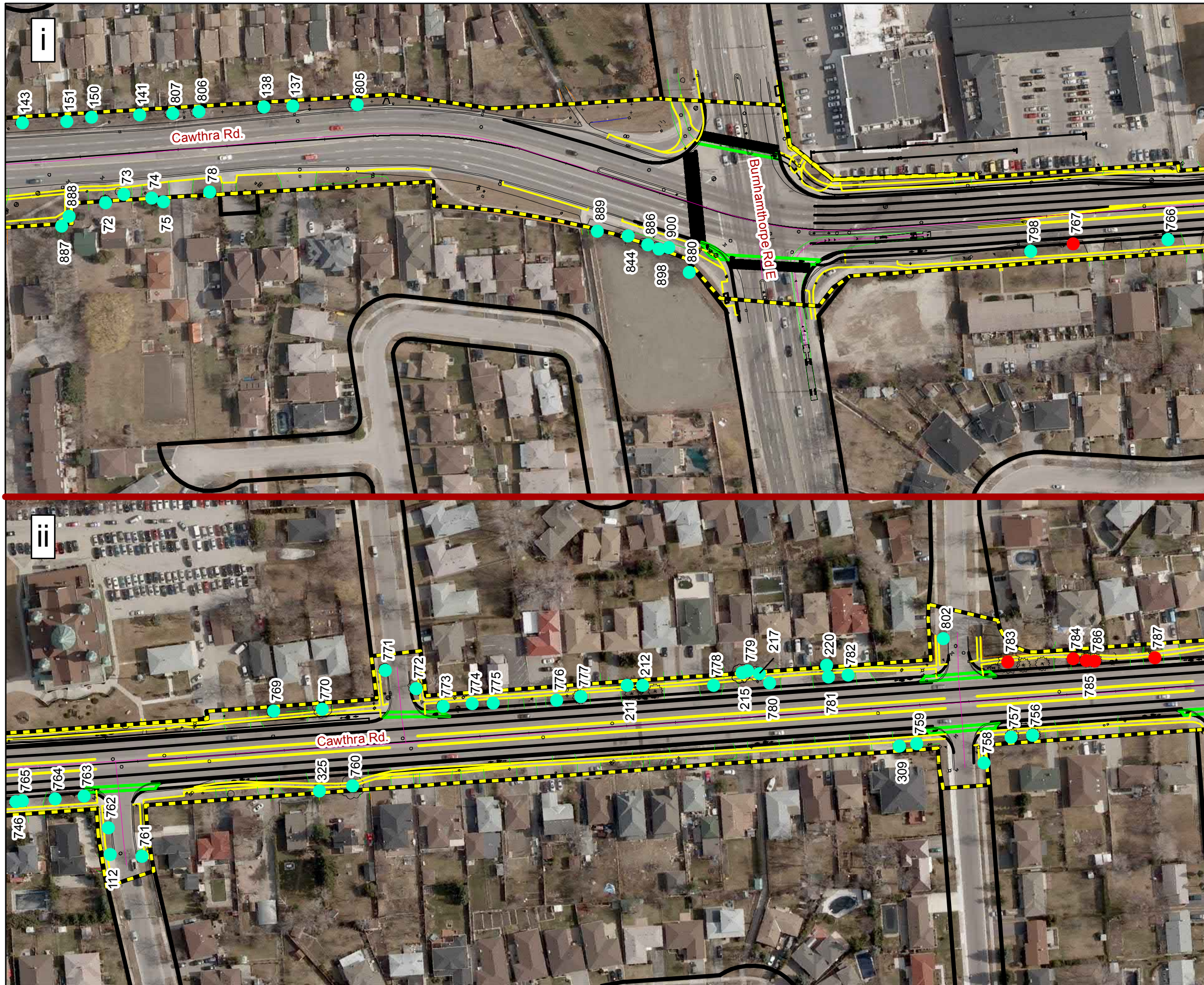
0 20 40 Metres

**Figure 3A. Tree Preservation Plan.**  
 Cawthra Road, Mississauga  
 (Eastgate Pkwy to South Service Rd)

Prepared For IBI Group  
 Design Drawings Provided by IBI Group







**Legend**

**Planning Boundaries**

- Right Of Way (Extent of Study)

**Biophysical Features+Functions-RiverStone**

- Trees To Be Removed
- Trees To Be Retained

Orthorectified aerial photo - spring 2011

Scale	RS Project No.	Date Last Updated	By
1:1,500	2016-008	Dec 06, 2018	JG

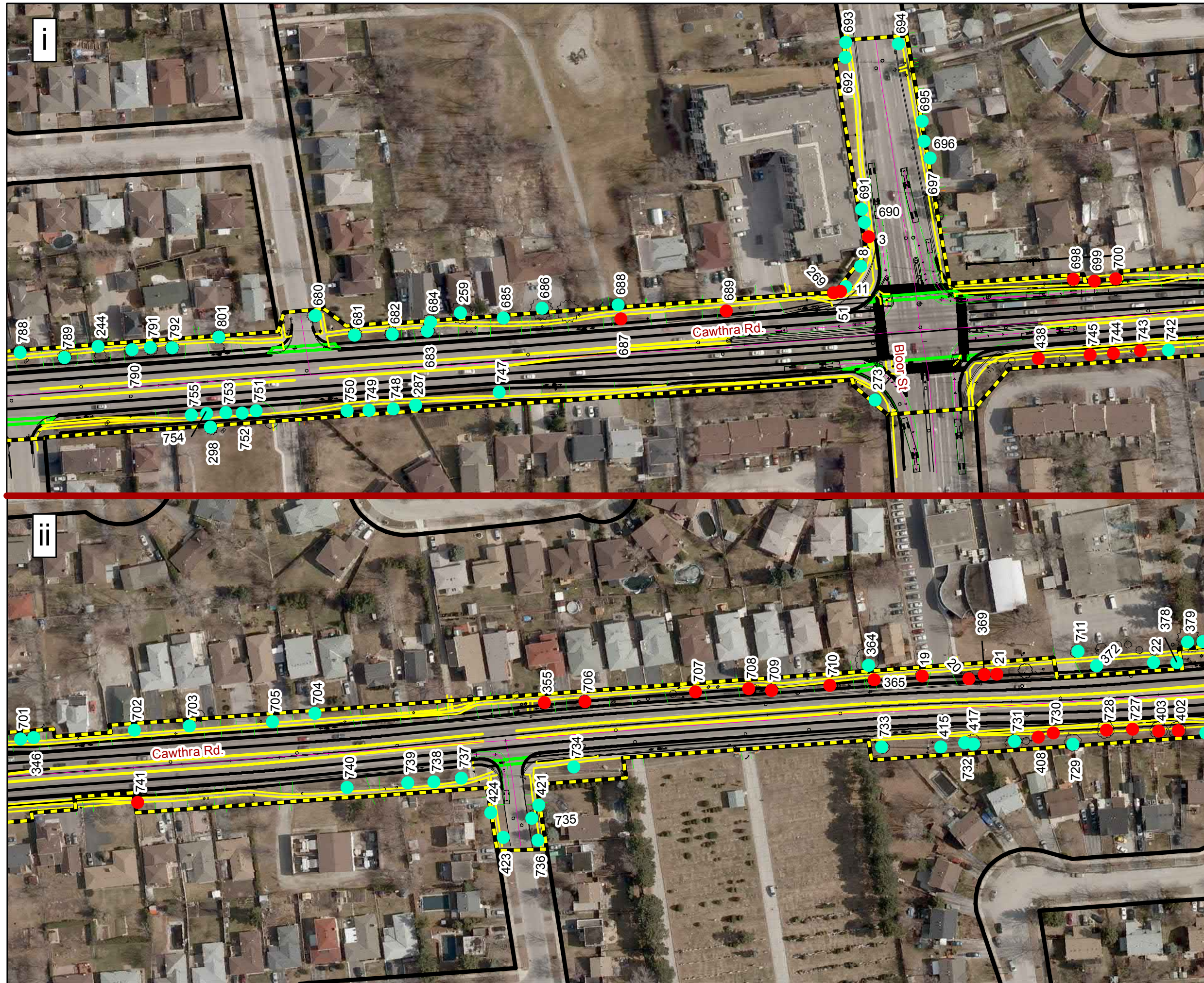
0 20 40 Metres

**RIVERSTONE**  
ENVIRONMENTAL SOLUTIONS INC.

**Figure 3B. Tree Preservation Plan.**  
Cawthra Road, Mississauga  
(Eastgate Pkwy to South Service Rd)

Prepared for IBI Group

Design Drawings Provided by IBI Group



### Legend

- Planning Boundaries**
- Right Of Way (Extent of Study)
- Biophysical Features+Functions-RiverStone**
- Trees To Be Removed
  - Trees To Be Retained



Orthorectified aerial photo - spring 2011

Scale	RS Project No.	Date Last Updated	By
1:1,500	2016-008	Dec 06, 2018	JG

0      20      40 Metres

**Figure 3C. Tree Preservation Plan.**  
 Cawthra Road, Mississauga  
 (Eastgate Pkwy to South Service Rd)

Prepared for IBI Group

Design Drawings Provided by IBI Group



**Legend**

**Planning Boundaries**

Right Of Way (Extent of Study)

**Biophysical Features+Functions-RiverStone**

● Trees To Be Removed

● Trees To Be Retained



Orthorectified aerial photo - spring 2011

Scale	RS Project No.	Date Last Updated	By
1:1,500	2016-008	Dec 06, 2018	JG

0 20 40 Metres

**Figure 3D. Tree Preservation Plan.**  
Cawthra Road, Mississauga  
(Eastgate Pkwy to South Service Rd)

Prepared for IBI Group

Design Drawings Provided by IBI Group



**Legend**

**Planning Boundaries**  
 - - - Right Of Way (Extent of Study)

**Biophysical Features+Functions-RiverStone**

- Trees To Be Removed
- Trees To Be Retained

Orthorectified aerial photo - spring 2011

Scale	RS Project No.	Date Last Updated	By
1:1,500	2016-008	Dec 06, 2018	JG

0 20 40 Metres

**RIVERSTONE**  
 ENVIRONMENTAL SOLUTIONS INC.

**Figure 3E. Tree Preservation Plan.**  
 Cawthra Road, Mississauga  
 (Eastgate Pkwy to South Service Rd)

Prepared for IBI Group

Design Drawings Provided by IBI Group



**Legend**

**Planning Boundaries**

Right Of Way (Extent of Study)

**Biophysical Features+Functions-RiverStone**

Trees To Be Removed

Trees To Be Retained



Orthorectified aerial photo - spring 2011

Scale	RS Project No.	Date Last Updated	By
1:1,500	2016-008	Dec 06, 2018	JG

0 20 40 Metres

**Figure 3F. Tree Preservation Plan.**  
 Cawthra Road, Mississauga  
 (Eastgate Pkwy to South Service Rd)

Prepared for IBI Group

Design Drawings Provided by IBI Group

## **Appendix 1. Tree Inventory**

TABLE 1. Tree Inventory Information Cawthra Road, City of Mississauga

Tag Number	Species	Scientific Name	DBH(cm)	Health	Structure	Dripline	Compensation Cost	Replacement Trees	Remove/Retain	Comments
3	Honey Locust	Gleditsia triacanthos	22	fair	good	5	721.78	1	Remove	crown dieback
8	Ornamental Pear	Pyrus sp	16	good	good	3	721.78	1	Retain	
11	Ornamental Pear	Pyrus sp	17	good	good	4	721.78	1	Retain	
12	Austrian Pine	Pinus nigra	41	good	good	4	721.78	1	Retain	
19	Red Oak	Quercus rubra	34	good	good	5	721.78	1	Remove	
20	Ornamental Pear	Pyrus sp	28	fair	fair	4	721.78	1	Remove	crown dieback, bark inclusion
21	Ornamental Pear	Pyrus sp	38	fair	poor	6	721.78	1	Remove	crown dieback, stem wound major base
22	Norway Maple	Acer platanoides	32	good	good	4	721.78	1	Retain	
23	Norway Maple	Acer platanoides	42	poor	poor	5	721.78	1	Retain	crown dieback, stem damage, bark inclusion
24	Norway Maple	Acer platanoides	48	fair	fair	6	721.78	1	Retain	crown dieback, bark inclusion
25	Austrian Pine	Pinus nigra	48	fair	good	5	721.78	1	Retain	crown dieback
26	Austrian Pine	Pinus nigra	46	good	fair	4	721.78	1	Retain	bark inclusion
26	Austrian Pine	Pinus nigra	16	good	good	1.5	721.78	1	Retain	
27	White Spruce	Picea glauca	48	good	good	5	721.78	1	Retain	
28	Austrian Pine	Pinus nigra	12	good	good	1.5	721.78	1	Retain	
30	Norway Spruce	Acer platanoides	40	good	fair	5	721.78	1	Retain	bark inclusion
31	Colorado Blue Spruce	Picea pungens	40	good	fair	5	721.78	1	Retain	bark inclusion
33	Norway spruce	Acer platanoides	40	good	good	5	721.78	1	Retain	
34	Norway spruce	Acer platanoides	34	good	good	5	721.78	1	Retain	
44	Silver Maple	Acer saccharinum	54	good	good	5	1443.56	2	Retain	
49	Silver Maple	Acer saccharinum	43	fair	good	4	721.78	1	Retain	watersprouts
51	Ornamental Pear	Pyrus sp	13	fair	good	3	721.78	1	Remove	crown dieback
53	Norway Spruce	Picea abies	98	good	good	4	1443.56	2	Retain	
56	Austrian Pine	Pinus nigra	22	fair	good	3	721.78	1	Retain	crown dieback
57	Austrian Pine	Pinus nigra	32	good	fair	3	721.78	1	Retain	lean
59	Colorado Blue Spruce	Picea pungens	40	good	good	4	721.78	1	Retain	
72	Siberian Elm	Ulmus pumila	44	fair	fair	4	721.78	1	Retain	crown dieback, bark inclusion
73	Norway Maple	Acer platanoides	44	good	good	5	721.78	1	Retain	
74	Colorado Blue Spruce	Picea pungens	32	good	good	3	721.78	1	Retain	
75	Colorado Blue Spruce	Picea pungens	34	good	good	3	721.78	1	Retain	
78	Eastern White Cedar	Thuja occidentalis	32	good	good	3	721.78	1	Retain	
112	Norway Maple	Acer platanoides	25	fair	fair	3	721.78	1	Retain	crown dieback, bark inclusion
137	Silver Maple	Acer saccharinum	52	good	poor	7	1443.56	2	Retain	right angle branches over road, rune over road
138	Silver Maple	Acer saccharinum	50	good	fair	4	1443.56	2	Retain	lean
141	Silver Maple	Acer saccharinum	48	poor	fair	4	721.78	1	Retain	watersprouts, stem wound
143	Silver Maple	Acer saccharinum	46	fair	fair	4	721.78	1	Retain	bark inclusion, watersprouts
144	Silver Maple	Acer saccharinum	42	fair	fair	4	721.78	1	Retain	stem wound, watersprouts
150	Silver Maple	Acer saccharinum	43	good	good	5	721.78	1	Retain	
151	Silver Maple	Acer saccharinum	48	fair	good	5	721.78	1	Retain	watersprouts
153	Silver Maple	Acer saccharinum	27	fair	fair	3	721.78	1	Retain	watersprouts, stem wound
154	Silver Maple	Acer saccharinum	33	good	fair	4	721.78	1	Retain	bark inclusion
156	Silver Maple	Acer saccharinum	41	fair	fair	5	721.78	1	Retain	watersprouts, lean
157	Silver Maple	Acer saccharinum	42	fair	fair	4	721.78	1	Retain	watersprouts, stem wound
162	Silver Maple	Acer saccharinum	54	fair	fair	5	1443.56	2	Retain	bark inclusion, watersprouts
163	Silver Maple	Acer saccharinum	49	fair	fair	5	721.78	1	Retain	watersprouts, stem wound
164	Silver Maple	Acer saccharinum	52	fair	fair	3	1443.56	2	Retain	watersprouts, stem wound
165	Silver Maple	Acer saccharinum	69	fair	fair	6	1443.56	2	Retain	watersprouts, stem wound
211	Colorado Blue Spruce	Picea pungens	18	good	fair	1	721.78	1	Retain	pruned, lean, topped
212	Colorado Blue Spruce	Picea pungens	34	good	good	3	721.78	1	Retain	
215	Silver Maple	Acer saccharinum	46	fair	poor	10	721.78	1	Retain	watersprouts, bark inclusion, crown dieback
217	Silver Maple	Acer saccharinum	44	fair	fair	10	721.78	1	Retain	bark inclusion, cavity, crown dieback
220	Colorado Blue Spruce	Picea pungens	30	good	good	3	721.78	1	Retain	
244	Austrian Pine	Pinus nigra	31	good	good	3	721.78	1	Retain	
259	White Poplar	Populus alba	59	fair	fair	6	1443.56	2	Retain	crown dieback, butt rot
269	Colorado Blue Spruce	Picea pungens	39	fair	good	4	721.78	1	Remove	crown dieback, pruned
273	Austrian Pine	Pinus nigra	38	fair	poor	4	721.78	1	Retain	lean, asymmetrical crown, concrete wall, crown dieback, insect stem
287	Ornamental Pear	Pyrus sp	40	fair	fair	6	721.78	1	Retain	bark inclusion, crown dieback
298	Silver Maple	Acer saccharinum	52	good	fair	8	1443.56	2	Retain	bark inclusion
309	Norway Maple	Acer platanoides	16	fair	good	4	721.78	1	Retain	crown dieback
325	White Spruce	Picea glauca	25	fair	good	2	721.78	1	Retain	crown dieback
346	Ornamental Pear	Pyrus sp	20	fair	fair	4	721.78	1	Retain	crown dieback, bark inclusion
355	Norway Maple	Acer platanoides	32	fair	fair	5	721.78	1	Remove	crown dieback, bark inclusion

RIVERSTONE ENVIRONMENTAL SOLUTIONS INC.

Tag Number	Species	Scientific Name	DBH(cm)	Health	Structure	Dripline	Compensation Cost	Replacement Trees	Remove/Retain	Comments
364	Basswood	Tilia americana	32	fair	fair	6	721.78	1	Retain	crown dieback, bark inclusion
365	Red Oak	Quercus rubra	94	fair	good	8	1443.56	2	Remove	crown dieback
369	Ornamental Pear	Pyrus sp	30	fair	fair	4	721.78	1	Remove	crown dieback, bark inclusion
372	Norway Maple	Acer platanoides	20	fair	fair	4	721.78	1	Retain	crown dieback, bark inclusion
378	Norway Maple	Acer platanoides	27	fair	good	4	721.78	1	Retain	crown dieback
379	Norway spruce	Acer platanoides	50	poor	poor	4	1443.56	2	Retain	crown dieback, stem damage top to bottom, no top
381	Norway Maple	Acer platanoides	42	fair	poor	6	721.78	1	Retain	crown dieback, bark inclusion
400	Crab Apple	Malus coronaria	24	good	good	4	721.78	1	Retain	
402	Crab Apple	Malus coronaria	13	fair	good	2	721.78	1	Remove	watersprouts
403	Crab Apple	Malus coronaria	22	fair	good	3	721.78	1	Remove	watersprouts
408	Crab Apple	Malus coronaria	20	fair	fair	3	721.78	1	Remove	stem wound, crown dieback
415	Crab Apple	Malus coronaria	27	fair	fair	4	721.78	1	Retain	watersprouts, bark inclusion
417	Crab Apple	Malus coronaria	14	fair	good	3	721.78	1	Retain	watersprouts
421	Illinois Everbearing Mulberry	Morus alba x Morus rubra	16	good	fair	1	721.78	1	Retain	stem wound
423	Norway Maple	Acer platanoides	32	fair	fair	5	721.78	1	Retain	crown dieback, bark inclusion
424	Ornamental Cherry	Prunus sp	29	fair	poor	2	721.78	1	Retain	crown dieback, major wound
438	Norway Maple	Acer platanoides	20	fair	poor	3	721.78	1	Remove	crown dieback, wires, topped at 2.5, bark inclusion
447	English Oak	Quercus robur	20	good	good	2	721.78	1	Retain	
452	Northern Catalpa	Catalpa speciosa	29	fair	fair	4	721.78	1	Retain	crown dieback, dead branch
465	Littleleaf Linden	Tilia cordata	34	dead	dead	0	721.78	1	Retain	marked for removal
467	Austrian Pine	Pinus nigra	30	good	good	4	721.78	1	Retain	lower pruning
481	Colorado Blue Spruce	Picea pungens	20	poor	good	1.5	721.78	1	Retain	crown dieback, dead top, mostly dead
601	Colorado Blue Spruce	Picea pungens	22	fair	good	2	721.78	1	Retain	crown dieback, topped
602	Austrian Pine	Pinus nigra	38	good	good	4	721.78	1	Retain	pruned lower
603	Littleleaf Linden	Tilia cordata	40	fair	fair	3	721.78	1	Retain	bark inclusion, crown dieback
604	Ivory Silk Lilac	Syringa reticulata	13	good	good	2	721.78	1	Retain	
605	Ornamental Pear	Pyrus sp	13	fair	fair	2	721.78	1	Remove	watersprouts, bark inclusion
606	Norway Maple	Acer platanoides	26	good	good	4	721.78	1	Remove	tar spot
607	Norway Maple	Acer platanoides	20	fair	good	4	721.78	1	Remove	crown dieback
608	Norway Maple	Acer platanoides	47	good	fair	8	721.78	1	Remove	crown dieback
609	Norway Maple	Acer platanoides	46	good	fair	8	721.78	1	Remove	crown dieback
610	Norway Maple	Acer platanoides	33	fair	fair	8	721.78	1	Remove	crown dieback
611	Norway Maple	Acer platanoides	35	good	fair	8	721.78	1	Remove	crown dieback, tar spot
612	Norway Maple	Acer platanoides	36	good	fair	8	721.78	1	Remove	crown dieback
613	Norway Maple	Acer platanoides	35	good	fair	8	721.78	1	Remove	crown dieback
614	Norway Maple	Acer platanoides	19	good	good	4	721.78	1	Remove	
615	Norway Maple	Acer platanoides	32	good	fair	6	721.78	1	Remove	crown dieback
616	Norway Maple	Acer platanoides	34	fair	fair	5	721.78	1	Remove	crown dieback
617	Norway Maple	Acer platanoides	17	good	poor	3	721.78	1	Remove	stem wound, bark inclusion
618	Norway Maple	Acer platanoides	24	fair	fair	4	721.78	1	Remove	stem wounds, tar spot, crown dieback
619	Norway Maple	Acer platanoides	25	good	poor	3	721.78	1	Remove	tar spot some, stem wound, crown dieback
620	Norway Maple	Acer platanoides	26	good	poor	4	721.78	1	Remove	stem wound, crown dieback
621	Norway Maple	Acer platanoides	37	good	fair	4	721.78	1	Remove	crown dieback
622	Norway Maple	Acer platanoides	46	good	fair	6	721.78	1	Remove	crown dieback, tar spot
623	Ornamental Cherry	Prunus sp	30	poor	fair	4	721.78	1	Retain	crown dieback, Butris, insect wound
624	Norway Maple	Acer platanoides	32	good	fair	4	721.78	1	Remove	bark inclusion
625	Norway Maple	Acer platanoides	18.5	good	good	4	721.78	1	Retain	watersprouts
626	Norway Maple	Acer platanoides	40	poor	good	6	721.78	1	Remove	insects leaves, crown dieback
627	Norway Maple	Acer platanoides	34	fair	good	4	721.78	1	Retain	crown dieback
628	Norway Maple	Acer platanoides	32	fair	good	5	721.78	1	Retain	crown dieback
629	Norway Maple	Acer platanoides	32	fair	good	5	721.78	1	Retain	crown dieback
630	Norway Maple	Acer platanoides	48	fair	good	5	721.78	1	Retain	crown dieback
631	Freeman Maple	Acer x fremanii	19	good	good	5	721.78	1	Retain	
632	Norway Maple	Acer platanoides	20	fair	good	3	721.78	1	Retain	crown dieback
633	Norway Maple	Acer platanoides	16	fair	good	3	721.78	1	Retain	crown dieback
634	Norway Maple	Acer platanoides	24	fair	good	4	721.78	1	Retain	crown dieback, watersprouts
635	Norway Maple	Acer platanoides	22	fair	good	3	721.78	1	Retain	crown dieback
636	Norway Maple	Acer platanoides	14	fair	good	2	721.78	1	Retain	crown dieback
637	Norway Maple	Acer platanoides	17	fair	poor	4	721.78	1	Retain	crown dieback, stem wound, driven keader
638	Norway Maple	Acer platanoides	14	poor	poor	1.5	721.78	1	Retain	crown dieback, stem wound
639	Norway Maple	Acer platanoides	16	poor	poor	4	721.78	1	Retain	crown dieback, stem wound at 1.5
640	Crab Apple	Malus coronaria	17	fair	fair	4	721.78	1	Retain	watersprouts, crown dieback, base root wound
641	Crab Apple	Malus coronaria	15	good	good	3	721.78	1	Retain	underwires
642	Crab Apple	Malus coronaria	14	good	fair	3	721.78	1	Retain	mult stem wounds, broken branches



RIVERSTONE ENVIRONMENTAL SOLUTIONS INC.

Tag Number	Species	Scientific Name	DBH(cm)	Health	Structure	Dripline	Compensation Cost	Replacement Trees	Remove/Retain	Comments
643	Crab Apple	Malus coronaria	17	good	good	4	721.78	1	Retain	underwires
644	Crab Apple	Malus coronaria	17	good	good	4	721.78	1	Retain	underwires
645	Norway Maple	Acer platanoides	19	good	fair	2	721.78	1	Retain	crown dieback, bark inclusion
646	Norway Maple	Acer platanoides	16	good	poor	4	721.78	1	Retain	bark inclusion, wound at base
647	Norway Maple	Acer platanoides	18	good	fair	2	721.78	1	Retain	bark inclusion
648	Norway Maple	Acer platanoides	25	good	fair	2	721.78	1	Retain	bark inclusion
649	Norway Maple	Acer platanoides	24	fair	good	3	721.78	1	Retain	bark inclusion
650	Norway Maple	Acer platanoides	16	fair	good	3	721.78	1	Retain	bark inclusion
651	Crab Apple	Malus coronaria	12	good	good	2	721.78	1	Retain	
652	Crab Apple	Malus coronaria	10	good	good	2	721.78	1	Retain	
653	Crab Apple	Malus coronaria	10	good	good	2	721.78	1	Retain	
654	Norway Maple	Acer platanoides	40	good	fair	5	721.78	1	Retain	bark inclusion
655	Norway Maple	Acer platanoides	26	dead	dead		721.78	1	Retain	
656	Ivory Silk Lilac	Syringa reticulata	14	good	good	2	721.78	1	Retain	
657	Ornamental Pear	Pyrus sp	14	fair	good	1.5	721.78	1	Retain	crown dieback
658	Crab Apple	Malus coronaria	12	good	good	3	721.78	1	Retain	
659	Russian Olive	Elaeagnus angustifolia	28	fair	good	6	721.78	1	Retain	crown dieback
660	Russian Olive	Elaeagnus angustifolia	26	fair	fair	6	721.78	1	Retain	crown dieback, lean
661	Russian Olive	Elaeagnus angustifolia	26	fair	fair	6	721.78	1	Retain	crown dieback, lean
662	Russian Olive	Elaeagnus angustifolia	22	fair	fair	6	721.78	1	Retain	lean, crown dieback
663	Russian Olive	Elaeagnus angustifolia	32	good	fair	5	721.78	1	Remove	bark inclusion
664	Russian Olive	Elaeagnus angustifolia	29	good	fair	8	721.78	1	Retain	lean, stem wound
665	Crab Apple	Malus coronaria	16	good	good	2	721.78	1	Retain	
666	Crab Apple	Malus coronaria	18	fair	good	4	721.78	1	Retain	watersprouts
667	Crab Apple	Malus coronaria	14	good	fair	2	721.78	1	Remove	stem wound 2.0
668	Norway Maple	Acer platanoides	28	fair	fair	8	721.78	1	Retain	crown dieback, stem wounds
669	Norway Maple	Acer platanoides	22	good	good	4	721.78	1	Retain	
670	English Oak	Quercus robor	20	good	good	3	721.78	1	Retain	
671	Honey Locust	Gleditsia triacanthos	32	good	good	4	721.78	1	Retain	pruned
672	Crimson King Norway Maple	Acer platanoides	22	good	good	3	721.78	1	Retain	
673	Honey Locust	Gleditsia triacanthos	34	good	good	4	721.78	1	Retain	pruned
674	Silver Maple	Acer saccharinum	29	fair	d	6	721.78	1	Retain	crown dieback, root bound
675	Norway Maple	Acer platanoides	16	good	fair	3	721.78	1	Retain	bark inclusion
676	Austrian Pine	Pinus nigra	24	fair	fair	5	721.78	1	Retain	crown dieback, heavy prune, no leader
677	Austrian Pine	Pinus nigra	18	fair	fair	3	721.78	1	Retain	crown dieback, no leader
678	Colorado Blue Spruce	Picea pungens	28	good	good	3	721.78	1	Retain	
679	Colorado Blue Spruce	Picea pungens	27	good	good	3	721.78	1	Retain	
680	Norway Maple	Acer platanoides	26	good	good	4	721.78	1	Retain	
681	Ornamental Cherry	Prunus sp	36	dead	dead		721.78	1	Retain	
682	Ornamental Cherry	Prunus sp	37	poor	fair	4	721.78	1	Retain	insect amage
683	Norway Maple	Acer platanoides	25	fair	poor	4	721.78	1	Retain	rot on stem, bark inclusion
684	Norway Maple	Acer platanoides	34	good	fair	8	721.78	1	Retain	stem cavity, rot branch stub
685	Crab Apple	Malus coronaria	31	fair	good	6	721.78	1	Retain	crown dieback, underwire
686	Bur Oak	Quercus macrocarpa	54	fair	good	8	1443.56	2	Retain	crown dieback, pruned
687	Norway Maple	Acer platanoides	23	fair	poor	4	721.78	1	Remove	crown dieback, rot seem 2.0
688	Juniper	Juniperus communis	40	good	good	4	721.78	1	Retain	
689	Honey Locust	Gleditsia triacanthos	37	fair	fair	6	721.78	1	Remove	crown dieback, bark inclusion
690	Honey Locust	Gleditsia triacanthos	11	good	good	4	721.78	1	Retain	
691	Honey Locust	Gleditsia triacanthos	14	good	good	4	721.78	1	Retain	
692	Norway Maple	Acer platanoides	41	good	fair	6	721.78	1	Retain	bark inclusion
693	Horse Chestnut	Aesculus hippocastanum	23	poor	fair	6	721.78	1	Retain	crown dieback, cavity stem
694	Crab Apple	Malus coronaria	14	fair	fair	3	721.78	1	Retain	crown dieback, bark inclusion
695	Ivory Silk Lilac	Syringa reticulata	12	good	good	3	721.78	1	Retain	
696	Ornamental Pear	Pyrus sp	26	fair	fair	4	721.78	1	Retain	crown dieback
697	Ivory Silk Lilac	Syringa reticulata	25	fair	poor	3	721.78	1	Retain	crown dieback
698	Norway Maple	Acer platanoides	42	fair	fair	6	721.78	1	Remove	crown dieback, bark inclusion, cavity
699	Norway Maple	Acer platanoides	36	good	fair	6	721.78	1	Remove	branch stub rot, bark inclusion
700	Norway Maple	Acer platanoides	40	good	fair	6	721.78	1	Remove	bark inclusion
701	Ornamental Pear	Pyrus sp	22	poor	fair	4	721.78	1	Retain	stem rot
702	Norway Maple	Acer platanoides	26	poor	poor	1	721.78	1	Retain	stem wounds, no leader, crown dieback
703	Norway Maple	Acer platanoides	27	fair	fair	4	721.78	1	Retain	crown dieback, no leader, rot at 2.5
704	Norway Maple	Acer platanoides	26	poor	poor	3	721.78	1	Retain	crown dieback, rot at 20, bark inclusion
705	Colorado Blue Spruce	Picea pungens	22	fair	good	2	721.78	1	Retain	crown dieback, insect leaves
706	Honey Locust	Gleditsia triacanthos	41	fair	fair	5	721.78	1	Remove	bark inclusion, crown dieback, watersprouts

## RIVERSTONE ENVIRONMENTAL SOLUTIONS INC.

Tag Number	Species	Scientific Name	DBH(cm)	Health	Structure	Dripline	Compensation Cost	Replacement Trees	Remove/Retain	Comments
707	Honey Locust	Gleditsia triacanthos	26	good	good	5	721.78	1	Remove	bark inclusion, crown dieback
708	Norway Maple	Acer platanoides	27	good	good	4	721.78	1	Remove	crown dieback
709	Honey Locust	Gleditsia triacanthos	48	good	fair	8	721.78	1	Remove	bark inclusion, crown dieback
710	Norway Maple	Acer platanoides	30	good	fair	4	721.78	1	Remove	stem wound, bark inclusion
711	Green Ash	Fraxinus pennsylvanica	30	poor	poor	1	721.78	1	Retain	crown dieback, almost dead, watersprouts
712	Black Walnut	Juglans nigra	53	fair	poor	10	1443.56	2	Retain	crown dieback
713	Norway Maple	Acer platanoides	45	fair	fair	6	721.78	1	Retain	crown dieback, bark inclusion
714	Norway Maple	Acer platanoides	41	poor	fair	6	721.78	1	Retain	crown dieback, bark inclusion, almost dead
715	Norway Maple	Acer platanoides	48	good	fair	5	721.78	1	Retain	bark inclusion
716	Colorado Blue Spruce	Picea pungens	38	good	poor	3	721.78	1	Retain	bark inclusion, no leader
717	Black Walnut	Juglans nigra	18	good	good	5	721.78	1	Retain	
718	Norway Maple	Acer platanoides	35	good	fair	4	721.78	1	Retain	bark inclusion
719	Norway Maple	Acer platanoides	27	fair	fair	3	721.78	1	Retain	crown dieback, bark inclusion
720	Norway Maple	Acer platanoides	32	good	good	4	721.78	1	Retain	
721	Norway Maple	Acer platanoides	27	fair	fair	4	721.78	1	Retain	crown dieback, bark inclusion
722	Norway Maple	Acer platanoides	14	good	fair	2	721.78	1	Retain	stem wound, bark inclusion
723	Austrian Pine	Pinus nigra	74	good	good	1.5	1443.56	2	Retain	
724	Green Ash	Fraxinus pennsylvanica	24	poor	poor	3	721.78	1	Retain	crown dieback, stem wounds mostly dead
725	Green Ash	Fraxinus pennsylvanica	34	fair	fair	5	721.78	1	Retain	crown dieback, watersprouts, bark inclusion
726	Green Ash	Fraxinus pennsylvanica	50	fair	fair	6	1443.56	2	Retain	crown dieback, bark inclusion
727	Crab Apple	Malus coronaria	26	good	fair	4	721.78	1	Remove	wound at base, bark inclusion
728	Crab Apple	Malus coronaria	17	fair	fair	3	721.78	1	Remove	watersprouts, lean
729	Manitoba Maple	Acer negundo	20	fair	poor	4	721.78	1	Retain	watersprouts, bark inclusion
730	Crab Apple	Malus coronaria	26	fair	fair	4	721.78	1	Remove	crown dieback, stem wound, bark inclusion
731	Crab Apple	Malus coronaria	12	fair	fair	3	721.78	1	Retain	crown dieback, bark inclusion, ws
732	Crab Apple	Malus coronaria	32	good	fair	3	721.78	1	Retain	bark inclusion, stem wounds
733	Crab Apple	Malus coronaria	30	fair	fair	2	721.78	1	Retain	crown dieback, bark inclusion, stem cavity
734	Norway Maple	Acer platanoides	24	fair	fair	3	721.78	1	Retain	leader gone, crown dieback, underwires
735	Norway Maple	Acer platanoides	21	fair	good	2	721.78	1	Retain	crown dieback
736	Norway Maple	Acer platanoides	25	dead	dead		721.78	1	Retain	
737	Norway Maple	Acer platanoides	22	fair	fair	3	721.78	1	Retain	crown dieback, bark inclusion, wound at 2, under wires
738	Norway Maple	Acer platanoides	21	fair	fair	2	721.78	1	Retain	crown dieback, no leader, wound at 2, under wire
739	Norway Maple	Acer platanoides	24	fair	fair	4	721.78	1	Retain	wound at 2, underwires, crown dieback
740	Norway Maple	Acer platanoides	30	fair	fair	2	721.78	1	Retain	crown dieback, stem wound at 2, under wire
741	Norway Maple	Acer platanoides	26	fair	poor	3	721.78	1	Remove	crown dieback, topped, stem wound at 2, bark inclusion
742	Norway Maple	Acer platanoides	23	fair	fair	4	721.78	1	Retain	crown dieback, topped, bark inclusion
743	Norway Maple	Acer platanoides	20	fair	poor	3	721.78	1	Remove	crown dieback, topped, under wire, topped at 2.5
744	Norway Maple	Acer platanoides	18	fair	fair	3	721.78	1	Remove	crown dieback, topped, under wires, wound at 2.5
745	Norway Maple	Acer platanoides	26	fair	poor	3	721.78	1	Remove	crown dieback, topped at 2.5, bark inclusion
746	Norway Maple	Acer platanoides	22	fair	fair	3	721.78	1	Retain	crown dieback, under wire, topped at 2.5
747	Ornamental Cherry	Prunus sp	26	poor	poor	3	721.78	1	Retain	insect stem, wound stem, crown dieback, mostly dead
748	Ornamental Pear	Pyrus sp	32	fair	fair	4	721.78	1	Retain	bark inclusion, lean, root wound, crown dieback
749	Ornamental Pear	Pyrus sp	29	fair	poor	3	721.78	1	Retain	stem wound at base, crown dieback, bark inclusion
750	Ornamental Pear	Pyrus sp	32	fair	fair	3	721.78	1	Retain	crown dieback, wound at 2.0, bark inclusion
751	Norway Maple	Acer platanoides	11	poor	poor	0.5	721.78	1	Retain	crown dieback, dead top, watersprouts
752	Norway Maple	Acer platanoides	24	fair	fair	3	721.78	1	Retain	watersprouts, crown dieback, stem cavity
753	Norway Maple	Acer platanoides	17	fair	fair	2	721.78	1	Retain	crown dieback, bark inclusion, cavity
754	Norway Maple	Acer platanoides	12	fair	poor	1	721.78	1	Retain	seam in stem, crown dieback
755	Norway Maple	Acer platanoides	16	fair	fair	2	721.78	1	Retain	crown dieback, seam on stem
756	Ornamental Pear	Pyrus sp	13	fair	poor	4	721.78	1	Retain	bark inclusion, lean, cavity, crown dieback,
757	Ornamental Pear	Pyrus sp	36	fair	fair	5	721.78	1	Retain	bark inclusion, crown dieback
758	Norway Maple	Acer platanoides	32	good	good	5	721.78	1	Retain	
759	Norway Maple	Acer platanoides	29	good	good	4	721.78	1	Retain	
760	Silver Maple	Acer saccharinum	70	fair	fair	6	1443.56	2	Retain	watersprouts, bark inclusion
761	Norway Maple	Acer platanoides	27	fair	fair	5	721.78	1	Retain	crown dieback, bark inclusion
762	Norway Maple	Acer platanoides	29	fair	fair	3	721.78	1	Retain	bark inclusion, wounds on stem, crown dieback
763	Norway Maple	Acer platanoides	23	fair	fair	3	721.78	1	Retain	crown dieback, seam stem, bi
764	Norway Maple	Acer platanoides	24	fair	fair	3	721.78	1	Retain	crown dieback, bark inclusion
765	Norway Maple	Acer platanoides	25	fair	poor	3	721.78	1	Retain	crown dieback, wound on stem
766	Norway Maple	Acer platanoides	23	fair	fair	3	721.78	1	Retain	crown dieback, bark inclusion
767	Silver Maple	Acer saccharinum	50	poor	poor	7	1443.56	2	Remove	lean towards road, crown dieback, rot at stem, prune over road
769	Crab Apple	Malus coronaria	30	good	fair	5	721.78	1	Retain	bark inclusion
770	Basswood	Tilia americana	57	fair	fair	7	1443.56	2	Retain	crown dieback, bark inclusion
771	Honey Locust	Gleditsia triacanthos	33	fair	good	6	721.78	1	Retain	crown dieback

## RIVERSTONE ENVIRONMENTAL SOLUTIONS INC.

Tag Number	Species	Scientific Name	DBH(cm)	Health	Structure	Dripline	Compensation Cost	Replacement Trees	Remove/Retain	Comments
772	Honey Locust	Gleditsia triacanthos	32	good	fair	6	721.78	1	Retain	bark inclusion
773	Honey Locust	Gleditsia triacanthos	36	good	fair	6	721.78	1	Retain	bark inclusion
774	Honey Locust	Gleditsia triacanthos	32	good	fair	6	721.78	1	Retain	bark inclusion
775	Honey Locust	Gleditsia triacanthos	36	good	fair	6	721.78	1	Retain	bark inclusion
776	Crab Apple	Malus coronaria	24	good	good	4	721.78	1	Retain	
777	Honey Locust	Gleditsia triacanthos	26	good	fair	6	721.78	1	Retain	bark inclusion, multi stem, cavity
778	Honey Locust	Gleditsia triacanthos	32	fair	fair	6	721.78	1	Retain	bark inclusion, crown dieback
779	Silver Maple	Acer saccharinum	28	fair	poor	3	721.78	1	Retain	crown dieback, cavity, bark inclusion, larged pruned branches
780	Norway Maple	Acer platanoides	13	fair	poor	2	721.78	1	Retain	stem wound, bark inclusion, crown dieback
781	Crab Apple	Malus coronaria	22	fair	good	3	721.78	1	Retain	crown dieback
782	Crab Apple	Malus coronaria	21	fair	good	2	721.78	1	Retain	watersprouts
783	Silver Maple	Acer saccharinum	49	good	good	6	721.78	1	Remove	
784	Northern Catalpa	Catalpa speciosa	32	good	fair	3	721.78	1	Remove	stem wound
785	Northern Catalpa	Catalpa speciosa	23	good	good	3	721.78	1	Remove	
786	Northern Catalpa	Catalpa speciosa	28	fair	good	3	721.78	1	Remove	watersprouts
787	Crab Apple	Malus coronaria	20	good	good	3	721.78	1	Remove	
788	Norway Maple	Acer platanoides	28	good	good	4	721.78	1	Retain	
789	Honey Locust	Gleditsia triacanthos	35	good	good	5	721.78	1	Retain	
790	Norway Maple	Acer platanoides	41	good	good	4	721.78	1	Retain	
791	Norway Maple	Acer platanoides	47	good	good	4	721.78	1	Retain	
792	Norway Maple	Acer platanoides	26	good	fair	4	721.78	1	Retain	stemwound
798	Ornamental Cherry	Prunus sp	29	poor	poor	2	721.78	1	Retain	crown dieback, insect stem, mostly dead
801	Norway Maple	Acer platanoides	21	good	good	3	721.78	1	Retain	
802	Crab Apple	Malus coronaria	27	fair	good	4	721.78	1	Retain	watersprouts
803	Willow sp	Salix sp	14	good	good	5	721.78	1	Retain	
804	White Pine	Pinus strobus	15	good	good	4	721.78	1	Retain	
805	White Oak	Quercus alba	57	good	good	6	1443.56	2	Retain	
806	Silver Maple	Acer saccharinum	52	good	poor	6	1443.56	2	Retain	prune over road
807	Silver Maple	Acer saccharinum	54	fair	poor	7	1443.56	2	Retain	watersprouts, prune over road
808	Silver Maple	Acer saccharinum	32	fair	good	3	721.78	1	Retain	watersprouts
809	Silver Maple	Acer saccharinum	60	fair	good	5	1443.56	2	Retain	watersprouts
810	Silver Maple	Acer saccharinum	61	fair	good	4	1443.56	2	Retain	watersprouts
811	Silver Maple	Acer saccharinum	59	poor	good	3	1443.56	2	Retain	crown dieback, watersprouts
812	Silver Maple	Acer saccharinum	51	good	fair	4	1443.56	2	Retain	bark inclusion
813	Norway Maple	Acer platanoides	48	good	good	5	721.78	1	Retain	
814	Norway Maple	Acer platanoides	19	good	good	3	721.78	1	Retain	
815	Norway Maple	Acer platanoides	14	good	good	3	721.78	1	Retain	
816	Norway Maple	Acer platanoides	23	good	good	3	721.78	1	Retain	
817	Norway Maple	Acer platanoides	18	good	good	3	721.78	1	Retain	
818	Norway Maple	Acer platanoides	18	fair	good	3	721.78	1	Retain	watersprouts
819	Norway Maple	Acer platanoides	35	good	fair	4	721.78	1	Retain	stem wound
820	White Pine	Pinus strobus	18	good	good	4	721.78	1	Retain	
821	White Pine	Pinus strobus	16	good	good	4	721.78	1	Retain	
822	White Pine	Pinus strobus	20	good	good	4	721.78	1	Retain	
823	White Pine	Pinus strobus	17	good	good	4	721.78	1	Retain	
824	Austrian Pine	Pinus nigra	39	fair	good	5	721.78	1	Retain	crown dieback
825	Balsam Fir	Abies balsamea	32	good	good	4	721.78	1	Retain	
826	Balsam Fir	Abies balsamea	23	good	good	4	721.78	1	Retain	
827	Austrian Pine	Pinus nigra	38	good	fair	4	721.78	1	Retain	bark inclusion
828	Balsam Fir	Abies balsamea	15	good	good	4	721.78	1	Retain	
829	White Spruce	Picea glauca	38	good	good	4	721.78	1	Retain	
830	White Spruce	Picea glauca	27	good	good	4	721.78	1	Retain	
831	White Spruce	Picea glauca	23	good	good	3	721.78	1	Retain	
832	Siberian Elm	Ulmus pumila	18	poor	fair	4	721.78	1	Retain	crown dieback, watersprouts
833	Siberian Elm	Ulmus pumila	16	poor	good	3	721.78	1	Retain	crown dieback
835	Siberian Elm	Ulmus pumila	16	poor	good	4	721.78	1	Retain	crown dieback, watersprouts
836	Siberian Elm	Ulmus pumila	16	fair	good	5	721.78	1	Retain	
837	Silver Maple	Acer saccharinum	52	good	good	6	1443.56	2	Retain	
838	Silver Maple	Acer saccharinum	52	fair	fair	6	1443.56	2	Retain	crown dieback, bark inclusion
841	Austrian Pine	Pinus nigra	34	fair	fair	3	721.78	1	Retain	crown dieback, lean
843	Illinois Everbearing Mulberry	Morus alba x Morus rubra	16	fair	good	3	721.78	1	Retain	crown dieback
844	Honey Locust	Gleditsia triacanthos	37	good	good	4	721.78	1	Retain	
845	Norway Maple	Acer platanoides	17	good	good	3	721.78	1	Retain	
846	Norway Maple	Acer platanoides	15	good	good	3	721.78	1	Retain	

RIVERSTONE ENVIRONMENTAL SOLUTIONS INC.

Tag Number	Species	Scientific Name	DBH(cm)	Health	Structure	Dripline	Compensation Cost	Replacement Trees	Remove/Retain	Comments
880	Honey Locust	Gleditsia triacanthos	49	good	good	6	721.78	1	Retain	
884	Norway Maple	Acer platanoides	15	good	good	3	721.78	1	Retain	
885	Illinois Everbearing Mulberry	Morus alba x Morus rubra	14	fair	good	3	721.78	1	Retain	crown dieback
886	Honey Locust	Gleditsia triacanthos	34	good	good	4	721.78	1	Retain	
887	Manitoba Maple	Acer negundo	32	poor	good	5	721.78	1	Retain	watersprouts, crown dieback
888	Manitoba Maple	Acer negundo	34	poor	good	5	721.78	1	Retain	crown dieback, watersprouts
889	Norway Spruce	Picea abies	15	fair	good	3	721.78	1	Retain	crown dieback
890	Norway Maple	Acer platanoides	14	good	good	3	721.78	1	Retain	
891	Illinois Everbearing Mulberry	Morus alba x Morus rubra	14	poor	good	3	721.78	1	Retain	crown dieback, watersprouts
892	Norway Maple	Acer platanoides	22	good	fair	3	721.78	1	Retain	bark inclusion
898	Honey Locust	Gleditsia triacanthos	28	good	good	4	721.78	1	Retain	
900	Honey Locust	Gleditsia triacanthos	35	good	good	4	721.78	1	Retain	