

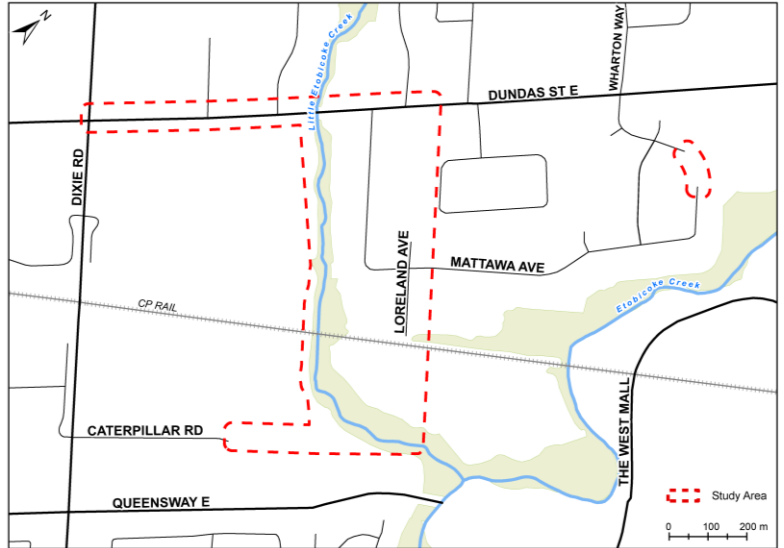
Environmental Assessment Study

NOTICE OF PUBLIC INFORMATION CENTRE (PIC) SANITARY SEWER AND WATERMAIN IMPROVEMENTS, SOUTHEAST MISSISSAUGA

The Study

The Region of Peel has initiated a Schedule 'B' Municipal Class Environmental Assessment (EA) for sanitary sewer and watermain improvements in the Dundas Street East and Mattawa Avenue area in the City of Mississauga.

These improvements are needed to address long-term servicing needs, as identified in Peel Region's Water and Wastewater Master Plan. The project will assess needed improvements at several locations in the sanitary sewer and watermain systems located on and near Dundas Street East and Mattawa Avenue, as shown in the study area map. Proposed work may include rehabilitation, replacement, or new infrastructure.



Public Consultation – We want to hear from you

As public consultation is a key element of the EA process, a Public Information Centre (PIC) will be held to share study details with the public. The PIC will be a drop-in format, where attendees can browse display boards that provide information on the EA process, the study background and existing conditions, and the alternative and recommended solutions. The PIC is scheduled for:

Date: Wednesday, December 12, 2018
Time: 5:30 – 7:30 p.m.
Location: Burnhamthorpe Community Centre
1500 Gullenden Drive, Mississauga
Fleetwood Village Room

Anyone with an interest in the study is invited to attend the PIC. If you cannot attend and would like to provide comments, please forward them by January 8, 2019 to the Project Manager or the consultant Project Manager at the addresses below. Following the PIC, the preliminary preferred solution will be reviewed and confirmed.

For comments, questions or more information on the project, or if you wish to be added to the project mailing list, please contact either of the staff listed below:

Derek Gorzynski, P. Eng.
Project Manager, Capital Works
Region of Peel
905-791-7800, ext. 5013
Derek.Gorzynski@peelregion.ca

Mark Swan, P. Eng.
Senior Project Manager
Parsons Inc.
289-294-6401
Mark.Swan@parsons.com

The Region of Peel is committed to ensure that all Regional services, programs and facilities are inclusive and accessible for persons with disabilities. Please contact the Region's Project Manager if you need any disability accommodations to provide comments or feedback for this study.

This notice was first issued on November 29, 2018.