

# Airport Road Improvements



APPENDICES

ESR

1

Municipal Class Environmental  
Assessment  
Airport Road  
from 1.0km north of Mayfield Road to  
0.6km north of King Street

October 2015

 Region of Peel  
*Working for you*

# A

---

## NOTIFICATIONS AND CONTACTS

# NOTICE OF STUDY COMMENCEMENT

## MUNICIPAL CLASS ENVIRONMENTAL ASSESSMENT STUDY FOR AIRPORT ROAD FROM 1 KILOMETRE NORTH OF MAYFIELD ROAD TO 0.6 KILOMETRE NORTH OF KING STREET, CALEDON, ONTARIO

### The Study

The Regional Municipality of Peel has initiated a Schedule 'C' Class Environmental Assessment for improvements to Airport Road from 1 kilometre north of Mayfield Road to 0.6 kilometres north of King Street in the Town of Caledon. The approximate limits of the project study area are illustrated on the map.

The study will examine the need for improvements to Airport Road to address short term and long term issues related to capacity, operational, geometric and storm drainage deficiencies.

### The Process

The study is being conducted in accordance with the approved requirements for a Schedule 'C' project as described in the Municipal Engineers Association's Municipal Class Environmental Assessment (EA) document (October 2000, as amended in 2007). The Class EA process will include public and agency consultation, an evaluation of road improvement alternatives, an assessment of the potential environmental effects of the proposed improvements and identification of reasonable measures to mitigate any adverse impacts.

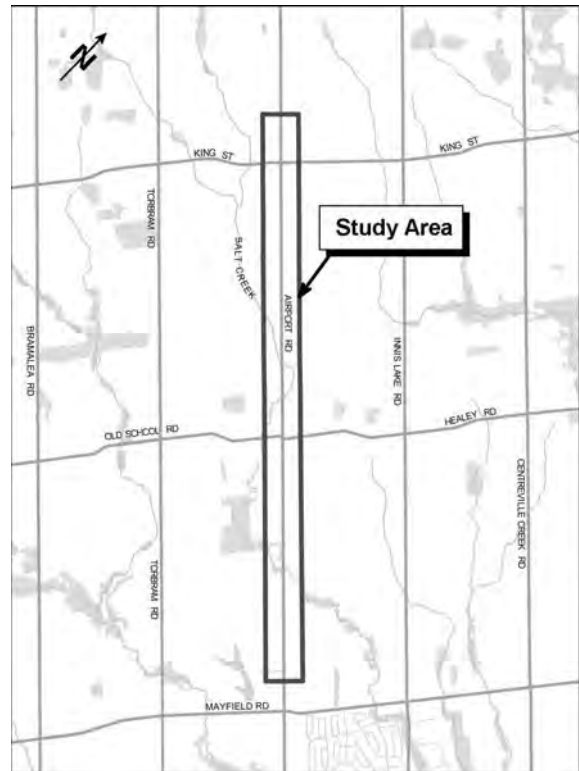
### Public Consultation

Two Public Information Centres (PICs) will be held during the course of the study. The first PIC will provide stakeholders with an opportunity to meet the project team, review the study scope and discuss issues related to the project, including alternative solutions, environmental considerations and evaluation criteria. Details regarding the PICs will be advertised as the study progresses.

### Comments and Information

Please visit our website [peelregion.ca/pw/roads/environ-assess](http://peelregion.ca/pw/roads/environ-assess) for updates on the project. To provide comment or request additional information about this project, please contact:

**Ms. Solmaz Zia, P.Eng.**  
**Project Manager**  
**The Regional Municipality of Peel**  
10 Peel Centre Dr., Suite B  
Brampton, ON L6T 4B9  
Tel: 905-791-7800 ext. 7845  
Fax: 905-791-1442  
E-mail: [solmaz.zia@peelregion.ca](mailto:solmaz.zia@peelregion.ca)



Information will be collected in accordance with the *Municipal Freedom of Information and Protection of Privacy Act*. With the exception of personal information, all comments will become part of the public record.

## Environmental Assessment Study

### NOTICE OF PUBLIC INFORMATION CENTRE No.1

#### AIRPORT ROAD FROM 1KM NORTH OF MAYFIELD ROAD TO 0.6KM NORTH OF KING STREET

##### The Study

The Region of Peel is conducting a Schedule "C" Municipal Class Environmental Assessment (EA) in accordance with the Municipal Engineers Association's Municipal Class EA process for improvements to Airport Road from 1km north of Mayfield Road to 0.6km north of King Street. The approximate limits of the project area are illustrated on the map.

The study will examine the need and feasibility for improvements to Airport Road to address the short and long term issues related to planned future growth, road design and function up to 2031.

##### The Process

The Class EA process includes:

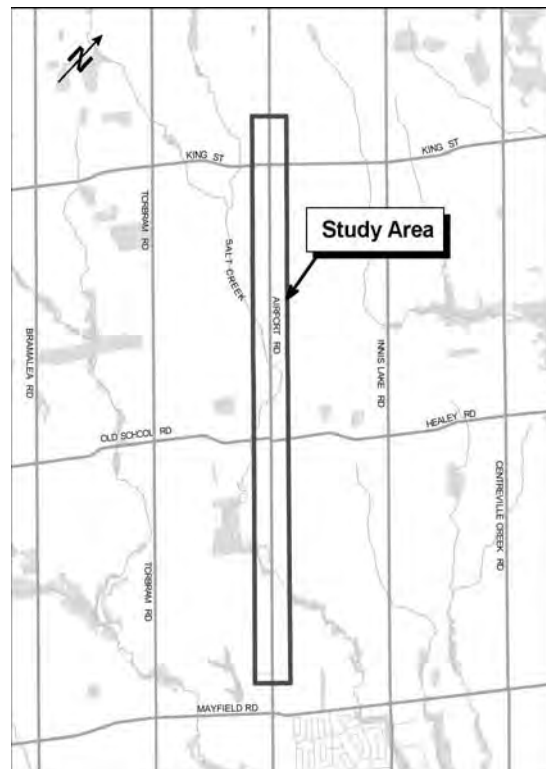
- public and agency consultation;
- an evaluation of road improvement alternatives;
- an assessment of the possible environmental effects of the improvements; and,
- the identification of reasonable means to mitigate any adverse impacts.

##### Public Information Centre

Two Public Information Centres (PICs) are planned for this study. The first PIC will use an informal drop-in centre format with display boards to present the study background information including:

- a problem statement;
- an evaluation of planning alternatives; and,
- a recommended planning alternative.

The Project Team members will be present to answer questions and discuss the next steps in the study. The first PIC is scheduled for:



**Date:** Thursday, June 20, 2013

**Time:** 6:30 p.m. - 8:30 p.m.

**Location:** Caledon Community Complex, 6215 Old Church Road

##### Comments and Information

Please visit our website: [www.peelregion.ca/pw/roads/enviro-assess/airport-road-ea.htm](http://www.peelregion.ca/pw/roads/enviro-assess/airport-road-ea.htm) for updates on this project. Comments and information regarding the study are being collected to assist the Region of Peel in meeting the requirements of the EA Act. This material will be maintained on file for use during the project and may be included in project documentation.

To provide comments or request additional information about this project, please contact:

**Sally Rook, C.Tech., PMP**  
Project Manager, Region of Peel  
10 Peel Centre Drive, Suite B, 4<sup>th</sup> Floor  
Brampton, ON L6T 4B9  
Telephone: 905-791-7800 ext. 7842  
Toll Free: 1-888-919-7800  
Fax: 905-791-1442  
Email: [sally.rook@peelregion.ca](mailto:sally.rook@peelregion.ca)

*The Region of Peel is committed to ensure that all Regional services, programs and facilities are inclusive and accessible for persons with disabilities. Please contact the Project Manager if you need any disability accommodations to participate in the PIC.*

With the exception of personal information, all comments will become part of the public record of the study. The study is being conducted according to the requirements of the Municipal Class Environmental Assessment, which is a planning process approved under Ontario's *Environmental Assessment Act*.



# Municipal Class Environmental Assessment

## AIRPORT ROAD ENVIRONMENTAL ASSESSMENT UPDATE from 1.0 km north of Mayfield Road to 0.6 km north of King Street, Town of Caledon



Update to Notice of Commencement

Issue No. 1: September 2012

## We've been busy!

Since you received the Notice of Commencement, we have:

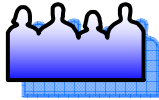
- a new contact person :
  - Sally Rook, Project Manager, 905-791-7800 x7842  
[Sally.rook@peelregion.ca](mailto:Sally.rook@peelregion.ca)
- retained IBI Group (Canada) Inc. for supporting technical studies in
  - Drainage and Storm Water Management Plans
  - Archaeology and Built Heritage
  - Noise Impact Assessment / Mitigation
  - Air Quality
  - Pavement and Geotechnical
  - Structures Assessment
- held a Project Kick-off Meeting with all Agencies;
- had an on-site meeting with the Toronto Regional Conservation Authority to identify watercourses, wetlands, areas of concern etc.;
- completed topographical survey for engineering information;
- completed Title Searches and Obtained Title Plans; and
- completed the preliminary traffic analysis.



# Municipal Class Environmental Assessment

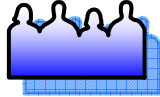


Technical Agency Project Kick-Off



Public Information Centre No. 2

Notice of Completion



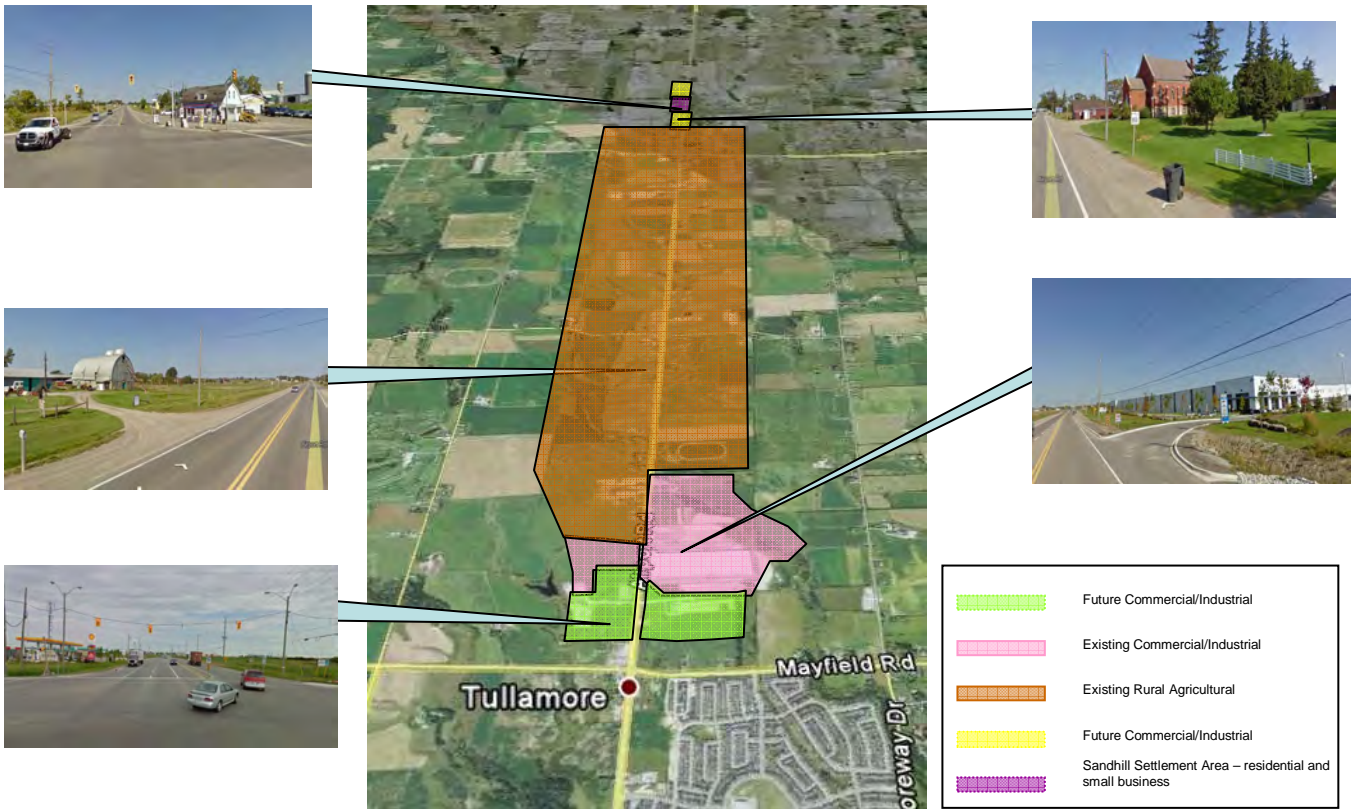
Public Information Centre No. 1

Environmental Study Report

This Environmental Assessment will incorporate elements from the Region's:

- Active Transportation Plan;
- Goods Movement Action Plan; and
- The Regional Road Characterization Study

*Notices will be sent to you with the date and location of our first Public Information Centre.  
Your input is valuable so we hope to see you there!*



Stay updated with us!

Visit the project website:  
[peelregion.ca/pw/roads/envIRON-assess/](http://peelregion.ca/pw/roads/envIRON-assess/) or

Sally Rook, Project Manager  
905-791-7800 x7842  
sally.rook@peelregion.ca





# Municipal Class Environmental Assessment UPDATE

## AIRPORT ROAD

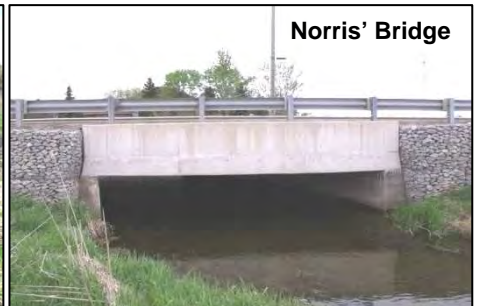
1.0 km north of Mayfield Rd. to 0.6 km north of King St.



Salt Creek Culvert



Deans Culvert



Norris' Bridge

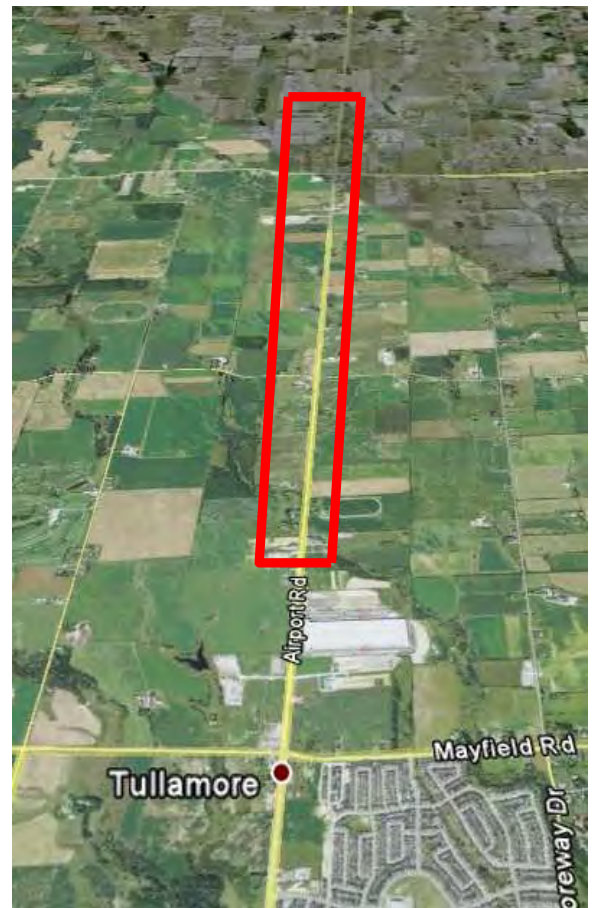
### Update to Public Information Centre #1

Issue No. 2: December 2013

Since we held PIC #1 on June 20<sup>th</sup>, 2013 we have completed Technical Studies including:

- Stage 1 Archaeology
- Noise Impact Assessment
- Air Quality Assessment
- Pavement and Geotechnical Report
- Natural Heritage Report
- Cultural Heritage Assessment Report
- Contaminated Site Screening Study
- Structures Investigation Report \*
- Geomorphic Assessment
- Hydrogeological Investigation

**\* Structures Investigation Report identified that all three crossing structures (Deans Culvert, Salt Creek Culvert and Norris' Bridge) need to be replaced. Widening the existing structures will not suffice.**



Stay updated with us!

Visit the project website:

[www.peelregion.ca/pw/roads/environmental-assess/airport-road-ea.htm](http://www.peelregion.ca/pw/roads/environmental-assess/airport-road-ea.htm)

Sally Rook, Project Manager  
905-791-7800 x7842  
sally.rook@peelregion.ca

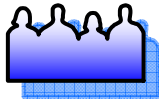
**Region of Peel**  
Working for you

# Municipal Class Environmental Assessment



Technical Agency Project Kick-Off

Aug 2012



Public Information Centre No. 2

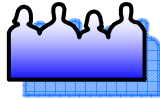
Jan 2013

June 2014

September 2014

November 2014

Notice of  
Completion



Public Information Centre No. 1

Environmental  
Study Report

Above is a revised project schedule showing that PIC #2 has been delayed due to the additional work and permits required based on replacing the structures.

## Stage 2 Archaeology

Early in the spring of 2014 the Region will complete a Stage 2 Archaeology investigation for approximately 40 properties along the Airport Road EA corridor. The Stage 2 work consists of digging small test pits by hand at 5 metre intervals in previously undisturbed areas and is done along the front of the property adjacent to the road. All test pits will be fully restored before staff leave the property. If your property has been identified as requiring Stage 2 Archaeology, a Regional representative will contact you to arrange 'Permission to Enter'.

This is a process wherein we obtain your written agreement for our consultant to enter your property to perform the Stage 2 Archaeology. If you would like to know if your property has been identified for this Stage 2 work or if you have any questions regarding the "Permission To Enter" agreement you may contact Joe Gallagher at (905) 791-7800 ext. 7763 or [joe.gallagher@peelregion.ca](mailto:joe.gallagher@peelregion.ca)



## Roundabouts



As presented at PIC #1, roundabouts are being considered at the intersections of Airport Rd/King St and Airport Rd/Old School Rd – Healey Rd.

We are currently working on designs for both roundabouts and traditional signalized intersections at these locations so that each can be assessed and a preferred option identified.

We are aware that large trucks, emergency vehicles and farm equipment need to be able to move through the intersections and will ensure that this is considered in the designs and evaluation.

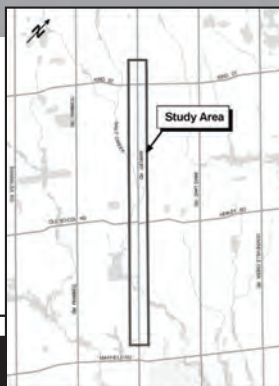
Notices will be sent to you with the date and location of our second Public Information Centre - Your input is valuable so we hope to see you there!

**Region of Peel**  
Working for you



## AIRPORT ROAD Municipal Class Environmental Assessment Study

1.0 km north of Mayfield Road to  
0.6 km north of King Street



Please join us at the  
second Public Information Centre

Thursday, November 27, 2014  
Caledon Community Complex, Caledon East  
6:00 pm to 8:00 pm

- ▶ Information presented will build on previous study recommendations and show the preliminary road design.
- ▶ Find out more about proposed roundabouts.

Your opinion matters and we welcome  
your participation!

For study background details visit us on-line at:  
[peelregion.ca/pw/transportation/enviro-assess/airport-road-ea.htm](http://peelregion.ca/pw/transportation/enviro-assess/airport-road-ea.htm)  
or call **Sally Rook** at 905-791-7800, ext. 7842

The Region of Peel is committed to ensure that all Regional services, programs and facilities are inclusive and accessible for persons with disabilities. Please contact the Project Manager if you need any disability accommodations to attend the PIC.

**NOTICE OF STUDY COMPLETION AIRPORT ROAD  
MUNICIPAL CLASS ENVIRONMENTAL ASSESSMENT STUDY FROM 1 KILOMETRE NORTH OF  
MAYFIELD ROAD TO 0.6 KILOMETRE NORTH OF KING STREET**

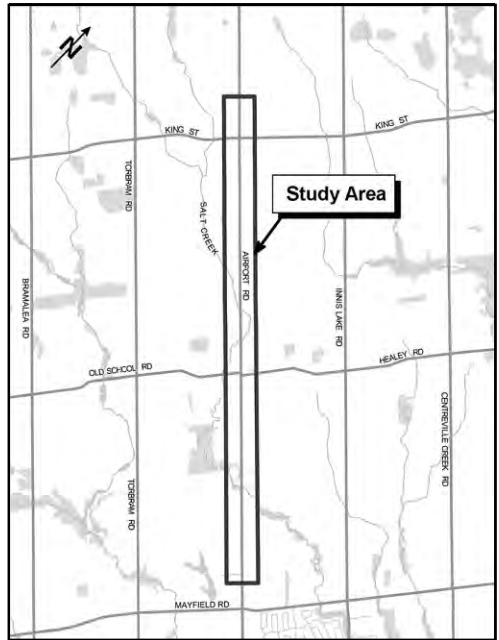
The study has been completed and the Environmental Study Report that details the planning, consultation and the decision-making process for the recommended design is available for review.

**ESR Review Period**

The study document will be available for review for **30 calendar days** at the three locations below starting **Thursday, Oct. 8** and ending on **Friday, Nov. 6, 2015**.

**Key recommendations include:**

- widening of Airport Road to 2 lanes in each direction, with a continuous centre left turning lane;
- roundabouts at the Healey Road/Old School Road and King Street intersections to improve safety and congestion;
- replacement of the 3 major bridge/culvert structures with larger structures that improve the function of Salt Creek for Species at Risk and allow for animal passage;
- an on-street bike lane (Active Transportation facility) within Sandhill; a paved shoulder in rural areas for cyclists; and sidewalks on both sides of the road within Sandhill and on new structures;
- improved stormwater management with new storm sewers in Sandhill and a treatment train approach in rural areas that includes oil and grit separators, infiltration trenches and enhanced bio-retention swales.



**Region of Peel Clerk's Department**

10 Peel Centre Dr.  
5th Floor, Suite A  
Brampton, ON L6T 4B9  
Phone: 905-791-7800 ext. 4526  
**Hours:**  
Mon - Fri: 8:30 a.m. - 4:30 p.m.

**Town of Caledon Clerk's Department**

6311 Old Church Rd.  
Caledon, ON L7C 1J6  
Phone: 905-584-2272  
**Hours:**  
Mon - Fri: 8:30 a.m. - 4:30 p.m.

**Town of Caledon Public Library**

Caledon East Branch  
6500 Old Church Rd.  
Caledon East, ON L7C 0H3  
Phone: 905-584-1456  
**Hours:**  
Monday Closed  
Tuesday 2 – 8:30 p.m.  
Wednesday 10 a.m. – 5 p.m.  
Thursday 2 – 8:30 p.m.  
Friday Closed  
Saturday 10 a.m. – 4 p.m.  
Sunday Closed

Please visit our website for more information:  
[peelregion.ca/pw/transportation/enviro-assess/airport-road-ea.htm](http://peelregion.ca/pw/transportation/enviro-assess/airport-road-ea.htm)

Written comments should be provided to **Sally Rook, Project Manager**, within the 30 day review period. If you have concerns that cannot be resolved, you may request that the Minister of the Environment and Climate Change make an Order for the project to comply with **Part II of the Environmental Assessment Act**, which addresses individual environmental assessments. The Minister must receive the request at the address below by 4:30 p.m. on Friday, Nov. 6, 2015.

**The Honourable Glen Murray, Minister**  
Ministry of the Environment and Climate Change  
77 Wellesley St. West, 11<sup>th</sup> Floor, Ferguson Block  
Toronto, ON M7A 2T5

**A copy of the Part II Order request must also be sent to the project manager at the following address:**

Sally Rook, C.Tech, PMP  
Project Manager  
Infrastructure Programming and Studies  
Transportation Division  
Region of Peel  
10 Peel Centre Dr., 4<sup>th</sup> Floor, Suite B  
Brampton, ON L6T 4B9  
Tel: 905 791-7800 ext. 7842 • Email: [sally.rook@peelregion.ca](mailto:sally.rook@peelregion.ca)

If no Part II Order requests are received then the Region may proceed with the detailed design and construction of the recommended works as presented in the study.

This notice was first issued on October 8, 2015.

February 1, 2011

**Resident Letter sent for Notice of Commencement**

Dear: Property Owner

**RE: Notice of Study Commencement for Airport Road, from 1km north of  
Mayfield Road to 0.6km north of King Street, Caledon**

---

The Regional Municipality of Peel is initiating a Schedule 'C' Class Environmental Assessment Study to investigate improvements to Airport Road from 1 km north of Mayfield Road to .6km north of King Street. A copy of the Notice of Study Commencement is enclosed.

The study will:

- review current and future levels of service on Airport Road with consideration for existing conditions and future growth and development along the corridor;
- identify problems and opportunities for improvements; and
- recommend a solution through a comprehensive and environmentally sound planning process, with public participation.

A key component of the study will be consultation with interested stakeholders (public and regulatory agencies) including two Public Information Centres (PICs). Details regarding the forthcoming PICs will be advertised as the study progresses.

If you wish to provide any comments on this study, prior to the first PIC, we request that your comments be directed to us no later than **March 1, 2012**.

Through the next few months, a topographic survey will be conducted along Airport Road. Please note:

- A topographic survey identifies and records the existing physical and natural features on the ground such as driveways, trees, signs, etc.;
- the Region will be conducting actual field measurements for topographic survey;
- measurements may be taken slightly beyond the road allowance, on your property;
- this fieldwork will not involve any heavy equipment; and
- will only involve people walking on the property for short periods of time for measurement purposes.

If there is any concern with the survey fieldwork being conducted on your property, please contact us immediately.

---

**Public Works**

10 Peel Centre Dr., Suite B, Brampton, ON L6T 4B9  
Tel: 905-791-7800 [www.peelregion.ca](http://www.peelregion.ca)



In addition to the field survey, sub-consultants working for the Region will be in the area to perform various forms of fieldwork including a natural features survey, archeological assessment, surface water and groundwater surveys and a geotechnical borehole investigation. This work will be completed from spring 2012 to summer 2012.

Thank you for your assisting us in the identification of pertinent issues affecting this project and your attention to this matter.

Sincerely,

**Solmaz Zia, P.Eng.**

Project Manager | Transportation Program Planning  
Transportation Division

Phone: 905-791-7800 ext. 7845

Fax: 905-791-1442

Email: [solmaz.zia@peelregion.ca](mailto:solmaz.zia@peelregion.ca)

Encl.: Notice of Study Commencement and “Fax Back” Response Form

---

**Public Works**

10 Peel Centre Dr., Suite B, Brampton, ON L6T 4B9

Tel: 905-791-7800 [www.peelregion.ca](http://www.peelregion.ca)

May 10, 2013  
Project number: 12-4380

**Resident Letter for Notice of PIC#1**

Re: «PROPERTY\_LOCATION»

Dear Property Owner:

Re: **Notice of Public Information Centre No. 1- Class Environmental Assessment Study for Improvements to Airport Road (R.R.#7) from approx. 1.0km north of Mayfield Road (R.R. #14) to approx. 0.6km north of King Street (R.R. #9)**

The Region of Peel has initiated a Municipal Class Environmental Assessment Schedule 'C' Study to widen Airport Road from 1.0km north of Mayfield Road to 0.6km north of King Street. Opportunities will also be examined to provide pedestrian and cycling facilities. The purpose of this letter is to invite you of the first Public Information Centre (PIC) scheduled for June 20<sup>th</sup> at Caledon Community Complex. Details of the PIC are on the reverse side of this letter.

The first PIC will be an informal drop-in centre with display information on the study findings to date including the existing conditions, the problem and opportunity statement, the evaluation of alternative solutions and the preliminary recommended solution.

This is a great opportunity to be heard, to ask questions, review project information, consider the preliminary recommended solution, and provide input on the project. Your input is valuable and I look forward to meeting you and discussing this project with you.

If you cannot attend the PIC or wish to provide comments prior to the PIC, you may send your comments on the attached comment sheet or by letter, fax or e-mail. The information boards will be posted on the Region's website following the PIC at [www.peelregion.ca/pw/roads/environ-assess/airport-road-ea.htm](http://www.peelregion.ca/pw/roads/environ-assess/airport-road-ea.htm).

Sincerely,



**Sally Rook, C.Tech., PMP**  
Project Manager, Transportation Program Planning  
Phone No.: 905-791-7800 ext. 7842  
Fax No.: 905-791-1442  
Email: [sally.rook@peelregion.ca](mailto:sally.rook@peelregion.ca)

---

**Public Works**

10 Peel Centre Dr., Suite B, Brampton, ON L6T 4B9  
Tel: 905-791-7800 [www.peelregion.ca](http://www.peelregion.ca)

November 13, 2014

Resident letter sent for PIC#2

Dear Property Owner:

**Re: Notice of Public Information Centre (PIC) No. 2  
Class Environmental Assessment Study for Improvements to Airport Road  
from 1.0km north of Mayfield Road to 0.6km north of King Street**

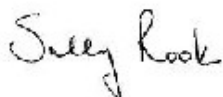
The Region of Peel commenced a Municipal Class Environmental Assessment Schedule 'C' Study in February 2012 to study improvements to Airport Road within the above study limits. The purpose of this letter is to invite you to the **second** and **final** Public Information Centre (PIC) on **November 27th** at the Caledon Community Complex in Caledon East. Details of the PIC are on the reverse side of this letter.

This final PIC will be presented as an informal drop-in centre with display information on the study findings to date including the **recommended alternative design** and proposed **property impacts**. **Come and find out about how two-lane roundabouts work.**

This is a great opportunity to be heard, to ask questions, review project information, talk with our project team and provide input on the project. Your participation is important and I look forward to meeting you.

If you cannot attend the PIC and wish to provide comment, please visit our website and use our interactive comment box or, send comments using the attached comment sheet by letter, fax or e-mail. The information boards will be posted on the Region's website following the PIC at [www.peelregion.ca/pw/roads/environ-assess/airport-road-ea.htm](http://www.peelregion.ca/pw/roads/environ-assess/airport-road-ea.htm).

Sincerely,



**Sally Rook, C.Tech., PMP**  
Project Manager, Infrastructure Programming & Studies  
Phone No.: 905-791-7800 ext. 7842  
Fax No.: 905-791-1442  
Email: [sally.rook@peelregion.ca](mailto:sally.rook@peelregion.ca)

---

**Public Works**

10 Peel Centre Dr., Suite B, Brampton, ON L6T 4B9  
Tel: 905-791-7800 [www.peelregion.ca](http://www.peelregion.ca)



November 13, 2014

Letter sent to residents identified for Stage 2  
Archaeology Assessment

Dear Property Owner:

**Re: Stage 2 Archaeological Assessment  
«PROPERTY\_LOCATION»**

As part of the ongoing **Airport Road Environment Assessment Study**, properties have been identified that could have archaeological potential and require further investigation.

Previously you provided us with your legal permission to enter onto your land and conduct all necessary field works, and we promised to give you advance notice of when this work is to take place.

The Stage 2 Archaeological Assessment will be conducted between:

**Wednesday November 19 to Friday November 21  
from 8 a.m. to 4 p.m.**

If you require further information please contact me.

Sincerely,



**Sally Rook, C.Tech., PMP**

Project Manager, Infrastructure Programming & Studies

Phone No.: 905-791-7800 ext. 7842

Fax No.: 905-791-1442

Email: [sally.rook@peelregion.ca](mailto:sally.rook@peelregion.ca)

**PUBLIC MAILING LIST**

<b>COMPANY</b>	<b>MAILING1</b>	<b>MAILING2</b>	<b>CITY - PROVINCE</b>	<b>POSTAL CODE</b>	<b>PROPERTY LOCATION</b>
1231831 ONTARIO LIMITED		3 MARION ST	CALEDON ON	L7C 1K6	14001 AIRPORT RD
1274181 ONTARIO LTD	RR 5	13069 AIRPORT RD	CALEDON ON	L7C 2X5	13069 AIRPORT RD
1279414 ONTARIO INC	5 DONWOODS CRT		BRAMPTON ON	L6P 1C5	11 PERDUE CRT
1301054 ONTARIO LIMITED	RR 5	13959 AIRPORT RD	CALEDON ON	L7C 2X6	13959 AIRPORT RD
13726 A HOLDINGS LTD	18 THORNBANK RD		THORNHILL ON	L4J 2A2	13726 AIRPORT RD
1507674 ONTARIO INC	34 KING'S CROSS AVE		RICHMOND HILL ON	L4B 2S9	13660 AIRPORT RD
1595759 ONTARIO LIMITED	12101 AIRPORT RD		CALEDON ON	L7C 2X3	12101 AIRPORT RD
1638826 ONTARIO INC	23 THOROUGHNBRED CRES		ETOBICOKE ON	M9W 6X6	AIRPORT RD PROPERTY PROPERTY AT CON 1 ALB PT LOT 6
2159642 ONTARIO INC	4229 SCHNEIDER CRT		MISSISSAUGA ON	L5B 3N8	6017-6035 KING ST
2170327 ONTARIO INC	12640 INNIS LAKE RD		CALEDON ON	L7C 2Y4	5992 KING ST
2272375 ONTARIO INC	27 SKELTON BLVD		BRAMPTON ON	L6V 2P7	AIRPORT RD PROPERTY
2278828 ONTARIO INC	27 SKELTON BLVD		BRAMPTON ON	L6V 2P7	33 PERDUE CRT
2301098 ONTARIO INC	1034 MARTIN GROVE RD		ETOBICOKE ON	N9W 4W1	12484 AIRPORT RD
2329806 ONTARIO INC	12484 AIRPORT RD		CALEDON ON	L7C 2W1	13940 AIRPORT RD
2377544 ONTARIO INC	38 GARRIOAK DR		VAUGHAN ON	L4L 8S7	13941 AIRPORT RD
6259901 CANADA INC	14 FAIRHILL AVE		BRAMPTON ON	L7A 2A9	AIRPORT RD PROPERTY
815812 ONTARIO LIMITED	96 MADISON ST		BRAMPTON ON	L6S 3C5	AIRPORT RD PROPERTY
893869 ONTARIO LIMITED	7055 DALEWOOD DR 700 APPLEWOOD CRES SUITE		MISSISSAUGA ON	L4T 4G1	6034 MAYFIELD RD
AIRFIELD DEVELOPMENTS INC	100		CONCORD ON	L4K 5X3	13846 AIRPORT RD
AIRPORT KING INC	23 THOROUGHNBRED CRES		TORONTO ON	M9W 6X6	
AMB AIRPORT ROAD CANCO INC	C/O AMB PROPERTY CORPORATION 13432 AIRPORT RD 13095 AIRPORT RD 13819 AIRPORT RD 12620 AIRPORT RD 5066 TERRY FOX WAY 5937 KING ST	60 STATE ST SUITE 1200 RR 5  RR 5	BOSTON MA USA CALEDON EAST ON CALEDON ON CALEDON EAST ON CALEDON ON MISSISSAUGA ON CALEDON ON	02109 L7C 2W3 L7C 2X5 L7C 2X6 L7C 2W2 L5V 1R7 L7C 0V1	12203 AIRPORT RD 13432 AIRPORT RD 13095 AIRPORT RD 13819 AIRPORT RD 12620 AIRPORT RD AIRPORT RD PROPERTY 5937 KING ST

BRENTVIEW CONSTRUCTION  
LIMIT

2334 SHEPPARD AVE W  
13341 AIRPORT RD  
2418 OLD CARRIAGE RD

NORTH YORK ON M9M 1M3  
CALEDON EAST ON L7C 2X5  
MISSISSAUGA ON L5C 3G4

13123 AIRPORT RD  
13341 AIRPORT RD  
AIRPORT RD PROPERTY  
PROPERTY AT CON 1 ALB

20 BYNG AVE  
12366 AIRPORT RD RR 5  
10650 THE GORE RD  
PO BOX 40600 RPO SIX POINTS  
PLAZ

ETOBICOKE ON M9W 2M4  
CALEDON ON L7C 2W1  
BRAMPTON ON L6P 0A5

PT LOT 4 PCL 1  
12366 AIRPORT RD  
AIRPORT RD PROPERTY

13309 AIRPORT RD  
12333 AIRPORT RD  
6046 KING ST RR 5  
14057 AIRPORT RD  
14045 AIRPORT RD  
6028 HEALEY RD  
13759 AIRPORT RD  
13759 AIRPORT RD

ETOBICOKE ON M9B 6K8  
CALEDON ON L7C 2X5  
CALEDON ON L7C 2X3  
CALEDON ON L7C 0S1  
CALEDON ON L7C 2X7  
CALEDON EAST ON L7C 2X7  
CALEDON EAST ON L7C 0W7  
CALEDON ON L7C 2X6  
CALEDON ON L7C 2X6

12542 AIRPORT RD  
13309 AIRPORT RD  
AIRPORT RD PROPERTY  
6046 KING ST  
14057 AIRPORT RD  
14045 AIRPORT RD  
6028 HEALEY RD  
13755-13759 AIRPORT RD  
13789 AIRPORT RD  
12445 and 12439 AIRPORT

12445 AIRPORT RD  
13803 AIRPORT RD  
6035 HEALEY RD  
13221 AIRPORT RD

CALEDON ON L7C 2X3  
CALEDON EAST ON L7C 2X6  
CALEDON ON L7C 0X1  
CALEDON ON L7C 2X5

RD  
13803 AIRPORT RD  
6035 HEALEY RD  
13221 AIRPORT RD

DHILLON BUSINESS CENTRE  
INC

13790 AIRPORT RD  
12389 AIRPORT RD  
  
10 ACME CRES  
13972 AIRPORT RD RR 5  
13972 AIRPORT RD  
13839 AIRPORT RD

CALEDON EAST ON L7C 2W4  
CALEDON ON L7C 2X3  
ETOBICOKE ON M9R 3B8  
CALEDON EAST ON L7C 2W4  
CALEDON EAST ON L7C 2W4  
CALEDON ON L7C 2X6

13790 AIRPORT RD  
12389 AIRPORT RD  
AIRPORT RD PROPERTY  
13972 AIRPORT RD  
5969 KING ST  
13839 AIRPORT RD  
12958 and 12926 AIRPORT  
RD and 5754 OLD SCHOOL

EARLVALE FARMS  
13256 AIRPORT RD RR 5

CALEDON EAST ON L7C 2W2  
CALEDON EAST ON L7C 2W3

RD  
13256 AIRPORT RD



EVERGREEN HOLDINGS LIMITED	13210 AIRPORT RD		CALEDON EAST ON	L7C 2W3	13210 AIRPORT RD
	3409 PONDEROSA ST		ABBOTSFORD BC	V2T 5G3	AIRPORT RD PROPERTY
	13392 AIRPORT RD		CALEDON EAST ON	L7C 2W3	13392 AIRPORT RD
	76 CLANTON PARK RD		NORTH YORK ON	M3H 2E1	AIRPORT RD PROPERTY
GIAMPAOLO INVESTMENTS LIMITED	471 INTERMODAL DR		BRAMPTON ON	L6T 5G4	13291 AIRPORT RD
	6045 HEALEY RD	RR 5	CALEDON ON	L7C 0X1	6045 HEALEY RD
	23 ROCKWELL RD		RICHMOND HILL ON	L4B 1A9	AIRPORT RD PROPERTY
	13213 AIRPORT RD		CALEDON EAST ON	L7C 2X5	13213 AIRPORT RD
HARVEST GOLD DEVELOPMENTS INC.	30 FLORAL PKY		CONCORD ON	L4K 4R1	22 PERDUE CRT
HERBERT M DAVIS CONSTRUCTION	ATTN MRS SUSAN GIDGE	12151 AIRPORT RD	CALEDON EAST ON	L7C 2X3	12151 AIRPORT RD PROPERTY AT CON 6 EHS PT LOT 23
HND INVESTMENTS INC	18 RAE AVE		BRAMPTON ON	L6P 0E9	6065 KING ST
	6065 KING ST	RR 5	CALEDON ON	L7C 0V2	
HOPEWELL AIRPORT ROAD GP COR	1122 4TH ST SW UNIT 600		CALGARY AB	T2R 1M1	12333 AIRPORT RD
HOPEWELL AIRPORT ROAD GP COR	1122 4TH ST SW SUITE 600		CALGARY AB	T2R 1M1	12347 AIRPORT RD
IO INVESTMENTS LIMITED	12245 TORBRAM RD	RR 4	CALEDON EAST ON	L7C 2T4	12245 TORBRAM RD
J DHAMI HOLDINGS INC	7325 BRAMALEA RD		MISSISSAUGA ON	L5S 1C5	12863 AIRPORT RD
	13857 AIRPORT RD		CALEDON ON	L7C 2X6	13857 AIRPORT RD PROPERTY AT PT LT 4 CON
KIVU HOLDINGS LTD	140 MANHATTAN DR		MARKHAM ON	L3P 7S1	1 ALBION
L O L 184 SANDHILL	MIKE NIXON	4 MCCAUL ST	BRAMPTON ON	L6V 1H9	AIRPORT RD PROPERTY
LAFARGE CANADA INC	6509 AIRPORT RD		MISSISSAUGA ON	L4V 1S7	22 PERDUE CRT
LIDLAW TRANSIT LTD	1111 INTERNATIONAL BLVD		BURLINGTON ON	L7L 6W1	12117 AIRPORT RD
	5945 KING ST		CALEDON ON	L7C 0V1	5945 KING ST
	218 DEERCHASE CIR		WOODBRIIDGE ON	L4H 1G9	13441 AIRPORT RD
	13329 AIRPORT RD		CALEDON ON	L7C 2X5	13329 AIRPORT RD
	13013 AIRPORT RD		CALEDON ON	L7C 2X5	13013 AIRPORT RD
	13380 AIRPORT RD		CALEDON EAST ON	L7C 2W3	13380 AIRPORT RD

	267 ALDERCREST RD		ETOBICOKE ON	M8W 4J9	AIRPORT RD PROPERTY
	4146 EAST HOPE		MESA AZ USA	85205	AIRPORT RD PROPERTY
	2 IMPERIAL CRT		WOODBIDGE ON	L4L 3T9	KING ST PROPERTY
	13319 AIRPORT RD		CALEDON ON	L7C 2X5	13319 AIRPORT RD
	105 VAN SCOTT DR		BRAMPTON ON	L7A 1M5	13793 AIRPORT RD
NANAKSAR SATSANG SABHA OF ONTARIO	64 TIMBERLANE DR		BRAMPTON ON	L6Y 4V7	13195 AIRPORT RD
	13285 AIRPORT RD		CALEDON ON	L7C 2X5	13285 AIRPORT RD
	5962 OLD SCHOOL RD	RR 5	CALEDON EAST ON	L7C 0W6	5962 OLD SCHOOL RD
	5964 KING ST		CALEDON ON	L7C 0R9	5964 KING ST
	13879 AIRPORT RD		CALEDON ON	L7C 2X6	13879 AIRPORT RD
	13598 AIRPORT RD		CALEDON EAST ON	L7C 2W4	13598 AIRPORT RD
	13531 AIRPORT RD		CALEDON ON	L7C 2X6	13531 AIRPORT RD
	12404 AIRPORT RD		CALEDON ON	L7C 2W1	12404 AIRPORT RD
	6040 HEALEY RD	RR 5	CALEDON ON	L7C 0W7	6040 HEALEY RD
	13869 AIRPORT RD		CALEDON ON	L7C 2X6	13869 AIRPORT RD
	6051 KING ST	RR 5	CALEDON ON	L7C 0V2	6051 KING ST
	13198 AIRPORT RD	RR 5	CALEDON ON	L7C 2W3	13198 AIRPORT RD
	13588 AIRPORT RD		CALEDON EAST ON	L7C 2W4	13588 AIRPORT RD
	435 CHANCELLOR DR		WOODBIDGE ON	L4L 5E1	13792 AIRPORT RD
SANDHILL UNITED CHURCH	C/O GRANT SHERMAN	13595 TORBRAM	CALEDON ON	L7C 2T7	13889 AIRPORT RD
	5961 KING ST		CALEDON ON	L7C 0V1	5961 KING ST
	5968 KING ST		CALEDON ON	L7C 0R9	5968 KING ST
	12394 AIRPORT RD		CALEDON ON	L7C 2W1	12394 AIRPORT RD
SHILOH APOSTOLIC CHURCH INC		515 TOBACCO RD,			
	C/O COLLEEN BROWN	RR 2	CASTLETON ON	K0K 1M0	6060 KING ST
	122 TORII ST		WOODBIDGE ON	L4L 5L5	13949 AIRPORT RD
	12374 AIRPORT RD	RR 5	CALEDON ON	L7C 2W1	12374 AIRPORT RD
	13958 AIRPORT RD		CALEDON EAST ON	L7C 2W4	13958 AIRPORT RD
					13571 AIRPORT RD &
	13571 AIRPORT RD		CALEDON ON	L7C 2X6	13649 AIRPORT RD
	6055 HEALEY RD	RR 5	CALEDON ON	L7C 0X1	6055 HEALEY RD
SPRINGCOVE DEVELOPMENTS INC	2220 HIGHWAY 7 UNIT 5		CONCORD ON	L4K 1W7	13440 AIRPORT RD

	13186 AIRPORT RD	RR 5	CALEDON EAST ON	L7C 2W3	13186 AIRPORT RD
	12451 AIRPORT RD		CALEDON ON	L7C 2X3	12451 AIRPORT RD
	13299 AIRPORT RD		CALEDON ON	L7C 2X5	13299 AIRPORT RD
TORBRAM ELECTRIC SUPPLY CORPORATION	10 PERDUE CRT, UNIT 6		CALEDON ON	L7C 3M6	10 PERDUE CRT
TORONTO SUNGRAK CHURCH	12541 AIRPORT RD		CALEDON EAST ON	L7C 2X4	12541 AIRPORT RD
TORONTO SUNGRAK CHURCH	12577 AIRPORT RD		CALEDON ON	L7C 2X4	12577 AIRPORT RD
	14198 AIRPORT RD		CALEDON EAST ON	L7C 2W5	5958 KING ST
	14235 TORBRAM RD	RR 4	CALEDON ON	L7C 2T8	5958 KING ST
	173 ADVANCE BLVD UNIT 55		BRAMPTON ON	L6T 4Z7	AIRPORT RD PROPERTY
	13845 AIRPORT RD		CALEDON ON	L7C 2X6	13845 AIRPORT RD
	31 FOXMEAD RD		TORONTO ON	M9R 1E3	
	10 BARBARA PLACE		CALEDON ON	L7E 0E3	
	16962 MOUNTAINVIEW RD		CALEDON ON	L7C 2V8	
	22 TRAILSIDE DRIVE		BRAMPTON ON	L6S 6J1	
	19 MARILYN STREET		CALEDON EAST ON		
GAGNON AND LAW URBAN PLANNERS	21 QUEEN STREET EAST, SUITE 500		BRAMPTON ON	L6W 3P1	
ASHLEE RIVET c/o WESTON CONSULTING	201 MILLWAY AVE., SUITE 19		VAUGHAN ON	L4K 5K8	AIRPORT RD PROPERTY
	5894 OLD SCHOOL ROAD		CALEDON ON	L7C 0W6	5894 OLD SCHOOL ROAD
	10650 THE GORE RD		BRAMPTON ON	L6P 0A5	PROPERTY AT CON 1 ALB PT LOT 4 PCL 2



**Stage 2 Archaeology Locations Mailing List**

<b>PROPERTY LOCATION</b>	<b>MAILING1</b>	<b>MAILING2</b>	<b>CITY - PROVINCE</b>	<b>POSTAL CODE</b>	<b>ARCH2 LETTER</b>
13660 AIRPORT RD PROPERTY AT CON 1 ALB PT LOT 6	34 KING'S CROSS AVE		RICHMOND HILL ON	L4B 2S9	x
AIRPORT RD PROPERTY	4229 SCHNEIDER CRT		MISSISSAUGA ON	L5B 3N8	x
AIRPORT RD PROPERTY	7 KEZIA CRESCENT		CALEDON ON	L7C 3T2	x
13940 AIRPORT RD	7 KEZIA CRESCENT		CALEDON ON	L7C 3T2	x
12620 AIRPORT RD	38 GARRIOAK DR		VAUGHAN ON	L4L 8S7	x
AIRPORT RD PROPERTY	12620 AIRPORT RD	RR 5	CALEDON ON	L7C 2W2	x
	5066 TERRY FOX WAY PO BOX 40600 RPO SIX		MISSISSAUGA ON	L5V 1R7	x
12542 AIRPORT RD	POINTS PLAZ		ETOBICOKE ON	M9B 6K8	x
6046 KING ST	6046 KING ST	RR 5	CALEDON ON	L7C 0S1	x
13755-13759 AIRPORT RD	13759 AIRPORT RD		CALEDON ON	L7C 2X6	x
13790 AIRPORT RD PROPERTY AT CON 6 EHS PT LOT 23	13790 AIRPORT RD		CALEDON EAST ON	L7C 2W4	x
13195 AIRPORT RD	18 RAE AVE		BRAMPTON ON	L6P 0E9	x
13879 AIRPORT RD	64 TIMBERLANE DR		BRAMPTON ON	L6Y 4V7	x
13949 AIRPORT RD	13879 AIRPORT RD		CALEDON ON	L7C 2X6	x
13958 AIRPORT RD	122 TORII ST		WOODBIDGE ON	L4L 5L5	x
13571 AIRPORT RD & 13649 AIRPORT RD	13958 AIRPORT RD		CALEDON EAST ON	L7C 2W4	x
13440 AIRPORT RD	13571 AIRPORT RD		CALEDON ON	L7C 2X6	x
12541 AIRPORT RD	2220 HIGHWAY 7 UNIT 5		CONCORD ON	L4K 1W7	x
12577 AIRPORT RD	12541 AIRPORT RD		CALEDON EAST ON	L7C 2X4	x
12439 AIRPORT RD	12577 AIRPORT RD		CALEDON ON	L7C 2X4	x
AIRPORT RD PROPERTY	12439 AIRPORT RD		CALEDON ON	L7C 2X3	
AIRPORT RD PROPERTY	10650 THE GORE RD		BRAMPTON ON	L6P 0A6	x
AIRPORT RD PROPERTY	140 MANHATTAN DR		MARKHAM ON	L3P 7S1	x
AIRPORT RD PROPERTY	2418 OLD CARRIAGE RD		MISSISSAUGA ON	L5C 3G4	x
AIRPORT RD PROPERTY	267 ALDERCREST RD		ETOBICOKE ON	M8W 4BJ	x
AIRPORT RD PROPERTY	23 ROCKWELL RD		RICHMOND HILL ON	L4B 1A9	x
KING ST PROPERTY	2 IMPERIAL COURT		WOODBIDGE ON	L4L 3T9	x

WILLIAM A. WILSON IN TRUST

PROPERTY ON AIRPORT RD	4 MCCAUL STREET	BRAMPTON ON	L6V 1H9	x
SANDHILL UNITED CHURCH	13595 TORBRAM RD	CALEDON ON	L7C 2X6	x
AIRPORT RD PROPERTY	11224TH STREET SW, UNIT 600	CALGARY AB	T2R 1M1	x

February 1, 2012

Letter sent to Agencies for Study Commencement

**Re: Notice of Study Commencement, Class Environmental Assessment for Airport Road, from 1km north of Mayfield Road to 0.6km north of King Street, Caledon**

The Region of Peel is initiating a Municipal Class Environmental Assessment (Class EA) Study for improvements to Airport Road, from 1km north of Mayfield Road to 0.6km north of King Street, in the Town of Caledon. The purpose of this letter is to inform you of the study and to invite your input. A copy of the notice is attached.

The study is being conducted in accordance with the approved requirements for a Schedule "C" project as described in the Municipal Engineers Association's Municipal Class Environmental Assessment (EA) document (October 2000, as amended in 2007).

The study will:

- review current and future levels of service on Airport Road with consideration for existing conditions and future growth and development along the corridor;
- identify problems and opportunities for improvements; and
- recommend a solution through a comprehensive and environmentally sound planning process, with public participation.

A key component of the study will be consultation with interested stakeholders (public and regulatory agencies) including two Public Information Centres (PICs). Details regarding the PICs will be advertised as the study progresses.

Over the next few weeks, the Region's project team, including a number of environmental sub-consultants, may contact your office directly for information or mapping related to environmental conditions for the study area. Your assistance with our study is greatly appreciated.

You may use the enclosed response form to request additional information or provide comments about the study.

Sincerely,



**Solmaz Zia, P.Eng.**

Project Manager | Transportation Program Planning

Transportation Division

Phone: 905-791-7800 ext. 7845

Fax: 905-791-1442

Email: [solmaz.zia@peelregion.ca](mailto:solmaz.zia@peelregion.ca)

Encl.: Notice of Study Commencement and "Fax Back" Response Form

May 10, 2013  
Project number: 12-4380

Letter sent to agencies for PIC#1

**Re: Notice of Public Information Centre No. 1- Class Environmental Assessment Study for Improvements to Airport Road (R.R.#7) from approx. 1.0km north of Mayfield Road (R.R. #14) to approx. 0.6km north of King Street (R.R. #9)**

The Region of Peel has initiated a Municipal Class Environmental Assessment Schedule 'C' Study to widen Airport Road from 1.0km north of Mayfield Road to 0.6km north of King Street. Opportunities will also be examined to provide pedestrian and cycling facilities. The purpose of this letter is to invite you of the first Public Information Centre (PIC), scheduled for June 20<sup>th</sup> at the Caledon Community Complex. A copy of the Notice is on the reverse side of this letter with detailed information.

This study is being undertaken as a Schedule 'C' project in accordance with the requirements of the Municipal Class Environmental Assessment (October 2000, as amended in 2007 and 2011).

The first PIC will be an informal drop-in centre with display information on the study findings to date including the existing conditions, the problem and opportunity statement, the evaluation of alternative solutions and the preliminary recommended solution. The PIC provides stakeholders with the opportunity to ask questions, review project information, consider the preliminary recommended solution, and provide input on the project.

If you are unable to attend the PIC but wish to provide comments or request additional information, please contact me. The information boards will be posted on the Region's website following the PIC.

Sincerely,



**Sally Rook, C.Tech., PMP**

Project Manager, Transportation Program Planning

Phone No.: 905-791-7800 ext. 7842

Fax No.: 905-791-1442

Email: [sally.rook@peelregion.ca](mailto:sally.rook@peelregion.ca)

---

**Public Works**

10 Peel Centre Dr., Suite B, Brampton, ON L6T 4B9

Tel: 905-791-7800 [www.peelregion.ca](http://www.peelregion.ca)

November 13, 2014

Letter sent to Agencies for PIC#2

Re: **Notice of Public Information Centre No. 2**  
**Municipal Class Environmental Assessment Study for Improvements to Airport Road**  
**from 1.0km north of Mayfield Road to 0.6km north of King Street**

The Region of Peel commenced a Municipal Class Environmental Assessment Schedule 'C' Study in February 2012 to study improvements to Airport Road within the above study limits. The purpose of this letter is to invite you to the **second** and **final** Public Information Centre (PIC) on **November 27th** at the Caledon Community Complex in Caledon East. Details of the PIC are on the reverse side of this letter.

This final PIC will be presented as an informal drop-in centre with display information on the study findings to date including the **recommended alternative design** and proposed **property impacts and roundabouts**.

If you cannot attend the PIC and wish to provide comment, please visit our website and use our interactive comment box or, send comments using the attached comment sheet by letter, fax or e-mail. The information boards will be posted on the Region's website following the PIC at [www.peelregion.ca/pw/roads/enviro-assess/airport-road-ea.htm](http://www.peelregion.ca/pw/roads/enviro-assess/airport-road-ea.htm).

Sincerely,



**Sally Rook, C.Tech., PMP**  
Project Manager, Infrastructure Programming & Studies  
Phone No.: 905-791-7800 ext. 7842  
Fax No.: 905-791-1442  
Email: [sally.rook@peelregion.ca](mailto:sally.rook@peelregion.ca)

---

**Public Works**

10 Peel Centre Dr., Suite B, Brampton, ON L6T 4B9  
Tel: 905-791-7800 [www.peelregion.ca](http://www.peelregion.ca)



**AGENCY MAILING LIST**

<b>Agency/Organization</b>	<b>First Name</b>	<b>Last Name</b>	<b>Position</b>	<b>Address1</b>	<b>Address 2</b>	<b>City/Province/PC</b>
Canadian Environmental Protection Agency	Duck	Kim	Senior Program Officer	55 St. Clair Avenue East	Room 907	Toronto, ON M4T 1M2
Environment Canada, Ontario Region	Rob	Dobos	Head EA Section, Ontario Region	867 Lakeshore Road	PO Box 5050	Burlington, ON L7R 4AR
Fisheries and Oceans Canada	Cindy	Latendresse	Admin Assistant / Coordinator, District Office	3027 Harvester Road	Unit 304	Burlington, ON L7R 4K3
Health Canada, Ontario Region			Regional Environmental Assessment	180 Queen Street West		Toronto, ON M5V 3L7
Parks Canada, Historic Site & Monument Board	Marie-Josée	Lemieux		25 Eddy Street		Gatineau, QC K1A 0M5
Canadian Transport Agency	Jeannette	Anderson	Enforcement Officer	4900 Yonge Street	Suite 300	Toronto, ON M2N 6A5
Transport Canada, Ontario Region			Environmental Assessment Coordinator	4900 Yonge Street,	Suite 300	Toronto, ON M2N 6A5
Ministry of the Environment	Dan	Panko	Supervisor, APEP, Air, Pesticide and Environmental Planning	5775 Yonge Street	9th Floor	North York, ON M2M 4J1
Ministry of the Environment	Tracy	Goodwin	District Manager, Halton-Peel District Office	4145 North Service Road	Suite 3000	Burlington, ON L7L 6A3
Ministry of Environment – Central Region	Dorothy	Moszynski	Environmental Resource Planner &	5775 Yonge Street	9th Floor	North York, ON M2M 4J1

Ministry of Natural Resources, Aurora District	Jackie	Burkart	District Planner, Aurora District	50 Bloomington Road West	R.R. #2	Aurora, ON L4G 3G8
Ministry of Natural Resources, Aurora District	Mark	Heaton	Fish and Wildlife Biologist	50 Bloomington Road West	R.R. #2	Aurora, ON L4G 3G8
Ministry of Agriculture & Environmental Land Use Policy	Susan	Motkaluk	Manager	1 Stone Road West	3rd Floor SE	Guelph, ON N1G 4Y2
Ministry of Agricultural, Food and Rural Affairs	Jackie	VandeValk	Rural Planner	Elora Resource Centre	6484 Wellington Rd. 7	Elora, ON N0B 1S0
Ministry of Tourism, Culture & Sport	Rosi	Zirger	Heritage Planner	401 Bay Street	Suite 1700	Toronto, ON M7A 0A7
Ministry of Municipal Affairs and Housing			Manager	777 Bay Street	13th Floor	Toronto, ON M5G 2E5
Ministry of Public Infrastructure and Renewal, Places to Grow	Tija	Dirks	Manager	777 Bay Street, North Tower	14th Floor	Toronto, ON M5G 2P5
Ministry of Transportation - Central Region, Engineering Office	Joseph	Lai	Section Head - Highway Engineering - Peel & Halton	1201 Wilson Avenue	4th Floor, Bldg D	Downsview, ON M3M 1J8
Ministry of Transportation - Central Region, Engineering Office	Lou	Politano	Manager	1201 Wilson Avenue	5th Floor, Bldg D	Downsview, ON M3M 1J8
Ministry of Transportation	Jonathan	Boone	Project Engineering Development	1201 Wilson Avenue	7th Floor, Atrium Tower	Downsview, ON M3M 1J8
Ministry of Transportation	Ted	Lagakos		1201 Wilson Avenue	4th Floor, Atrium Tower	Downsview, ON M3M 1J8
Hydro One Inc.	Tony	Ierullo	Manager	483 Bay Street, North Tower	14th Floor	Toronto, ON M5G

						2P5
Hydro One Networks	Les	Koch	Manager, Lines and ROW Programs	483 Bay Street, North Tower	15th Floor	Toronto, ON M5G 2P5
Hydro One Networks, Inc.	Charles S.	Esendal	Sustainment Manager, Tx Lines Info Systems & Programs	483 Bay Street,	TCT15-A11, North Tower	Toronto, ON M5G 2P5
GO Transit	Michael	Wolczyk	Manager Marketing and Planning	20 Bay Street	Suite 600	Toronto, ON M5J 2W3
GO Transit, Planning & Development	Dan	Francey	Manager, Transportation	20 Bay Street, Suite 600	Suite 600	Toronto, ON M5J 2W3
Ontario Provincial Police	Michael	Grodzinski	Operational Planning and	7750 Hurontario Street		Brampton, ON L6V 3W6
Ontario Provincial Police	Sheryl	Bennett	Senior Officer, Accommodation Services Section	777 Memorial Avenue,	1st Floor	Orillia, ON L3V 7V3
Town of Caledon	Allan	Thompson	Mayor	6311 Old Church Road		Caledon, ON L7C 1J6
Town of Caledon	Jeremy	Schembri	Energy & Environment Coordinator	6311 Old Church Road		Caledon, ON L7C 1J6
Town of Caledon	David	Loveridge	Public Works Director	6311 Old Church Road		Caledon, ON L7C 1J6
Town of Caledon	Mary	Hall	Director of Planning and Development	6311 Old Church Road		Caledon, ON L7C 1J6
Town of Caledon	Todd	Salter	Manager of Policy	6311 Old Church Road		Caledon, ON L7C 1J6

Town of Caledon	Geoff	Hebbert	Senior Development Engineering Co-ordinator	6311 Old Church Road		Caledon, ON L7C 1J6
Ministry of Aboriginal Affairs, Communications Branch	Lorena	Weesit	Correspondence Coordinator	160 Bloor Street East	4 <sup>th</sup> Floor	Toronto, ON M7A 2E6
Chiefs of Ontario				111 Peter Street	Suite 804	Toronto, ON M5V 2H1
Ministry of Aboriginal Affairs, Policy & Relationships Branch	Alan	Kary	Deputy Director	720 Bay Street	4th Floor	Toronto, ON M5G 2K1
Ministry of Aboriginal Affairs - Aboriginal & Ministry Relationships Branch	Ashley	Johnson	Advisor – Consultation Unit	160 Bloor Street East	9th Floor	Toronto ON M7A 2E6
Ministry of Aboriginal Affairs - Aboriginal & Ministry Relationships Branch	Francois	Lachance	Senior Policy Advisor	160 Bloor Street East	9th Floor	Toronto, ON M7A 2E6
Indian and Northern Affairs Canada - Environment Unit			Environmental Assessment	25 St. Clair Avenue East	8th Floor	Toronto, ON M4T 1M2
Credit River Metis Council	Ryan	McBride		56 Baccarat Crescent		Brampton, ON L7A 1K8
Anishinabek Nation/Union of Ontario Indians	Allan	Dokis	Director - Intergovernmental	Nippissing First Nation	PO Box 611	North Bay, ON P1B 8J8
Métis Nation of Ontario			Métis Consultation Unit	500 Old St. Patrick Street	Unit D	Ottawa, ON K1N 9G4
Association of Iroquois and Allied Indians	Rolanda	Elijah	Director of Intergovernmental	387 Princess Avenue		London, ON N6B 2A7
Six Nations Council	Kate	Cave	Land & Resources	2498 Chiefswood Road	P.O. Box 5000	Oshweken, ON N0A 1M0
Saugeen Ojibway Nation	Jake	Linklater	Case Manager	RR# 5		Warton, ON N0H 2T0
Chippewas of Georgina Island	Janice	Taylor	Contact Administrator	R.R. #2	P.O. Box N13	Sutton West, ON L0E 1R0
Hiawatha First Nation	Laurie	Carr		123 Paudash Street	R.R.#2	Keene, ON K0L 2G0

Mississaugas of Scugog Island	Tracy	Gauthier		22521 Island Road		Port Perry, Ontario L9L 1B6
Mississaugas of New Credit First Nation	M. Bryan	LaForme		8545 Townline Road	RR 1	Hagersville, Ontario N0A 1H0
Alderville First Nation	Denise	Graham	Band Administrator	11696 2nd Line Road	P.O. Box 46	Roseneath, ON K0K 2X0
Beausoleil First Nation	Roland	Monague		1 Ogema Street		Christian Island, ON L0K1C0
Chippewas of Mnjikaning First Nation (Rama)	Sharon	Stinson Henry		5884 Rama Road	Suite 200	Rama, ON L0K 1T0
Chippewas of Rama First Nation	Karry	Sandy- Mckenzie		8 Creswick Court		Barrie, ON L4M 1H2
Curve Lake First Nation						
Mississaugas of Scugog Island First Nation	Kathy	Brant	Contact Administrator	R.R. #5	22521 Island Road	Port Perry, ON L9L 1B6
Enbridge Gas Distribution Inc.	Carmelo	Tancioco	Manager of Special Projects	P.O. Box 650	Station A	Scarborough, ON M1K 5E3
Enbridge Gas Distribution Inc.	Russ	McLean	Manager, GIS and Records Administration	Planning Department	500 Consumers Road	North York, ON M2J 1P8
Enbridge Gas Distribution Inc.	Kerry	Dick	Construction and Maintenance Department	6 Colony Court		Brampton, ON L6T 4E4
Enbridge Gas Distribution Inc., Records Department			Markup Department	Post A2	P.O. Box 650	Scarborough, ON M1K 5E3
Hydro One Telecom	Ian	Mitchell		65 Kelfield Street		Rexdale, ON M9W 5A3
Trans Canada Pipeline	Darlene	Presley	Lehman and Associates Planning Consultant	97 Collier Street		Barrie, ON L4M 1H2
Trans-Northern Pipelines Inc			Coordinator - Crossings and Facilities	45 Vogell Road	Suite 310	Richmond Hill, ON L4B 3P6



MTS – Allstream	Cory	Knight		50 Worcester Road		Etobicoke, ON M9M 5X2
Canadian Pacific Railway	Andre	Lapalme		Suite 400, Windsor Station	P.O. Box 6042	Centre Ville, Montréal, QC H3C
Canadian Pacific Railway	S.	Soper		2025 McCowan Road		Scarborough, ON M1F 4A8
BLINK Communications Inc.	Julie	Pomeroy	General Manager	5240 Mavis Road		Mississauga, ON L5C 1T8
Telus Communications	Anthony	Segreto	Access Planning Manager, Telus Central Region	2700 Matheson Blvd. E.	5th Floor, West Tower	Mississauga, ON L4W 4V9
Rogers Communications	Marian	Wright	Planning Coordinator	3573 Wolfedale Road		Mississauga, ON L5C 3T6
Rogers Cable System Inc.	Edgar	Henriquez	Markup Coordinator, GTAW, OPE-GTA	3573 Wolfedale Road		Mississauga, ON L5C 3T6
Bell Canada	Wendy	Lefebvre	Design Manager – Access Network	5115 Creekbank Road West	FL3	Mississauga, ON L4W 5R1
Bell Canada	Lynn	Chaput	Municipal Operations Centre	100 Borough Drive,	Floor 5 Blue	Scarborough, ON M1P 4W2
Bell Canada	Janice	Young	Manager – Right-of- Way	100 Borough Drive,	Floor 3 Green	Scarborough, ON M1P 4W2
Bell Canada	Scott	Moon	Implementation Department	5115 Creekbank Road	3rd Floor, West Tower	Mississauga, ON L4W 5R1
Bell Canada, Municipal Operations Centre	Elaine	Oakley	c/o Plantec Consulting Engineers	200 Town Centre Boulevard	Suite 300	Markham, ON L3R 8G5
Toronto Region Conservation Authority	Sharon	Lingertat	Planner	5 Shoreham Drive		Downsview, ON M3N 1S4
Peel District School Board	Paul	Mountford	Intermediate Planner Officer	HJA Brown Education Centre, Planning and Accommodation Dept	5650 Hurontario Street	Mississauga, ON L5R 1C6
Dufferin-Peel Catholic District School Board	Thane	Munn	Manager of Planning	40 Matheson Blvd. West		Mississauga, ON L5R 1C5

Peel Regional Police	Jennifer	Evans	c/o Sargeant Dale Waller	7750 Hurontario Street		Brampton, ON L6V 3W6
Peel Regional Police, Corporate Planning & Resources	Mike	Grodzinski	Operational Planning &	7750 Hurontario Street		Brampton, ON L6V 3W6
Peel Fire and Emergency Services	Garry	Morden	Fire Chief	15 Fairview Road West		Mississauga, ON L5B 1K7
Region of Peel Ambulance Services	Peter	Dundas	Director	5299 Maingate Drive		Mississauga, ON L4W 1G6
Town of Caledon Fire Department	Dave	Forfar	Fire & Emergency Services	6097 Old Church Road		Caledon East, ON L7C 1G6