

Mississauga Road, Olde Base Line Road, Winston Churchill Boulevard,
Bush Street, and Old Main Street

PUBLIC OPEN HOUSE

Tuesday, October 30, 2012



Meeting Purpose

To have a conversation with the residents about:

- transportation issues and needs,
- transportation vision for the corridors,
- context sensitive design, and
- Community Working Group participation.



What improvements are being considered?

This study will be considering improvements to address:

- Pavement and road base condition
- Drainage
- Safety (including sight lines)
- Active transportation (pedestrians and bikes)
- Intersection control

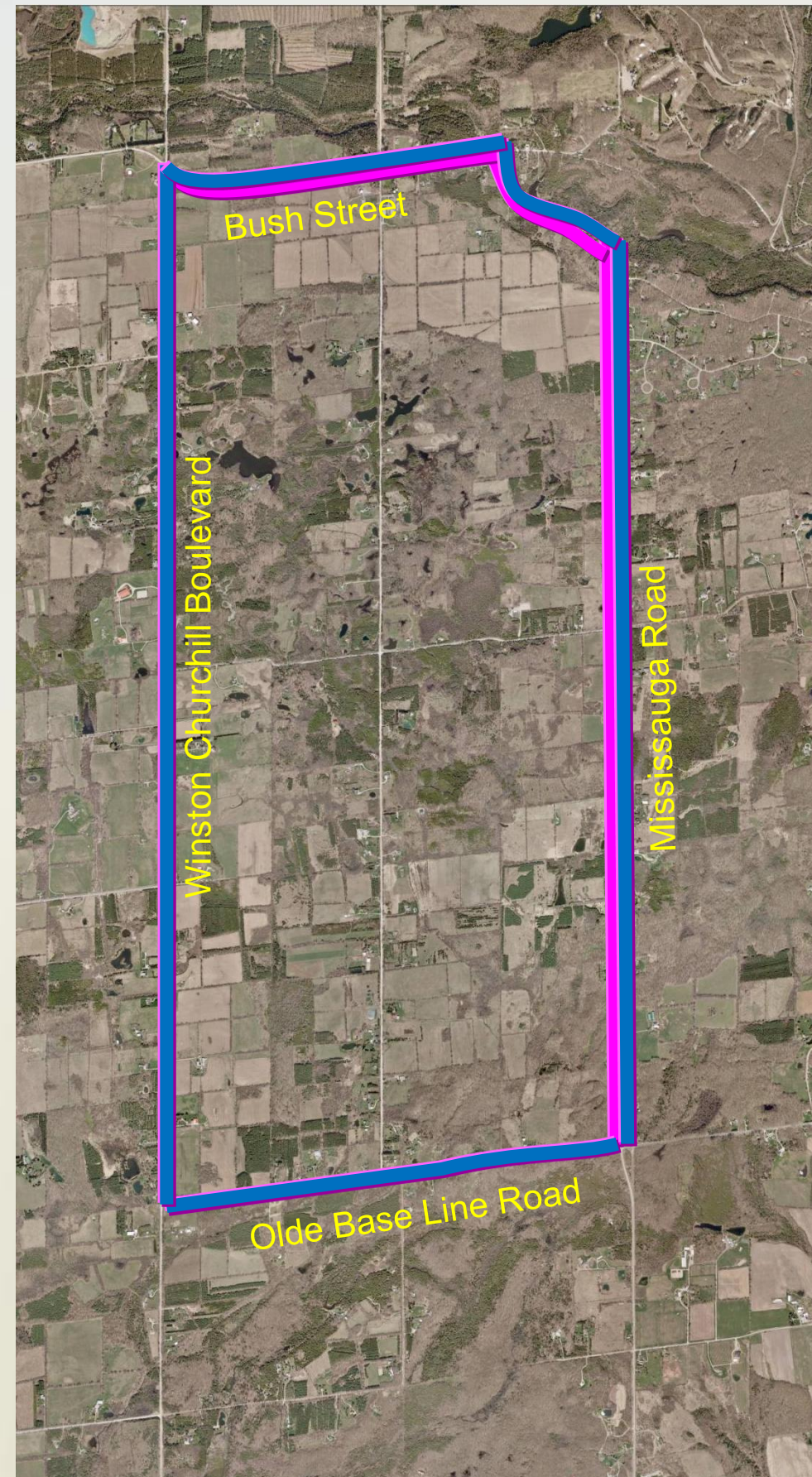


This project is not considering:

- Widening (no need for additional travel lanes)

History

- Study undertaken 1992-1998
- Study put on hold due to Rockfort Quarry application
- 2009 – new study commenced for Mississauga Road and Bush Street
- Schedule “C” Environmental Assessment
- 2010/2011 Ontario Municipal Board denied Quarry application
- Study area expanded to include Winston Churchill Boulevard and Old Base Line Road for a comprehensive transportation network review



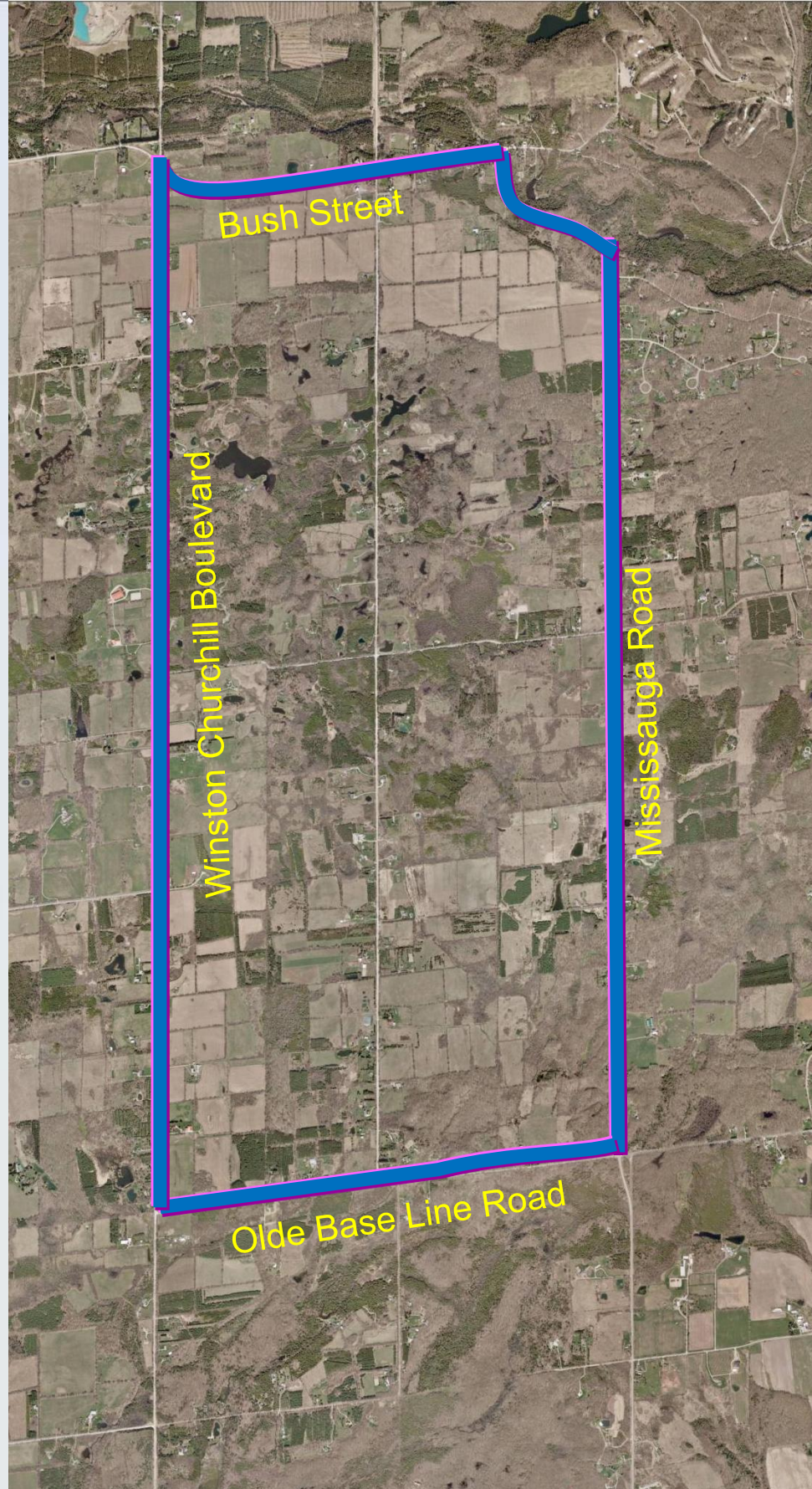
What We Heard

- Public Information Centre Held April 2010
- Focus Group Meeting Held June 2010



- If the roads were improved, it would attract more traffic through the village
- Study area should be expanded to include the broader network

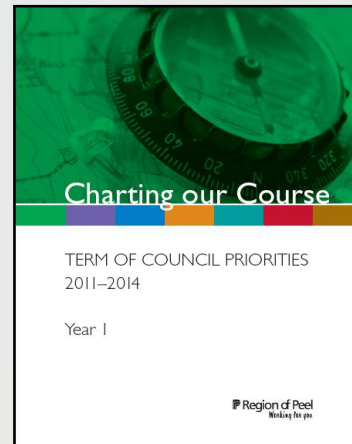
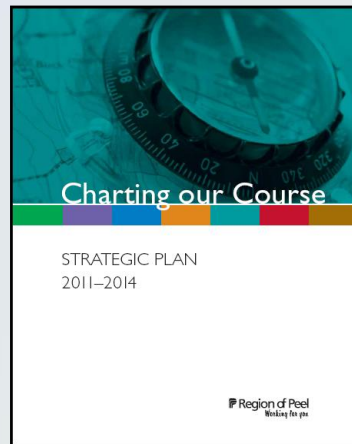
Where We Are Today



- Study area expanded to include Winston Churchill Boulevard and Olde Base Line Road
- Notice of Study Limits Expansion July 2012
- Project Bulletin July 2012
- Request for CWG Letters of Interest July 2012 (additional outreach in September 2012)
- CWG Meeting #1 October 23, 2012

Study Vision

Improvements through Context Sensitive planning and design will enhance experience for all users and reflect the character of the community.



Study Goals

- Community and Stakeholder engagement
- Opportunities for active transportation
- Increase safety for all users
- Improve asset condition
- Improve natural environmental condition



Context Sensitive Design

Context Sensitive Design (CSD) is the art of creating public works projects that meet the needs of the users, the neighboring communities and the environment.



1. Community members will play an important role in identifying problems and solutions that may better meet and balance the needs of all stakeholders.
2. The project will consider the feedback from the community on key design issues (e.g. rural versus urban cross-section, roundabouts versus stop-controlled intersections, paved sidewalk versus gravel shoulder, etc.).

What is the Community Working Group?

- A forum for focused discussion
- Broad group of interested stakeholders representative of the community
- The community working group (CWG) is a non-voting liaison group that makes recommendations to the project team for their consideration.



The CWG currently has six members:

1. Resident from Olde Base Line Road
2. Resident from Mississauga Road
3. Resident from Winston Churchill Boulevard (Wellington County side)
4. Property owner from Mississauga Road (historical schoolhouse)
5. Member of the Belfountain Community Organization board of directors
6. Belfountain Public School Teacher

How can I join the CWG?

- If you are interested in participating in the Community Working Group, please submit a letter or an email summarizing:
 - who you represent, and
 - information about yourself.
- Please note that CWG membership will be limited to 15 representatives.



- Please submit your one-page letter of interest to either of the following:

Hitesh Topiwala
Peel Region Project Manager
Transportation Division | Public Works
10 Peel Centre Dr, Suite B, 4th Floor
Brampton, ON L6T 4B9
Hitesh.Topiwala@peelregion.ca
Ph. (905) 791-7800 ext. 7805

Stephen Keen
HDR Project Manager
231 Shearson Cres, Suite 206
Cambridge, ON N1T 1J5
Stephen.Keen@hdrinc.com
Ph. (519) 621-7886 ext. 5951

Next Steps

Transportation and Traffic studies

Technical Studies

Define Problem/ Opportunity

Develop/Evaluate Alternative Solutions

Technical Advisory Committee meeting

Community Working Group meeting

PIC #1

