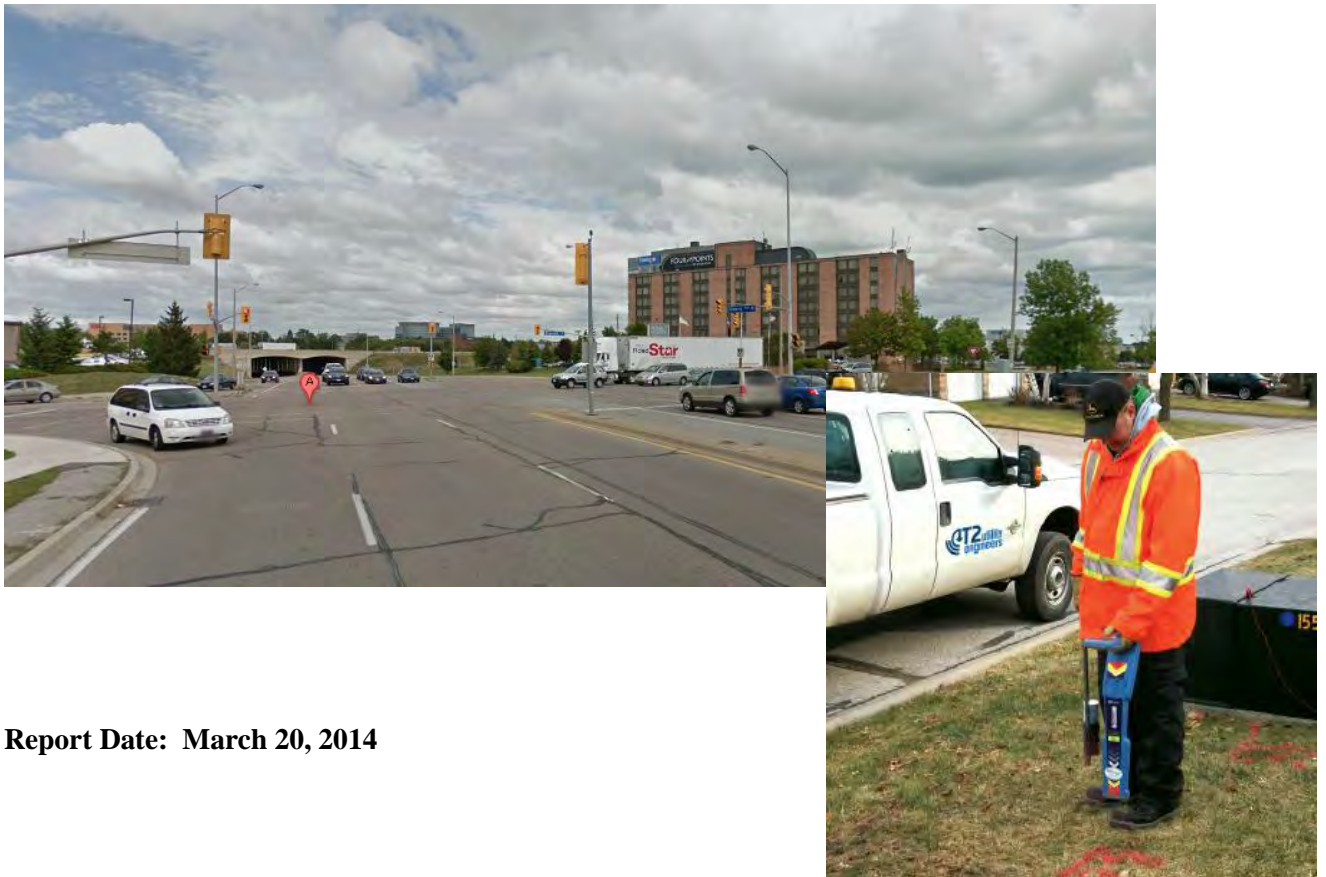


HDR Corporation

Derry Road West & Argentia Road

Report Subsurface Utility Engineering Services

Project #61000235



Report Date: March 20, 2014



Statement of Qualifications and Limitations

The attached Report (the “Report”) has been prepared by T2 Utility Engineers Inc. (“Consultant”) for the benefit of the HDR Corporation (“Client”) in accordance with the agreement between Consultant and Client, including the scope of work detailed therein (the “Agreement”).

The information, data, recommendations and conclusions contained in the Report (collectively, the “Information”):

is subject to the scope, schedule, and other constraints and limitations in the Agreement and the qualifications contained in the Report (the “Limitations”), represents Consultant’s professional judgement in light of the Limitations and industry standards for the preparation of similar reports, may be based on information provided to Consultant which has not been independently verified, has not been updated since the date of issuance of the Report and its accuracy is limited to the time period and circumstances in which it was collected, processed, made or issued, must be read as a whole and sections thereof should not be read out of such context, was prepared for the specific purposes described in the Report and the Agreement, in the case of subsurface conditions, may be based on limited inspections and on the assumption that such conditions are uniform and not variable either geographically or over time.

Consultant shall be entitled to rely upon the accuracy and completeness of information that was provided to it and has no obligation to update such information. Consultant accepts no responsibility for any events or circumstances that may have occurred since the date on which the Report was prepared and, in the case of subsurface conditions, is not responsible for any variability in such conditions, geographically or over time.

Consultant agrees that the Report represents its professional judgement as described above and that the Information has been prepared for the specific purpose and use described in the Report and the Agreement, but Consultant makes no other representations, or any guarantees or warranties whatsoever, whether express or implied, with respect to the Report, the Information or any part thereof.

The Report is to be treated as confidential and may not be used or relied upon by third parties, except:
as agreed in writing by Consultant and Client,
as required by law,
for use by governmental reviewing agencies.

Consultant accepts no responsibility, and denies any liability whatsoever, to parties other than Client who may obtain access to the Report or the Information for any injury, loss or damage suffered by such parties arising from their use of, reliance upon, or decisions or actions based on the Report or any of the Information (“improper use of the Report”), except to the extent those parties have obtained the prior written consent of Consultant to use and rely upon the Report and the Information. Any damages arising from improper use of the Report or parts thereof shall be borne by the party making such use.

This Statement of Qualifications and Limitations is attached to and forms part of the Report and any use of the Report is subject to the terms hereof.

Report Revision Log

Revision #	Revised By	Date	Issue / Revision Description

Report Prepared By:

Matt Bourgeois, C. Tech
Branch Manager / Sr. Project Manager

Table of Contents:

Statement of Qualifications and Limitations

Report Revision Log

	Page
1. Project Summary.....	1
1.1 Project Area.....	1
2. Equipment.....	1
2.1 Electromagnetic Designating Equipment.....	1
2.2 Survey Technologies.....	2
3. SUE Investigation Methodology.....	2
3.1 CI/ASCE Standard 38-02 Summary:.....	2
3.2 SUE Investigation Scope of Work.....	2
4. Field Investigation.....	3
5. Utility Circulation Request.....	4
6. Conclusion.....	4

Appendices

Appendix A – Composite Utility Drawing

Appendix B – Utility Circulation Contact List

1. Project Summary

T2 Utility Engineers (T2ue) completed a Subsurface Utility Engineering (SUE) mapping investigation in accordance with CI/ASCE 38-02, for HDR Corporation as part a study for Derry Road and Argentia Road. The project involves Record request Circulation and SUE Mapping within the investigation area. HDR's project includes a Schedule 'B' Class Environmental Assessment, intersection design and road improvements. HDR has requested the SUE investigation in order to determine the horizontal alignment of underground utilities.

1.1 Project Area

The Project Area is a 4-way intersection of Derry Road West and Argentia Road in Mississauga Ontario. The intersection is controlled/signal in all directions. Derry Road West is a major arterial road running north-south extending from Milborough Line through the project area and ending at Hwy 427. Argentia Road is a collector road running east-west extending from Tenth Line West through the project area ending at creditview Road. Derry Road West is a 6-lane road with center median, left turn lanes and right turn lanes with islands. Argentia Road is a 2-lane road to the west and a 3-lane road to the east with left and right turn lanes. The project area is largely a commercial area with grass and concrete sidewalks in the boulevards.

According to the record documents obtained and field investigations the project area contains numerous underground utilities. Utilities confirmed within the investigation area include water, sewer, gas, Hydro and Telecommunications. Watermains within the area include Municipal owned 300mm PVC, 300mm DI, 400mm CPP, 600mm CPP and 750mm CCP. The Municipal owned sanitary and storm sewers are throughout the investigation area and range from small lateral connections to large box culverts. Enbridge gas distribution has a 750mm steel coated extra high pressure vital main running along the east side of Derry Road throughout the project area. Enbridge also has a 100mm polyethylene intermediate pressure distribution main running along the south side of Argentia Road throughout the project area. Underground hydro includes plant from single conduit street lighting to concrete encased structures. Telecommunications extensive throughout the project area owned by Bell, Rogers, Allstream, Cogeco, Toronto Hydro and Enersource.

2. Equipment

The following paragraphs represent a description of some of the common equipment used by T2ue to complete the investigation. T2ue uses the latest equipment and techniques available to designate all varieties of subsurface utilities and underground structures. We have assessed the merits of every technology outlined in the ASCE Standard 38-02 and CSA S250-11 for use in utility designating. Field Technicians utilize each technology according to the manufacturer's instructions and the project conditions. Based on the project scope and discussions with HDR, T2ue has selected the appropriate equipment to ensure that our field technicians are trained and equipped with the latest information, techniques and technology.

2.1 Electromagnetic Designating Equipment

T2ue primarily uses single frequency and multi-frequency electromagnetic designating equipment. Electromagnetic designating equipment does not locate the actual pipes or cables, but instead locate the magnetic fields. Electromagnetic fields are either naturally present on

conductors or are induced onto a target line by a transmitter. Signals may be distorted by any of the following:

- ground conductivity
- construction layout (i.e. bends, connections)
- utility congestion causing bleed off of magnetic fields
- materials and/or age (i.e. PVC without tracer wire, corrosion in metallic pipes)

2.2 Survey Technologies

Both total station and survey grade GPS equipment is used to collect the data from the SUE Mapping investigation and tie in the results to local features and points that are obtained from the topographical base map.

3. SUE Investigation Methodology

T2 Utility Engineers Inc. performs SUE mapping investigations in accordance with the CI/ASCE Standard 38-02: Standard Guideline for the Collection and Depiction of Existing Subsurface Utility.

3.1 CI/ASCE Standard 38-02 Summary:

All utility information is assigned a quality level in accordance with the CI/ASCE Standard 38-02:

Quality Level D (QL-D) – Information derived from existing utility records, or verbal recollections.

Quality Level C (QL-C) – Information obtained by surveying and plotting visible above-ground utility features and by using professional judgment in correlating this information to Quality Level D information.

Quality Level B (QL-B) – Information obtained through the application of appropriate surface geophysical methods to determine the existence and approximate horizontal position of subsurface utilities.

Quality Level A (QL-A) – Precise horizontal and vertical location of utilities obtained by the actual exposure (or verification of previously exposed and surveyed utilities) and subsequent measurement of subsurface utilities at a specific point.

3.2 SUE Investigation Scope of Work

The following is a breakdown of the methodology used for the SUE investigation:

- Records research completed by T2ue includes the review of record documents obtained through the utility circulation request (see Appendix B), information received from HDR and gathered records information to utilize for the investigation.
- HDR provided T2ue with a base map for the area that is tied into proper coordinate systems (horizontal and vertical survey control points within the project area) including:
 - Surface topographical features: curbs, asphalt, buildings, utility poles, signs, CB's, MH's, etc.

- Utilized the topographic survey information provided to verify the position of surface features such as valves and pedestals that indicate the location of underground utilities.
- Utilized geophysical utility designating techniques to determine the horizontal position of utilities identified within the project limits. Utilities investigated included water, gas, hydro and telecommunications. The investigation also included induction scanning in key areas to help identify utilities that were not identified on the record drawings. Equipment used included single frequency and multi-frequency electromagnetic designating equipment. This process identified an undocumented utility crossing Argentia towards the east limit of the project area. If collecting additional information is required a test hole should be completed to investigate further.
- All designating marks were surveyed in order to generate the utility composite plan.
- T2ue produced a composite utility drawing based on the field findings and the records research (Quality Level D, C and B as per ASCE 38-02 – SUE guidelines).

4. Field Investigation

The field investigation was completed in November 2013 within the limits described below. The initial field investigation for the SUE Mapping was completed and the preliminary drawings were submitted to HDR for review. After comments were provided final drawings we're provided to HDR.

The limits of investigation

- Full right of way, 300m in each direction from the center of the intersection of Derry Road and Argentia Road.



5. Utility Circulation Request

T2ue completed the utility circulation request on August 29, 2014. Record documents have been provided by the utility companies for the project area. A summary of the Utility Circulation Request completed by T2ue is attached in Appendix B.

6. Conclusion

The SUE investigation for this project provided key information regarding the location of the existing underground utilities to be used during the design. A combination of data from the field investigations and utility record information was used to create the composite utility drawings. The drawings show the utilities at the given quality levels as outlined in the CI/ASCE Standard 38-02. The investigation focused on determining the utility infrastructure that would be impacted, and as such the highest quality level of information is provided in those key areas, as requested by HDR.

The data currently shown on the drawing should provide the designers adequate information to move forward with the design. During detailed design additional test holes or additional investigations may be required to further define any new areas that may be considered if revisions are made.

APPENDIX A
COMPOSITE UTILITY DRAWING
(Separate from report)

APPENDIX B
UTILITY CIRCULATION CONTACT LIST

Utility Contact Sheet:

Project Name: Derry & Argentia
 Project Number: 61000235
 Client: HDR



Completed by: N.F.
 Checked by: M.B.
 Updated (dd/mm/yy): 19-Mar-14

Job Limits:

Utility	Email Address	Contact Name	Contact Information	Info Requested (DD/MM/YY)	Info Received (DD/MM/YY)	MATERIAL RECEIVED	Notes
Bell Canada	bell.moc@prestigetel.com	Elaine Oakley (Toronto) Chris Gill (Hamilton)	100 Borough Drive, Floor F5 Toronto, ON M1P 4W2 tel: 416-296-6587	29-Aug-13	07-Oct-13	MU 41167.dwg	
Cogeco Data Services Inc.	Samir.patel@cogecodata.com	Samir Patel Utility Mark-ups Network Implementation (Primary)	P 416-840-8755 F 416-626-7774	29-Aug-13	12-Sep-13	Argentia - Derry W and Mississauga - As-Built_CDS.dwg Derry - Millcreek and Argentia - As-Built_CDS.dwg	
Cogeco Cable	lynnane.cane@cogeco.com	Lynanne Cane	P.O. Box 5076 Stn. Main Burlington, Ontario L7R 4S6 Tel: 905-548-8002	29-Aug-13	12-Sep-13		
Enbridge Gas Distribution	mark-ups@enbridge.com	Joe Marozzo	500 Consumers Road 4th Floor - Post A2 - VPC North York, ON M2J 1P8 tel: (416) 758-7956 fax:(416) 758-4374	29-Aug-13	13-Sep-13	DERRY-ARGENTIA_EG_NOTES.pdf	
Enersource Hydro Mississauga	mscafe@enersource.com	Rose Sawczynszyn	3240 Mavis Road Mississauga, ON L5C 3K1 Tel: 905-283-4160 Fax: 905-566-2712	29-Aug-13	11-Sep-13	EHM ARea Map - Derry and Argentia intersection.pdf EHM dwgs - Derry and Argentia intersection.pdf	
Group Telecom	pucc.circulations.gt@bell.ca	Tannis Raymond	tel: 416-848-2267	29-Aug-13	9-25-13		No Conflict, Not in study area.
Hydro One	tpumarkup@hydroone.com	Mark Hamilton	49 Sarjeant Dr. Barrie, ON L4N 4V9 tel: 705-792-3111 P-705-797-4142* fax: 705-792-3116 F-705-797-4199*	29-Aug-13	04-Sep-13		No Conflict, Not in study area.
Hydro One Telecom Inc.	hotosp@hydroone.com	Barbara Mahon OSP Engineering Dept.	65 Kelfield Street Rexdale, Ontario F-416-540-6790 P-416-240-6842or416-240-3751	29-Aug-13	29-Aug-13		No Conflict, Not in study area.

Utility Contact Sheet:

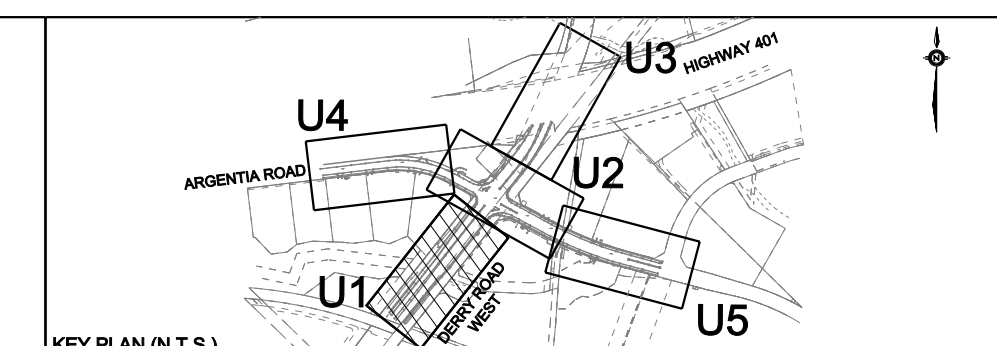
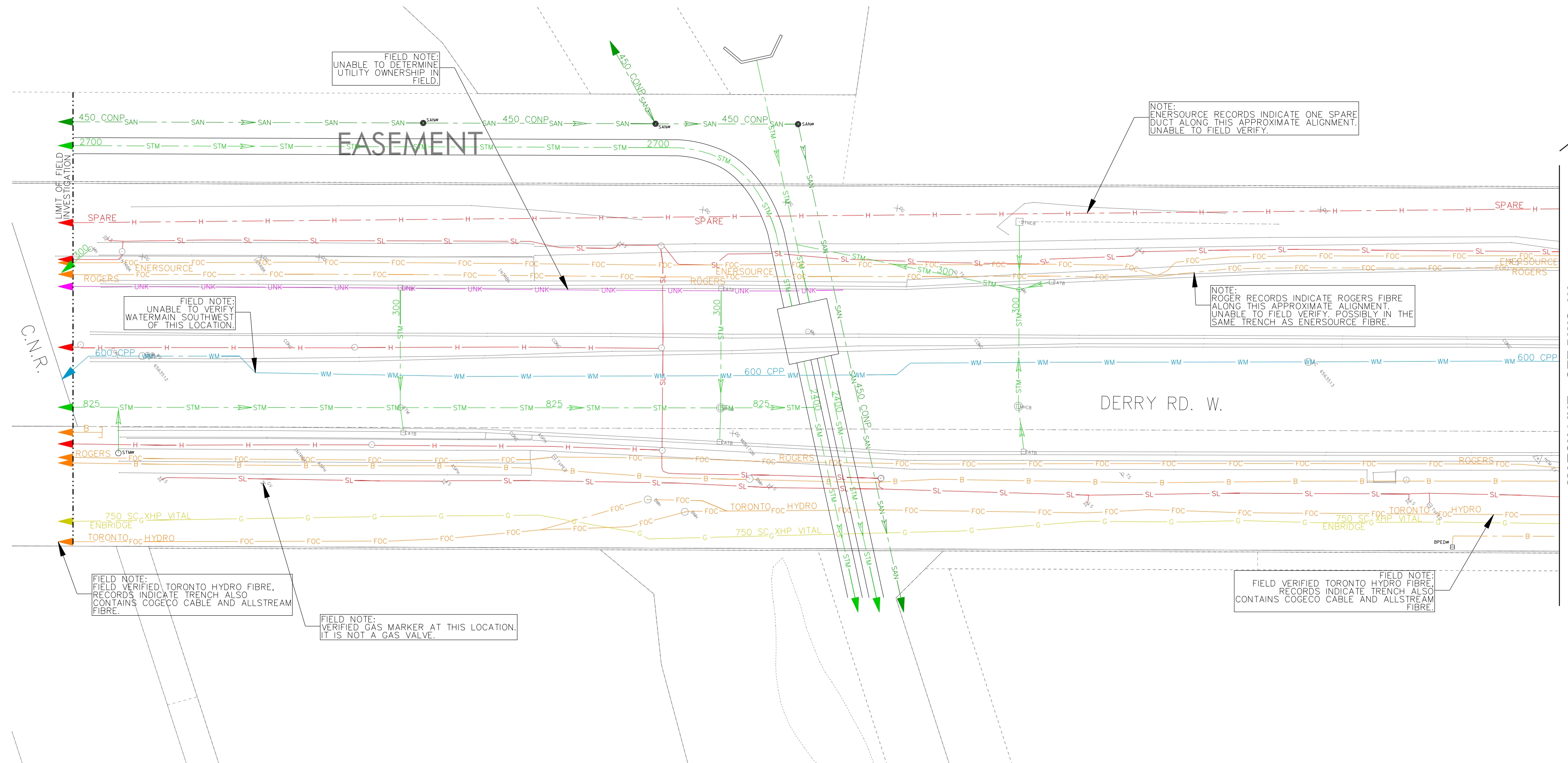
Project Name: Derry & Argentia
 Project Number: 61000235
 Client: HDR



Completed by: N.F.
 Checked by: M.B.
 Updated (dd/mm/yy): 19-Mar-14

Job Limits:

Utility	Email Address	Contact Name	Contact Information	Info Requested (DD/MM/YY)	Info Received (DD/MM/YY)	MATERIAL RECEIVED	Notes
Level 3 Communications	level3.networkrelocations@level3.com	PJ Foley	Level (3) Communications, LLC 1025 Eldorado Blvd., 33A-615 Broomfield, CO 80021 P: (720) 888-6507 F: (720) 567-2780 E: Foley.PJ@Level3.com	29-Aug-13	04-Sep-13	Screen Shot.pdf TORBUF-01_103.pdf TORBUF-01_104.pdf TORBUF-01_105.pdf TORBUF-01_106.pdf	No Conflict, Not in study area.
MTS Allstream	Utility.Circulations@mtsallstream.com	Corey Knight	50 Worcester Rd Etobicoke, ON M9W 5X2 tel: 416-649-7509	29-Aug-13	03-Sep-13	61000235-AllstreamMarkup.pdf	
PSN Fiber Network (Peel Fiber)	scott.rea@peelregion.ca	Scott Rea	905-8406300 ext 4602	29-Aug-13	29-Aug-13		No Conflict, Not in study area.
Rogers Cable Communications Inc.	GTA.Markups@rci.rogers.com	Manel De Silva	Markup Coordinator, OPE GTAC Tel: 416 446-6794	29-Aug-13	06-Sep-13	M133507_61000235.pdf M133507_Derry-Argentia.pdf	
Telus	telusutilitymarkups@plantec.com Telusutilitymarkups@prestigetel.com	Stephen Hoy	2696 Matheson Blvd. E, 1st Floor, West Tower, Mississauga, ON L4W 4V5 tel: 905-804-6219 p-416-883-6636* C-416-992-0617	29-Aug-13	05-Sep-13		No Conflict, Not in study area.
Region of Peel				29-Aug-13		07880_D.pdf 36827_D.pdf 36826_D.pdf 36828_D.pdf 36829_D.pdf C16489.pdf 07881_D.pdf 09821_D.pdf 09822_D.pdf 08477_D.pdf	
TransCanada Pipelines	darlene@lehmanplan.ca	Darlene Presley	TransCanada PipeLines Limited C/O Lehman & Associates 97 Collier Street, Barrie, ON L4M 1H2 Phone: 1-866-602-0663 Direct: 705-627-2302 Fax: 705-727-9217	29-Aug-13	17-Sep-13		No Conflict, Not in study area.



REVISIONS		
DATE	DETAILS	INIT.

LEGEND	
—G—	GAS
—GS—	GAS SERVICE
—W—	WATER
—WS—	WATER SERVICE
—SAN—	SANITARY SEWER
—SANL—	SANITARY LATERAL
—STM—	STORM SEWER
—STM—	STORM LATERAL
—H—	BURIED ELECTRIC
—SL—	BURIED ELECTRIC STREET LIGHT
—TL—	BURIED ELECTRIC TRAFFIC LIGHT
—UNK—	UNKNOWN
—FOC—	FIBRE OPTIC CABLE
—TV—	CABLE TV
—B—	BURIED TELECOMMUNICATIONS
—xxx—	QUALITY LEVEL "B"
—xxx—	QUALITY LEVEL "C"
—xxx—	QUALITY LEVEL "D"
—OH—	OVERHEAD HYDRO
⊙	TEST HOLE (DL-A)
•	NOT SURVEYED, LOCATION BASED ON FIELD OBSERVATION
#	NOT SURVEYED, LOCATION BASED ON RECORD INFORMATION
ABD	ABANDONED
→	FLOW ARROW

ASCE QUALITY LEVELS

THE UTILITY INFORMATION SHOWN ON THIS DRAWING WAS COLLECTED IN ACCORDANCE TO ASCE STANDARD 38-02. THE INFORMATION IS SHOWN BY QUALITY LEVEL WHICH INDICATES THE LEVEL OF EFFORT USED TO DETERMINE THE LOCATION OF THE DATA

I QUALITY LEVEL "D" — INFORMATION DERIVED FROM EXISTING RECORDS OR VERBAL RECOLLECTIONS.

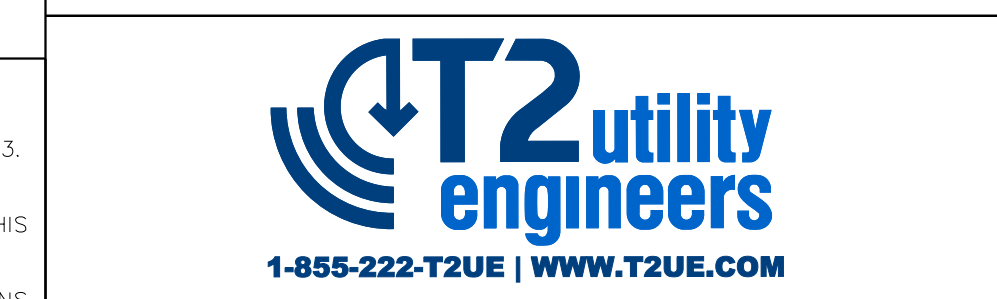
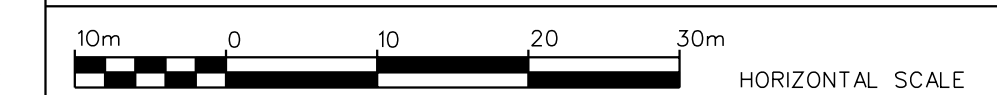
N C QUALITY LEVEL "C" — INFORMATION OBTAINED BY SURVEYING AND PLOTTING VISIBLE ABOVE GROUND UTILITY FEATURES AND BY USING PROFESSIONAL JUDGEMENT IN CORRELATING THIS INFORMATION TO THE QUALITY LEVEL "D" INFORMATION.

D QUALITY LEVEL "B" — INFORMATION OBTAINED THROUGH THE APPLICATION OF APPROPRIATE SURFACE GEOPHYSICAL METHODS TO DETERMINE THE EXISTENCE AND APPROXIMATE HORIZONTAL POSITION OF THE UTILITIES.

U A L QUALITY LEVEL "A" — PRECISE HORIZONTAL AND VERTICAL LOCATION OF UTILITIES OBTAINED BY THE ACTUAL EXPOSURE AND SUBSEQUENT MEASUREMENT OF SUBSURFACE UTILITIES.

THE ENGINEER'S SEAL HEREON IS TO CERTIFY THAT THE UTILITIES SHOWN HAVE BEEN INVESTIGATED IN ACCORDANCE WITH STANDARD SUE INDUSTRY PRACTICES. ALL OTHER INFORMATION HEREON HAS BEEN PROVIDED BY OTHERS AND IS NOT A PART OF THIS CERTIFICATION.

DISCLAIMER:
THIS DRAWING HAS BEEN PREPARED FOR THE USE OF T2UE'S CLIENT AND MAY NOT BE USED, REPRODUCED OR RELIED UPON BY THIRD PARTIES, EXCEPT AS AGREED BY T2UE AND ITS CLIENT, AS REQUIRED BY LAW OR FOR USE BY GOVERNMENT REVIEWING AGENCIES. T2UE ACCEPTS NO RESPONSIBILITY, AND DENIES ANY LIABILITY WHATSOEVER, TO ANY PARTY THAT MODIFIES THIS DRAWING WITHOUT T2UE'S EXPRESS WRITTEN CONSENT.



CLIENT:

Region of Peel
Working for you

DERRY-ARGENTIA INTERSECTION IMPROVEMENTS
DERRY ROAD WEST
(DERRY ROAD & ARGENTIA ROAD INTERSECTION)
SUBSURFACE UTILITY ENGINEERING INVESTIGATION

CAD Area	Area	Project No.	61000235
Checked by M.B.	Drawn by N.F.		
Date OCTOBER 2013	Sheet 1 of 5	Plan No.	U1

PRELIMINARY

- GENERAL NOTES**
1. T2 UTILITY ENGINEERS (T2UE) SUE FIELD INVESTIGATION WAS COMPLETED IN SEPTEMBER 2013. CHANGES TO UTILITIES THAT OCCURRED FOLLOWING OUR INVESTIGATION MAY NOT BE SHOWN. CONSIDERATION SHOULD BE GIVEN TO UPDATING THIS PLAN PRIOR TO FINAL DESIGN AND CONSTRUCTION.
 2. LIMIT OF INVESTIGATION: 300m IN ALL DIRECTIONS FROM CENTERLINE OF DERRY ROAD AND ARGENTIA ROAD INTERSECTION.
 3. FIELD VERIFICATION OF UTILITIES WAS COMPLETED USING A COMBINATION OF ELECTROMAGNETIC PIPE AND CABLE LOCATE EQUIPMENT.
 4. EMPTY CONDUITS, SERVICES, STREETLIGHTING CABLES, LATERALS TO BUILDINGS, ABANDONED FACILITIES, WITHIN THE INVESTIGATION AREA MAY NOT BE SHOWN ON THE DRAWING.
 5. T2UE USED AVAILABLE MEANS IN AN ATTEMPT TO DETERMINE THE LOCATION OF UNDOCUMENTED UTILITIES HOWEVER CANNOT BE RESPONSIBLE FOR FINDING ALL UNDOCUMENTED UTILITIES.
 6. SURVEY OF T2UE'S UNDERGROUND UTILITY INFORMATION WAS COMPLETED BY ACL.
 7. THE BASEPLAN WAS PROVIDED BY THE CLIENT, THEREFORE T2UE IS NOT RESPONSIBLE FOR ITS ACCURACY.
 8. UTILITY MATERIALS AND SIZES SHOWN ON DRAWING ARE BASED ON RECORDS INFORMATION RECEIVED, PROFESSIONAL JUDGEMENT, OR FIELD OBSERVATIONS.
 9. UTILITY OWNERSHIP SHOWN ON DRAWING IS BASED ON RECORDS INFORMATION RECEIVED, PROFESSIONAL JUDGEMENT, OR FIELD OBSERVATIONS.
 10. SEE PROJECT REPORT FOR ADDITIONAL INFORMATION.

FIELD NOTE:
UNABLE TO DETERMINE UTILITY OWNERSHIP IN FIELD.

NOTE:
ENERSOURCE RECORDS INDICATE ONE SPARE DUCT ALONG THIS APPROXIMATE ALIGNMENT. UNABLE TO FIELD VERIFY.

FIELD NOTE:
UNABLE TO VERIFY WATERMAIN SOUTHWEST OF THIS LOCATION.

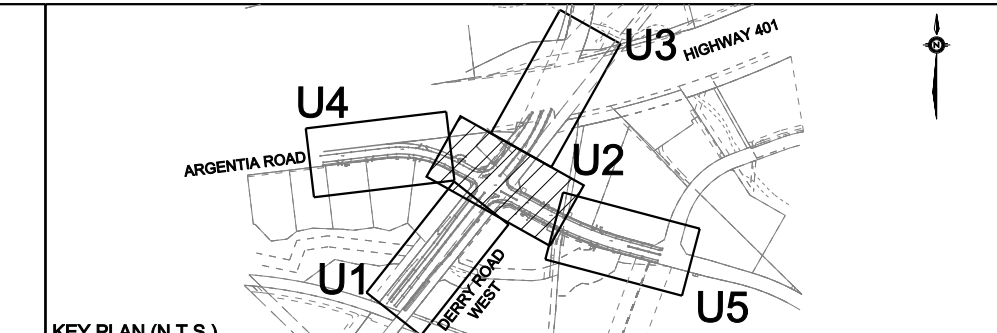
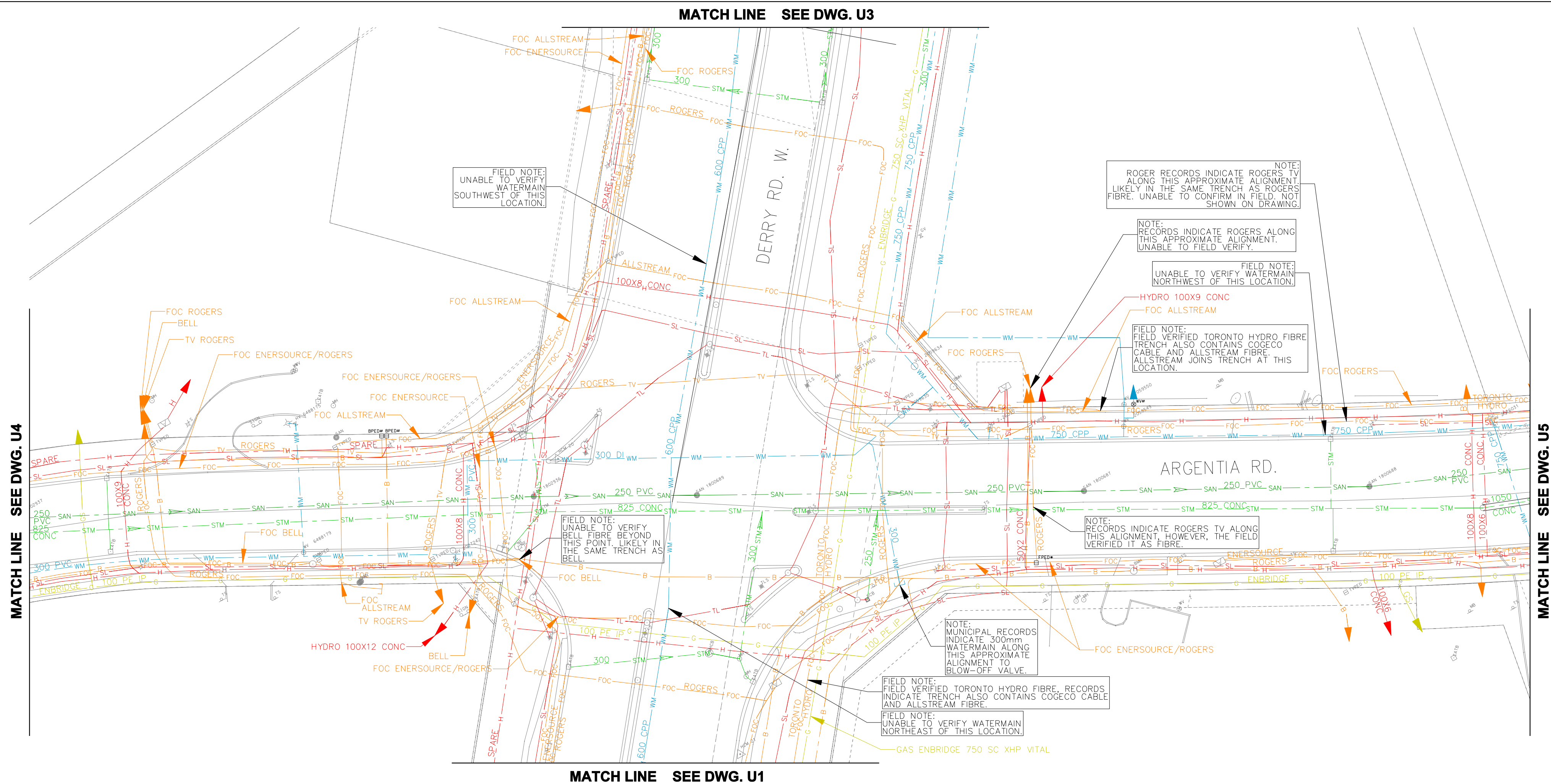
NOTE:
ROGERS RECORDS INDICATE ROGERS FIBRE ALONG THIS APPROXIMATE ALIGNMENT. UNABLE TO FIELD VERIFY POSSIBLY IN THE SAME TRENCH AS ENERSOURCE FIBRE.

FIELD NOTE:
FIELD VERIFIED TORONTO HYDRO FIBRE. RECORDS INDICATE TRENCH ALSO CONTAINS COGECO CABLE AND ALLSTREAM FIBRE.

FIELD NOTE:
VERIFIED GAS MARKER AT THIS LOCATION. IT IS NOT A GAS VALVE.

FIELD NOTE:
FIELD VERIFIED TORONTO HYDRO FIBRE. RECORDS INDICATE TRENCH ALSO CONTAINS COGECO CABLE AND ALLSTREAM FIBRE.

MATCH LINE SEE DWG. U2



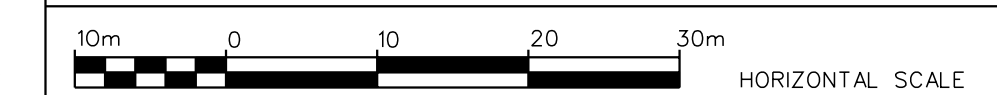
REVISIONS		
DATE	DETAILS	INIT.

LEGEND	
G	GAS
GS	GAS SERVICE
WM	WATER
WS	WATER SERVICE
SAN	SANITARY SEWER
SAN	SANITARY LATERAL
STM	STORM SEWER
STM	STORM LATERAL
SL	BURIED ELECTRIC
SL	BURIED ELECTRIC STREET LIGHT
TL	BURIED ELECTRIC TRAFFIC LIGHT
UNK	UNKNOWN
FOC	FIBRE OPTIC CABLE
TV	CABLE TV
B	BURIED TELECOMMUNICATIONS
---	QUALITY LEVEL "B"
---	QUALITY LEVEL "C"
---	QUALITY LEVEL "D"
OH	OVERHEAD HYDRO
⊙	TEST HOLE (DL-A)
#	NOT SURVEYED, LOCATION BASED ON FIELD OBSERVATION
ABD	NOT SURVEYED, LOCATION BASED ON RECORD INFORMATION
→	FLOW ARROW

ASCE QUALITY LEVELS	
THE UTILITY INFORMATION SHOWN ON THIS DRAWING WAS COLLECTED IN ACCORDANCE TO ASCE STANDARD 38-02. THE INFORMATION IS SHOWN BY QUALITY LEVEL WHICH INDICATES THE LEVEL OF EFFORT USED TO DETERMINE THE LOCATION OF THE DATA	
I	QUALITY LEVEL "D" - INFORMATION DERIVED FROM EXISTING RECORDS OR VERBAL RECOLLECTIONS.
N	
C	QUALITY LEVEL "C" - INFORMATION OBTAINED BY SURVEYING AND PLOTTING VISIBLE ABOVE GROUND UTILITY FEATURES AND BY USING PROFESSIONAL JUDGEMENT IN CORRELATING THIS INFORMATION TO THE QUALITY LEVEL "D" INFORMATION.
A	
S	
E	
D	QUALITY LEVEL "B" - INFORMATION OBTAINED THROUGH THE APPLICATION OF APPROPRIATE SURFACE GEOPHYSICAL METHODS TO DETERMINE THE EXISTENCE AND APPROXIMATE HORIZONTAL POSITION OF THE UTILITIES.
Q	
U	
A	
L	
I	QUALITY LEVEL "A" - PRECISE HORIZONTAL AND VERTICAL LOCATION OF UTILITIES OBTAINED BY THE ACTUAL EXPOSURE AND SUBSEQUENT MEASUREMENT OF SUBSURFACE UTILITIES.
T	
Y	

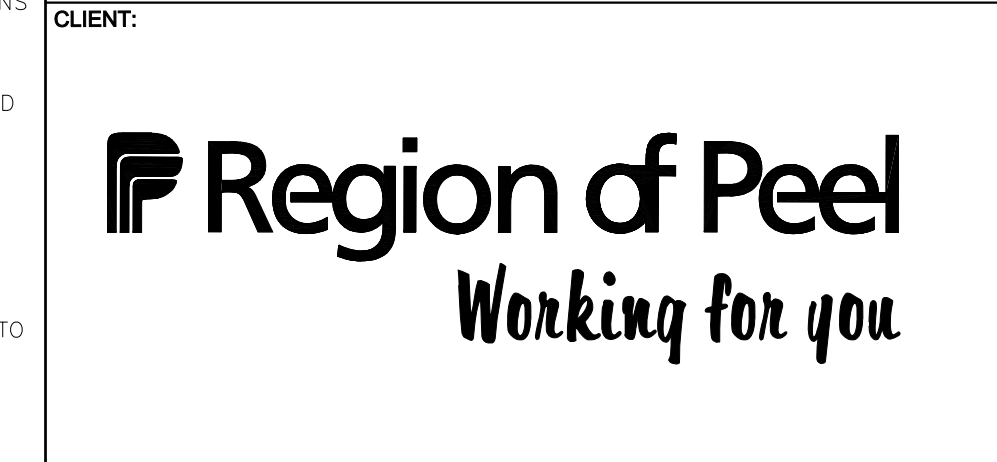
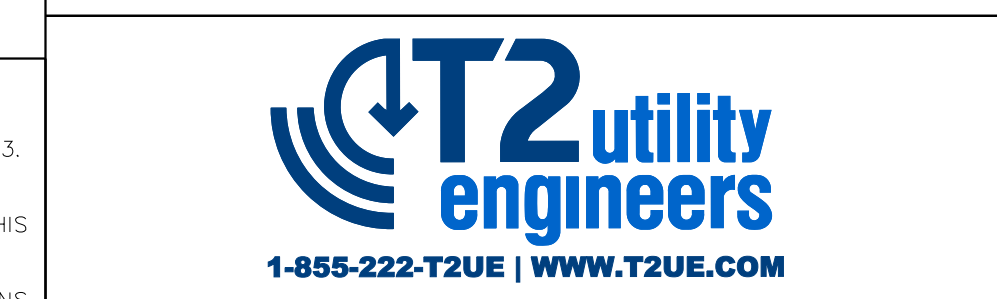
THE ENGINEER'S SEAL HEREON IS TO CERTIFY THAT THE UTILITIES SHOWN HAVE BEEN INVESTIGATED IN ACCORDANCE WITH STANDARD SUE INDUSTRY PRACTICES. ALL OTHER INFORMATION HEREON HAS BEEN PROVIDED BY OTHERS AND IS NOT A PART OF THIS CERTIFICATION.

DISCLAIMER:
THIS DRAWING HAS BEEN PREPARED FOR THE USE OF T2UE'S CLIENT AND MAY NOT BE USED, REPRODUCED OR RELIED UPON BY THIRD PARTIES, EXCEPT AS AGREED BY T2UE AND ITS CLIENT, AS REQUIRED BY LAW OR FOR USE BY GOVERNMENT REVIEWING AGENCIES. T2UE ACCEPTS NO RESPONSIBILITY, AND DENIES ANY LIABILITY WHATSOEVER, TO ANY PARTY THAT MODIFIES THIS DRAWING WITHOUT T2UE'S EXPRESS WRITTEN CONSENT.

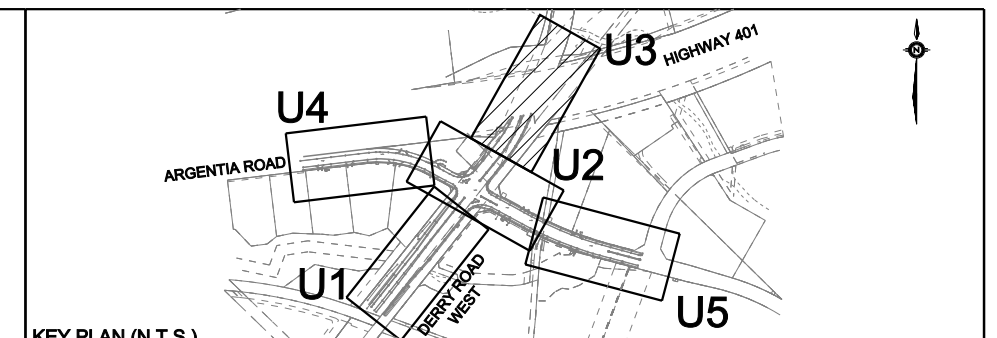
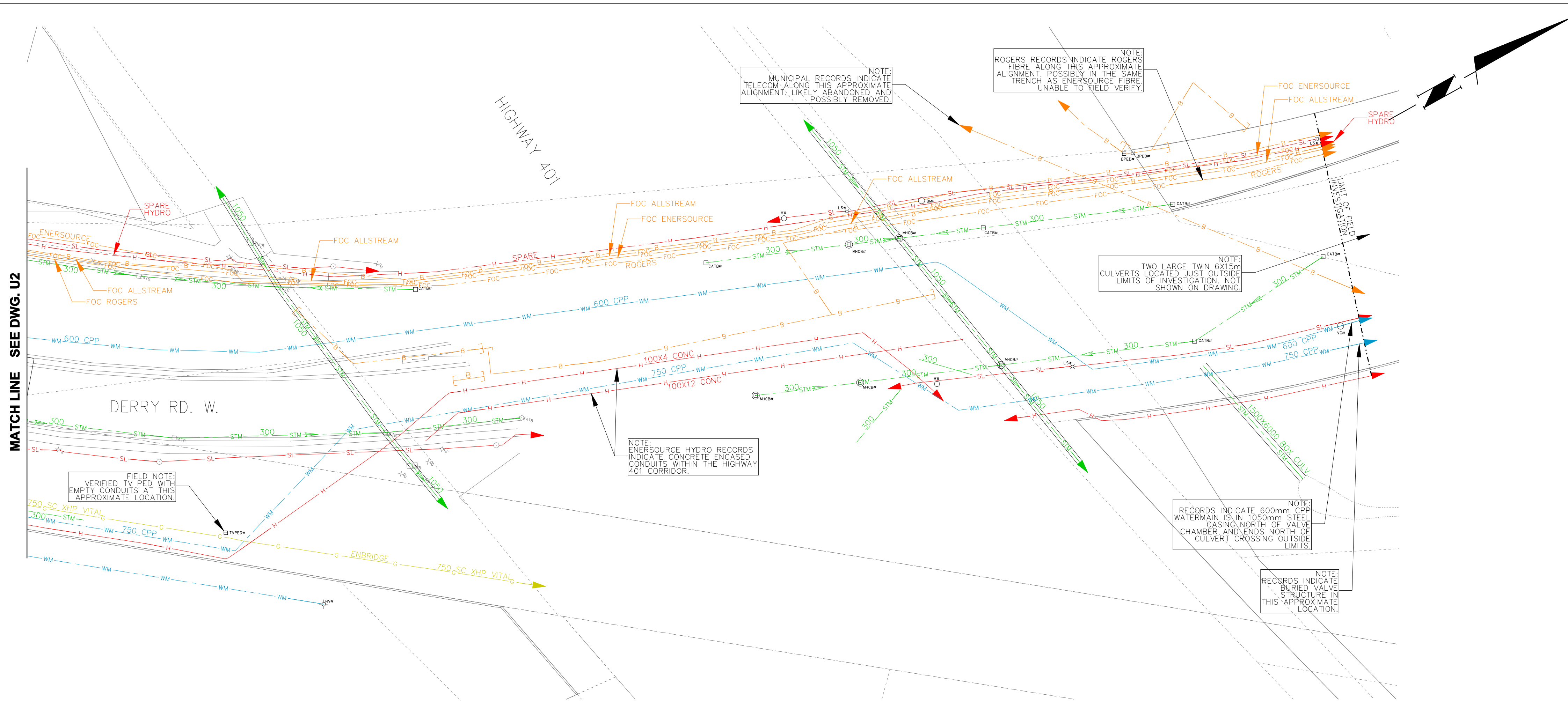


PRELIMINARY

- GENERAL NOTES**
- T2 UTILITY ENGINEERS (T2UE) SUE FIELD INVESTIGATION WAS COMPLETED IN SEPTEMBER 2013. CHANGES TO UTILITIES THAT OCCURRED FOLLOWING OUR INVESTIGATION MAY NOT BE SHOWN. CONSIDERATION SHOULD BE GIVEN TO UPDATING THIS PLAN PRIOR TO FINAL DESIGN AND CONSTRUCTION.
 - LIMIT OF INVESTIGATION: 300m IN ALL DIRECTIONS FROM CENTERLINE OF DERRY ROAD AND ARGENTIA ROAD INTERSECTION.
 - FIELD VERIFICATION OF UTILITIES WAS COMPLETED USING A COMBINATION OF ELECTROMAGNETIC PIPE AND CABLE LOCATE EQUIPMENT.
 - EMPTY CONDUITS, SERVICES, STREETLIGHTING CABLES, LATERALS TO BUILDINGS, ABANDONED FACILITIES, WITHIN THE INVESTIGATION AREA MAY NOT BE SHOWN ON THE DRAWING.
 - T2UE USED AVAILABLE MEANS IN AN ATTEMPT TO DETERMINE THE LOCATION OF UNDOCUMENTED UTILITIES HOWEVER CANNOT BE RESPONSIBLE FOR FINDING ALL UNDOCUMENTED UTILITIES.
 - SURVEY OF T2UE'S UNDERGROUND UTILITY INFORMATION WAS COMPLETED BY ACL.
 - THE BASEPLAN WAS PROVIDED BY THE CLIENT, THEREFORE T2UE IS NOT RESPONSIBLE FOR ITS ACCURACY.
 - UTILITY MATERIALS AND SIZES SHOWN ON DRAWING ARE BASED ON RECORDS INFORMATION RECEIVED, PROFESSIONAL JUDGEMENT, OR FIELD OBSERVATIONS.
 - UTILITY OWNERSHIP SHOWN ON DRAWING IS BASED ON RECORDS INFORMATION RECEIVED, PROFESSIONAL JUDGEMENT, OR FIELD OBSERVATIONS.
 - SEE PROJECT REPORT FOR ADDITIONAL INFORMATION.



DERRY-ARGENTIA INTERSECTION IMPROVEMENTS		
DERRY ROAD WEST (DERRY ROAD & ARGENTIA ROAD INTERSECTION)		
SUBSURFACE UTILITY ENGINEERING INVESTIGATION		
CAD Area	Area	Project No. 61000235
Checked by M.B.	Drawn by N.F.	
Date OCTOBER 2013	Sheet 2 of 5	Plan No. U2



REVISIONS		
DATE	DETAILS	INIT.

LEGEND	
—G—	GAS
—GS—	GAS SERVICE
—W—	WATER
—WS—	WATER SERVICE
—SAN—	SANITARY SEWER
—SANL—	SANITARY LATERAL
—STM—	STORM SEWER
—STM—	STORM LATERAL
—H—	BURIED ELECTRIC
—SL—	BURIED ELECTRIC STREET LIGHT
—TL—	BURIED ELECTRIC TRAFFIC LIGHT
—UNK—	UNKNOWN
—FOC—	FIBRE OPTIC CABLE
—TV—	CABLE TV
—B—	BURIED TELECOMMUNICATIONS
—B—	QUALITY LEVEL "B"
—C—	QUALITY LEVEL "C"
—D—	QUALITY LEVEL "D"
—OH—	OVERHEAD HYDRO
⊙	TEST HOLE (DL-A)
⊙	NOT SURVEYED, LOCATION BASED ON FIELD OBSERVATION
#	NOT SURVEYED, LOCATION BASED ON RECORD INFORMATION
ABD	ABANDONED
→	FLOW ARROW

ASCE QUALITY LEVELS

THE UTILITY INFORMATION SHOWN ON THIS DRAWING WAS COLLECTED IN ACCORDANCE TO ASCE STANDARD 38-02. THE INFORMATION IS SHOWN BY QUALITY LEVEL WHICH INDICATES THE LEVEL OF EFFORT USED TO DETERMINE THE LOCATION OF THE DATA.

I QUALITY LEVEL "I" — INFORMATION DERIVED FROM EXISTING RECORDS OR VERBAL RECOLLECTIONS.

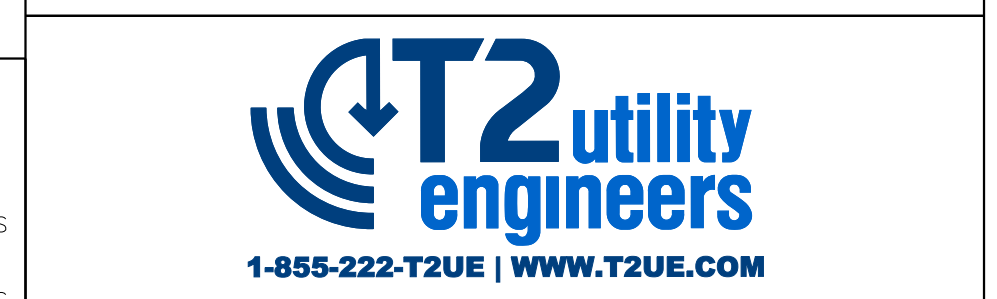
N C R QUALITY LEVEL "C" — INFORMATION OBTAINED BY SURVEYING AND PLOTTING VISIBLE ABOVE GROUND UTILITY FEATURES AND BY USING PROFESSIONAL JUDGEMENT IN CORRELATING THIS INFORMATION TO THE QUALITY LEVEL "D" INFORMATION.

D QUALITY LEVEL "D" — INFORMATION OBTAINED THROUGH THE APPLICATION OF APPROPRIATE SURFACE GEOPHYSICAL METHODS TO DETERMINE THE EXISTENCE AND APPROXIMATE HORIZONTAL POSITION OF THE UTILITIES.

A L I QUALITY LEVEL "A" — PRECISE HORIZONTAL AND VERTICAL LOCATION OF UTILITIES OBTAINED BY THE ACTUAL EXPOSURE AND SUBSEQUENT MEASUREMENT OF SUBSURFACE UTILITIES.

THE ENGINEER'S SEAL HEREON IS TO CERTIFY THAT THE UTILITIES SHOWN HAVE BEEN INVESTIGATED IN ACCORDANCE WITH STANDARD SUE INDUSTRY PRACTICES. ALL OTHER INFORMATION HEREON HAS BEEN PROVIDED BY OTHERS AND IS NOT A PART OF THIS CERTIFICATION.

DISCLAIMER:
THIS DRAWING HAS BEEN PREPARED FOR THE USE OF T2UE'S CLIENT AND MAY NOT BE USED, REPRODUCED OR RELIED UPON BY THIRD PARTIES, EXCEPT AS AGREED BY T2UE AND ITS CLIENT, AS REQUIRED BY LAW OR FOR USE BY GOVERNMENT REVIEWING AGENCIES. T2UE ACCEPTS NO RESPONSIBILITY, AND DENIES ANY LIABILITY WHATSOEVER, TO ANY PARTY THAT MODIFIES THIS DRAWING WITHOUT T2UE'S EXPRESS WRITTEN CONSENT.



CLIENT:

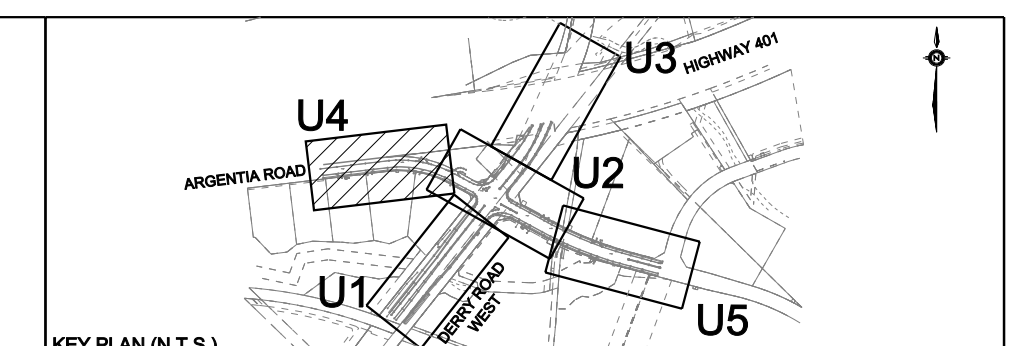
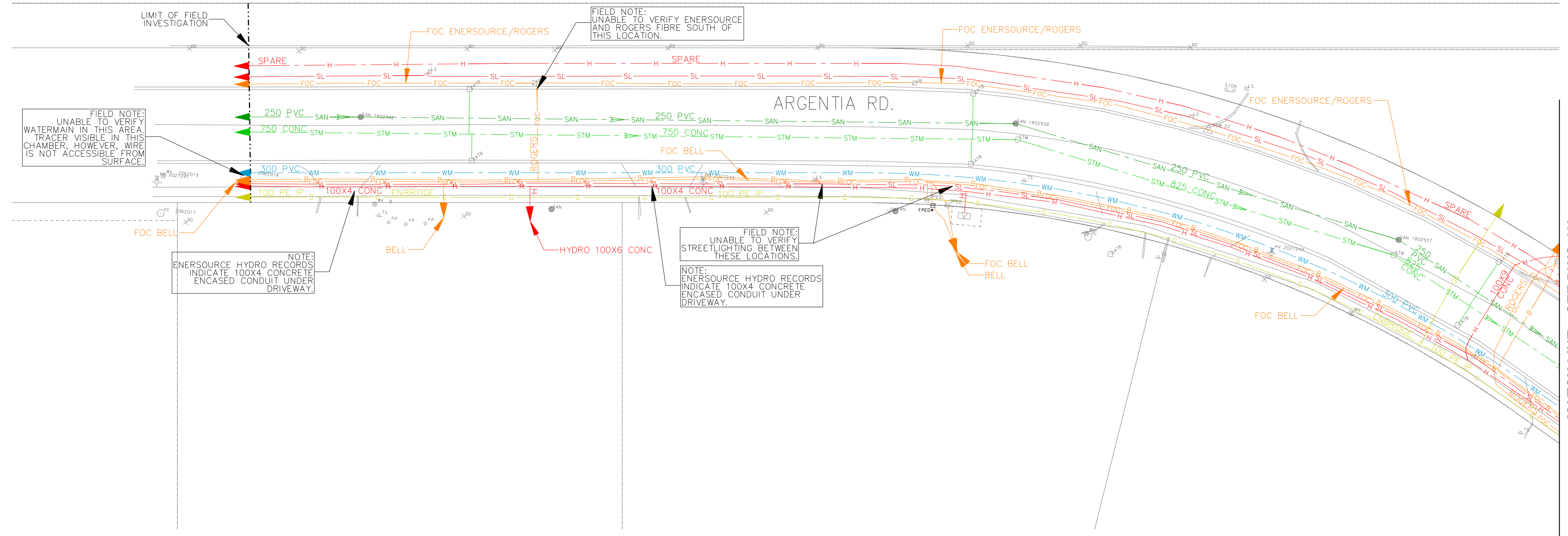
Region of Peel
Working for you

DERRY-ARGENTIA INTERSECTION IMPROVEMENTS
DERRY ROAD WEST
(DERRY ROAD & ARGENTIA ROAD INTERSECTION)
SUBSURFACE UTILITY ENGINEERING INVESTIGATION

CAD Area	Area	Project No.	61000235
Checked by M.B.	Drawn by N.F.		
Date OCTOBER 2013	Sheet 3 of 5	Plan No.	U3

PRELIMINARY

- GENERAL NOTES**
- T2 UTILITY ENGINEERS (T2UE) SUE FIELD INVESTIGATION WAS COMPLETED IN SEPTEMBER 2013. CHANGES TO UTILITIES THAT OCCURRED FOLLOWING OUR INVESTIGATION MAY NOT BE SHOWN. CONSIDERATION SHOULD BE GIVEN TO UPDATING THIS PLAN PRIOR TO FINAL DESIGN AND CONSTRUCTION.
 - LIMIT OF INVESTIGATION: 300m IN ALL DIRECTIONS FROM CENTERLINE OF DERRY ROAD AND ARGENTIA ROAD INTERSECTION.
 - FIELD VERIFICATION OF UTILITIES WAS COMPLETED USING A COMBINATION OF ELECTROMAGNETIC PIPE AND CABLE LOCATE EQUIPMENT.
 - EMPTY CONDUITS, SERVICES, STREETLIGHTING CABLES, LATERALS TO BUILDINGS, ABANDONED FACILITIES, WITHIN THE INVESTIGATION AREA MAY NOT BE SHOWN ON THE DRAWING.
 - T2UE USED AVAILABLE MEANS IN AN ATTEMPT TO DETERMINE THE LOCATION OF UNDOCUMENTED UTILITIES HOWEVER CANNOT BE RESPONSIBLE FOR FINDING ALL UNDOCUMENTED UTILITIES.
 - SURVEY OF T2UE'S UNDERGROUND UTILITY INFORMATION WAS COMPLETED BY ACL.
 - THE BASEPLAN WAS PROVIDED BY THE CLIENT, THEREFORE T2UE IS NOT RESPONSIBLE FOR ITS ACCURACY.
 - UTILITY MATERIALS AND SIZES SHOWN ON DRAWING ARE BASED ON RECORDS INFORMATION RECEIVED, PROFESSIONAL JUDGEMENT, OR FIELD OBSERVATIONS.
 - UTILITY OWNERSHIP SHOWN ON DRAWING IS BASED ON RECORDS INFORMATION RECEIVED, PROFESSIONAL JUDGEMENT, OR FIELD OBSERVATIONS.
 - SEE PROJECT REPORT FOR ADDITIONAL INFORMATION.



REVISIONS		
DATE	DETAILS	INIT.

LEGEND	
—G—	GAS
—GS—	GAS SERVICE
—WM—	WATER
—WS—	WATER SERVICE
—SAN—	SANITARY SEWER
—SL—	SANITARY LATERAL
—STM—	STORM SEWER
—STL—	STORM LATERAL
—H—	BURIED ELECTRIC
—SL—	BURIED ELECTRIC STREET LIGHT
—TL—	BURIED ELECTRIC TRAFFIC LIGHT
—UNK—	UNKNOWN
—FOC—	FIBRE OPTIC CABLE
—TV—	CABLE TV
—B—	BURIED TELECOMMUNICATIONS
—xxx—	QUALITY LEVEL "B"
—xxx—	QUALITY LEVEL "C"
—xxx—	QUALITY LEVEL "D"
—OH—	OVERHEAD HYDRO
⊙	TEST HOLE (DL-A)
⊙	NOT SURVEYED, LOCATION BASED ON FIELD OBSERVATION
#	NOT SURVEYED, LOCATION BASED ON RECORD INFORMATION
ABD	ABANDONED
→	FLOW ARROW

ASCE QUALITY LEVELS	
THE UTILITY INFORMATION SHOWN ON THIS DRAWING WAS COLLECTED IN ACCORDANCE TO ASCE STANDARD 38-02. THE INFORMATION IS SHOWN BY QUALITY LEVEL WHICH INDICATES THE LEVEL OF EFFORT USED TO DETERMINE THE LOCATION OF THE DATA.	
I N C R E A S E D Q U A L I T Y	QUALITY LEVEL "D" — INFORMATION DERIVED FROM EXISTING RECORDS OR VERBAL RECOLLECTIONS.
	QUALITY LEVEL "C" — INFORMATION OBTAINED BY SURVEYING AND PLOTTING VISIBLE ABOVE GROUND UTILITY FEATURES AND BY USING PROFESSIONAL JUDGEMENT IN CORRELATING THIS INFORMATION TO THE QUALITY LEVEL "D" INFORMATION.
	QUALITY LEVEL "B" — INFORMATION OBTAINED THROUGH THE APPLICATION OF APPROPRIATE SURFACE GEOPHYSICAL METHODS TO DETERMINE THE EXISTENCE AND APPROXIMATE HORIZONTAL POSITION OF THE UTILITIES.
	QUALITY LEVEL "A" — PRECISE HORIZONTAL AND VERTICAL LOCATION OF UTILITIES OBTAINED BY THE ACTUAL EXPOSURE AND SUBSEQUENT MEASUREMENT OF SUBSURFACE UTILITIES.

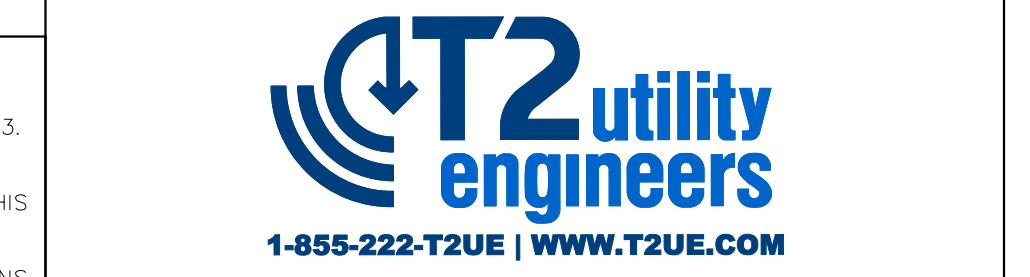
THE ENGINEER'S SEAL HEREON IS TO CERTIFY THAT THE UTILITIES SHOWN HAVE BEEN INVESTIGATED IN ACCORDANCE WITH STANDARD SUE INDUSTRY PRACTICES. ALL OTHER INFORMATION HEREON HAS BEEN PROVIDED BY OTHERS AND IS NOT A PART OF THIS CERTIFICATION.

DISCLAIMER:
THIS DRAWING HAS BEEN PREPARED FOR THE USE OF T2UE'S CLIENT AND MAY NOT BE USED, REPRODUCED OR RELIED UPON BY THIRD PARTIES, EXCEPT AS AGREED BY T2UE AND ITS CLIENT, AS REQUIRED BY LAW OR FOR USE BY GOVERNMENT REVIEWING AGENCIES. T2UE ACCEPTS NO RESPONSIBILITY, AND DENIES ANY LIABILITY WHATSOEVER, TO ANY PARTY THAT MODIFIES THIS DRAWING WITHOUT T2UE'S EXPRESS WRITTEN CONSENT.



PRELIMINARY

- GENERAL NOTES**
- T2 UTILITY ENGINEERS (T2UE) SUE FIELD INVESTIGATION WAS COMPLETED IN SEPTEMBER 2013. CHANGES TO UTILITIES THAT OCCURRED FOLLOWING OUR INVESTIGATION MAY NOT BE SHOWN. CONSIDERATION SHOULD BE GIVEN TO UPDATING THIS PLAN PRIOR TO FINAL DESIGN AND CONSTRUCTION.
 - LIMIT OF INVESTIGATION: 300m IN ALL DIRECTIONS FROM CENTERLINE OF DERRY ROAD AND ARGENTIA ROAD INTERSECTION.
 - FIELD VERIFICATION OF UTILITIES WAS COMPLETED USING A COMBINATION OF ELECTROMAGNETIC PIPE AND CABLE LOCATE EQUIPMENT.
 - EMPTY CONDUITS, SERVICES, STREETLIGHTING CABLES, LATERALS TO BUILDINGS, ABANDONED FACILITIES, WITHIN THE INVESTIGATION AREA MAY NOT BE SHOWN ON THE DRAWING.
 - T2UE USED AVAILABLE MEANS IN AN ATTEMPT TO DETERMINE THE LOCATION OF UNDOCUMENTED UTILITIES HOWEVER CANNOT BE RESPONSIBLE FOR FINDING ALL UNDOCUMENTED UTILITIES.
 - SURVEY OF T2UE'S UNDERGROUND UTILITY INFORMATION WAS COMPLETED BY ACL.
 - THE BASEPLAN WAS PROVIDED BY THE CLIENT, THEREFORE T2UE IS NOT RESPONSIBLE FOR ITS ACCURACY.
 - UTILITY MATERIALS AND SIZES SHOWN ON DRAWING ARE BASED ON RECORDS INFORMATION RECEIVED, PROFESSIONAL JUDGEMENT, OR FIELD OBSERVATIONS.
 - UTILITY OWNERSHIP SHOWN ON DRAWING IS BASED ON RECORDS INFORMATION RECEIVED, PROFESSIONAL JUDGEMENT, OR FIELD OBSERVATIONS.
 - SEE PROJECT REPORT FOR ADDITIONAL INFORMATION.

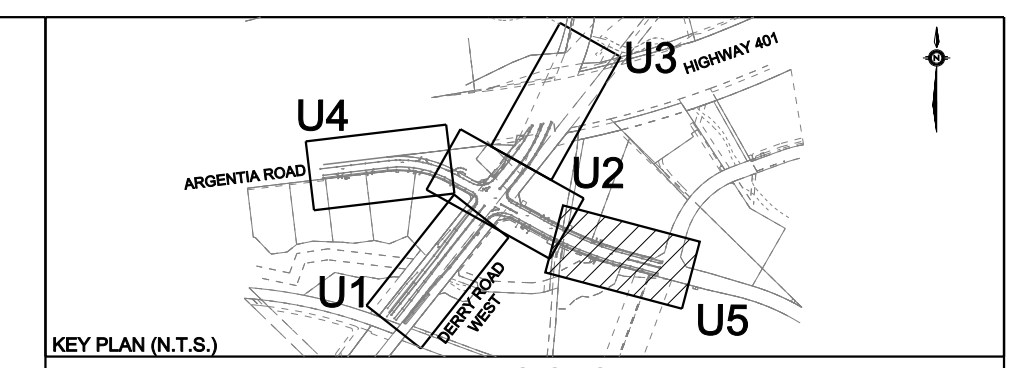
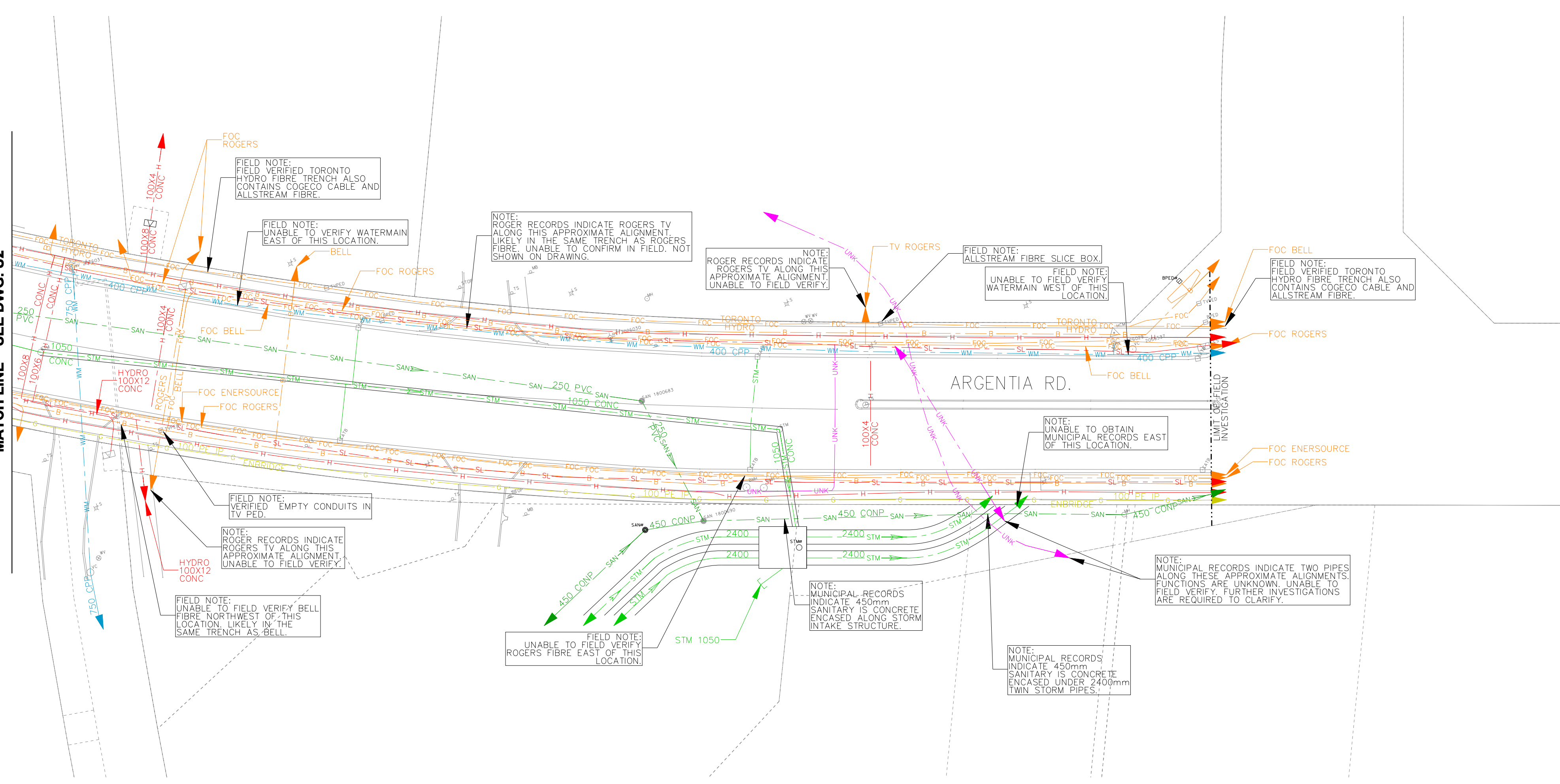


CLIENT:
Region of Peel
Working for you

DERRY-ARGENTIA INTERSECTION IMPROVEMENTS
ARGENTIA ROAD
(DERRY ROAD & ARGENTIA ROAD INTERSECTION)
SUBSURFACE UTILITY ENGINEERING INVESTIGATION

CAD Area	Area	Project No.	61000235
Checked by M.B.	Drawn by N.F.	Sheet	4 of 5
Date OCTOBER 2013	Plan No.	U4	

MATCH LINE SEE DWG. U2



REVISIONS		
DATE	DETAILS	INIT.

LEGEND	
—G—	GAS
—GS—	GAS SERVICE
—WM—	WATER
—WS—	WATER SERVICE
—SAN—	SANITARY SEWER
—SAN—	SANITARY LATERAL
—STM—	STORM SEWER
—STM—	STORM LATERAL
—H—	BURIED ELECTRIC
—SL—	BURIED ELECTRIC STREET LIGHT
—TL—	BURIED ELECTRIC TRAFFIC LIGHT
—UNK—	UNKNOWN
—FOC—	FIBRE OPTIC CABLE
—TV—	CABLE TV
—B—	BURIED TELECOMMUNICATIONS
—xxx—	QUALITY LEVEL "B"
—xxx—	QUALITY LEVEL "C"
—xxx—	QUALITY LEVEL "D"
—OH—	OVERHEAD HYDRO
⊙	TEST HOLE (OL-A)
⊙	NOT SURVEYED, LOCATION BASED ON FIELD OBSERVATION
#	NOT SURVEYED, LOCATION BASED ON RECORD INFORMATION
ABD	ABANDONED
→	FLOW ARROW

ASCE QUALITY LEVELS

THE UTILITY INFORMATION SHOWN ON THIS DRAWING WAS COLLECTED IN ACCORDANCE TO ASCE STANDARD 38-02. THE INFORMATION IS SHOWN BY QUALITY LEVEL WHICH INDICATES THE LEVEL OF EFFORT USED TO DETERMINE THE LOCATION OF THE DATA

I QUALITY LEVEL "D" — INFORMATION DERIVED FROM EXISTING RECORDS OR VERBAL RECOLLECTIONS.

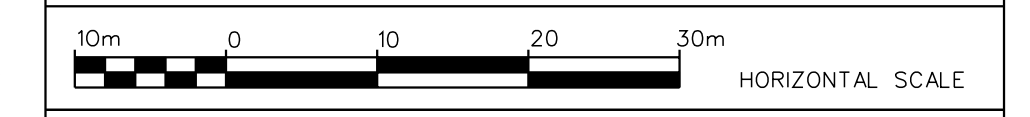
N C QUALITY LEVEL "C" — INFORMATION OBTAINED BY SURVEYING AND PLOTTING VISIBLE ABOVE GROUND UTILITY FEATURES AND BY USING PROFESSIONAL JUDGEMENT IN CORRELATING THIS INFORMATION TO THE QUALITY LEVEL "D" INFORMATION.

D E QUALITY LEVEL "B" — INFORMATION OBTAINED THROUGH THE APPLICATION OF APPROPRIATE SURFACE GEOPHYSICAL METHODS TO DETERMINE THE EXISTENCE AND APPROXIMATE HORIZONTAL POSITION OF THE UTILITIES.

A U QUALITY LEVEL "A" — PRECISE HORIZONTAL AND VERTICAL LOCATION OF UTILITIES OBTAINED BY THE ACTUAL EXPOSURE AND SUBSEQUENT MEASUREMENT OF SUBSURFACE UTILITIES.

THE ENGINEER'S SEAL HEREON IS TO CERTIFY THAT THE UTILITIES SHOWN HAVE BEEN INVESTIGATED IN ACCORDANCE WITH STANDARD SUE INDUSTRY PRACTICES. ALL OTHER INFORMATION HEREON HAS BEEN PROVIDED BY OTHERS AND IS NOT A PART OF THIS CERTIFICATION.

DISCLAIMER:
THIS DRAWING HAS BEEN PREPARED FOR THE USE OF T2UE'S CLIENT AND MAY NOT BE USED, REPRODUCED OR RELIED UPON BY THIRD PARTIES, EXCEPT AS AGREED BY T2UE AND ITS CLIENT, AS REQUIRED BY LAW OR FOR USE BY GOVERNMENT REVIEWING AGENCIES. T2UE ACCEPTS NO RESPONSIBILITY, AND DENIES ANY LIABILITY WHATSOEVER, TO ANY PARTY THAT MODIFIES THIS DRAWING WITHOUT T2UE'S EXPRESS WRITTEN CONSENT.



PRELIMINARY

- GENERAL NOTES**
- T2 UTILITY ENGINEERS (T2UE) SUE FIELD INVESTIGATION WAS COMPLETED IN SEPTEMBER 2013. CHANGES TO UTILITIES THAT OCCURRED FOLLOWING OUR INVESTIGATION MAY NOT BE SHOWN. CONSIDERATION SHOULD BE GIVEN TO UPDATING THIS PLAN PRIOR TO FINAL DESIGN AND CONSTRUCTION.
 - LIMIT OF INVESTIGATION: 300m IN ALL DIRECTIONS FROM CENTERLINE OF DERRY ROAD AND ARGENTIA ROAD INTERSECTION.
 - FIELD VERIFICATION OF UTILITIES WAS COMPLETED USING A COMBINATION OF ELECTROMAGNETIC PIPE AND CABLE LOCATE EQUIPMENT.
 - EMPTY CONDUITS, SERVICES, STREETLIGHTING CABLES, LATERALS TO BUILDINGS, ABANDONED FACILITIES, WITHIN THE INVESTIGATION AREA MAY NOT BE SHOWN ON THE DRAWING.
 - T2UE USED AVAILABLE MEANS IN AN ATTEMPT TO DETERMINE THE LOCATION OF UNDOCUMENTED UTILITIES HOWEVER CANNOT BE RESPONSIBLE FOR FINDING ALL UNDOCUMENTED UTILITIES.
 - SURVEY OF T2UE'S UNDERGROUND UTILITY INFORMATION WAS COMPLETED BY ACL.
 - THE BASEPLAN WAS PROVIDED BY THE CLIENT, THEREFORE T2UE IS NOT RESPONSIBLE FOR ITS ACCURACY.
 - UTILITY MATERIALS AND SIZES SHOWN ON DRAWING ARE BASED ON RECORDS INFORMATION RECEIVED, PROFESSIONAL JUDGEMENT, OR FIELD OBSERVATIONS.
 - UTILITY OWNERSHIP SHOWN ON DRAWING IS BASED ON RECORDS INFORMATION RECEIVED, PROFESSIONAL JUDGEMENT, OR FIELD OBSERVATIONS.
 - SEE PROJECT REPORT FOR ADDITIONAL INFORMATION.

CLIENT:

DERRY-ARGENTIA INTERSECTION IMPROVEMENTS
ARGENTIA ROAD
(DERRY ROAD & ARGENTIA ROAD INTERSECTION)
SUBSURFACE UTILITY ENGINEERING INVESTIGATION

CAD Area	Area	Project No.	61000235
Checked by	M.B.	Drawn by	N.F.
Date	OCTOBER 2013	Sheet	5 of 5
		Plan No.	U5