

# Message from Councillor Richard Whitehead

Reporting to the Citizens of Caledon – Wards 3 & 4

18820 The Gore Rd. • Caledon, ON • L7K 2M7  
905-880-0911 • Fax: 905-880-2385  
E-mail: richard.whitehead@caledon.ca

## Snow Removal

Peel provides an immediate response, “bare pavement” policy to deal with winter road conditions so you can travel safely with routes you can count on. The Winter Road Maintenance team operates seven days a week, 24-hours a day. Scheduled snow clearing routes take no more than two and a half hours to complete, and the Region also has 24-hour road patrols and weather monitoring to proactively maintain road safety during the winter season.

Remember to do your part when icy road conditions arrive: listen to traffic reports and drive with caution during or after snowstorms.

For more information, visit [www.peelregion.ca/pw/roads/winter-maint](http://www.peelregion.ca/pw/roads/winter-maint)

DEAR RESIDENTS OF WARDS 3 & 4,

*The Region of Peel plays a very important role in our community of Caledon. From the Regional level of government, we receive police services, public health, social services, supportive housing, paramedic services, municipal water and sanitary sewer services, waste management, high volume Regional road planning, environmental protection and debt management.*

*The Region is one of Canada’s most successful municipalities, with no tax supported debt and substantial financial reserves. Peel stands ready and able to manage our future of rapid change and economic expansion. Stability and progress fosters strong local communities built and sustained on a foundation of fairness, equity and opportunity for all people.*

*Peel and Caledon continue to provide leadership in environmental protection and resource management. New Provincial policy initiatives are having a pronounced affect in how we deal with our greenspace, agriculture, rural and estate housing, villages and hamlets, and the future urban expansion areas of South Albion.*

*We are now completing a process to conform with the government of Ontario’s Places to Grow policy initiative that will influence our quality of life and community living for the next generation. We are on the threshold of change that will have a profound effect on our future.*

*This newsletter highlights many infrastructure initiatives that affect our water, roads, transportation, land conservation, and the environment – all of which contribute so much to our quality of life and community health and safety.*

*In these uncertain economic times and with continued expansion pressures from the GTA, it’s important for us to set our own objectives and to manage our future in a way that is beneficial to our local economy and ecosystem.*

*I look forward to our continued partnership in shaping Caledon and Peel.*

*Together we can continue to build a happy, healthy and sustainable community. Together we will make a difference.*



Richard Whitehead

## Interconnection of the Palgrave and Caledon East water systems

This project involves the construction of a booster pumping station on Old Church Road, plus the installation of a 400mm watermain to connect the Palgrave water system to the Caledon East water system.



The pumping station will be located at the existing Centreville Well #2 site (7860 Old Church Rd.), and the watermain will be installed from the booster pumping station to Innis Lake Road.

These infrastructure improvements will allow water to move in both directions, which improves system reliability. The project is nearing the end of the design phase, and construction is scheduled to begin this December for approximately one year.

This project is funded through the Infrastructure Stimulus Fund, where both the federal and provincial governments have partnered with the Region of Peel for the completion of approved infrastructure projects.

### Water services

Properties that front the new watermain installation may have the opportunity to connect to the municipal water system. The Region of Peel is responsible for water service lines and valves to the property line; property owners will be responsible for the co-ordination and payment of water service line installation up to their home. The Region will decommission private wells under an existing program, if required.

Residents in the project area will be notified as more information is available.

## Source water protection in Caledon

In 2006, the Province passed the *Clean Water Act* to protect sources of municipal drinking water. The *Clean Water Act* was developed to address the recommendations of the Walkerton Inquiry.

The Region of Peel and the local conservation authorities are in the process of completing studies for source water assessment reports, as directed under the *Clean Water Act*. The assessment reports are the science behind developing source water protection policies – which will then direct long-term source protection plans.

Public consultation on the studies is scheduled for early 2010, and the final assessment reports for the Region are due summer 2010. Source protection plans are scheduled for completion in 2012.

## Environmental assessments in Wards 3 and 4

### North Bolton elevated tank

The North Bolton Elevated Tank Environmental Assessment is underway: it identifies four potential tank sites, and three possible routes for the feedermain. All routes start from the existing elevated tank on Coleraine Drive and will be dependent on the final tank site.

The detailed investigations are being finalized to help the Region further evaluate options. Investigations include geotechnical, hydrogeological, route reconnaissance and environmental site assessment.

A Public Information Centre is planned for 2010, where the Region will present its recommendations on the preferred route and site. Feedback from the public and the partner agencies will be incorporated into the final recommendation.

### Caledon East water supply

To satisfy projected growth up to 2031, an Environmental Assessment has begun to identify water supply and water storage requirements for Caledon East.

The project is in the planning stage, which includes a review of background information, defining the study area and identifying critical issues.

More information will be made available to the public as the study progresses, including a notice of study commencement.

# A look at water treatment in Wards 3 and 4

## Water quality

The Region of Peel is dedicated to providing the highest quality water that exceeds Provincial standards. This is achieved by:

- testing thousands of water samples a year at the source, treatment facilities, throughout the distribution system and at homes and businesses
- having the newest technology at the water treatment facilities
- a very comprehensive management and maintenance program, including flushing and swabbing

## Swabbing the water system

The municipal wells serving the Palgrave and Caledon East water systems were recently upgraded with new technologies including iron removal. This work was completed to improve the aesthetic quality of your drinking water and to ensure it continues to exceed Provincial standards.

The Region has also swabbed the water distribution system in Palgrave and Caledon East to remove the iron that had settled in the system over time. The recently introduced iron removal treatment process strips the iron from the drinking water before it enters the water distribution system, significantly reducing the need to swab in the future.

Swabbing includes inserting bullet-shaped pieces of foam into an isolated section of watermain. The foam swabs are propelled by water pressure and scour the interior surface of the water main. The swabs and sediment are released from a fire hydrant at the end of the section of pipe.

## Lead testing

Peel's on-going enhanced water quality monitoring program continuously shows that the chemical characteristics of Peel's treated water are not corrosive, and do not cause the dissolution of lead in water from watermains or service lines leading up to homes and businesses.

The north Peel groundwater systems were constructed long after the use of lead pipes was banned. The majority of systems were constructed in the 1970s, and mostly of PVC piping.

Peel has had a comprehensive infrastructure upgrade program for many years. There are no known municipal lead service connections on the municipal side of Peel's drinking water systems.

If you have any questions about water quality in Peel, visit [www.peelregion.ca](http://www.peelregion.ca) to view annual *Water Quality Reports*.

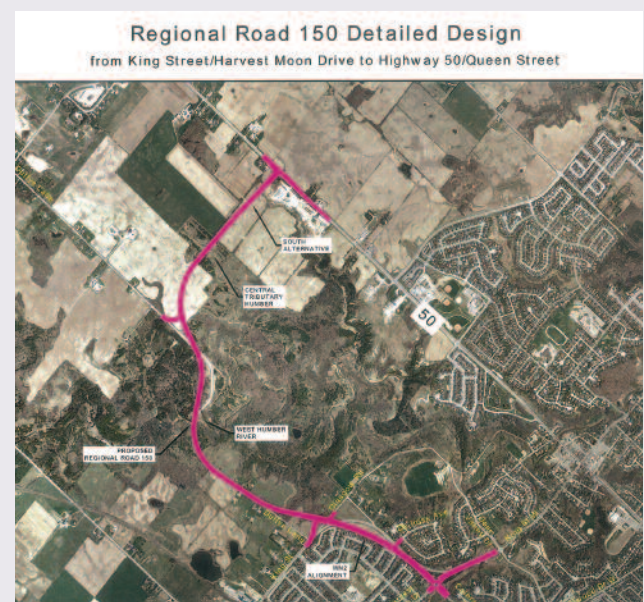
## Mono Mills

The original wells in Mono Mills were high in manganese, which stained plumbing fixtures and made disinfection of the water more challenging.

When Peel began looking at upgrading its water treatment facilities in Caledon, the Region found it would be more cost effective to install a watermain along Beech Grove Sideroad and connect Mono Mills with the Caledon Village water system, rather than install treatment to remove the manganese. (It is more cost effective to operate fewer large capacity wells than many low capacity wells.)

Installing the new watermain allowed the Region to abandon the wells in Mono Mills and Skywood Park by connecting that system to the new watermain along Beech Grove.

## Bolton By-Pass (northwest)



Completion 2012

## Study: Bolton GO rail station

A Bolton GO rail service will provide a comfortable and convenient travel option between Bolton and Toronto.

The Bolton rail service is identified in the Metrolinx Regional Transportation Plan. Metrolinx is conducting a feasibility study for service between Bolton and Toronto.

### The study will assess:

- potential ridership
- station locations
- infrastructure requirements
- impact on properties
- road improvements
- station terminus options

The feasibility study is an important step forward for rail service. According to GO Transit, the study is near completion. An environmental assessment will be the next step, subject to the successful completion and findings of the feasibility study.

Bolton rail service is anticipated to begin within five to 10 years.

---

## Improvements to Highway 50

Road improvements to Highway 50 (Regional Road 50) have been recently completed between Coleraine Drive to Countryside Drive. Work included road resurfacing and re-shouldering.

Resurfacing work from Hickman Street to Centennial Drive is anticipated to be completed by year end.

Design work began this year for rehabilitation of the CPR bridge between Healey Road and Queensgate Boulevard in Bolton. Construction is planned for 2011.

Future road widening from five lanes to seven lanes is proposed for:

- Queen Street East to Castlemore Road, with all lanes opening in 2010.
- Castlemore Road to 600 metres south of Countryside Drive – an environmental assessment (EA) is planned for 2010; anticipated construction in 2014.
- 600 metres south of Countryside Drive to Mayfield Road – an EA is planned for 2010; anticipated construction in 2015.

## GTA West Corridor EA

An environmental assessment (EA) is being conducted by the Ministry of Transportation for a new transportation corridor between Guelph and Vaughan/Highway 400.

The EA examines long-term transportation issues and opportunities to the year 2031. These include improving links between urban growth centres – Downtown Guelph, Downtown Milton, Brampton Downtown and Vaughan Corporate Centre.

The EA will determine a preferred solution – whether to build a highway, improve existing roads, or improve transit and rail services. A third Public Information Centre will be held later this year. The EA will be complete by mid-2010.

The Province and the Region are working together to address concerns about development pressure and protecting corridor lands.

In April 2009, Regional Council directed a GTA West Corridor Task Force be formed. The mandate includes supporting and expediting the EA, considering ways to protect land for the corridor, and addressing municipal planning and development issues.

Task Force members include the Regional Municipalities of Peel, Halton and York, Wellington County, and the Ministry of Transportation.

Visit [www.gta-west.com](http://www.gta-west.com) for more information.

## Highway 427 extension: Environmental study complete by end of 2009

The Ministry of Transportation's (MTO) environmental assessment (EA) for the Highway 427 extension is nearly complete. The study reviewed issues related to the highway extension including truck traffic, CPR Vaughan Intermodal Terminal and inter-regional traffic in the area. To date, the EA recommends the extension terminate at Major Mackenzie Drive with interchanges at Langstaff Road, Rutherford Road and Major Mackenzie Drive. The EA will be completed by the end of 2009. MTO estimates the earliest possible completion of the highway extension is late 2013 or early 2014.

For more information, visit [www.427corridor.com](http://www.427corridor.com)

# REGIONAL ROAD UPDATE

## Carpool Lot: Mayfield Road at Highway 50

The Region, in partnership with GO Transit, is constructing a carpool lot at the southwest corner of Mayfield Road and Highway 50. The first phase includes 204 parking spots. Construction commenced in November 2009. Surfacing and landscaping will be complete by June 2010.

## The Gore Road: King Street to Patterson Side Road

Road reconstruction on the Gore Road included localized sub-grade repairs, slope stabilization and pavement restoration. This project commenced in 2008 and should be complete by winter 2009.

## Airport Road: Mayfield Road to 1.3 km north

This road widening project (increasing from two to four lanes) is anticipated to start this spring and finish fall 2010.

## Bolton arterial road extension

The Bolton arterial road extension from the north end of Coleraine Drive to King Street is designed as an urban road – four lanes wide with a raised median.

The new extension from King Street north to Regional Road 50 is designed as a two-lane rural road.

Design is anticipated to be completed by the end of 2009. Property acquisition will begin in 2010. Construction is scheduled to start in 2011, with anticipated completion in 2012.

## Mayfield Road environmental assessment

Mayfield Road needs to meet the increasing demands of population growth, employment, development forecasts and other planned road improvements.

An ongoing environmental assessment is taking place for Mayfield Road from Airport Road to Coleraine Drive. A public

information centre (PIC) was held in June 2009 and another PIC will take place in the near future.

Improvements up for consideration may include:

- road widening
- intersection improvements
- replacement or expansion of various watercourse structures
- pavement rehabilitation
- mitigation of environmental impacts (natural and social)

A roundabout feasibility study is being conducted. Alternative design concepts are being developed for the preferred alternative solution. The preliminary design will be finalized based on the outcome of the feasibility study.

More information can be found at [www.peelregion.ca/pw/roads/ environ-assess/mayfield-road.htm](http://www.peelregion.ca/pw/roads/environ-assess/mayfield-road.htm)

### Changing Traffic Volumes

ROAD	LOCATION	DIRECTION	Average Number of Vehicles per Day											
			1998	1999	2000	2001	2002	2003	2004	2005	2006	2007	2008	2009
Airport Road	2.4 KM NORTH OF CHARLESTON SIDEROAD (RR24)	Northbound	4964	4427	4460	5971	4627	5608	5212	5225	4418	4070	5090	5482
		Southbound	4782	4603	4304	3613	5126	5527	5149	5578	4696	3983	4992	4842
Airport Road	2.1 KM NORTH OF MAYFIELD RD. (RR14)	Northbound	4350	4582	3558	3233	4717	4240	4971	5102	4480	4232	4356	4689
		Southbound	4713	4753	4444	4535	5012	4955	4535	4618	4440	4549	4770	5094
Gore Road	0.1 KM NORTH OF PATTERSON SIDEROAD	Northbound	1638	1591	1474	2060	1693	1853	1633	1831	1636	1647	1535	1732
		Southbound	1539	1346	1520	1591	1457	1832	1885	1650	1840	1921	1617	1709
King Street	0.6 KM WEST OF DUFFY'S LANE	Eastbound	4109	4334	4498	4582	4551	4732	4507	5273	5411	5145	5056	4868
		Westbound	4191	4306	3142	4447	4464	5216	5328	5334	5181	5090	4924	4987
Mayfield Road	0.6 KM WEST OF GORE RD. (RR8)	Eastbound	4678	5087	4953	5239	5887	6674	6314	6545	5732	6391	6346	6199
		Westbound	4387	4621	4176	2887	5468	6460	5575	5678	5751	5912	5870	5665
Old Church Road	1.5 KM EAST OF AIRPORT RD. (RR7)	Eastbound	1745	2148	2681	2151	2338	2362	2413	2352	2360	2538	2726	2491
		Westbound	2101	2136	2661	1999	2018	2137	2481	2414	2445	2631	3218	2498
Highway 50	0.2 KM NORTH OF 25TH SIDEROAD/ GIBSON LAKE	Northbound	4713	0	0	4892	4720	5540	5038	5998	4436	4111	5488	4948
		Southbound	4712	0	0	4563	5047	5517	5103	5769	4504	4507	5045	4508

# Greenland Securement: Campbell Property

A celebration took place in October 2009 to mark the successful acquisition of the Campbell Property by the Toronto and Region Conservation Authority (TRCA) – 92 acres of land on the north side of Columbia Way in Bolton have been added to our inventory of protected lands. This expansive and heavily forested valley is associated with Cold Creek and is part of the Oak Ridges Moraine. The Region of Peel contributed \$492,750 toward the \$985,500 purchase of the property.

<photo credit: Orland Conservation>



Our supportive partners who deserve thanks include: Conservation Foundation of Greater Toronto, Oak Ridges Moraine Foundation, Oak Ridges Moraine Land Trust and TRCA.

TRCA Chair Gerri Lynn O'Connor with Richard Whitehead, TRCA Board Member and Peel Regional Councillor.

## Palgrave Forest and Wildlife Area

Owned by the Toronto and Region Conservation Authority (TRCA), the Palgrave Forest and Wildlife Area (PFWA) is 306 hectares and located near Palgrave. TRCA worked with the Trail Plan Advisory Committee to develop a preferred trail plan for the property.

PFWA is made up primarily of sensitive forest habitat (267 hectares): almost 200 flora and fauna species of concern are found within the area. In fact, it provides breeding opportunities for several sensitive forest bird species.

TRCA's main activities in the PFWA are related to forest management and improving the diversity of trees within the older plantation areas. The area is also open to the public for recreation such as hiking, horseback riding, cross-country skiing and cycling.

PFWA is subject to several planning policies and designations. Both the Oak Ridges Moraine Conservation Plan and the Greenbelt Plan apply to the property, ensuring that it is a protected green space in southern Ontario. The property also includes sections of provincially designated Environmentally Significant Areas and Areas of Natural and Scientific Interest.

## Bolton Resource Management Tract

Toronto and Region Conservation Authority (TRCA) is leading the preparation of a management plan for the Bolton Resource Management Tract. The 800-hectare tract is located along the Humber River Valley, south of Old Church Road, north of King Street and west of Highway 50.

The plan's goal will be to protect, conserve, and manage the property within an ecosystem framework. The plan is being prepared with an advisory committee that includes local environmental and recreation groups, as well as municipal representatives.

Currently, the plan is in phase two of a three-phase process where draft management zones are being developed. Public consultation will follow before completion of the plan.

## Promoting health, wellness and recreation in Caledon

Caledon is fortunate to have the Toronto and Region Conservation Authority (TRCA) as a partner to enhance and protect our local green spaces.

Recently, TRCA received funding to repair and upgrade the trail system at Albion Hills Conservation Area – a testament to our active community's high use of the trails. The upgrades will allow for more public access to the trails, maintain low environmental impact, and contribute to the growth of trail activities at Albion Hills Conservation Area.

TRCA's commitment to barrier-free public access opportunities for all park visitors will improve the trails:

- creating 20 km of new mountain biking and fitness trails in order to meet current public demand
- enhancement of existing trails including re-surfacing, trail widening, bridge and rock work
- installation of accessible and barrier-free trails
- hazardous tree, shrub and debris trimming and removal

For more information, visit [www.trca.on.ca](http://www.trca.on.ca)



## Watershed monitoring

The Regional Watershed Monitoring Network is an ongoing program originally conceived by Toronto and Region Conservation (TRCA) to develop a comprehensive, integrated and co-ordinated approach to environmental monitoring in the Toronto region.

The program will fulfil the watershed monitoring and reporting needs of the Toronto Remedial Action Plan, the TRCA and those of the individual watershed and waterfront councils and alliances while furthering the interests of municipal, provincial and federal partners.

The network has developed indicators to measure environmental change at the broad watershed and subwatershed levels (known as Tier One monitoring) and will analyze the resulting data to assess the health of the regional environment. The data will then be used by the network partners to help guide environmental management decisions.

The network will focus on six primary areas: aquatic habitat and species and fluvial geomorphology (the physical features and processes of rivers), terrestrial natural heritage, surface water quality, flow and precipitation, ground water, and air quality.

Multiple indicators will be developed for each of the six areas of the network. These indicators fall into three general categories: condition (the current state of the environment); stress (natural or human-made pressures imposed on the environment); and response (individual or collective management actions to stop or change the pressures).

The condition-stress-response indicators are causally linked in a feedback system. This system can highlight potential success stories by illustrating how management actions (responses) can alter stresses on the environment, which in turn improve the general condition.

## COMMITTEES

Richard is an active member of a variety of Regional and local committees, boards and subcommittees:

### Region of Peel

- Peel Regional Council
- Audit Subcommittee (Chair)
- General Committee / Management Section (Chair)
- Peel Advisory Working Group on Older Adults' Housing
- Peel Housing Corporation Board of Directors
- GTA West Corridor Committee
- Goods Movement Committee

### Town of Caledon

- Town of Caledon Council
- Caledon Economic Development Committee
- Caledon Physician Recruitment Committee
- Caledon Accessibility Committee
- Caledon Audit Committee (Chair)

### Other

- Toronto and Region Conservation Authority
- Conservation action committees for Palgrave, Caledon East, and Bolton West
- Humber Watershed Alliance

## RICHARD WHITEHEAD

Regional and Town Councillor,  
Wards 3 & 4

Phone: 905-880-0911 Fax: 905-880-2385

E-mail: [richard.whitehead@caledon.ca](mailto:richard.whitehead@caledon.ca)

18820 The Gore Rd.  
Caledon, ON  
L7K 2M7



Operation  
Red Nose™

CALEDON

Your Ticket to a Safe Drive  
Home this Holiday Season.

**FREE!**

The program operates  
Thursday, Friday, Saturday  
Nov. 27, 28 & Dec. 3, 4,  
5, 10, 11, 12, 17, 18, 19, 31.  
9:00pm to 2:00am  
For Pick Up (in your vehicle) Call:

**905 857 1439**

*Operation Red Nose* is an annual national campaign conducted over the holiday season to combat impaired driving. The volunteer-run program provides motorists with a free, safe, confidential ride in their own vehicle without taking the wheel themselves.

**Primary service area will be from Albion-King Townline Road to Highway 10, and from Mayfield Road to Highway 9.**

A call to the program's control centre will dispatch a team of volunteers to the pick up location. The owner and guests will be driven to their destination in their own vehicle.