

## 11. PARKS SERVICES

Parks Services supports the recreational and leisure needs of the community. Parkland both maintained and natural enhances quality of life, economic, cultural and environmental well-being of the community and is a key component in sustainability plans.

The objectives of Parks Services include the provision of:

- clean, safe, welcoming parks and natural spaces for all residents to enjoy
- opportunities for physical activity including both recreational and competitive sports

### What should you consider when reviewing the results?

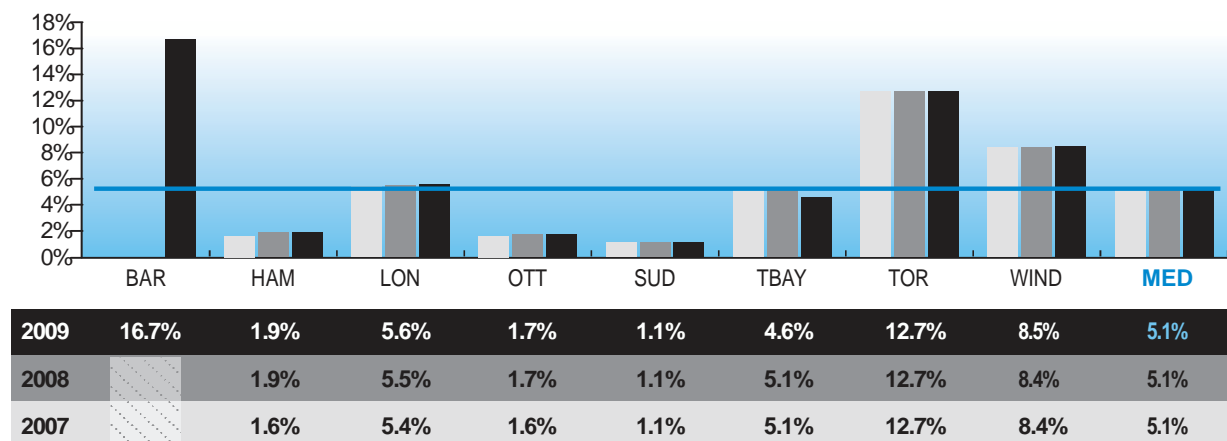
Each municipality's results are influenced to varying degrees by a number of factors including:

- service delivery: differences in service standards established by municipal Councils, i.e. types of amenities maintained, frequency of grass cutting
- geographic location: varying topography affects the mix of natural and maintained hectares of parkland in each municipality
- environmental factors: soil composition, weather patterns
- population density: higher densities may mean more intense usage and require different maintenance strategies, e.g. irrigation, artificial turf, sport field and pathway lighting
- changing demographics and community use: increased demand for large social gatherings and various cultural activities translate into higher maintenance, signage and staff training costs

### What are the results?

#### What percentage of the municipality is parkland?

Fig. 11.1 All Parkland in Municipality as a Percentage of Total Area of Municipality

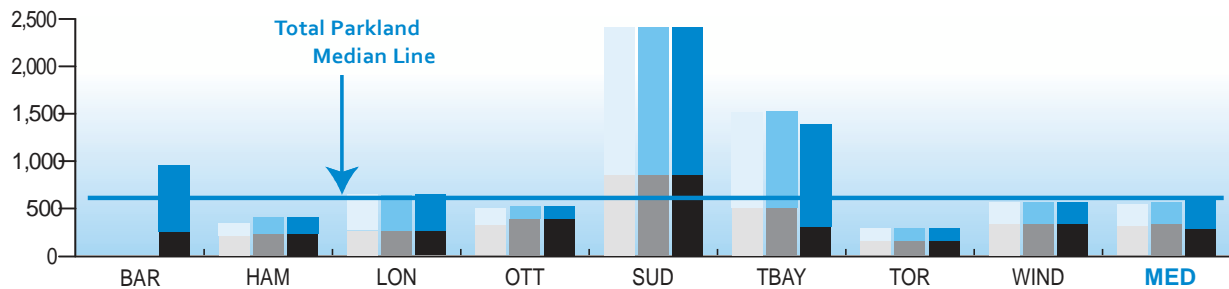


Source: PRKS125 (Community Impact)

Figure 11.1 shows the percentage of the geographic area of the municipality that is maintained or natural parkland. Municipalities with a predominant urban form may find it more difficult to establish new, or expand existing parks within the developed core area.

**How much parkland is available per resident?**

Fig. 11.2 Hectares of Maintained and Natural Parkland per 100,000 Population



Maintained Parkland

2009	254	227	267	396	857	307	158	341	287
2008		230	266	389	857	508	159	342	342
2007		215	265	319	857	508	160	343	319

Source: PRK205S (Service Level)

Natural Parkland

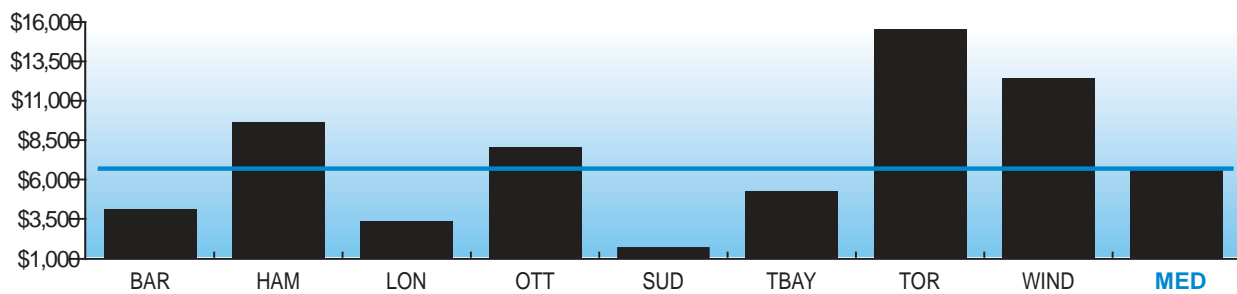
2009	710	177	385	128	1,558	1,082	134	231	308
2008		179	383	134	1,558	1,013	135	226	226
2007		132	380	180	1,558	1,013	132	227	227

Source: PRK5210 (Service Level)

Figure 11.2 illustrates that Sudbury and Thunder Bay have sizable areas of natural parkland which significantly influences the variability in municipalities' results.

**How much does it cost to operate parks per hectare?**

Fig. 11.3 Operating Cost per Hectare – Maintained and Natural Parkland



2009	4,116	9,612	3,348	8,038	1,714	5,270	15,491	12,403	6,654
------	-------	-------	-------	-------	-------	-------	--------	--------	-------

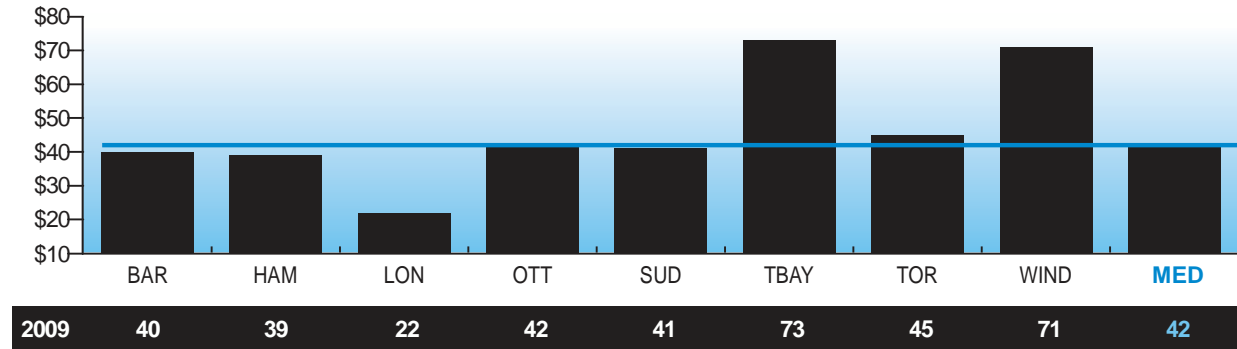
Source: PRK5315 (Efficiency)

Figure 11.3 shows that costs per hectare are reflective of the proportion of maintained parkland versus natural parkland, as maintained parkland is more expensive to maintain. In addition, there are differences in the service standards established by municipal Councils for maintained parks, and the variations in the level of management applied to natural areas in parks in member municipalities.

## PARKS SERVICES

### How much does it cost to operate parks per resident?

Fig. 11.4 Operating Cost of Parks per Person (MPMP)



Source: PRKS23oM (Service Level)