



13. POLICE SERVICES

Under the Ontario Police Services Act, municipalities are responsible for the provision of adequate and effective Police Services to ensure the safety and security of citizens, businesses and visitors. To fulfill this mandate, each municipality and police agency creates and implements strategies, policies and business models that meet the specific needs and priorities of their local communities.

The key objectives provided by Police Services include:

- crime prevention
- law enforcement
- victims' assistance
- maintenance of public order
- emergency response services

What should you consider when reviewing these results?

Each municipality's results are influenced to varying degrees by a number of factors, including:

- non-residents: daily inflow and outflow of commuters and tourists, attendees at cultural, entertainment and sporting events, or seasonal residents (e.g., post-secondary students) who require police services and are not captured in population-based measures
- specialized facilities: airports, casinos, etc. that can require additional policing
- public support: public's willingness to report crimes and to provide information that assists police services in the solving of crimes
- demographic trends: social and economic changes in the population

What are the results?

Twelve of the 14 municipalities reporting data use a municipal police service. Muskoka contracts services from the OPP; and the Region of Peel uses the OPP to service the Town of Caledon (noted as 'CAL' on the graphs), and a municipal police agency serves the remainder of Peel Region.

In 2009, the Canadian Centre for Justice Statistics changed the manner in which they report on the three major crime categories those being violent crime, property crime and other criminal code offences. In order to maintain comparability of crime statistics in this report and to reflect these changes, the comparative results for 2008 and 2007 have been restated where applicable.

The crime severity index has also been included in this report for both total crime and violent crime. This index differs from traditional crime rates as it takes in to account not only the change in volume of a particular crime, but the relative seriousness of that crime in comparison to other crimes, whereas crime rates are simply a count of all criminal incidents reported to the police in relation to the local population.

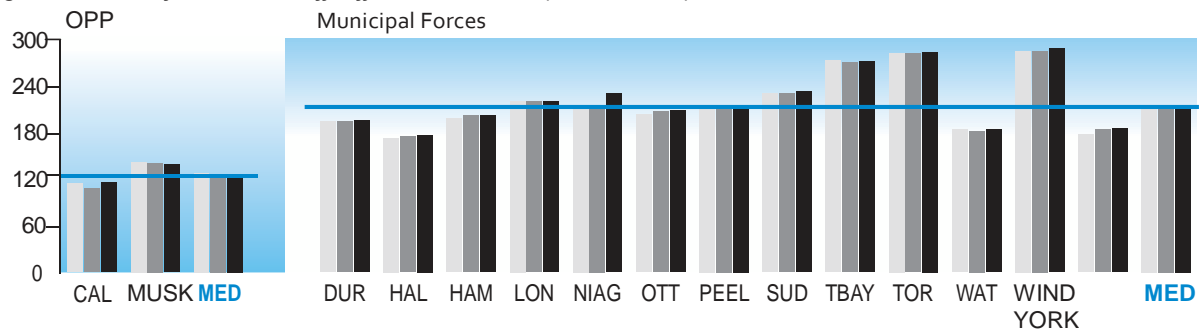
NOTE: Barrie data unavailable for 2009.

NOTE: The Crime rates included in this report may differ from those in Statistics Canada's publications due to the use of more current population estimates provided by the OMBI municipalities.

POLICE SERVICES

How many police officers and civilian staff serve the municipality?

Fig. 13.1 Number of Total Police Staff (Officers and Civilians) per 100,000 Population

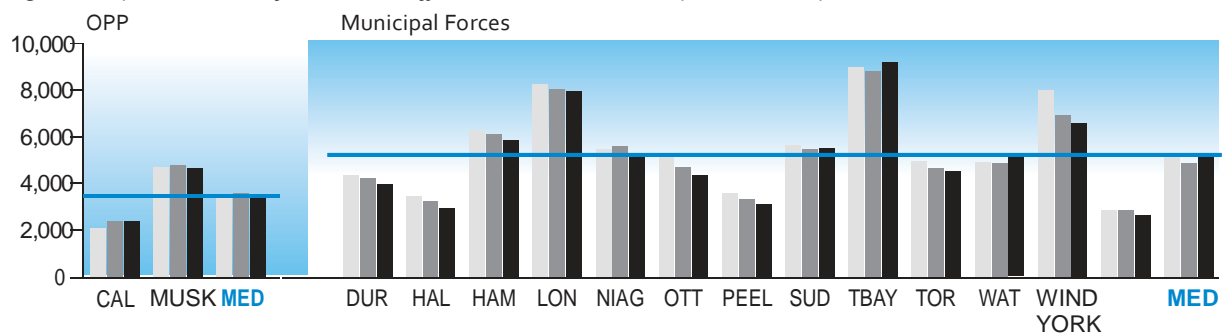


2009	116	139	127	195	177	202	220	230	209	214	233	272	284	184	288	185	214
2008	108	141	124	194	175	202	220	215	207	216	231	270	282	182	285	184	215
2007	114	142	128	194	173	198	221	213	203	213	230	273	283	184	285	178	213

Source: PLCE215 (Service Level)

What is the total crime rate?

Fig. 13.2 Reported Number of Total (Non-Traffic) Criminal Code Incidents per 100,000 Population



2009	2,362	4,660	3,511	3,966	2,954	5,854	7,980	5,271	4,359	3,105	5,521	9,202	4,552	5,279	6,598	2,647	5,271
2008	2,394	4,773	3,583	4,224	3,245	6,125	8,052	5,596	4,695	3,327	5,477	8,819	4,670	4,901	6,907	2,851	4,901
2007	2,058	4,714	3,386	4,344	3,461	6,284	8,242	5,478	5,219	3,578	5,652	9,023	4,986	4,921	7,989	2,842	5,219

Source: PLCE210M (Community Impact)

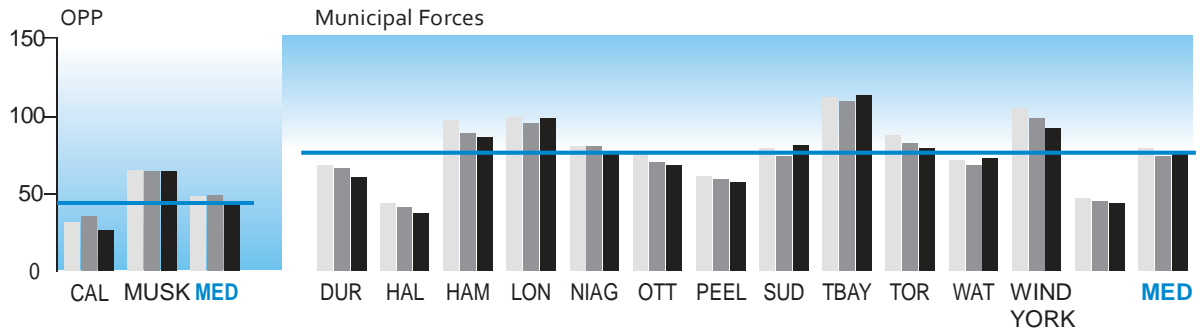
Figure 13.2 includes violent crime, property crime and other non-traffic Criminal Code offences, but excludes Criminal Code driving offences, such as impaired driving or criminal negligence causing death.

Crime rates are used to determine if there have been changes in criminal activity over time. Changes to the law, standards or law enforcement practices can all have an impact on changes in crime rates in any given year.

POLICE SERVICES

What is the total crime severity index?

Fig. 13.3 Total Crime Severity Index



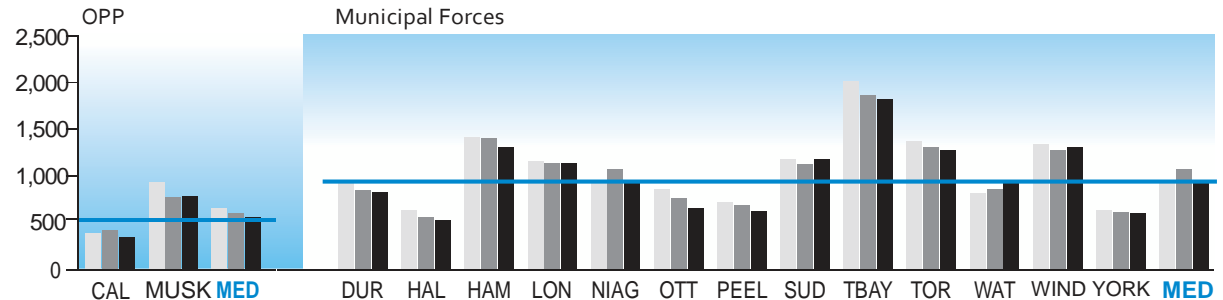
2009	26	64	45	60	37	86	98	76	68	57	81	113	79	73	92	44	76
2008	35	64	49	66	41	89	95	80	70	59	74	109	82	68	98	45	74
2007	31	65	48	68	44	97	99	80	77	61	79	112	87	71	105	47	79

Source: PLCE18o (Community Impact)

Figure 13.3 identifies the crime severity index which takes into account not only the change in volume of a particular crime but the relative seriousness of that crime in comparison to other crimes.

What is the violent crime rate?

Fig. 13.4 Reported Number of Violent – Criminal Code Incidents per 100,000 Population



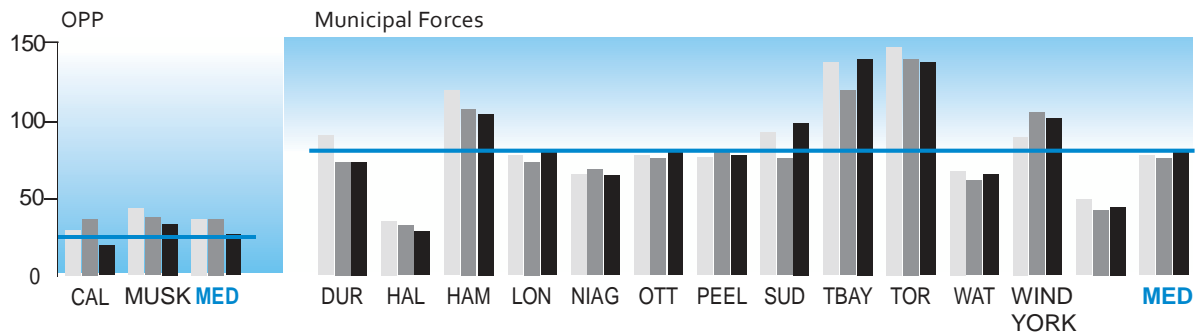
2009	332	779	556	824	517	1,301	1,130	937	648	612	1,172	1,823	1,271	928	1,308	596	937
2008	408	768	588	838	551	1,400	1,137	1,065	759	676	1,123	1,864	1,306	853	1,274	610	1,065
2007	382	926	654	951	632	1,413	1,148	955	848	717	1,173	2,009	1,363	804	1,334	632	955

Source: PLCE105M (Community Impact)

Figure 13.4 shows the violent crime rate. This category has been expanded to also include criminal harassment, sexual offences against children, forcible confinement or kidnapping, extortion, uttering threats, threatening or harassing phone calls. These crimes were previously reported as Other Criminal Code offences.

What is the violent crime severity index?

Fig. 13.5 Violent Crime Severity Index

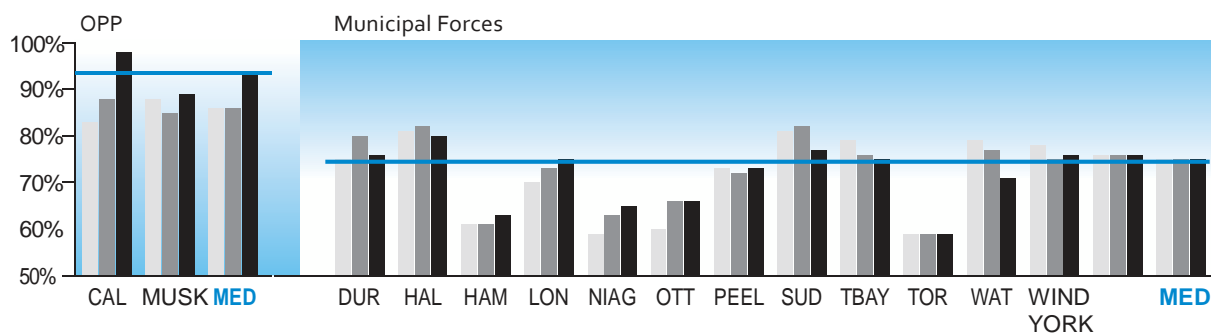


2009	19	33	26	73	28	104	81	64	80	77	98	139	137	65	101	44	80
2008	36	37	36	73	32	107	73	68	75	79	75	119	139	61	105	42	75
2007	29	43	36	90	35	119	77	65	77	76	92	137	147	67	89	49	77

Source: PLCE170 (Community Impact)

What percentage of violent crime is solved?

Fig. 13.6 Clearance Rate - Violent Crime



2009	98%	89%	94%	76%	80%	63%	75%	65%	66%	73%	77%	75%	59%	71%	76%	76%	75%
2008	88%	85%	86%	80%	82%	61%	73%	63%	66%	72%	82%	76%	59%	77%	75%	76%	75%
2007	83%	88%	86%	75%	81%	61%	70%	59%	60%	73%	81%	79%	59%	79%	78%	76%	75%

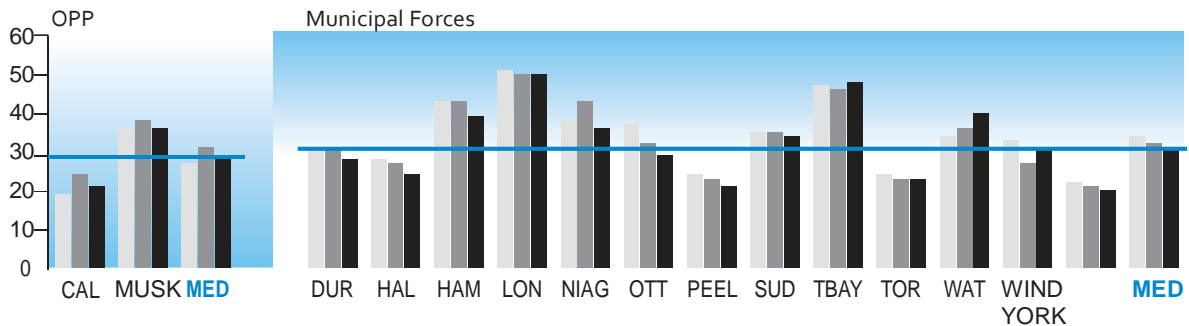
Source PLCE405 (Customer Service)

Figure 13.6 shows the results for the number of violent crimes cleared in a specific calendar year, regardless of when the crimes occurred. A violent criminal incident is considered cleared when a charge is laid, recommended or cleared by other methods.

POLICE SERVICES

How many criminal code incidents (non-traffic) does each police officer handle?

Fig. 13.7 Number of Criminal Code Incidents (Non-Traffic) per Police Officer



2009	21	36	29	28	24	39	50	36	29	21	34	48	23	40	31	20	31
2008	24	38	31	31	27	43	50	43	32	23	35	46	23	36	27	21	32
2007	19	36	27	31	28	43	51	38	37	24	35	47	24	34	33	22	34

Source: PLCE205 (Efficiency)

Figure 13.7 reflects the number of reported Criminal Code (non-traffic) incidents there were in each municipality per police officer.

This provides an indication of an officer's workload but it is important to note that it does not capture all of the reactive aspects of policing, such as traffic and drug enforcement, nor does it incorporate proactive policing activities such as crime prevention initiatives or the provision of assistance to victims of crime.

A number of factors can affect these results, including the existence of specialized units or the use of different models to organize officers in a community. For example, some jurisdictions have a collective agreement requirement that results in a minimum of two officers per patrol cars during certain time periods. In these cases, there could be two officers responding to a criminal incident whereas in another jurisdiction only one officer might respond.