



17. SPORTS AND RECREATION SERVICES

Sports and Recreation Services delivers quality programs and maintains facilities in order to enhance quality of life and promote a healthier and active citizen. It is a developer of citizen and community participation.

The three main types of programming are:

- registered programs: residents register/commit to participate in structured activities such as swimming lessons, dance or fitness classes or day camps; some municipalities also include house leagues, e.g. baseball, basketball, hockey, soccer
- drop-in programs: residents are not required to register and are able to participate in structured or unstructured sports and recreation activities such as public swimming or skating, basketball, fitness or open access to gyms
- permitted programs: residents and/or community organizations obtain permits for short-term rental of sports and recreation facilities such as sports fields, meeting rooms and arenas

What should you consider when reviewing the results?

Each municipality's results are influenced to varying degrees by a number of factors, including:

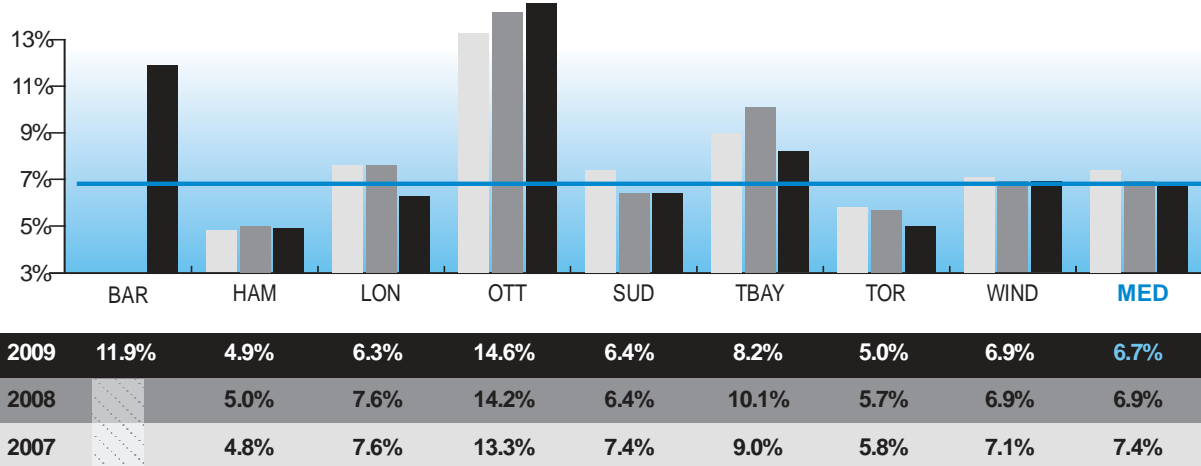
- recreation facilities: number of facilities, mix of facility types and age of facilities
- programming: variety of recreation program types offered, number and extent of age groups with targeted programming; frequency and times of program offerings; class length; mix of instructional vs. drop-in vs. permitted programming
- transportation: access and the number of program locations
- collective agreements: differences in wage rates and staffing structures
- socio-economic: needs of different ethnic groups within the community; changes in legislation, such as the impact of Accessibility for Ontarians with Disabilities Act (AODA) on the cost of providing service; accessibility
- utilization rates: user fees influence the decisions of residents to register and how often; availability of qualified and trained staff can impact program offerings

SPORTS AND RECREATION SERVICES

What are the results?

What percentage of the municipal population participates in registered programs?

Fig. 17.1 Annual Number of Unique Users for Directly Provided Registered Programs as a Percentage of Population



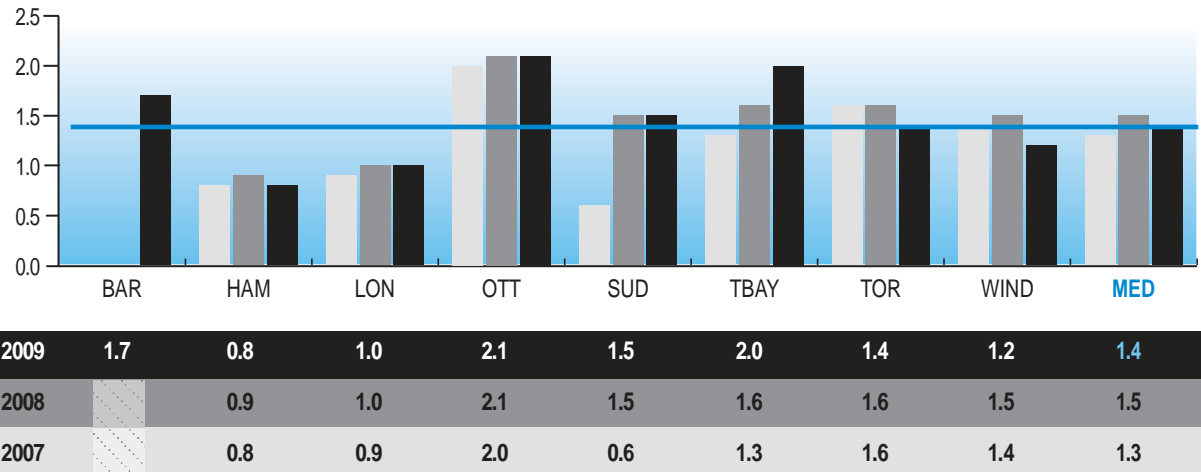
Source: SREC140 (Community Impact)

NOTE: A unique user refers to anyone who has registered for one or more programs but is counted only once vs. per visit or use.

Figure 17.1 identifies what proportion of the municipality's population took part in directly-provided registered recreation programs (such as Learn to Skate, Summer Camp, Arts & Crafts). Individuals who registered for more than one program are counted only once; therefore, this graph represents "unique users". The number of unique users does not include those who participate in municipal drop-in recreation, permit based opportunities, or programming options provided by alternate sports and recreation service providers (such as YMCA, private clubs, etc).

How frequently are registered programs being used?

Fig. 17.2 Number of Participant Visits per Capita – Directly Provided Registered Programs

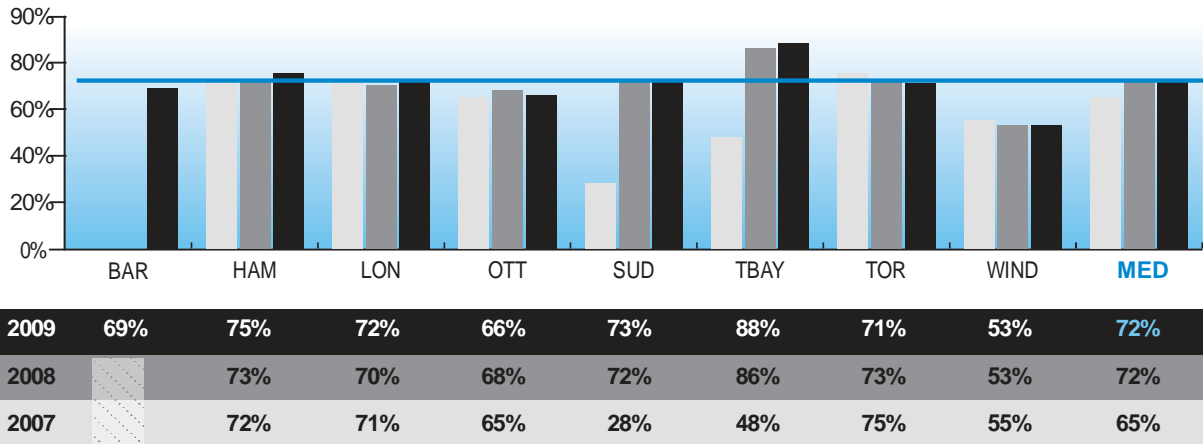


Source: SREC110 (Community Impact)

SPORTS AND RECREATION SERVICES

What percentage of registered program capacity is used?

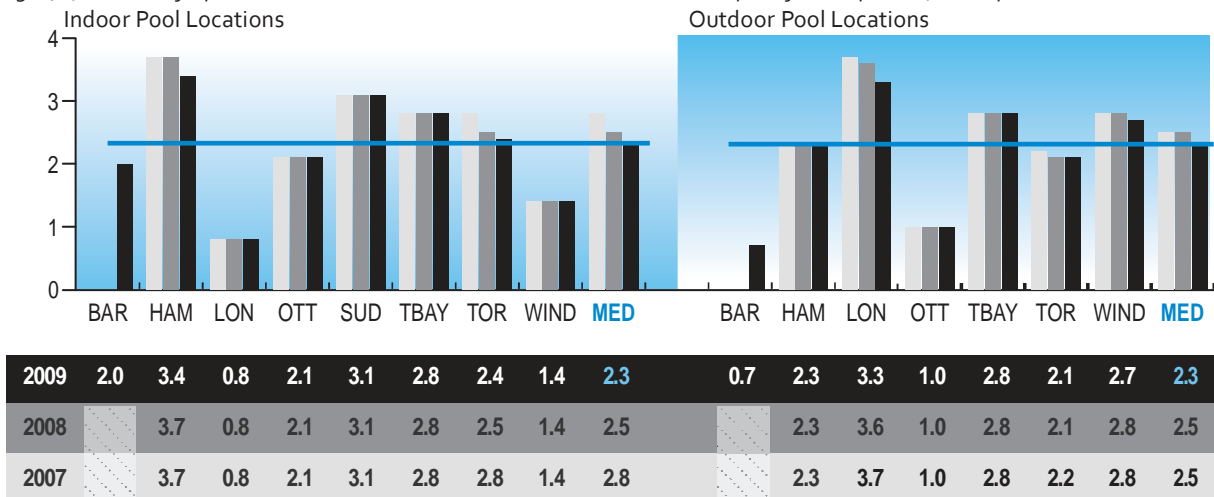
Fig. 17.3 Utilization Rate for Directly Provided Registered Programs



Source: SREC410 (Customer Service)

What is the number of indoor/outdoor pool locations with municipal influence?

Fig. 17.4 Number of Operational Indoor and Outdoor Pool Locations with Municipal Influence per 100,000 Population



Source: SREC232, SREC233 (Service Level)

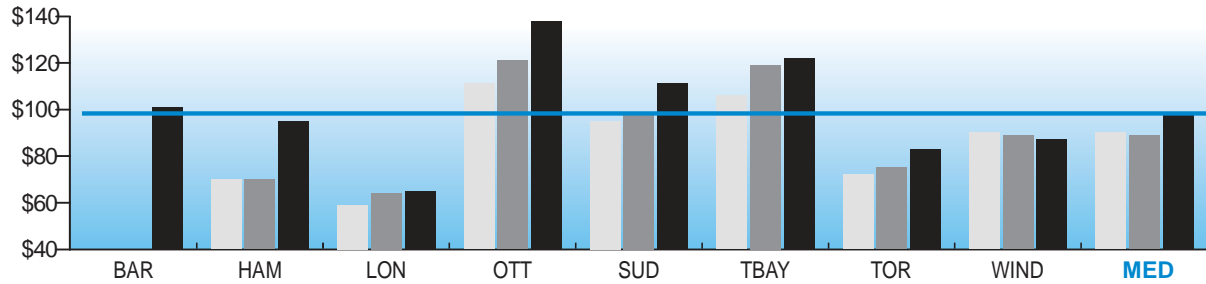
NOTE: Sudbury does not own or operate outdoor pools.

Figure 17.4 shows the number of operational, indoor and outdoor pool locations per 100,000 population where the municipality may own, operate, and/or lease facilities to allow for provision of aquatic programs. This graph does not account for other locations operated by other service providers.

SPORTS AND RECREATION SERVICES

How much does it cost to provide recreational facilities and programs per person?

Fig. 17.5 Operating Cost of Recreation Programs & Facilities per Person (MPMP)



2009	101	95	65	138	111	122	83	87	98
2008		70	64	121	98	119	75	89	89
2007		70	59	111	95	106	72	90	90

Source: SREC909M (Efficiency)

Figure 17.5 shows the average cost per person to operate recreation programs and facilities operated by the municipality. The cost is impacted by the difference in service levels established by municipal council, differences in programming mix provided by member municipalities, and the number and types of recreation facilities in each municipality.