



25. INVESTMENT MANAGEMENT SERVICES

Investment Management Services implements short and long term investment strategies for money market, bond and equity portfolios in accordance with provincial government legislation and the municipality's own investment policies.

What should you consider when reviewing these results?

Each municipality's results are influenced to varying degrees by a number of factors, including:

- asset mix: types of different investment vehicles
- availability of product
- amount of funds under investment
- cash inflows and outflows: is new cash being added or is the portfolio shrinking
- type of investment management: in house vs. the use of external managers and brokers
- strategies employed: active vs. passive

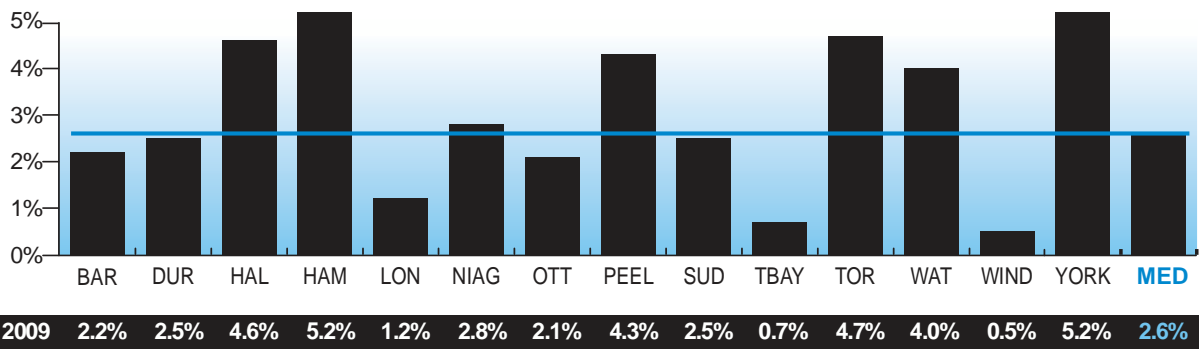
NOTE: Muskoka data unavailable.

NOTE: All measures reported are new for 2009, therefore there are no comparatives.

What are the results?

What is the internal investment yield?

Fig. 25.1 Gross Percentage Return on the Internal Investment Portfolio (based on the average adjusted book value)

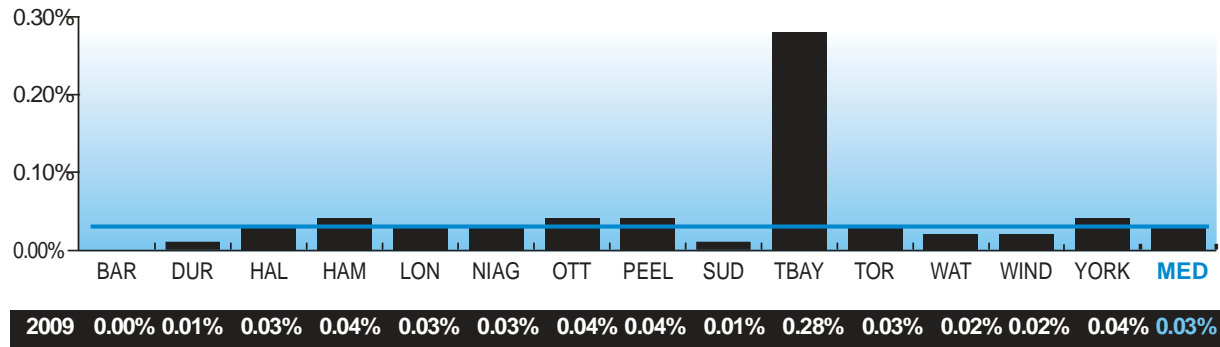


Source INV₃₁₂ (Efficiency)

INVESTMENT MANAGEMENT SERVICES

What is the proportion of cost to income for internally managed portfolio?

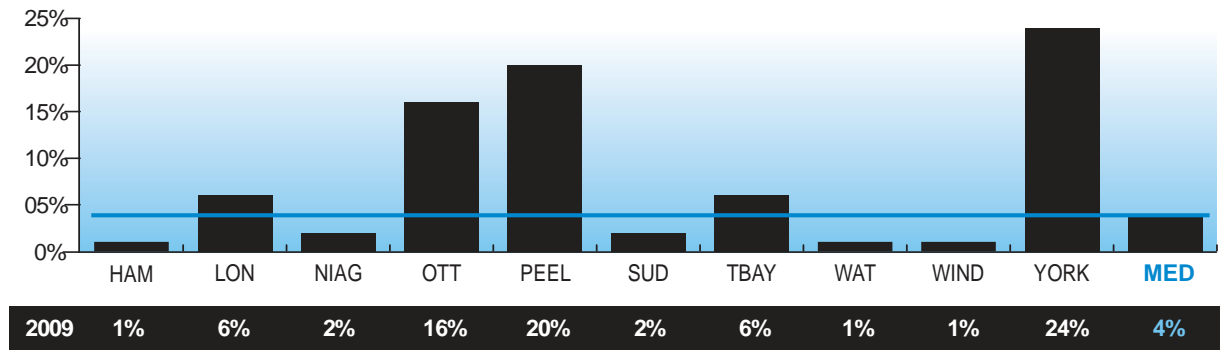
Fig. 25.2 Internal MER (Management Expense Ratio)



Source: INVT₃₂₂ (Efficiency)

What is the external investment yield?

Fig. 25.3 Gross Percentage Return on External Investment Portfolio (based on average adjusted book value)

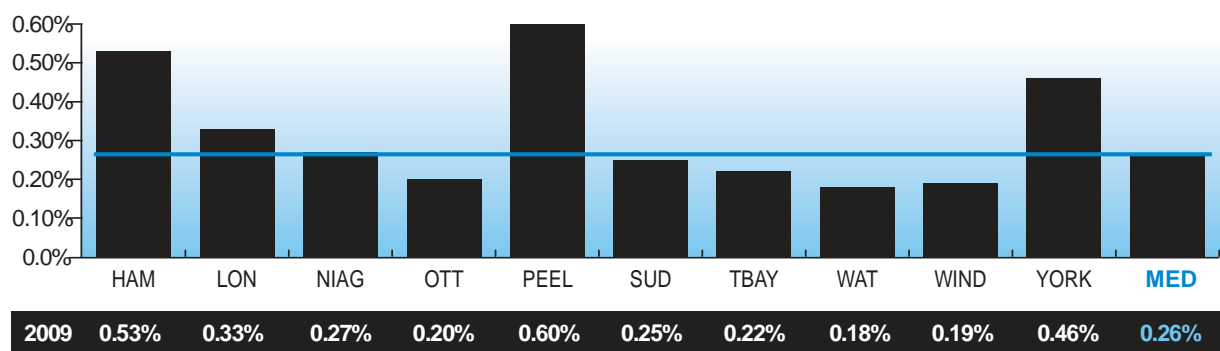


Source: INVT₃₁₄ (Efficiency)

NOTE: Barrie, Durham, Halton and Toronto do not have externally managed portfolios.

What is the proportion of cost to income for externally managed portfolio?

Fig. 25.4 External MER (Management Expense Ratio)



Source: INVT₃₂₄ (Efficiency)