



3. CHILD CARE SERVICES

Municipal Children’s Services divisions plan and manage their local child care system, focusing on the integration of government initiatives, inter-agency coordination and the development of quality programs and services for children and their families.

Municipalities are mandated by provincial legislation under the Day Nursery Act to plan, direct and deliver child care services. Objectives of child care services include:

- providing a continuum of quality community-based services accessible to children, their families and caregivers
- fostering partnerships with the community in planning and service delivery to ensure equitable access to high quality child care for children and support for families
- providing financial support to eligible families to enable them to participate fully in employment, training and developmental opportunities
- innovating and building on leading practices

What should you consider when reviewing these results?

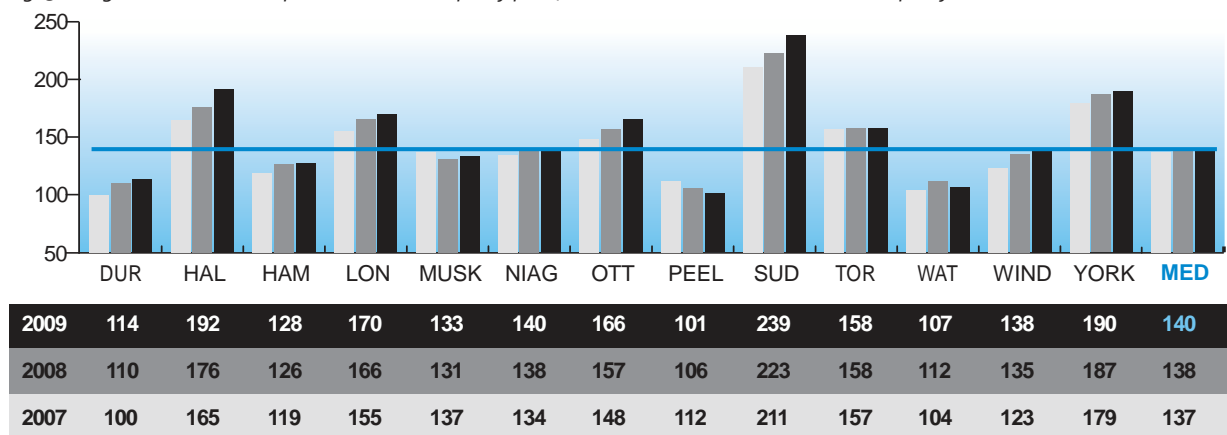
Each municipality’s results are influenced to varying degrees by a number of factors, including:

- varying levels of child poverty in municipalities results in differing needs for subsidized child care
- cost to provide child care can be impacted by economic variables such as the cost of living in the municipality and the income levels of its residents
- rates for child care spaces other than those directly operated by a municipality are set in service agreements between the municipality and the child care service providers; these rates can be influenced by the level of funding available, local wage conditions, pay equity legislation, municipal policies and business practices

What are the results?

How many regulated child care spaces are available?

Fig. 3.1 Regulated Child Care Spaces in the Municipality per 1,000 Children (12 and under) in Municipality



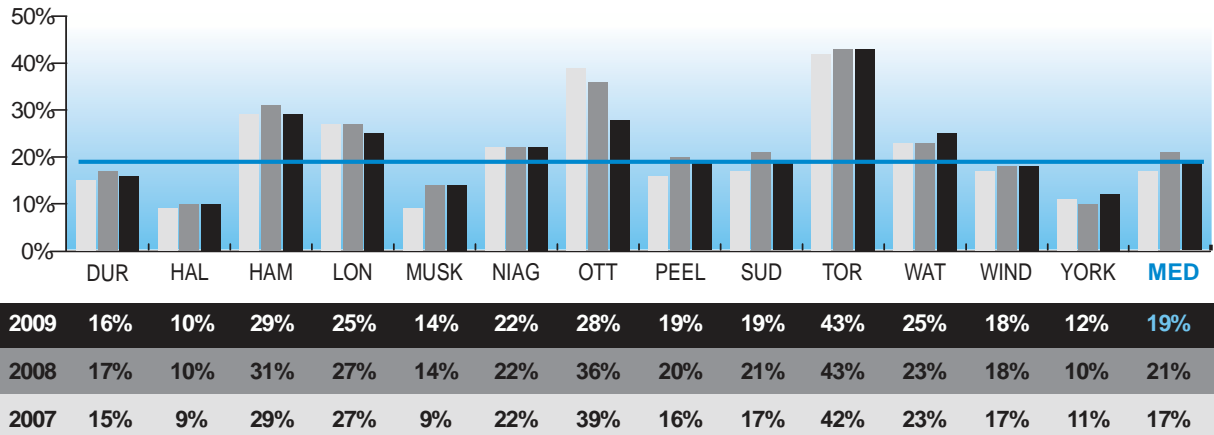
Source: CHDC105 (Community Impact)

Figure 3.1 shows the number of licensed spaces in the municipality per 1,000 children 12 and under. The number of regulated child care spaces increased marginally for most municipalities over the past two years. The provincial decision to move to full day junior and senior kindergarten will impact future results.

CHILD CARE SERVICES

What percentage of available spaces is subsidized?

Fig. 3.2 Percentage of Spaces that are Subsidized

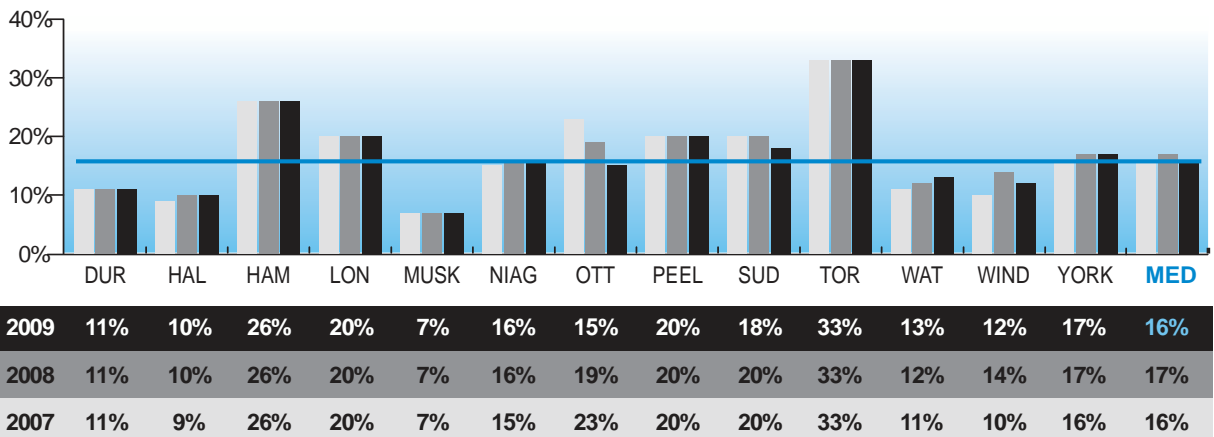


Source: CHDC112 (Community Impact)

Fig. 3.2 illustrates that high demand in Toronto can be indicative of the number of lower income families requiring child care (refer to figure 3.3 for more information).

What percentage of children come from low-income families?

Fig. 3.3 Percentage of Children (12 and under) from Low-income Families



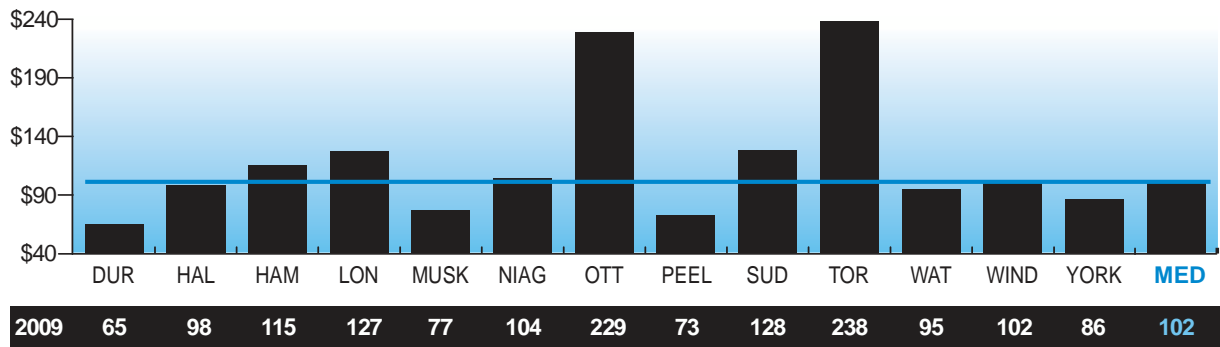
Source CHDC115 (Community Impact)

Figure 3.3 illustrates that lower-income families tend to drive the demand for subsidized spaces for children 12 and under in the municipality.

CHILD CARE SERVICES

What is the investment per child in the municipality?

Fig. 3.4 Net Operating Cost per Child (12 and under) in the Municipality

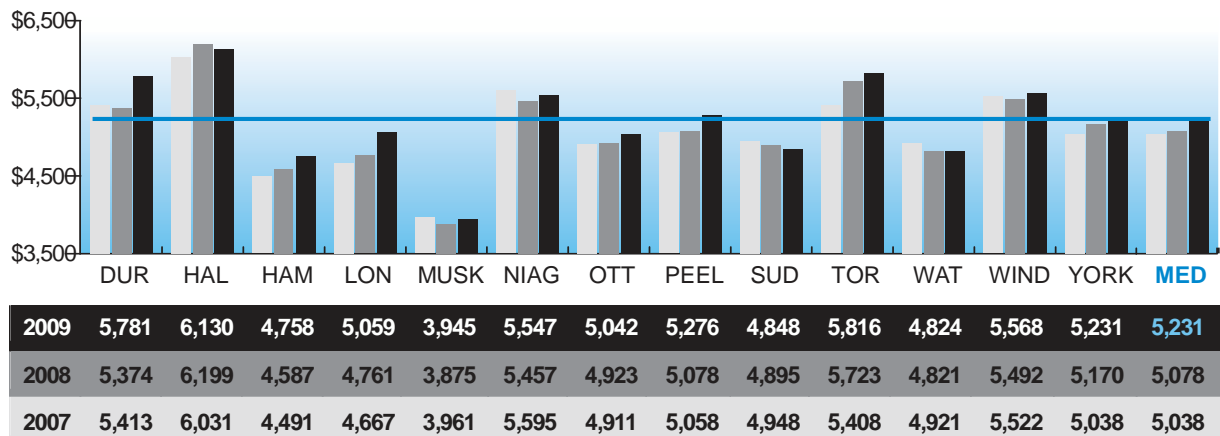


Source: CHDC225 (Service Level)

Figure 3.4 illustrates the amount of municipal funding that is going into the child care system. While a majority of the funding is from the province, municipalities can spend 100% funds to provide services.

How much does a subsidized child care space cost?

Fig. 3.5 Annual Gross Fee Subsidy Cost per Normalized Subsidized Child Care Space



Source: CHDC305 (Efficiency)

Figure 3.5 shows the annual gross fee subsidy cost and has been normalized to reflect the mix of age groups and required staff ratios. A high cost result could reflect a higher percentage of spaces being directly operated by the municipality with higher wages or the higher cost of care in large urban cities.