

ROPSU Transportation

Region of Peel Official Plan Strategic Update

Message From the Director of Transportation Planning

Transportation plays a vital role in supporting the quality of life we experience in Peel.

Transportation planning initiatives that were undertaken through Regional Official Plan

Strategic Update (ROPSU) are an important step toward building an efficient and effective transportation system that supports a strong and growing economy, manages impacts on the environment and gives us

mobility choices to meet the diverse needs of our residents and businesses.

This bulletin serves to highlight transportation planning achievements under ROPSU. □



Tom AppaRao,
 Director of Transportation Planning



1.0 Background

In November 2002, Regional Council approved the ROPSU transportation planning focus area work plan that outlined 5 major planning studies. The underlying goal of these studies was to identify and address a range of current and long-term transportation issues in Peel in a comprehensive and timely manner.

Conclusions and recommendations from the following four studies guided the development of the fifth—a

Long Range Transportation Plan (LRTP) for Peel:

- Goods Movement Study for Peel
- Caledon Transportation Needs Study
- Transportation Demand Management Study
- Transportation for Persons with Disabilities Study

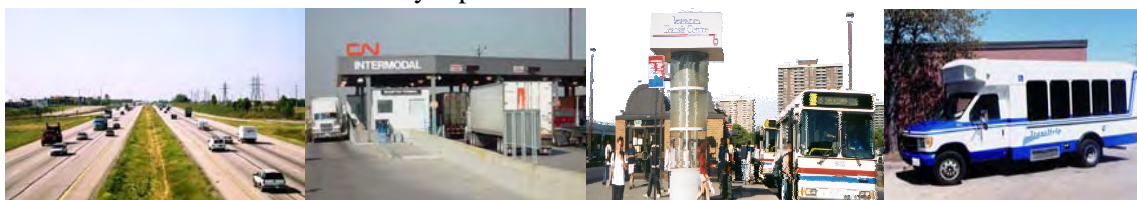
Stakeholders were engaged in the development and review of these studies and Regional Council endorsed the four study reports.

The culminating outcome of these initiatives was to update the Regional Official Plan (ROP) to provide policy direction for the implementation of the LRTP.

A formal public meeting was held on June 16, 2005 for the public and stakeholders to review and comment on draft ROPA 16. This was followed by Regional Council adoption of ROPA 16 on September 15, 2005.

Inside this bulletin:

- 1.0 Background **Pg. 1**
- 2.0 Long Range Transportation Projects **Pg. 2 & Pg. 3**
- 3.0 Consultation Events **Pg. 4**





A Cycling Trail

2.0 Long Range Transportation Projects

The five planning studies that comprise the LRTP initiative under ROPSU are discussed in this section.

Each study was led by Peel Region Planning Department and conducted in collaboration with area municipal staff. Further all studies included extensive consultation with stakeholders. A summary of highlights is provided in Section 3, Page 4.

Transportation for Persons with Disabilities Study

The purpose of this study was to:

- investigate the travel needs of persons with disabilities;
- assess the adequacy of existing transportation services for persons with disabilities;
- identify policies to support better transportation services for persons with disabilities; and
- provide a recommended plan to deliver the preferred strategy.

Key policy recommendations that emerged from this study include:

1. encouraging Area Municipalities and GO Transit to introduce transit accessibility improvements;
2. supporting increased coordination of accessible transit services; and
3. reviewing TransHelp eligibility criteria.

To accommodate anticipated future demand, the study suggests the Region should provide “family of services”, including commercial taxi services and co-ordination with other agencies, while fully optimizing Mississauga Transit’s and Brampton Transit’s ongoing capital investments and service upgrades related to conventional accessible transit services.

Transportation Demand Management Study

Transportation Demand Management (TDM) focuses on reducing traffic congestion by reducing our dependence on the car, as building new or widening existing arterial roads may not be feasible or desirable

in the future. TDM strategies aim to maximize the use of existing transportation infrastructure by:

- increasing the number of people per vehicle (including transit vehicles, vanpools and carpools);
- maximizing the use of underutilized travel times and travel routes, including transit routes and pedestrian/bicycle paths; and
- reducing trip frequency and distance and eliminating some trips altogether.

Recognizing the complex challenge of better managing transportation demand in Peel, the study suggests the following strategies as a starting point:

- Coordinate with the public and private sectors to promote a safe and sustainable transportation system.
- Encourage land uses and site design that foster increased use of transit, van/car pooling, and active transportation.
- Work with Area Municipalities and the private sector to promote and implement TDM strategies.

These strategies will defer or eliminate the need to make costly road and parking capacity upgrades, reduce emission pollutants, and help stimulate demand for sustainable transportation alternatives.

Coordination of these strategies with Area Municipalities and other transportation stakeholders is critical for the successful implementation of TDM.



Commuter Train Station



Transhelp

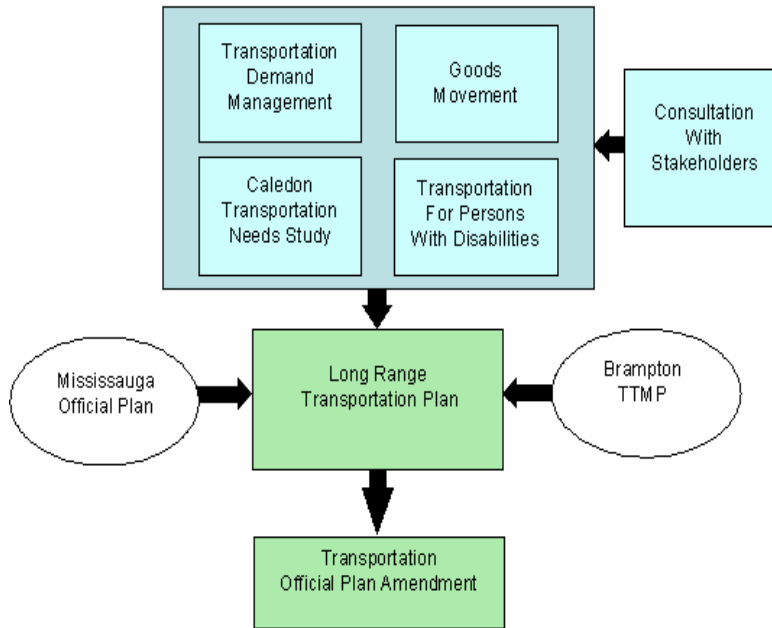


Transportation Demand Management

Service trends, policy options and the current level of service provision were assessed in the context of user demands, an aging and increasingly culturally diverse population, available resources and relevant legislation, including the *Ontarians with Disabilities Act*.

L RTP Study

Overview and Components



Study of Goods Movement in Peel

The purpose of this study was to identify strategic issues related to goods movement in Peel and to recommend directions for improvement through new policy implementation.

Efficient goods movement is critical for industrial, warehousing, distribution and manufacturing activity in Peel, particularly since these activities are so important to the economic base of the Region and beyond.

Among the study findings is:

- a looming concern about increasing traffic congestion at certain major intersections, roads, and highways in Peel and at major

- shipping facilities.
- a need to gather data about the movement of goods within the Region to help develop a goods movement action plan.
- A need for increased communication, collaboration and partnerships among goods movement stakeholders that will lead to better collective transportation decisions.

Caledon Transportation Needs Study

Undertaken jointly by the Region of Peel and the Town of Caledon, this study identified current and future transportation demands in Caledon and the transportation improvements required to accommodate these demands. The study suggested a framework

against which the impact of future land use and transportation proposals for Caledon can be considered.

To accommodate forecasted population-based demand for transportation infrastructure to and within Caledon, the study proposes:

- improvements to arterial roads and expansion of provincial highway capacity in the area;
- possible provision of transit services for Bolton and Mayfield West in the future;
- implementing traffic calming features; and
- implementing TDM initiatives to reduce dependence on personal vehicles.

Long Range Transportation Plan

The LRTP builds upon current transportation projects and studies completed by the Region of Peel and those of the area municipalities, surrounding regions and the Province. It will guide decision making concerning investment in transportation infrastructure over the next 30 years. Policy elements of the plan support the Regional Official Plan Amendment (Number 16) which is currently before Regional Council.

Specifically, the Plan:

- describes a Vision and Goals to improve transportation in Peel;
- outlines Regional road

improvements required to 2031; and

- outlines Provincial highway and GO Transit improvements required to meet Peel's future needs.



Goods Movement in Peel



Road Congestion

3.0 Consultation and Stakeholder Workshops

A variety of consultation activities for each transportation study, including stakeholder workshops, were arranged to ensure public interests were considered in all Long Range Transportation Planning Initiatives to guide the development of policies and actions that respond to the interests and needs of stakeholders. Key activities for each study are highlighted in this section.

Transportation Demand Management Study Workshop, July 11, 2003

Private sector involvement in the implementation of TDM programs is considered a crucial success factor. Representatives of the private sector were invited to participate in a workshop to provide input on measures being considered for Peel and to discuss ways of collaborating on the implementation of these initiatives. The workshop was hosted by Nortel Networks in Brampton.

About sixty participants attended including developers, property management companies and regional and local

staff and Councillors. Participants were favourable to the ideas presented and encouraged the development and implementation of TDM policies and supporting strategies through a coordinated effort among the Region and Area Municipalities, the Province, major employers and other stakeholders.

Study of Transportation for Persons with Disabilities

The interests and expectations of users and managers of Peel's existing transportation system and services for persons with disabilities were extremely important considerations in this study.

Stakeholder input was collected through a detailed interview survey of 18 organizations that provide transportation services to people with specific needs, and a focus group meeting attended by representatives of 27 organizations.

This input informed the development of a recommended plan for improving transportation

service delivery to people with disabilities in Peel.

Goods Movement in Peel Forum, November 5, 2003

A forum on goods movement in Peel was convened to discuss preliminary study findings and to receive comments and feedback for Peel's strategic planning actions for goods movement.

The forum was attended by more than 50 participants representing freight industry leaders from both the private and public sectors. The majority of the participants expressed the need for the Region to provide leadership on issues and actions related to goods movement.

Caledon Transportation Needs Study

Sixteen community stakeholder groups were consulted during the development of this study and 17 individuals attended a stakeholder meeting convened to identify issues the study should consider.

Stakeholder responses were reviewed and reflected in the final study report.



Transportation Division

LRTP & Draft Transportation ROPA Workshop, June 2, 2005

A workshop was held to receive comments from and build relationships with key stakeholders on the draft LRTP and the draft ROPA 16. Over 30 participants attended, including representatives of the business sector, transportation companies (rail, trucking, warehousing and logistics), area municipalities, environmental organizations and public sector agencies.

LRTP & Draft Transportation ROPA 16 Public Meeting, June 16, 2005

The public was invited to review and comment on draft Transportation ROPA 16 and the draft LRTP at a formal public meeting. Written comments were received. The public meeting was followed by Council adoption of the LRTP and ROPA 16 on September 15, 2005.