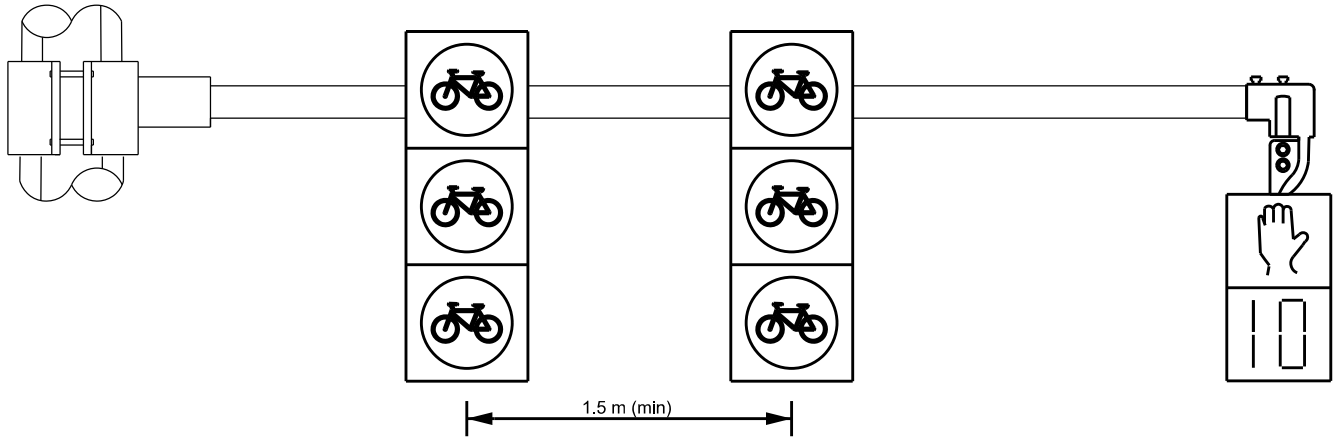


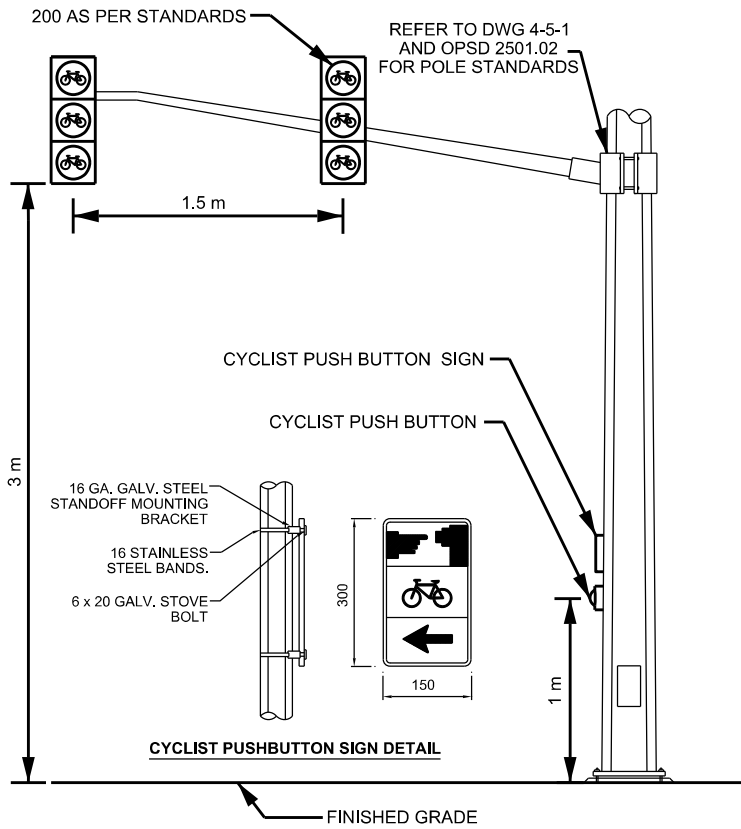
ALTERNATE OPTION WITH ADDITIONAL PEDESTRIAN CROSSING



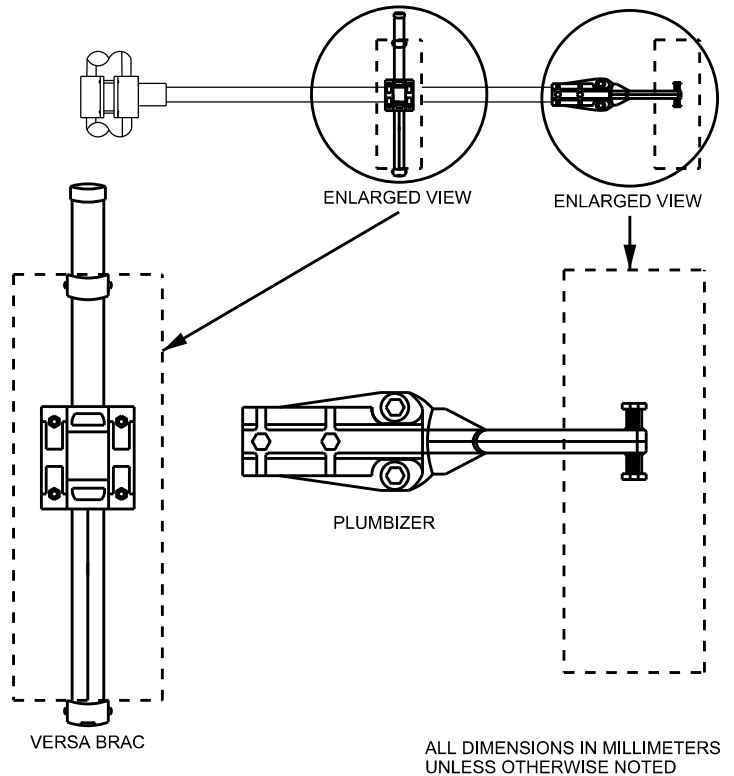
NOTE:

- 1) OFFSET BASED ON 3 m CROSSWALK AND 3 m CROSSRIDE WITH 0.4 m ELEPHANT FEET
- 2) VERSA BRAC WIRING APERTURE ENTRY POINT SHALL BE AT THE BOTTOM OF THE ARM
- 3) WIRING SHALL HAVE APPROPRIATE DRIP
- 4) PEDESTRIAN HEAD SHALL BE ALIGNED TO THE MIDDLE OF THE CROSSWALK

FRONT VIEW



BACK VIEW



**PUBLIC WORKS
STANDARD DRAWING**

REV. DATE: DECEMBER 2018

APPROVED BY

DRAWN BY

GK

TSS SECTION

STD. DWG. NUMBER

SCALE

4-5-2

N.T.S.

**TYPICAL BIKE SIGNAL
EQUIPMENT MOUNTING DETAIL
ON STEEL POLES**