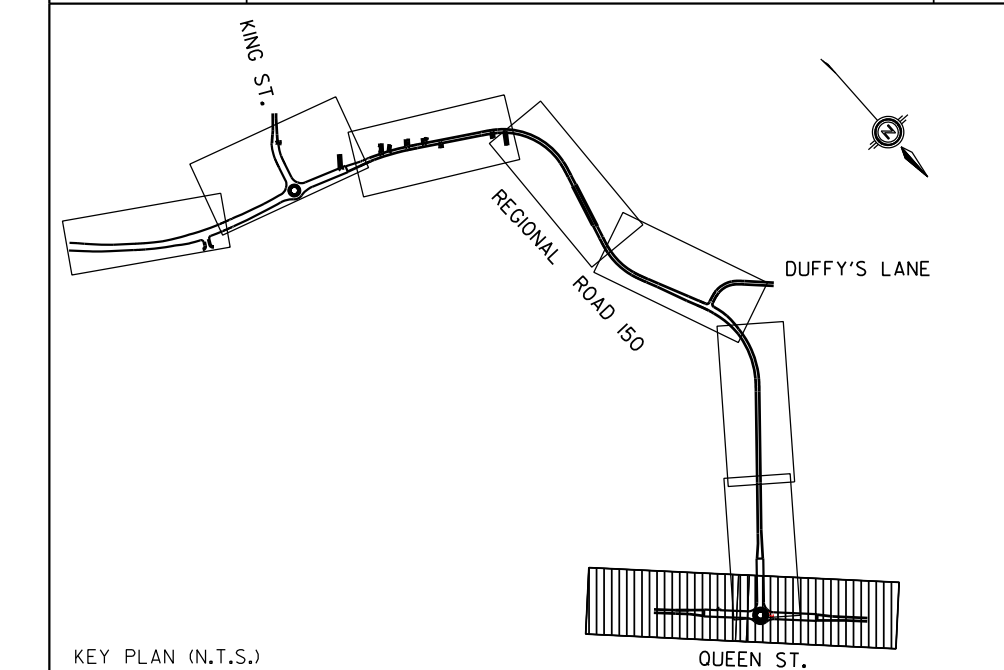




SERVICE DATA					
SERVICE	DATE	INIT.	SERVICE	DATE	INIT.
SAN SEWERS			GAS MAINS		
STORM SEWERS			BELL U/G CABLE		
WATERMANS			HYDRO U/G CABLE		
TRANSIT			HYDRO ONE		
PARKS & REC.			CITY COMMUNIC. CABLES		
ONT. CLEAN WATER					



General Notes

- All Driveways ASPHALT Unless Otherwise Noted.
- All Service Locations Are Approximate And Must Be Located Accurately In The Field
- ⊙ Denotes Building - Not Located
- ⊙ Denotes Building Located
- ⊙ Type 'B' Bedding Unless Otherwise Noted (SAN)

B.M. No. Elev.

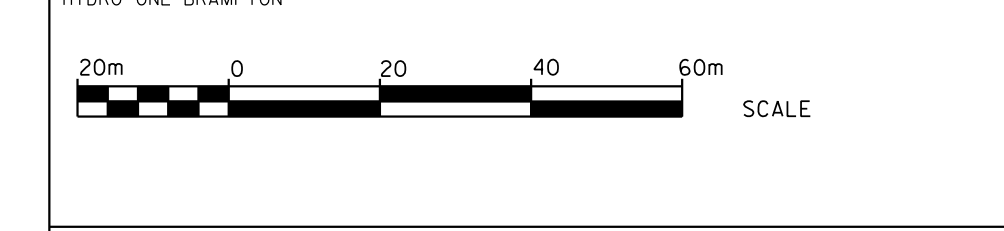
The Contractor Is Responsible For Locating And Protecting All Existing Utilities Prior To And During Construction Location Of Existing Utilities Approximate Only, To Be Verified In Field By Contractor.

Giffels Associates Limited
 Consulting Engineers and Architects
 An IBI Group Company

Designed by _____ Chkd. _____
 Approved by _____

NOTICE TO CONTRACTOR
 48 HOURS PRIOR TO COMMENCING WORK NOTIFY THE FOLLOWING

THE REGIONAL MUNICIPALITY OF PEEL	CABLE TELEVISION/FIBROPTIC PROVIDERS:
CITY OF MISSISSAUGA WORKS DEPT.	BELL CANADA
CITY OF BRAMPTON WORKS DEPT.	ENERSOURCE TELECOM
TOWN OF CALEDON WORKS DEPT.	HYDRO ONE TELECOM
BELL CANADA	ROGERS CABLE
ENBRIDGE INCORPORATED-GAS DISTRIBUTION	ALLSTREAM
ONTARIO MINISTRY OF TRANSPORTATION	PSN (PUBLIC SECTOR NETWORK)
ONTARIO CLEAN WATER AGENCY	FUTUREWAY (FCI/BROADBAND)
HYDRO ONE NETWORKS	
ENERSOURCE, HYDRO MISSISSAUGA	
HYDRO ONE BRAMPTON	



Region of Peel
 Working for you

REGIONAL ROAD 150
 (FROM KING STREET TO QUEEN STREET)
 PLAN

STA. 4+860 TO STA. 5+340	
CAD Area	Area Z-8
Checked by	Drawn by X.Y
Date Feb, 2010	Sheet 5 of 5
Project No. 04-1310	Plan No. -D

2/24/2010 USER:rsr\pnr\okh\sub\hmr\in\1\481000006 - RR150_TMS_1500-deliv\pic\1\RR150_cnc05.dgn