



**Cultural Heritage Assessment Report:
Built Heritage Resources and Cultural Heritage Landscapes**

**Zone 6 Reservoir and Feedermain
Class Environmental Assessment,
Regional Municipality of Peel, Ontario**

EXISTING CONDITIONS

Submitted to

Trow Associates Inc.
1595 Clark Boulevard
Brampton, Ontario L6T 4V1
Tel: (905) 793-9800
Fax: (905) 793-0641

Prepared by

Archaeological Services Inc.
528 Bathurst Street
Toronto, Ontario M5S 2P9
Tel.: 416-966-1069
Fax: 416-966-9723
Email: info@iasi.to
Website: www.iasi.to

ASI File 08EA-119

June 2009



Archaeological Services Inc.

528 Bathurst St.
Toronto, Ontario
Canada, M5S 2P9

T 416-966-1069
F 416-966-9723
info@iasi.to/www.iasi.to

ARCHAEOLOGICAL SERVICES INC.
ENVIRONMENTAL ASSESSMENT DIVISION

PROJECT PERSONNEL

<i>Senior Project Manager:</i>	Robert Pihl, MA, CAHP Partner and Senior Archaeologist, Manager, Environmental Assessment Division
<i>Project Manager:</i>	Rebecca Sciarra, MA, CAHP Heritage Planner
<i>Project Administrator:</i>	Sarah Jagelewski, Hon. BA Research Archaeologist
<i>Report Preparation:</i>	Lindsay Popert, MA, CAHP Assistant Heritage Planner
<i>Graphics Preparation:</i>	Blake Williams, MLit GIS Technician Jonas Fernandez, MSc GIS Technician
<i>Report Reviewer:</i>	Rebecca Sciarra

EXECUTIVE SUMMARY

Archaeological Services Inc. (ASI) was contracted by Trow Associates Inc., Brampton, on behalf of the Region of Peel, to conduct a cultural heritage assessment as part of the Zone 6 Reservoir and Feedermain Class Environmental Assessment, Regional Municipality of Peel, Ontario. The study area is bound by Mayfield Road in the south, Old Baseline Road in the north, McLaughlin Road in the west, and Airport Road in the east.

The cultural heritage assessment determined that there are 192 previously identified cultural heritage resources within the study area limits: twelve properties are designated under the *Ontario Heritage Act*; 171 have been listed on Caledon's Built Heritage Inventory; and eight were identified through historic mapping. A review of the general 19th and 20th century settlement patterns, transportation history and general land use suggested that the study area has potential for the identification of additional resources relating to the settlement and growth of the former Township of Chinguacousy and the Town of Caledon.

In light of these results, the following recommendations are made:

1. Proposed feedermain and reservoir infrastructure and preferred alternative designs within the study area should be suitably planned in a manner that avoids any identified, above ground, cultural heritage resources. Designation of a property under the *Ontario Heritage Act* indicates that the resource retains high cultural heritage significance and confirms that a commitment has been made to conserve cultural heritage resources located on these properties;
2. Should alternative designs result in site alteration to lands adjacent to a designated heritage property, a heritage-specific impact assessment/conservation plan should be undertaken. Such a study should evaluate the adjacent site alteration and demonstrate that the heritage attributes of the protected heritage property will be conserved;
3. Should alternative designs result in direct impacts to a property listed on the Town of Caledon's Heritage Inventory, a Cultural Heritage Impact Statement should be undertaken, in accordance with the Town of Caledon's Official Plan, Section 3.2.3.1.5. This study should: categorize the feature(s) as either a built heritage resource or cultural heritage landscape; evaluate the resource(s); consider expected impacts; and develop specific measures necessary to mitigate adverse effects of the project on cultural heritage resources. If it is determined that a listed site will be indirectly impacted, and those impacts are considered significant, a Cultural Heritage Impact Statement may be recommended; and
4. A field review of the preferred Zone 6 reservoir and feedermain alternatives should be conducted in order to: confirm the presence of previously identified cultural heritage resources; identify any additional features of potential heritage significance; and to obtain information relevant for categorizing features as either built heritage resources or cultural heritage landscapes. Accordingly, mitigation measures should be developed to minimize impacts of the undertaking on cultural heritage resources.

TABLE OF CONTENTS

PROJECT PERSONNEL	ii
EXECUTIVE SUMMARY	iii
1.0 INTRODUCTION	1
2.0 BUILT HERITAGE RESOURCE AND CULTURAL HERITAGE LANDSCAPE ASSESSMENT CONTEXT	1
2.1 Approach and Methodology	1
2.2 Data Collection	5
3.0 BUILT HERITAGE RESOURCE AND CULTURAL HERITAGE LANDSCAPE ASSESSMENT	7
3.1 Introduction	7
3.2 Township Survey and Settlement	7
3.3 Existing Conditions	10
4.0 CONCLUSIONS	18
5.0 RECOMMENDATIONS AND FURTHER WORK	19
6.0 REFERENCES CITED	20
APPENDIX A: Previously Identified Cultural Heritage Resource Mapping	21

LIST OF TABLES

Table 1: List of Historic Features within the Study Area	8
Table 2: Previously Identified Cultural Heritage Resources (CHR) in the Zone 6 Reservoir and Feedermain Class EA	10

LIST OF FIGURES

Figure 1: Location of the study area in the Town of Caledon	2
Figure 2: Location of study area in the <i>Illustrated Historical Atlas of the County of Peel</i>	9

1.0 INTRODUCTION

Archaeological Services Inc. (ASI) was contracted by Trow Associates, on behalf of the Region of Peel, to conduct a cultural heritage assessment for the Zone 6 Reservoir and Feedermain Class Environmental Assessment (EA) in the Regional Municipality of Peel, Ontario (Figure 1). The primary area under analysis encompasses the area bounded by Old Baseline Road, Airport Road, Mayfield Road and McLaughlin Road in the Town of Caledon. The intent of this study is to identify the potential constraints for the siting of a feedermain and water storage facilities, including: an on grade and buried reservoir; and one to six elevated tanks.

The purpose of this report is to present an inventory of previously identified built heritage resources and cultural heritage landscapes in the study area. This research was conducted under the project direction of Rebecca A. Sciarra, Heritage Planner.

2.0 BUILT HERITAGE RESOURCE AND CULTURAL HERITAGE LANDSCAPE ASSESSMENT CONTEXT

2.1 Approach and Methodology

This cultural heritage assessment considers cultural heritage resources in the context of improvements to specified areas, pursuant to the *Environmental Assessment Act*. This assessment addresses above ground cultural heritage resources over 40 years old. Use of a 40 year old threshold is a guiding principle when conducting a preliminary identification of cultural heritage resources (Ministry of Transportation 2006; Ministry of Transportation 2007; Ontario Realty Corporation 2007). While identification of a resource that is 40 years old or older does not confer outright heritage significance, this threshold provides a means to collect information about resources that may retain heritage value. Similarly, if a resource is slightly younger than 40 years old, this does not preclude the resource from retaining heritage value.

The proposed construction of a feedermain and water storage facilities has the potential to affect cultural heritage resources in a variety of ways. These include the loss or displacement of resources through removal or demolition and the disruption of resources by introducing physical, visual, audible or atmospheric elements that are not in keeping with the resources and/or their setting.

For the purposes of this assessment, the term cultural heritage resources was used to describe both cultural landscapes and built heritage features. A cultural landscape is perceived as a collection of individual built heritage features and other related features that together form farm complexes, roadscapes and nucleated settlements. Built heritage features are typically individual buildings or structures that may be associated with a variety of human activities, such as historical settlement and patterns of architectural development.

The analysis throughout the study process addresses cultural heritage resources under various pieces of legislation and their supporting guidelines. Under the *Environmental Assessment Act* (1990) environment is defined in Subsection 1(c) to include:

- cultural conditions that influence the life of man or a community, and;
- any building, structure, machine, or other device or thing made by man.

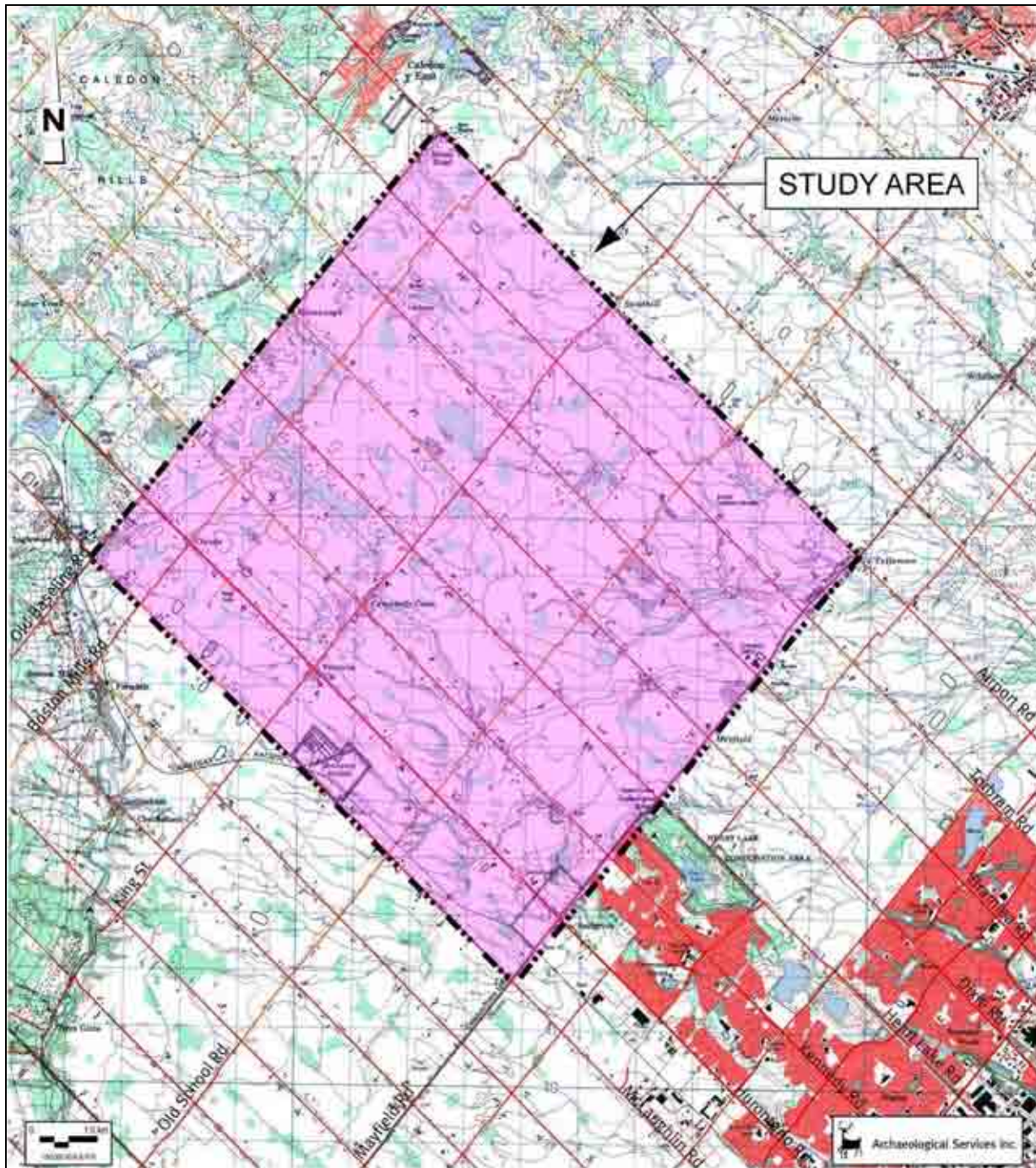


Figure 1: Location of study area in the Town of Caledon

The Ministry of Culture is charged under Section 2 of the *Ontario Heritage Act* with the responsibility to determine policies, priorities and programs for the conservation, protection and preservation of the heritage of Ontario and has published two guidelines to assist in assessing cultural heritage resources as part of an environmental assessment: *Guideline for Preparing the Cultural Heritage Resource Component of Environmental Assessments* (1992), and *Guidelines on the Man-Made Heritage*

Component of Environmental Assessments (1981). Accordingly, both guidelines have been utilized in this assessment process.

The *Guidelines on the Man-Made Heritage Component of Environmental Assessments* (Section 1.0) states the following:

When speaking of man-made heritage we are concerned with the works of man and the effects of his activities in the environment rather than with movable human artifacts or those environments that are natural and completely undisturbed by man.

In addition, environment may be interpreted to include the combination and interrelationships of human artifacts with all other aspects of the physical environment, as well as with the social, economic and cultural conditions that influence the life of the people and communities in Ontario. The *Guidelines on the Man-Made Heritage Component of Environmental Assessments* distinguish between two basic ways of visually experiencing this heritage in the environment, namely as cultural landscapes and as cultural features.

Within this document, cultural landscapes are defined as the following:

The use and physical appearance of the land as we see it now is a result of man's activities over time in modifying pristine landscapes for his own purposes. A cultural landscape is perceived as a collection of individual man-made features into a whole. Urban cultural landscapes are sometimes given special names such as townscapes or streetscapes that describe various scales of perception from the general scene to the particular view. Cultural landscapes in the countryside are viewed in or adjacent to natural undisturbed landscapes, or waterscapes, and include such landuses as agriculture, mining, forestry, recreation, and transportation. Like urban cultural landscapes, they too may be perceived at various scales: as a large area of homogeneous character; or as an intermediate sized area of homogeneous character or a collection of settings such as a group of farms; or as a discrete example of specific landscape character such as a single farm, or an individual village or hamlet (Section 1.0).

A cultural feature is defined as the following:

...an individual part of a cultural landscape that may be focused upon as part of a broader scene, or viewed independently. The term refers to any man-made or modified object in or on the land or underwater, such as buildings of various types, street furniture, engineering works, plantings and landscaping, archaeological sites, or a collection of such objects seen as a group because of close physical or social relationships (Section 1.0).

Additionally, the *Planning Act* (1990) and related *Provincial Policy Statement (PPS)* make a number of provisions relating to heritage conservation. One of the general purposes of the *Planning Act* is to integrate matters of provincial interest in provincial and municipal planning decisions. In order to inform all those involved in planning activities of the scope of these matters of provincial interest, Section 2 of the *Planning Act* provides an extensive listing. These matters of provincial interest shall be regarded when certain authorities, including the council of a municipality, carry out their responsibilities under the *Act*. One of these provincial interests is directly concerned with:

- 2.0 ...protecting cultural heritage and archaeological resources for their economic, environmental, and social benefits.

Part 4.5 of the *PPS* states that:

Comprehensive, integrated and long-term planning is best achieved through municipal official plans. Municipal official plans shall identify provincial interests and set out appropriate land use designations and policies. Municipal official plans should also coordinate cross-boundary matters to complement the actions of other planning authorities and promote mutually beneficial solutions.

Municipal official plans shall provide clear, reasonable and attainable policies to protect provincial interests and direct development to suitable areas.

In order to protect provincial interests, planning authorities shall keep their official plans up-to-date with this Provincial Policy Statement. The policies of this Provincial Policy Statement continue to apply after adoption and approval of a municipal official plan.

Those policies of particular relevance for the conservation of heritage features are contained in Section 2- Wise Use and Management of Resources, wherein Subsection 2.6 - Cultural Heritage and Archaeological Resources, makes the following provisions:

- 2.6.1 Significant built heritage resources and cultural heritage landscapes shall be conserved.

A number of definitions that have specific meanings for use in a policy context accompany the policy statement. These definitions include built heritage resources and cultural heritage landscapes.

Built heritage resources mean one or more buildings, structures, monuments, installations or remains associated with architectural, cultural, social, political, economic, or military history, and identified as being important to a community.

Cultural heritage landscapes mean a defined geographical area of heritage significance that has been modified by human activities. Such an area is valued by a community, and is of significance to the understanding of the history of a people or place. Examples include farmscapes, historic settlements, parks, gardens, battlefields, mainstreets and neighbourhoods, cemeteries, trailways, and industrial complexes of cultural heritage value (Provincial Policy Statement, 2005).

In addition, *significance* is also more generally defined. It is assigned a specific meaning according to the subject matter or policy context, such as wetlands or ecologically important areas. With regard to cultural heritage and archaeology resources, resources of significance are those that are valued for the important contribution they make to our understanding of the history of a place, an event, or a people.

Criteria for determining significance for the resources are recommended by the Province, but municipal approaches that achieve or exceed the same objective may also be used. While some significant resources may already be identified and inventoried by official sources, the significance of others can only be determined after evaluation.

Accordingly, the foregoing guidelines and relevant policy statement were used to guide the scope and methodology of the cultural heritage assessment.

2.2 Data Collection

In the course of the cultural heritage assessment, all potentially affected cultural heritage resources within the study corridor are subject to inventory. Short form names are usually applied to each resource type, (e.g. barn, residence). Generally, when conducting a preliminary identification of cultural heritage resources, three stages of research and data collection are undertaken to appropriately establish the potential for and existence of cultural heritage resources in a particular geographic area.

Background historic research, which includes consultation of primary and secondary source research and historic mapping, is undertaken to identify early settlement patterns and broad agents or themes of change in a study area. This stage in the data collection process enables the researcher to determine the presence of sensitive heritage areas that correspond to 19th and 20th century settlement and development patterns. To augment data collected during this stage of the research process, federal, provincial, and municipal databases and/or agencies are consulted to obtain information about specific properties that have been previously identified and/or designated as retaining cultural heritage value. Typically, resources identified during these stages of the research process are reflective of particular architectural styles, associated with an important person, place, or event, and contribute to the contextual facets of a particular place, neighbourhood, or intersection.

This report presents an existing conditions analysis of the study area and therefore presents the result of desk-top data collection. Once detailed feedermain alignments and storage facility sites have been selected and mapping provided, ASI will update the contents of this report to reflect the preferred siting alternatives and to identify cultural heritage resources that will be impacted by the proposed water storage facilities.

Upon receipt of detailed design plans and alternatives, a field review is then undertaken to confirm the location and condition of previously identified cultural heritage resources. The field review is also utilized to identify cultural heritage resources that have not been previously identified on federal, provincial, or municipal databases.

Several investigative criteria are utilized during the field review to appropriately identify new cultural heritage resources. These investigative criteria are derived from provincial guidelines, definitions, and past experience. A built structure or landscape is identified as a cultural heritage resource that should be considered during the course of the environmental assessment, if the resource meets a combination of the following criteria:

- It is 40 years or older;
- It is a rare, unique, representative or early example of a style, type, expression, material or construction method;
- It displays a high degree of craftsmanship or artistic merit;
- It demonstrates a high degree of technical or scientific achievement;
- The site and/or structure retains original stylistic features and has not been irreversibly altered so as to destroy its integrity;

- It has a direct association with a theme, event, belief, person, activity, organization, or institution that is significant to the: the Town of Caledon; the Province of Ontario; Canada; or the world heritage list;
- It yields, or had the potential to yield, information that contributes to an understanding of: the Town of Caledon; the Province of Ontario; Canada; or the world heritage list;
- It demonstrates or reflects the work or ideas of an architect, artist builder, designer, or theorist who is significant to: the Town of Caledon; the Province of Ontario; Canada; or the world heritage list;
- It is important in defining, maintaining, or supporting the character of an area;
- It is physically, functionally, visually, or historically linked to its surroundings;
- It is a landmark;
- It illustrates a significant phase in the development of the community or a major change or turning point in the community's history;
- The landscape contains a structure other than a building (fencing, culvert, public art, statue, etc.) that is associated with the history or daily life of that area or region; or
- There is evidence of previous historic and/or existing agricultural practices (e.g. terracing, deforestation, complex water canalization, apple orchards, vineyards, etc.).

If a resource satisfies an appropriate combination of these criteria, it will be identified as a cultural heritage resource and is subject to further research where appropriate and when feasible. Typically, further historical research and consultation is required to determine the specific significance of the identified cultural heritage resource.

When identifying cultural heritage landscapes, the following categories are typically utilized for the purposes of the classification during the field review:

Farm complexes: comprise two or more buildings, one of which must be a farmhouse or barn, and may include a tree-lined drive, tree windbreaks, fences, domestic gardens and small orchards.

Roadscapes: generally two-lanes in width with absence of shoulders or narrow shoulders only, ditches, tree lines, bridges, culverts and other associated features.

Waterscapes: waterway features that contribute to the overall character of the cultural heritage landscape, usually in relation to their influence on historic development and settlement patterns.

Railsapes: active or inactive railway lines or railway rights of way and associated features.

Historical settlements: groupings of two or more structures with a commonly applied name.
Streetscapes: generally consists of a paved road found in a more urban setting, and may include a series of houses that would have been built in the same time period.

Historical agricultural

Landscapes: generally comprises a historically rooted settlement and farming pattern that reflects a recognizable arrangement of fields within a lot and may have associated agricultural outbuildings and structures

Cemeteries: land used for the burial of human remains.

Results of the existing conditions data collection are contained in Section 3.0; while Sections 4.0 and 5.0 contain preliminary conclusions and recommendations for further work to be conducted with respect to potential disruptions and displacements of identified heritage resources pertaining to the proposed Zone 6 Reservoir and Feedermain.

3.0 BUILT HERITAGE RESOURCE AND CULTURAL HERITAGE LANDSCAPE ASSESSMENT

3.1 Introduction

This section provides a brief summary of historic research and a description of previously identified above ground cultural heritage resources that may be affected by the Zone 6 Reservoir and Feedermain Class EA. The subject study area is located in the Town of Caledon, Region of Peel. Historically, the area under study is located in the former Township of Chinguacousy North, County of Peel. Historic mapping of the township is provided in the 1877 *Illustrated Historical Atlas of the County of Peel* (Walker and Miles). This mapping was reviewed in order to determine the location of historic settlements, road alignments and other transportation related data. A review of additional primary and secondary source material was undertaken to produce a contextual overview of the study corridor, including a general description of Euro-Canadian settlement and land-use.

3.2 Township Survey and Settlement

The Township of Chinguacousy was surveyed in 1818 and 1819 and opened up for settlement in 1820. Most settlers to this area were from New Brunswick, the United States and parts of Upper Canada. The township was divided in half by Hurontario Street and the concessions were numbered east and west from this central thoroughfare. In the 1877 *Illustrated Historical Atlas of the County of Peel*, Chinguacousy was noted as a first class agricultural township with substantial farm residences and suggests that this was perhaps the richest tract of land in the country at that time (Walker and Miles 1877:65).

The study area is located on Lots 18 to 34, Concessions I (west of Hurontario) and I to VI (east of Hurontario) in the former Township of Chinguacousy North, County of Peel. The atlas depicts several property owners/residents and historic features within the study area (Figure 2). Historic features are presented in Table 1. It should be noted, however, that not all features of interest were mapped systematically in the Ontario series of historical atlases, given that they were financed by subscription, and subscribers were given preference with regard to the level of detail provided on the maps. Moreover, not every feature of interest would have been within the scope of the atlas.

Table 1: List of Historic Features within the Study Area

Lot	Concession	Historic Feature
18	I EHS	Church
20	III EHS	Church
22	II EHS	Church, cemetery
22	IV EHS	Church
23	III EHS	Schoolhouse
23	VI EHS	Schoolhouse
30	II EHS	Schoolhouse
32	IV EHS	Two churches
33	I EHS	Church
33	II EHS	Church

The Zone 6 study area is located in the northern most quadrant of the Township of Chinguacousy. Within this area, a number of villages and hamlets developed at various cross roads in the township, often in close proximity to a waterway or railroad line. The Credit Valley Railway was constructed through the southern portion in 1879, connecting Brampton to Inglewood, and currently operates as part of the Canadian Pacific Railway. The following historic settlements are identified on historic mapping (Figure 2): Edmonton (presently Snelgrove); Mayfield; Tullamore; Sand Hill; Cambell's Cross; Victoria; Kilmanagh; and Mono Road. A hamlet at Boston Mills Road and Hurontario Street is also indicated, although a name is not provided, and which is presently referred to as Claude.

From the 19th century and through most of the 20th century, the Township of Chinguacousy continued to grow as a farming community. In 1974, the township was divided between the Town of Caledon and the City of Brampton, with Mayfield Road serving as the boundary line. This part of the Town of Caledon has remained largely agricultural; however, an increase in residential subdivision development is evident along Mayfield Road in the southern part of the study area. Additionally, the proposed Highway 410 extension will continue north of Mayfield Road between Heart Lake Road and Dixie Road, then travel westwards towards Hurontario Street.

3.3 Existing Conditions

The following heritage resource inventories were consulted in order to determine the existence of previously identified cultural heritage resources in the study area and to collect any relevant information: the Ministry of Culture’s Ontario Heritage Properties Database; and the Town of Caledon’s Built Heritage Inventory. This part of the data collection process revealed that a number of 19th and early 20th century features have been previously recognized for their heritage significance through municipal ‘listing’. The majority of these resources are identified as farmsteads or individual dwellings. A total of twelve cultural heritage resources were found to be designated under Part IV of the *Ontario Heritage Act (OHA)*. In addition, a total of nine historic settlements were identified using a combination of historic and current mapping.

Table 2 lists all of the cultural heritage resources that have been previously identified within the Zone 6 Reservoir and Feedermain Class EA study area. The term ‘cultural heritage resources’ has been used during this stage of the study given that further information is required to appropriately categorize resource as ‘built heritage resources’ or ‘cultural heritage landscapes’. Mapping indicating the location of all previously identified cultural heritage resources is provided in Appendix A. It is important to note that the historic roads identified on the maps carry the same names and alignments of the present road system in the study area. They are identified to facilitate the identification of cultural heritage resources and historic settlements.

Table 2: Previously Identified Cultural Heritage Resources (CHR) in the Zone 6 Reservoir and Feedermain Class EA

Feature	Location	Feature Type	Estimated Age of Construction	Description/Comments	Map Ref.
CHR 1	2121 Olde Base Line Rd	Farmstead	1875-1899	Late Italianate dwelling; Central Ontario barn	Fig. 3-2
CHR 2	5065 Olde Base Line Rd	Farmstead	1850-1874	Neoclassical dwelling; Central Ontario barn	Fig. 3-3
CHR 3	5775 Old Base Line Rd	Farmstead	1875-1899	Gothic Revival dwelling; Central Ontario barn; driveshed	Fig. 3-3
CHR 4	5803 Olde Base Line Rd	Farmhouse	1875-1899	High Victorian Gothic dwelling; Designated under the <i>OHA</i> .	Fig. 3-3
CHR 5	5957 Olde Base Line Rd	Farmhouse	1875-1899	Late Neoclassical dwelling	Fig. 3-3
CHR 6	5969 Olde Base Line Rd	Farmhouse	1875-1899	Late Victorian Gothic dwelling	Fig. 3-3
CHR 7	5985 Olde Base Line Rd	Farmstead	1875-1899	Late Victorian Gothic dwelling; driveshed/carriage house/garage	Fig. 3-3
CHR 8	2608 Boston Mills Rd	Farmstead	1875-1899	Late Italianate dwelling; outbuildings; ruins	Fig. 3-2
CHR 9	2741 Boston Mills Rd	Outbuildings	Undetermined	Driveshed/carriage house/garage	Fig. 3-2
CHR 10	5846 Boston Mills Rd	Barn	1875-1899	Central Ontario barn	Fig. 3-3
CHR 11	2598 King St	Farmhouse	1900-1924	Edwardian Classical dwelling	Fig. 3-2
CHR 12	2968 King St	Farmhouse	Undetermined	Neoclassical dwelling	Fig. 3-2

Feature	Location	Feature Type	Estimated Age of Construction	Description/Comments	Map Ref.
CHR 13	3029 King St	Farmhouse	1900-1924	Undetermined style	Fig. 3-2
CHR 14	3206 King St	Farmstead	1875-1899	High Victorian Gothic dwelling; Central Ontario barn; various outbuildings	Fig. 3-2
CHR 15	3427 King St	Farmstead	1875-1899	High Victorian Gothic dwelling; Central Ontario barn; outbuilding	Fig. 3-2
CHR 16	3465 King St	Farmhouse	1875-1899	Late Neoclassical dwelling	Fig. 3-2
CHR 17	3515 King St	Church	1899	Picturesque Gothic style	Fig. 3-2
CHR 18	3646 King St	Farmhouse	1850-1874	Neoclassical dwelling	Fig. 3-2
CHR 19	5112 King St	Farmhouse	1900-1924	Edwardian Classical dwelling	Fig. 3-3
CHR 20	5435 King St	Farmhouse	1850-1874	Neoclassical dwelling	Fig. 3-3
CHR 21	5638 King St	Farmhouse	1850-1874	Neoclassical dwelling	Fig. 3-3
CHR 22	5683 King St	Farmhouse	1975-1899	Italianate dwelling	Fig. 3-3
CHR 23	5964 King St	Farmhouse	Undetermined	Undetermined style	Fig. 3-3
CHR 24	2939 Old School Rd	Schoolhouse	1866	Neoclassical style	Fig. 3-4
CHR 25	3431 Old School Rd	Farmstead	Undetermined	Neoclassical dwelling; barn	Fig. 3-4
CHR 26	4428 Old School Rd	Outbuildings	1875-1899	Central Ontario barn; other outbuildings	Fig. 3-4
CHR 27	4814 Old School Rd	Farmhouse	1900	Edwardian Classical dwelling	Fig. 3-5
CHR 28	4907 Old School Rd	Farmstead	1900-1924	Edwardian Classical dwelling; barn	Fig. 3-5
CHR 29	5069 Old School Rd	Farmstead	1875-1899	Italianate dwelling; Central Ontario barn	Fig. 3-5
CHR 30	5962 Old School Rd	Farmstead	1850-1874	Neoclassical dwelling, designated under the <i>OHA</i> ; additional outbuildings and ruins	Fig. 3-5
CHR 31	4848 Mayfield Rd	Farmhouse	1875-1899	Gothic Revival dwelling	Fig. 3-5
CHR 32	5450 Mayfield Rd	Barn	1875-1899	Central Ontario barn	Fig. 3-5
CHR 33	12461 McLaughlin Rd	Farmhouse	1875-1899	Late Italianate dwelling	Fig. 3-4
CHR 34	12711 McLaughlin Rd	Farmstead	1875-1899	Gothic Revival dwelling; barn	Fig. 3-4
CHR 35	12891 McLaughlin Rd	Farmstead	1875-1899	Gothic Revival dwelling; driveshed	Fig. 3-4
CHR 36	13343 McLaughlin Rd	Farmstead	1850-1874	Neoclassical dwelling; barn; outbuildings	Fig. 3-4

Feature	Location	Feature Type	Estimated Age of Construction	Description/Comments	Map Ref.
CHR 37	14297 McLaughlin Rd	Farmhouse	1875-1899	Gothic Revival dwelling	Fig. 3-2
CHR 38	12290 Hurontario St	Farmstead	1875-1899	High Victorian Gothic dwelling; barn	Fig. 3-4
CHR 39	12701 Hurontario St	Farmstead	1875-1899	Gothic Revival dwelling; barn; other outbuildings	Fig. 3-4
CHR 40	12760 Hurontario St	Farmstead	1900-1924	Edwardian Classical dwelling; barn	Fig. 3-4
CHR 41	12891 Hurontario St	Farmstead	1875-1899	Italianate dwelling; barn	Fig. 3-4
CHR 42	13144 Hurontario St	Farmhouse	1875-1899	Gothic Revival dwelling	Fig. 3-4
CHR 43	13242 Hurontario St	Farmstead	1875-1899	Late Italianate dwelling; barn	Fig. 3-4
CHR 44	13435 Hurontario St	Farmstead	1850-1874	Neoclassical dwelling; barn	Fig. 3-4
CHR 45	13648 Hurontario St	Farmstead	Undetermined	Various outbuildings; farmhouse; ruins	Fig. 3-4
CHR 46	13707 Hurontario St	Farmstead	1875-1899	Central Ontario barns; other outbuildings	Fig. 3-4
CHR 47	13739 Hurontario St	Farmhouse	1850-1874	Neoclassical dwelling	Fig. 3-4
CHR 48	13904 Hurontario St	Farmhouse	1875-1899	Late Neoclassical dwelling	Fig. 3-2
CHR 49	13961 Hurontario St	House	1875-1899	Late Neoclassical dwelling	Fig. 3-2
CHR 50	13985 Hurontario St	House	1850-1874	Neoclassical dwelling	Fig. 3-2
CHR 51	13986 Hurontario St	House	1875-1899	Ontario Cottage	Fig. 3-2
CHR 52	14126 Hurontario St	Farmstead	1875-1899	High Victorian Gothic dwelling; Central Ontario barn	Fig. 3-2
CHR 53	14270 Hurontario St	Barn	1875-1899	Central Ontario	Fig. 3-2
CHR 54	14475 Hurontario St	Farmhouse	1850-1874	Neoclassical dwelling	Fig. 3-2
CHR 55	14514 Hurontario St	Farmstead	1875-1899	High Victorian Gothic dwelling; Central Ontario barn; other buildings; silo	Fig. 3-2
CHR 56	14691 Hurontario St	Farmhouse	1875-1899	Second Empire dwelling, designated under the <i>OHA</i>	Fig. 3-2
CHR 57	14780 Hurontario St	Farmhouse	1875-1899	Italianate dwelling	Fig. 3-2
CHR 58	14927 Hurontario St	Farmstead	1850-1874	Neoclassical dwelling; barn	Fig. 3-2
CHR 59	14940 Hurontario St	House	1925-1945	Bungalow style	Fig. 3-2
CHR 60	14970 Hurontario St	House	1875-1899	High Victorian Gothic dwelling	Fig. 3-2
CHR 61	15024 Hurontario St	House	1850-1874	Italianate dwelling, designated under the <i>OHA</i>	Fig. 3-2

Feature	Location	Feature Type	Estimated Age of Construction	Description/Comments	Map Ref.
CHR 62	15084 Hurontario St	House	1850-1874	Italianate dwelling	Fig. 3-2
CHR 63	15175 Hurontario St	Church	1875-1899	Picturesque Gothic, designated under the <i>OHA</i>	Fig. 3-2
CHR 64	15318 Hurontario St	Farmhouse	1875-1899	Gothic Revival dwelling	Fig. 3-2
CHR 65	15343 Hurontario St	Farmstead	1925-1945	Edwardian Classical dwelling; Central Ontario barn; other outbuildings	Fig. 3-2
CHR 66	15380 Hurontario St	House	1925-1945	Bungalow style	Fig. 3-2
CHR 67	14783 Kennedy Rd	Farmstead	1850-1874	Neoclassical dwelling, designated under the <i>OHA</i> , Central Ontario barn	Fig. 3-2
CHR 68	14896 Kennedy Rd	Farmstead	1875-1899	Gothic Revival dwelling; Central Ontario barn; silo	Fig. 3-2
CHR 69	15075 Kennedy Rd	Farmstead	1900-1924	Edwardian Classical dwelling; driveshed	Fig. 3-2
CHR 70	15078 Kennedy Rd	Farmhouse	1850-1874	Neoclassical dwelling, designated under the <i>OHA</i>	Fig. 3-2
CHR 71	15253 Kennedy Rd	Farmstead	1900-1927	Edwardian Classical dwelling; driveshed	Fig. 3-2
CHR 72	15345 Kennedy Rd	Farmstead	Undetermined	Dwelling and barn	Fig. 3-2
CHR 73	12304 Heart Lake Rd	Farmstead	1875-1899	Gothic Revival dwelling; Central Ontario barn; driveshed/carriage house/garage	Fig. 3-4
CHR 74	12405 Heart Lake Rd	Barn	1875-1899	Central Ontario barn	Fig. 3-4
CHR 75	12506 Heart Lake Rd	Farmhouse	1900-1924	Late Italianate	Fig. 3-4
CHR 76	12698 Heart Lake Rd	Farmhouse	1850-1874	Neoclassical dwelling	Fig. 3-4
CHR 77	12863 Heart Lake Rd	Farmstead	Undetermined	Dwelling, barn, other outbuildings	Fig. 3-4
CHR 78	12864 Heart Lake Rd	Farmstead	1901	Edwardian Classical dwelling, Central Ontario barn	Fig. 3-4
CHR 79	13070 Heart Lake Rd	Farmstead	1900	Edwardian Classical dwelling, Central Ontario barn	Fig. 3-4
CHR 80	13682 Heart Lake Rd	Farmstead	1900-1924	Edwardian Classical dwelling, Central Ontario barn, driveshed/carriage house/garage	Fig. 3-4
CHR 81	13707 Heart Lake Rd	Farmstead	1900-1924	Edwardian Classical dwelling, Central Ontario barn	Fig. 3-4
CHR 82	14165 Heart Lake Rd	Farmhouse	1875-1899	Gothic Revival dwelling	Fig. 3-2
CHR 83	14263 Heart Lake Rd	Farmstead	1875-1899	Italianate dwelling, Central Ontario barn, driveshed/garage/carriage house	Fig. 3-2
CHR 84	14509 Heart Lake Rd	Farmstead	1900-1924	Edwardian Classical dwelling, Central Ontario barn, driveshed/carriage house/garage	Fig. 3-2
CHR 85	14650 Heart Lake Rd	Farmstead	1875-1899	High Victorian Gothic dwelling, designated under the <i>OHA</i> , Central Ontario barn, other outbuildings	Fig. 3-2

Feature	Location	Feature Type	Estimated Age of Construction	Description/Comments	Map Ref.
CHR 86	14782 Heart Lake Rd	Farmstead	1875-1899	Gothic Revival farmhouse, Central Ontario barn, early manufactured windmill, other outbuildings	Fig. 3-2
CHR 87	14855 Heart Lake Rd	Farmstead	1900-1924	Edwardian Classical dwelling, Central Ontario barn, other outbuildings	Fig. 3-2
CHR 88	12391 Heart Lake Rd	House	1900-1924	Late Victorian Gothic dwelling	Fig. 3-4
CHR 89	12035 Dixie Rd	Farmstead	1850-1874	Italianate dwelling; Central Ontario barn; an additional barn	Fig. 3-5
CHR 90	12094 Dixie Rd	Barn	1875-1899	Central Ontario barn	Fig. 3-5
CHR 91	12434 Dixie Rd	Farmstead	1900-1927	Edwardian Classical dwelling; Central Ontario barn	Fig. 3-5
CHR 92	12489 Dixie Rd	Farmstead	1850-1874	Neoclassical dwelling; barn	Fig. 3-5
CHR 93	12496 Dixie Rd	Church and Cemetery	19 th century	Picturesque Gothic church; pioneer cemetery	Fig. 3-5
CHR 94	12861 Dixie Rd	Farmstead	1900-1924	Edwardian Classical dwelling, barn	Fig. 3-5
CHR 95	12892 Dixie Rd	Farmstead	1850-1875	Neoclassical dwelling, Central Ontario barn, other outbuildings	Fig. 3-5
CHR 96	13079 Dixie Rd	Farmstead	1895	Late Italianate dwelling, designated under the <i>OHA</i> ; barn; other outbuildings	Fig. 3-5
CHR 97	13301 Dixie Rd	Farmstead	1900-1924	Edwardian Classical dwelling; barn	Fig. 3-5
CHR 98	13468 Dixie Rd	Farmstead	1875-1899	Gothic Revival dwelling; barn	Fig. 3-5
CHR 99	13680 Dixie Rd	Farmstead	1850-1874	Neoclassical dwelling; barn; silo; other outbuildings	Fig. 3-5
CHR 100	13899 Dixie Rd	Farmhouse	1875-1899	Italianate dwelling	Fig. 3-5
CHR 101	13866 Dixie Rd	Farmstead	1875-1899	Italianate dwelling; outbuilding	Fig. 3-3
CHR 102	13947 Dixie Rd	Farmstead	1850-1875	Neoclassical dwelling; barn	Fig. 3-3
CHR 103	13958 Dixie Rd	House	1925-1940	Bungalow style house	Fig. 3-3
CHR 104	13986 Dixie Rd	House	1875-1899	Late Neoclassical dwelling	Fig. 3-3
CHR 105	14324 Dixie Rd	Farmstead	1875-1899	High Victorian Gothic dwelling; barn; silo	Fig. 3-3
CHR 106	14491 Dixie Rd	Farmstead	1925-1940	Georgian Revival dwelling; barn	Fig. 3-3
CHR 107	14696 Dixie Rd	Farmstead	1875-1899	Late Italianate dwelling; barn	Fig. 3-3
CHR 108	14898 Dixie Rd	Farmstead	1850-1874	Neoclassical dwelling, designated under the <i>OHA</i> ; barn	Fig. 3-3
CHR 109	14943 Dixie Rd	Barn	1875-1899	Central Ontario barn; outbuildings	Fig. 3-3

Feature	Location	Feature Type	Estimated Age of Construction	Description/Comments	Map Ref.
CHR 110	14999 Dixie Rd	Cemetery	Pre-1850	Pioneer cemetery	Fig. 3-3
CHR 111	15147 Dixie Rd	Farmstead	1850-1874	Neoclassical dwelling; outbuilding	Fig. 3-3
CHR 112	15276 Dixie Rd	Farmstead	1875-1899	Late Italianate dwelling; barn	Fig. 3-3
CHR 113	15388 Dixie Rd	House	1850-1874	Neoclassical dwelling	Fig. 3-3
CHR 114	15148 Dixie Rd	Barn	1875-1899	Central Ontario barn	Fig. 3-3
CHR 115	12282 Bramalea Rd	Farmhouse	1900-1924	Bungalow style	Fig. 3-5
CHR 116	12600 Bramalea Rd	Farmhouse	1850-1874	Neoclassical dwelling	Fig. 3-5
CHR 117	12722 Bramalea Rd	Farmhouse	1850-1874	Neoclassical dwelling	Fig. 3-5
CHR 118	12801 Bramalea Rd	House	Undetermined	Log	Fig. 3-5
CHR 119	13278 Bramalea Rd	Farmstead	1875-1899	Italianate dwelling; outbuilding	Fig. 3-5
CHR 120	13297 Bramalea Rd	Farmstead	1875-1899	Late Victorian Gothic; barn	Fig. 3-5
CHR 121	13513 Bramalea Rd	Farmhouse	Pre-1850	Neoclassical dwelling	Fig. 3-5
CHR 122	13536 Bramalea Rd	Outbuilding	Undetermined	Driveshed/carriage house/garage	Fig. 3-5
CHR 123	13720 Bramalea Rd	Farmhouse	1900-1924	Edwardian Classical dwelling	Fig. 3-5
CHR 124	13865 Bramalea Rd	Farmstead	1850-1874	Neoclassical dwelling; barn; other outbuilding	Fig. 3-3
CHR 125	14080 Bramalea Rd	Farmhouse	1850-1874	Neoclassical dwelling	Fig. 3-3
CHR 126	14189 Bramalea Rd	Farmstead	1875-1899	High Victorian Gothic; barn; outbuildings	Fig. 3-3
CHR 127	14476 Bramalea Rd	Farmstead	1850-1874	Neoclassical dwelling; barn; outbuildings	Fig. 3-3
CHR 128	14521 Bramalea Rd	Barn	1875-1899	Central Ontario barn	Fig. 3-3
CHR 129	14720 Bramalea Rd	Farmhouse	1850-1874	Neoclassical dwelling	Fig. 3-3
CHR 130	14905 Bramalea Rd	Farmhouse	1850-1874	Neoclassical dwelling, designated under the <i>OHA</i> .	Fig. 3-3
CHR 131	15173 Bramalea Rd	Farmhouse	1900-1924	Edwardian Classical dwelling	Fig. 3-3
CHR 132	15296 Bramalea Rd	Farmstead	1875-1899	Central Ontario Barn; two silos	Fig. 3-3
CHR 133	12245 Torbram Rd	Farmstead	1850-1874	Neoclassical dwelling; barn	Fig. 3-5
CHR 134	12380 Torbram Rd	Farmhouse	1875-1899	Late Victorian Gothic dwelling	Fig. 3-5



Feature	Location	Feature Type	Estimated Age of Construction	Description/Comments	Map Ref.
CHR 135	12729 Torbram Rd	Farmstead	1875-1899	High Victorian Gothic dwelling; barn; other outbuilding	Fig. 3-5
CHR 136	13245 Torbram Rd	Farmstead	1866	Neoclassical dwelling; barn; other outbuildings	Fig. 3-5
CHR 137	13470 Torbram Rd	Farmstead	1850-1874	Neoclassical dwelling; barn	Fig. 3-5
CHR 138	13523 Torbram Rd	Farmstead	1875-1899	High Victorian Gothic dwelling; barn; other outbuildings	Fig. 3-5
CHR 139	13689 Torbram Rd	Farmstead	1900-1924	Edwardian Classical dwelling; barn	Fig. 3-5
CHR 140	14324 Torbram Rd	Farmstead	1850-1874	Neoclassical dwelling; barn	Fig. 3-3
CHR 141	14523 Torbram Rd	Farmstead	1900-1924	Edwardian Classical dwelling; barn	Fig. 3-3
CHR 142	14524 Torbram Rd	Farmstead	1850-1874	Neoclassical dwelling; barn; other outbuilding	Fig. 3-3
CHR 143	14676 Torbram Rd	Farmstead	1850-1874	Neoclassical dwelling; barn	Fig. 3-3
CHR 144	14681 Torbram Rd	Farmstead	1850-1874	Gothic Revival dwelling; outbuilding	Fig. 3-3
CHR 145	14966 Torbram Rd	Farmstead	1850-1874	Neoclassical dwelling; barn; other outbuilding	Fig. 3-3
CHR 146	15096 Torbram Rd	Farmhouse	1891	Italianate dwelling	Fig. 3-3
CHR 147	15185 Torbram Rd	Farmstead	1875-1899	Late Neoclassical dwelling; barn	Fig. 3-3
CHR 148	Torbram Rd, west side north of Old School Rd.	Hedgerow	1875-1899	Osage Orange Hedge, designed under the <i>OHA</i> .	Fig. 3-3
CHR 149	12542 Airport Rd	Farmhouse	Pre-1946	Undetermined style	Fig. 3-5
CHR 150	12620 Airport Rd	Farmhouse	1850-1874	Neoclassical dwelling	Fig. 3-5
CHR 151	13256 Airport Rd	Farmstead	1875-1899	Gothic Revival dwelling; barn; other outbuildings	Fig. 3-5
CHR 152	13440 Airport Rd	Farmstead	1850-1874	Neoclassical dwelling; other outbuildings	Fig. 3-5
CHR 153	13726 Airport Rd	Farmhouse	1850-1874	Neoclassical dwelling	Fig. 3-5
CHR 154	13940 Airport Rd	Farmstead	1850-1874	Neoclassical dwelling; outbuilding	Fig. 3-3
CHR 155	13958 Airport Rd	House	1850-1874	Neoclassical dwelling	Fig. 3-3
CHR 156	14210 Airport Rd	Farmhouse	1875-1899	Italianate dwelling	Fig. 3-3
CHR 157	14460 Airport Rd	Farmstead	1850-1874	Neoclassical dwelling; barn	Fig. 3-3
CHR 158	14628 Airport Rd	Farmstead	19th and early 20 th century	Neoclassical dwelling; Edwardian Classical dwelling; silo; other outbuildings	Fig. 3-3

Feature	Location	Feature Type	Estimated Age of Construction	Description/Comments	Map Ref.
CHR 159	14892 Airport Rd	Farmstead	1850-1874	Neoclassical dwelling; ruins	Fig. 3-3
CHR 160	15340 Airport Rd	House	1875-1899	Gothic Revival dwelling	Fig. 3-3
CHR 161	15346 Airport Rd	House	1850-1874	Neoclassical dwelling	Fig. 3-3
CHR 162	15366 Airport Rd	House	1875-1899	Gothic Revival dwelling	Fig. 3-3
CHR 163	15368 Airport Rd	House	1875-1899	Undetermined style	Fig. 3-3
CHR 164	15378 Airport Rd	House	1900-1924	Undetermined style	Fig. 3-3
CHR 165	15388 Airport Rd	Commercial building	1876	High Victorian Gothic	Fig. 3-3
CHR 166	12097 Kennedy Rd	Farmstead	1850-1874	Neoclassical dwelling; barn	Fig. 3-4
CHR 167	12409 Kennedy Rd	Farmhouse	1875-1899	Late Neoclassical dwelling	Fig. 3-4
CHR 168	12516 Kennedy Rd	Farmstead	1875-1899	Late Neoclassical dwelling; barn	Fig. 3-4
CHR 169	12551 Kennedy Rd	Farmstead	1875-1899	Late Neoclassical dwelling; outbuilding	Fig. 3-4
CHR 170	12895 Kennedy Rd	Church & Cemetery	Late 19 th century	Picturesque Gothic style; pioneer cemetery	Fig. 3-4
CHR 171	12909 Kennedy Rd	Farmstead	1875-1899	Gothic Revival dwelling; 2 barns	Fig. 3-4
CHR 172	13030 Kennedy Rd	Farmstead	1850-1874	Neoclassical dwelling; barn; outbuilding	Fig. 3-4
CHR 173	13306 Kennedy Rd	Farmstead	Late 19 th , early 20 th century	Neoclassical dwelling; driveshed; other outbuildings; ruins	Fig. 3-4
CHR 174	13678 Kennedy Rd	Farmstead	1875-1899	Late Neoclassical dwelling; barn	Fig. 3-4
CHR 175	13935 Kennedy Rd	Outbuildings	1850-1874	Central Ontario barn; other outbuildings	Fig. 3-4
CHR 176	13983 Kennedy Rd	House	1875-1899	Late Victorian Gothic dwelling	Fig. 3-4
CHR 177	13997 Kennedy Rd	House	1850-1874	Ontario Cottage	Fig. 3-4
CHR 178	14069 Kennedy Rd	House	1850-1874	Neoclassical dwelling	Fig. 3-4
CHR 179	14234 Kennedy Rd	Farmstead	1850-1874	Neoclassical dwelling; barn	Fig. 3-2
CHR 180	14235 Kennedy Rd	Farmstead	1900-1924	Edwardian Classical dwelling; barn; outbuildings	Fig. 3-2
CHR 181	14493 Kennedy Rd	Farmstead	1850-1874	Gothic Revival dwelling; Three Bay Horizontal board barn; silo; cemetery	Fig. 3-2
CHR 182	14498 Kennedy Rd	Farmhouse	1850-1874	Neoclassical dwelling	Fig. 3-2

Feature	Location	Feature Type	Estimated Age of Construction	Description/Comments	Map Ref.
CHR 183	15163 Dixie Rd	Farmstead	1850-1874	Neoclassical dwelling; outbuilding	Fig. 3-2
CHR 184	Mayfield	Historic Settlement	--	Located at the intersection of Dixie Rd and Mayfield Rd	Fig. 3-4
CHR 185	Tullamore	Historic Settlement	--	Located at the intersection of Airport Rd and Mayfield Rd	Fig. 3-5
CHR 186	Sandhill	Historic Settlement	--	Located at the intersection of Airport Rd and King St	Fig. 3-2
CHR 187	Mono Road	Historic Settlement	--	Located at the intersection of Airport Rd and Old Baseline Rd	Fig. 3-2
CHR 188	Kilmanagh	Historic Settlement	--	Located at the intersection of Dixie Rd and Old Baseline Rd	Fig. 3-2
CHR 189	Claude	Historic Settlement	--	Located at the intersection of Hurontario St and Boston Mills Rd	Fig. 3-2
CHR 190	Campbell's Cross	Historic Settlement	--	Located at the intersection of Kennedy Rd and King St	Fig. 3-2
CHR 191	Victoria	Historic Settlement	--	Located at the intersection of Hurontario St and King St	Fig. 3-2
CHR 192	Snelgrove/Edmonton	Historic Settlement	--	Located at the intersection of Hurontario St and Mayfield Rd	Fig. 3-4

4.0 CONCLUSIONS

Based upon historical research and a review of previously identified above ground cultural heritage resources on the Ministry of Culture's Heritage Properties Database and listed on the local municipal heritage inventory, the Zone 6 Reservoir and Feedermain Class Environmental Assessment study area retains numerous cultural heritage resources associated with the early settlement of this area. Moreover, several of the previously identified resources are associated with particular historic settlement centres that developed in this part of the Region of Peel in the 19th and 20th centuries. The following section provides a summary of previously identified heritage resources located in the study area:

- A total of 192 cultural heritage resources have been previously identified in the study area;
- A total of twelve cultural heritage resources are designated under Part IV of the *Ontario Heritage Act*. These include: five dwellings (CHR 4, CHR 56, CHR 61, CHR 70, CHR 130); five farmsteads (CHR 30, CHR 67, CHR 85, CHR 96, CHR 108); one church (CHR 63); and one hedgerow (CHR 148);
- A total of 171 cultural heritage resources are listed on Caledon's Built Heritage Inventory. These include:
 - 95 farmsteads (CHR 1-3, CHR 7-8, CHR 14-15, CHR 25, CHR 28-29, CHR 34-36, CHR 38-41, CHR 43-46, CHR 52, CHR 55, CHR 58, CHR 65, CHR 68-69, CHR 71-73, CHR 77-81, CHR 83-87, CHR 89, CHR 91-92, CHR 94-99, CHR 101-102, CHR 105-107, CHR 111-112, CHR 119-120, CHR 124, CHR 126-127, CHR 132-133, CHR 135-145, CHR 147, CHR 151-152, CHR 154, CHR 157; CHR 158-159; CHR 166, CHR 168-169, CHR 171-174, CHR 179-181, CHR 183);

- 68 individual dwellings (CHR 5-6, CHR 11-13, CHR 16, CHR 18-23, CHR 27, CHR 31, CHR 33, CHR 37, CHR 42, CHR 47-51, CHR 54, CHR 57, CHR 59-62, CHR 64, CHR 66, CHR 75-76, CHR 82, CHR 88, CHR 100, CHR 103-104, CHR 113, CHR 115-118, CHR 121, CHR 123, CHR 125, CHR 129-131, CHR 134, CHR 146, CHR 149-150, CHR 153, CHR 155-156, CHR 160-164, CHR 167, CHR 176-178, CHR 182);
 - twelve outbuildings and/or barns (CHR 9-10, CHR 26, CHR 32, CHR 53, CHR 74, CHR 90, CHR 109, CHR 114, CHR 122, CHR 128, CHR 175);
 - five churches and/or cemeteries (CHR 17, CHR 93, CHR 110, CHR 170);
 - one school house (CHR 24); and
 - one commercial building (CHR 165);
- The remaining nine resources are historic settlements (CHR 184-192) and were identified through historic mapping; and
 - It is anticipated that the majority of the major arterial roads that may be considered historic thoroughfares, as they are indicated on 19th century historic mapping, will have been significantly altered over the course of the 20th century and development of the various municipalities. This however, can only be confirmed upon field review.

5.0 RECOMMENDATIONS AND FURTHER WORK

The results of background historic research and a review of secondary source material, including the Ontario Ministry of Culture's Heritage Properties Database and the Town of Caledon's Built Heritage Inventory, revealed a study area with a long history of Euro-Canadian occupation containing 192 previously identified heritage areas and properties. As such, the proposed construction of water storage facilities within the Zone 6 Reservoir and Feedermain Class EA study area can have a variety of impacts upon these identified cultural heritage resources. These include the loss or displacement of resources through removal or demolition and the disruption of resources by introducing physical, visual, audible or atmospheric elements that are not in keeping with the resources and/or their setting.

Based on information provided to date, the following provides a summary of preliminary recommendations:

1. Proposed feedermain and reservoir infrastructure and preferred alternative designs within the study area should be suitably planned in a manner that avoids any identified, above ground, cultural heritage resources. Designation of a property under the *Ontario Heritage Act* indicates that the resource retains high cultural heritage significance and confirms that a commitment has been made to conserve cultural heritage resources located on these properties;
2. Should alternative designs result in site alteration to lands adjacent to a designated heritage property, a heritage-specific impact assessment/conservation plan should be undertaken. Such a study should evaluate the adjacent site alteration and demonstrate that the heritage attributes of the protected heritage property will be conserved; and
3. Should alternative designs result in direct impacts to a property listed on the Town of Caledon's Heritage Inventory, a Cultural Heritage Impact Statement should be undertaken, in accordance with the Town of Caledon's Official Plan, Section 3.2.3.1.5. This study should categorize the



resource as either a built heritage feature or cultural heritage landscape, evaluate the resource(s), consider expected impacts, and develop specific measures necessary to mitigate adverse effects of the project on cultural heritage resources. If it is determined that a listed site will be indirectly impacted, and those impacts are considered significant, a Cultural Heritage Impact Statement may be recommended.

Once siting alternatives have been selected, a field review of discrete portions of the focused analysis area will be conducted. The field review will be used to identify additional heritage resources, confirm the integrity of previously identified heritage properties and areas, categorize features as built heritage resources or cultural heritage landscapes, and to obtain information to accurately map above ground cultural heritage resources. Siting alternatives will then be evaluated with respect to the impact of the undertaking. When the preliminary preferred locations of the proposed water storage facilities have been established, construction impacts will be assessed and mitigation measures recommended.

6.0 REFERENCES CITED

Ministry of Culture, Ontario

- 1981 *Guidelines on the Man-Made Heritage Component of Environmental Assessments*
- 1992 *Guidelines for Preparing the Cultural Heritage Resource Component of Environmental Assessments*
- 2005 *Ontario Heritage Act*

Ministry of Environment, Ontario

- 2006 *Environmental Assessment Act*

Ministry of Municipal Affairs and Housing, Ontario

- 2005 *Ontario Planning Act*
- 2005 *Provincial Policy Statement*

Ministry of Transportation

- 2002 *Environmental Reference for Highway Design*
- 2006 *Cultural Heritage – Built Heritage and Cultural Heritage Landscapes: Technical Requirements for Environmental Impact Study and Environmental Protection/Mitigation.*
- 2007 *Environmental Guide for Built Heritage and Cultural Heritage Landscapes*

Ontario Realty Corporation

- 2007 *Heritage Management Process Handbook*

Pope, J. H.

- 1877 *Illustrated Historical Atlas of the County of Peel, Ontario.* Toronto: Walker and Miles.



APPENDIX A:

**Previously Identified Cultural Heritage Resource Mapping
Zone 6 Reservoir and Feedermain Class Environmental Assessment
Regional Municipality of Peel, Ontario**

EXISTING CONDITIONS



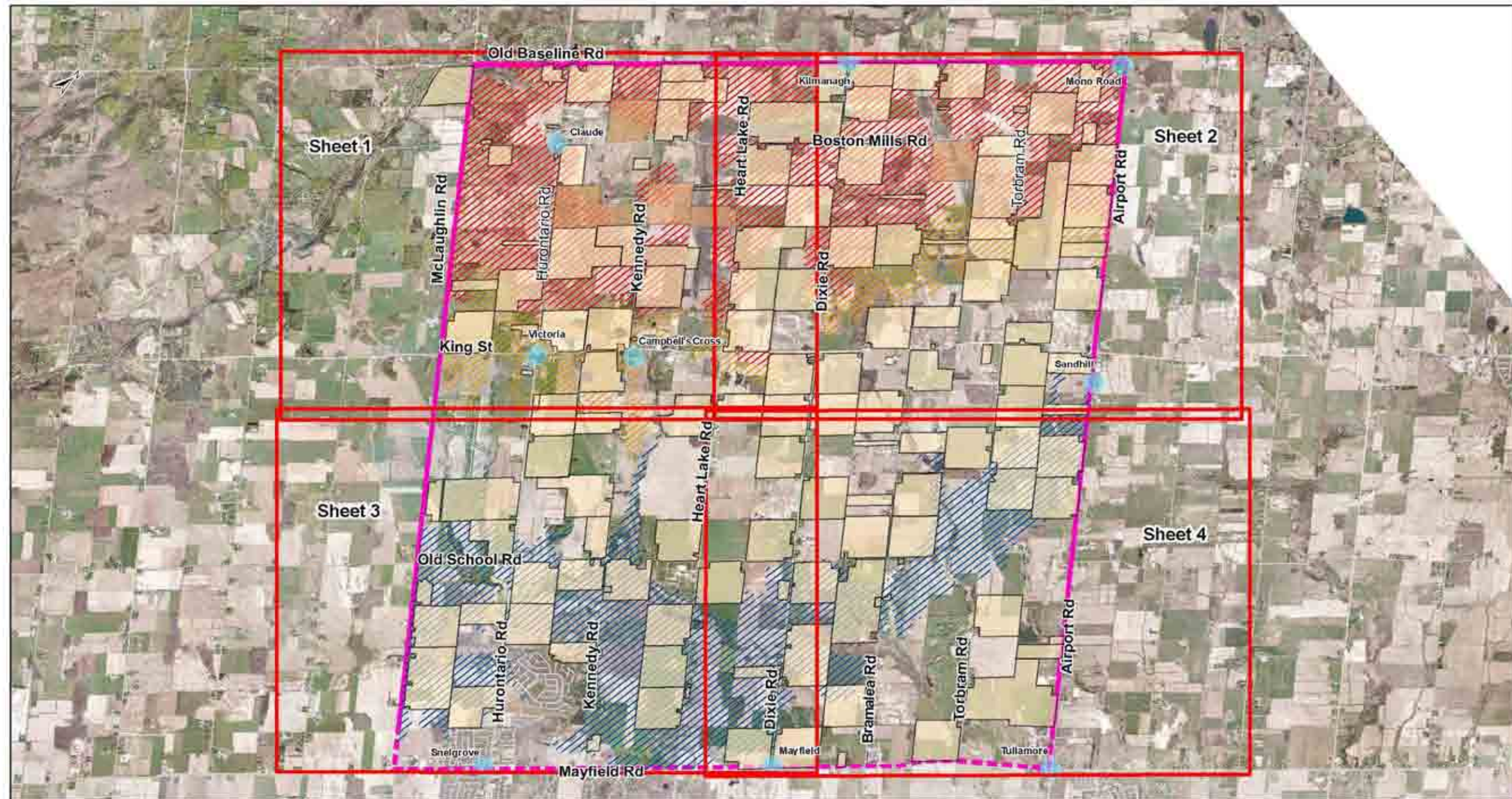


Figure 3-1: Key plan of the Zone 6 Reservoir and Feedermain Class EA Study Area

	<ul style="list-style-type: none"> ■ Study Area Cultural Heritage Resource Identified on Heritage Inventory Cultural Heritage Resource Designated Under Ontario Heritage Act 	<ul style="list-style-type: none"> On Grade and Buried Reservoir Elevated Tank Above Grade Reservoir 	<ul style="list-style-type: none"> ● Historic Settlement Centres 	Key Plan
	DATE: June 2nd, 2009		FILE: 08EA219_BH_keyplan	

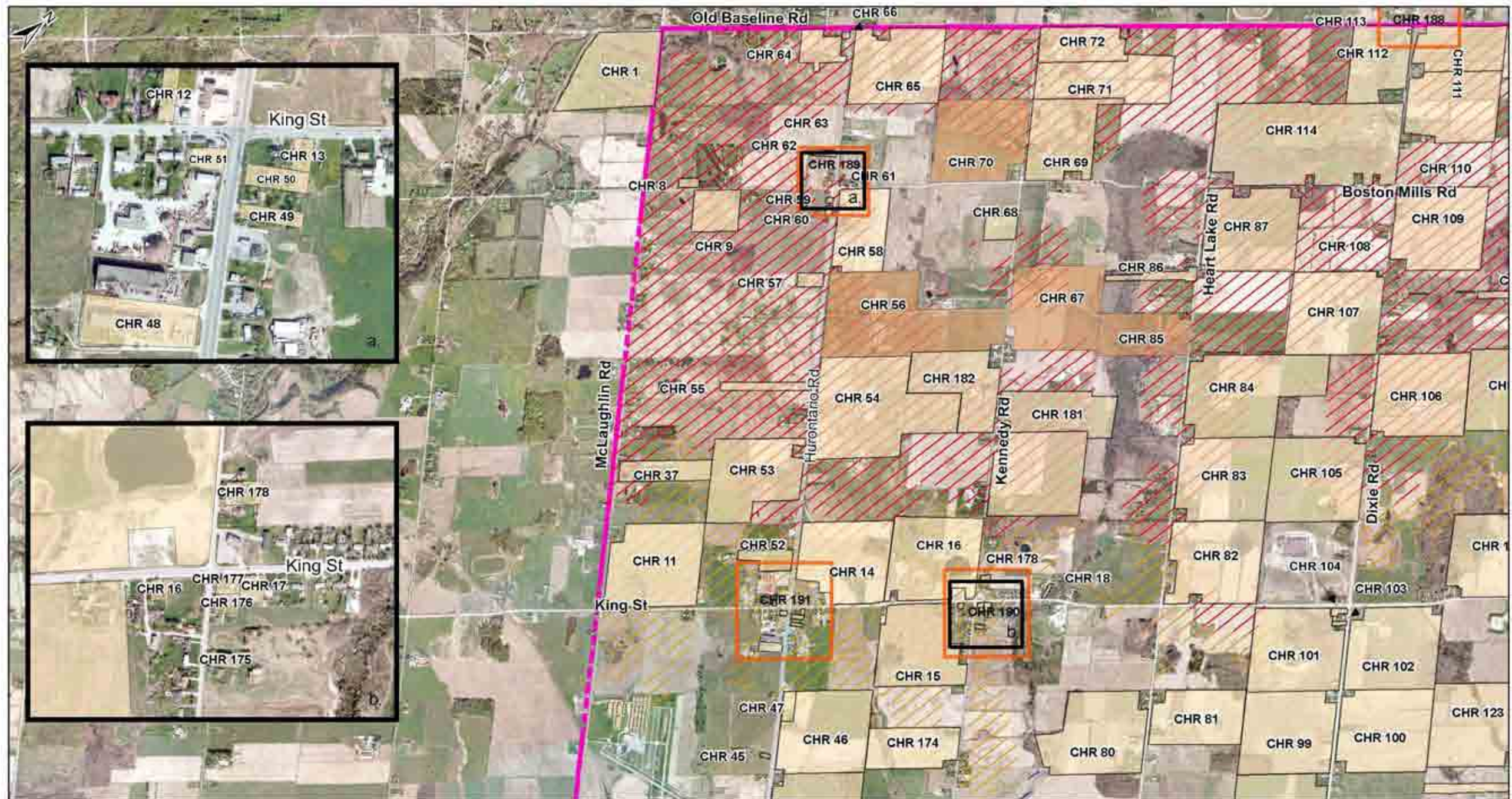


Figure 3-2: Sheet 1 of the Zone 6 Reservoir and Feedermain Class EA Study Area

	Study Area	On Grade and Buried Reservoir	Historic Settlement Centres
	Cultural Heritage Resource Identified on Heritage Inventory	Elevated Tank	Above Grade Reservoir
	Cultural Heritage Resource Designated Under Ontario Heritage Act		

Sheet 1

0 0.25 0.5 1
Kilometers

DATE: June 2nd, 2009 FILE: 08EA219_BH_sheet1

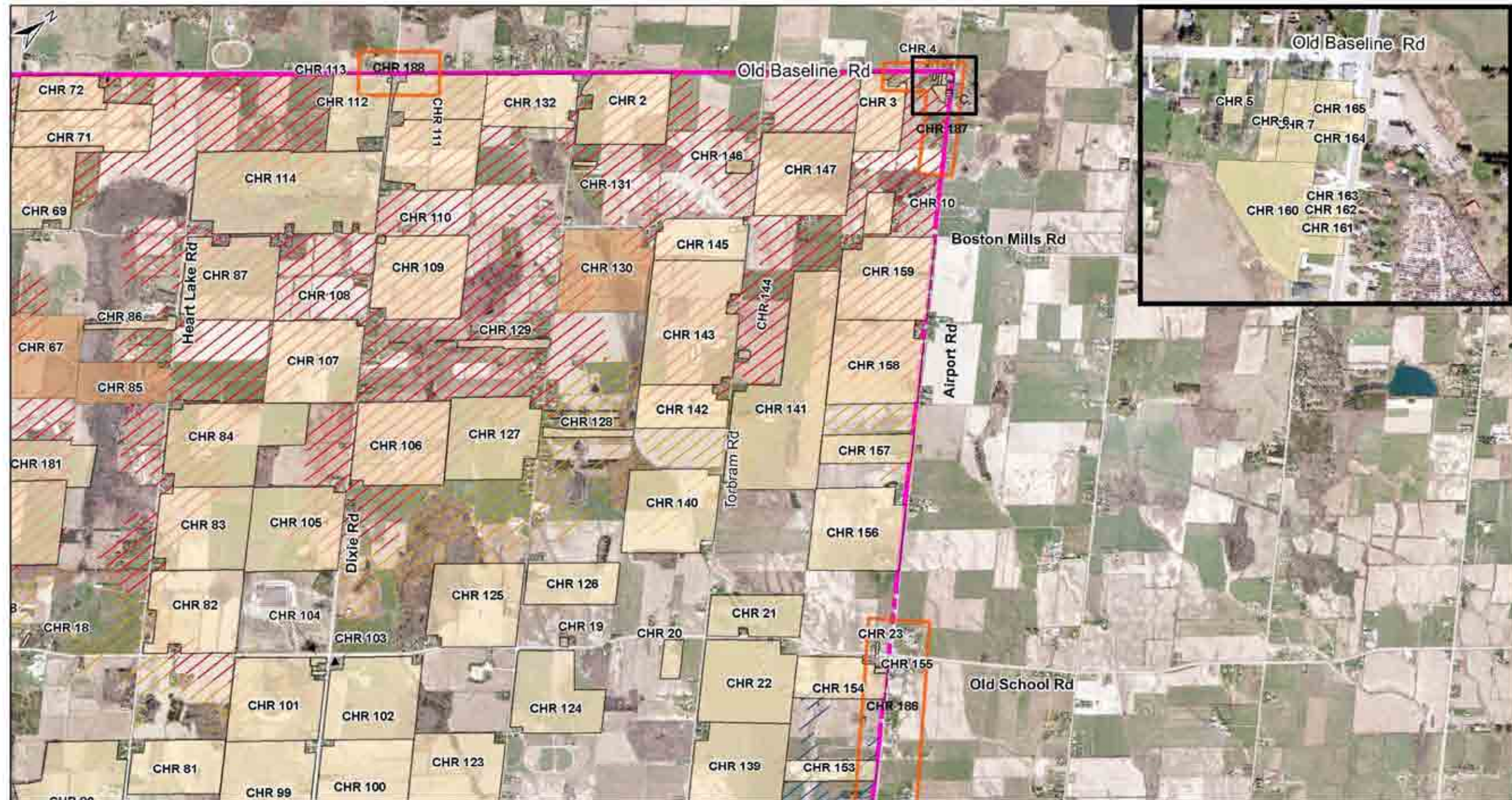


Figure 3-3: Sheet 2 of the Zone 6 Reservoir and Feedermain Class EA Study Area

	Study Area Cultural Heritage Resource Identified on Heritage Inventory Cultural Heritage Resource Designated Under Ontario Heritage Act	On Grade and Buried Reservoir Elevated Tank Historic Settlement Centres Above Grade Reservoir	Sheet 2 DATE: June 2nd, 2009 FILE: 08EA219_BH_sheet2
--	---	--	--

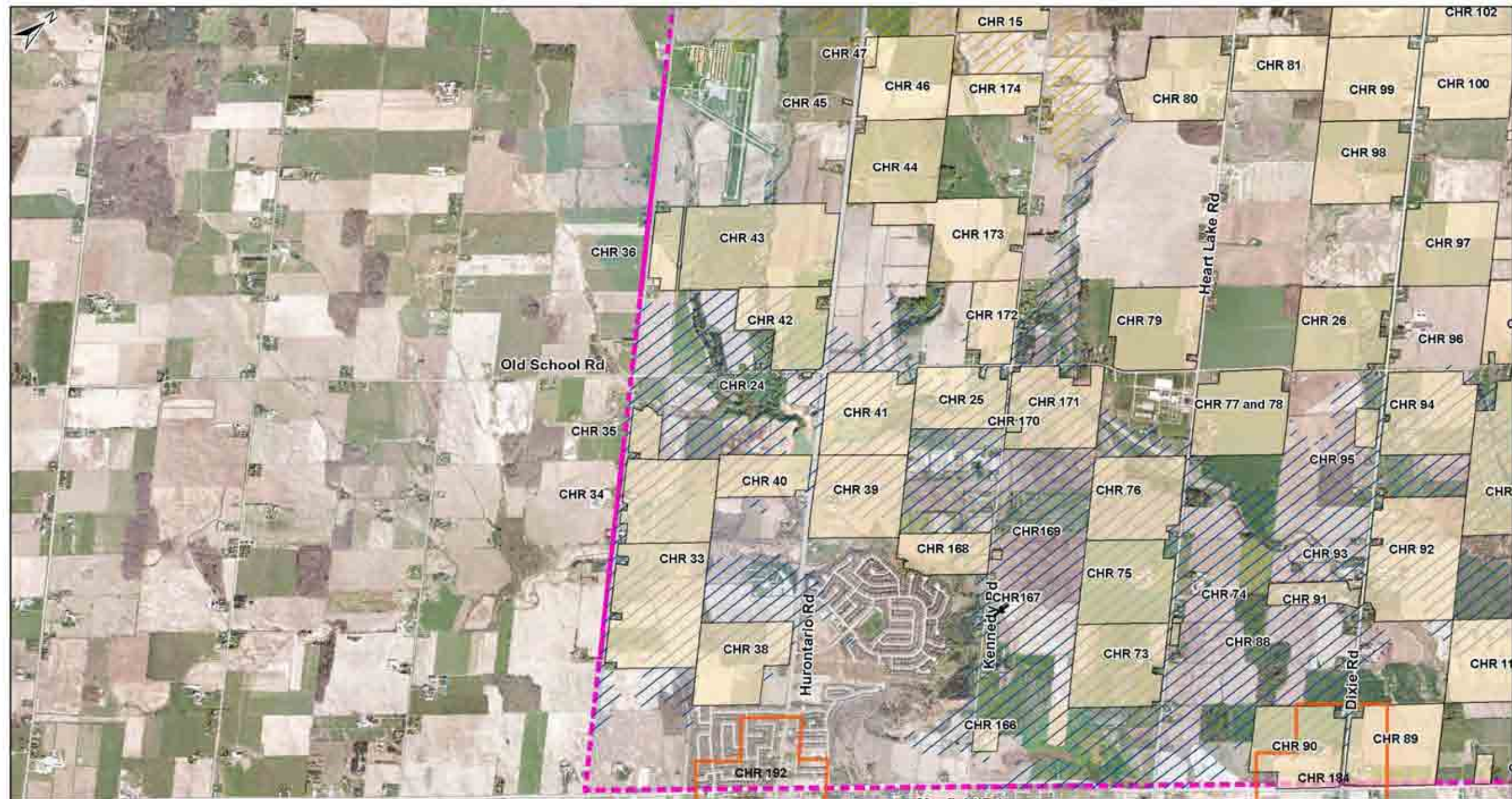


Figure 3-4: Sheet 3 of the Zone 6 Reservoir and Feedermain Class EA Study Area

	Study Area	On Grade and Buried Reservoir	Historic Settlement Centres
	Cultural Heritage Resource Identified on Heritage Inventory	Elevated Tank	Above Grade Reservoir
	Cultural Heritage Resource Designated Under Ontario Heritage Act		

Sheet 3

0 0.25 0.5 1
Kilometers

DATE: June 2nd, 2009 FILE: 08EA219_BH_sheet3

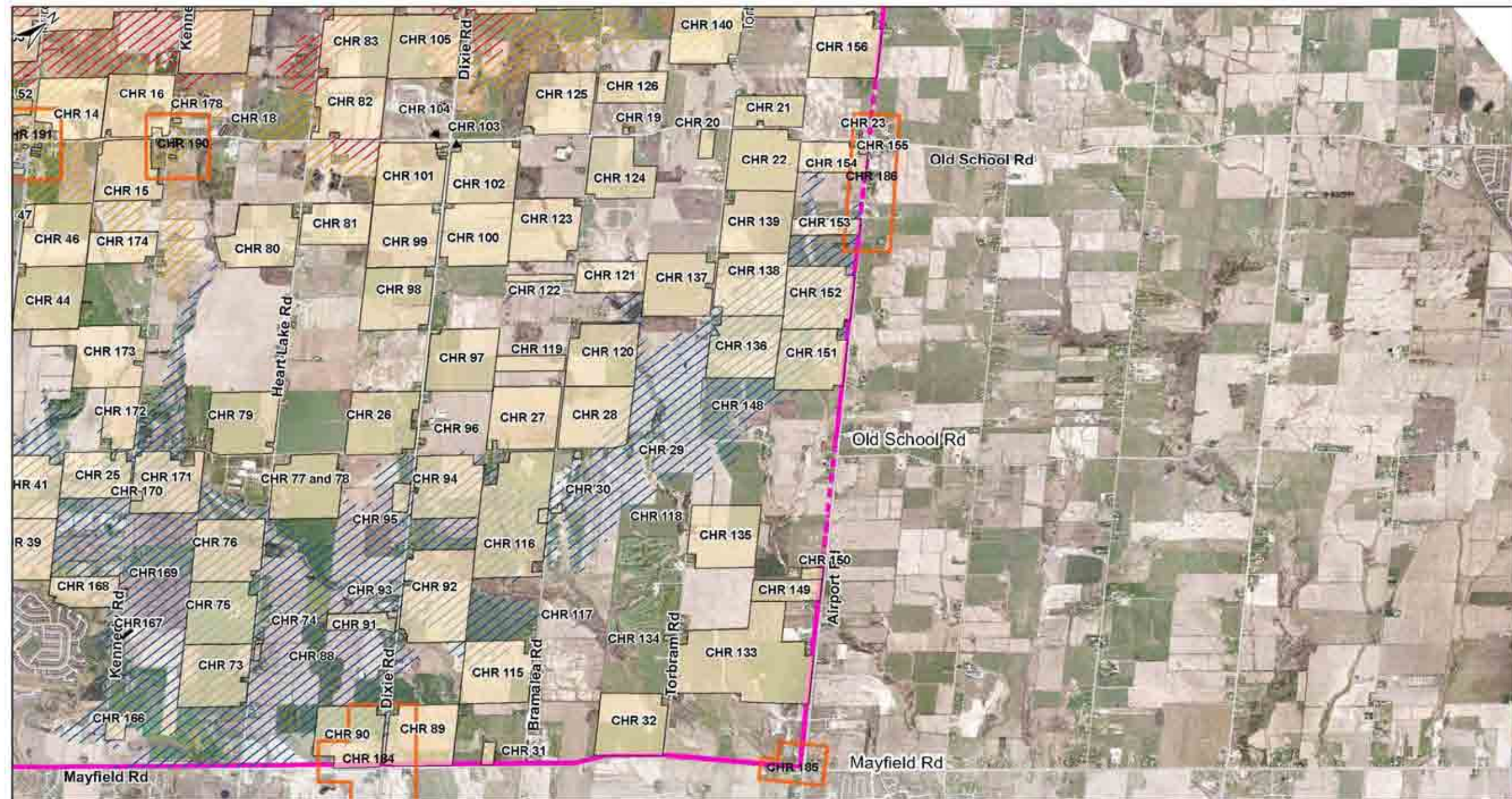


Figure 3-5: Sheet 4 of the Zone 6 Reservoir and Feedermain Class EA Study Area

	Study Area	On Grade and Buried Reservoir	Historic Settlement Centres
	Cultural Heritage Resource Identified on Heritage Inventory	Elevated Tank	Historic Settlement Centres
	Cultural Heritage Resource Designated Under Ontario Heritage Act	Above Grade Reservoir	

Sheet 4

0 0.35 0.7 1.4
Kilometers

DATE: June 2nd, 2009 FILE: 08EA219_BH_sheet4