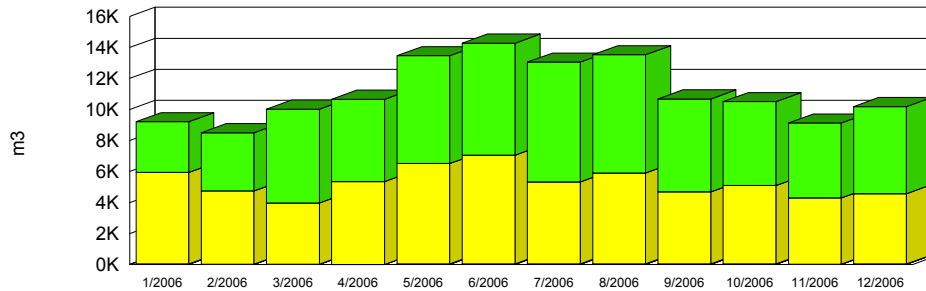


**TOTAL Well Production Over 12 Months**



**Wells 1, 2, 3 & 4**

Month	TOTAL	Max Day	Min Day	Avg Day
Jan-06	9,204.0m3	577.0m3 22-Jan-06	9.3m3 17-Jan-06	296.9m3
Feb-06	8,498.3m3	645.3m3 6-Feb-06	0.0m3 7-Feb-06	303.5m3
Mar-06	10,013.5m3	680.5m3 27-Mar-06	13.1m3 23-Mar-06	323.0m3
Apr-06	10,659.0m3	683.6m3 16-Apr-06	0.0m3 17-Apr-06	355.3m3
May-06	13,460.9m3	903.0m3 28-May-06	0.0m3 13-May-06	434.2m3
Jun-06	14,271.2m3	904.8m3 18-Jun-06	161.5m3 1-Jun-06	475.7m3
Jul-06	13,054.7m3	907.2m3 7-Jul-06	172.7m3 14-Jul-06	421.1m3
Aug-06	13,525.8m3	776.6m3 12-Aug-06	244.6m3 28-Aug-06	436.3m3
Sep-06	10,681.5m3	725.3m3 7-Sep-06	153.5m3 22-Sep-06	356.0m3
Oct-06	10,502.2m3	516.6m3 12-Oct-06	0.0m3 31-Oct-06	338.8m3
Nov-06	9,121.1m3	502.8m3 4-Nov-06	0.0m3 1-Nov-06	304.0m3
Dec-06	10,188.9m3	572.3m3 14-Dec-06	61.2m3 15-Dec-06	328.7m3

**YEAR TOTAL:** 133,181.0m3  
**Per Capita:** 85.92m3

**Yearly Avg:** 364.88m3/d  
**Per Capita:** 0.24m3/d

**Maximum Month:** 14,271.2m3 Jun-06  
**Per Capita:** 9.21m3

**Minimum Month:** 8,498.3m3 Feb-06

**Average Month:** 11,098.4m3

**Maximum Day:** 907.2m3 7-Jul-06  
**Per Capita:** 0.59m3

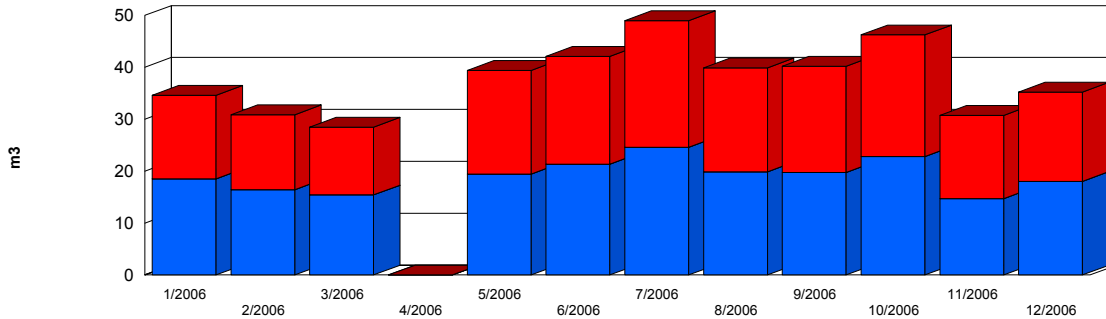
**Maximum 3 Consecutive Days:**  
743.0m3 16-Jun-06  
432.5m3 17-Jun-06  
904.8m3 18-Jun-06

**Running 3 Day Total:** 2,080.4m3  
**Per Capita:** 1.34m3

Equivalent Served Population 1550

**Alton WPS. #1  
2006**

**Well Production Over 12 Months**



Month	Well #1	Well #2	TOTAL
<b>Jan-06</b>	18.5m3	16.1m3	34.6m3
<b>Feb-06</b>	16.4m3	14.5m3	30.9m3
<b>Mar-06</b>	15.4m3	13.0m3	28.4m3
<b>Apr-06</b>	0.0m3	0.0m3	0.0m3
<b>May-06</b>	19.5m3	20.0m3	39.4m3
<b>Jun-06</b>	21.3m3	20.7m3	42.1m3
<b>Jul-06</b>	24.6m3	24.4m3	49.0m3
<b>Aug-06</b>	19.9m3	20.0m3	39.9m3
<b>Sep-06</b>	19.7m3	20.5m3	40.2m3
<b>Oct-06</b>	22.8m3	23.4m3	46.3m3
<b>Nov-06</b>	14.7m3	16.0m3	30.8m3
<b>Dec-06</b>	18.0m3	17.2m3	35.2m3
<b>YEAR TOTAL:</b>	<b>211.0m3</b>	<b>205.9m3</b>	<b>416.8m3</b>
<b>Maximum Month:</b>	<b>24.6m3</b>	<b>24.4m3</b>	<b>49.0m3</b>
	<i>Jul-06</i>	<i>Jul-06</i>	<i>Jul-06</i>
<b>Minimum Month:</b>	<b>0.0m3</b>	<b>0.0m3</b>	<b>0.0m3</b>
	<i>Apr-06</i>	<i>Apr-06</i>	<i>Apr-06</i>
<b>Average Month:</b>	<b>17.6m3</b>	<b>17.2m3</b>	<b>34.7m3</b>

### Maximum Daily Well Pumpage

Month	Well #1 Max Day	Well #2 Max Day
Jan-06	4.8m3 2-Jan-06	4.1m3 2-Jan-06
Feb-06	4.6m3 6-Feb-06	3.9m3 27-Feb-06
Mar-06	7.2m3 13-Mar-06	4.6m3 20-Mar-06
Apr-06	0.0m3 13-Mar-06	0.0m3 20-Mar-06
May-06	5.4m3 23-May-06	5.4m3 8-May-06
Jun-06	6.0m3 5-Jun-06	5.9m3 5-Jun-06
Jul-06	5.3m3 4-Jul-06	5.4m3 4-Jul-06
Aug-06	5.5m3 8-Aug-06	5.4m3 28-Aug-06
Sep-06	5.2m3 11-Sep-06	5.3m3 18-Sep-06
Oct-06	5.8m3 2-Oct-06	5.3m3 16-Oct-06
Nov-06	4.4m3 6-Nov-06	4.4m3 6-Nov-06
Dec-06	5.0m3 11-Dec-06	4.9m3 18-Dec-06
<b>Maximum Day:</b>	<b>7.2m3 13-Mar-06</b>	<b>5.9m3 5-Jun-06</b>
<b>Daily Cap:</b>	<b>1,309.0m3</b>	<b>1,309.0m3</b>
<b>Design Rate:</b>	<b>15.2L/s</b>	<b>15.2L/s</b>

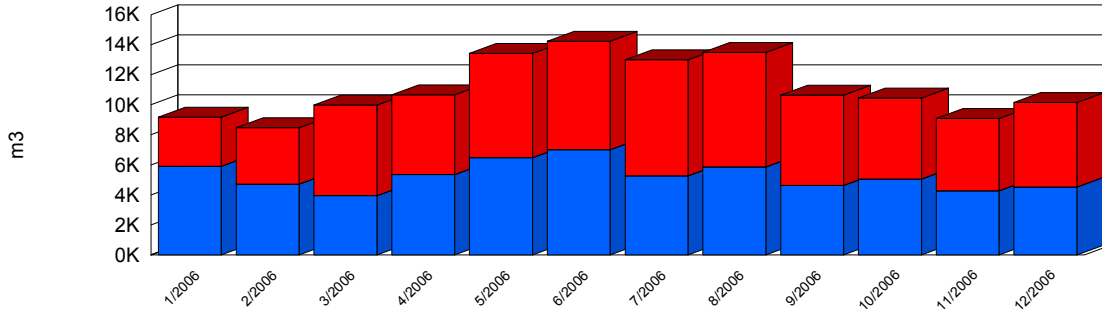
### Minimum Daily Well Pumpage

Month	Well #1 Min Day	Well #2 Min Day
Jan-06	0.0m3 5-Jan-06	0.0m3 5-Jan-06
Feb-06	0.0m3 2-Feb-06	0.0m3 2-Feb-06
Mar-06	0.0m3 2-Mar-06	0.0m3 2-Mar-06
Apr-06	0.0m3 1-Apr-06	0.0m3 1-Apr-06
May-06	0.0m3 16-May-06	0.0m3 16-May-06
Jun-06	0.0m3 7-Jun-06	0.0m3 7-Jun-06
Jul-06	0.0m3 2-Jul-06	0.0m3 2-Jul-06
Aug-06	0.0m3 3-Aug-06	0.0m3 3-Aug-06
Sep-06	0.0m3 10-Sep-06	0.0m3 10-Sep-06
Oct-06	0.0m3 13-Oct-06	0.0m3 13-Oct-06
Nov-06	0.0m3 5-Nov-06	0.0m3 5-Nov-06
Dec-06	0.0m3 14-Dec-06	0.0m3 14-Dec-06

### Average Daily Well Pumpage

Month	Well #1 Avg Day	Well #2 Avg Day
<b>Maximum Avg:</b>	<b>0.79m3 Jul-06</b>	<b>0.79m3 Jul-06</b>

**Well Production Over 12 Months**



Month	Well #3	Well #4	TOTAL
<b>Jan-06</b>	5,900.5m3	3,268.9m3	9,169.3m3
<b>Feb-06</b>	4,711.1m3	3,756.4m3	8,467.4m3
<b>Mar-06</b>	3,946.4m3	6,038.7m3	9,985.1m3
<b>Apr-06</b>	5,355.0m3	5,304.0m3	10,659.0m3
<b>May-06</b>	6,474.1m3	6,947.4m3	13,421.5m3
<b>Jun-06</b>	7,012.1m3	7,217.0m3	14,229.1m3
<b>Jul-06</b>	5,273.9m3	7,731.8m3	13,005.7m3
<b>Aug-06</b>	5,868.1m3	7,617.8m3	13,485.9m3
<b>Sep-06</b>	4,641.5m3	5,999.7m3	10,641.3m3
<b>Oct-06</b>	5,047.2m3	5,408.8m3	10,455.9m3
<b>Nov-06</b>	4,262.8m3	4,827.5m3	9,090.3m3
<b>Dec-06</b>	4,528.8m3	5,624.8m3	10,153.7m3
<b>YEAR TOTAL:</b>	<b>63,021.4m3</b>	<b>69,742.8m3</b>	<b>132,764.2m3</b>
<b>Maximum Month:</b>	<b>7,012.1m3</b> <i>Jun-06</i>	<b>7,731.8m3</b> <i>Jul-06</i>	<b>14,229.1m3</b> <i>Jun-06</i>
<b>Minimum Month:</b>	<b>3,946.4m3</b> <i>Mar-06</i>	<b>3,268.9m3</b> <i>Jan-06</i>	<b>8,467.4m3</b> <i>Feb-06</i>
<b>Average Month:</b>	<b>5,251.8m3</b>	<b>5,811.9m3</b>	<b>11,063.7m3</b>

### Maximum Daily Well Pumpage

Month	Well #3 Max Day	Well #4 Max Day
Jan-06	570.6m3 1-Jan-06	577.0m3 22-Jan-06
Feb-06	606.0m3 26-Feb-06	610.4m3 4-Feb-06
Mar-06	591.9m3 5-Mar-06	602.9m3 22-Mar-06
Apr-06	639.8m3 18-Apr-06	683.6m3 16-Apr-06
May-06	686.3m3 24-May-06	903.0m3 28-May-06
Jun-06	729.0m3 16-Jun-06	904.8m3 18-Jun-06
Jul-06	518.1m3 16-Jul-06	890.8m3 7-Jul-06
Aug-06	591.3m3 30-Aug-06	776.6m3 12-Aug-06
Sep-06	544.3m3 2-Sep-06	668.9m3 7-Sep-06
Oct-06	506.1m3 14-Oct-06	516.4m3 29-Oct-06
Nov-06	502.8m3 4-Nov-06	500.6m3 12-Nov-06
Dec-06	504.7m3 28-Dec-06	519.5m3 14-Dec-06
<b>Maximum Day:</b>	<b>729.0m3 16-Jun-06</b>	<b>904.8m3 18-Jun-06</b>
<b>Daily Cap:</b>	<b>1,047.0m3</b>	<b>1,047.0m3</b>
<b>Design Rate:</b>	<b>12.1L/s</b>	<b>12.1L/s</b>

### Minimum Daily Well Pumpage

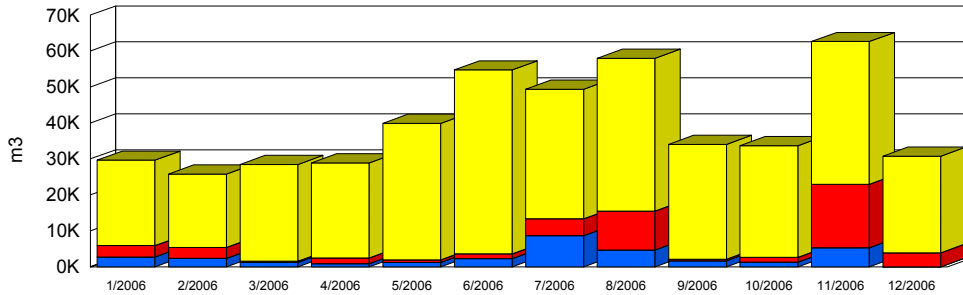
Month	Well #3 Min Day	Well #4 Min Day
Jan-06	0.0m3 19-Jan-06	0.0m3 14-Jan-06
Feb-06	0.0m3 5-Feb-06	0.0m3 7-Feb-06
Mar-06	0.0m3 17-Mar-06	0.0m3 23-Mar-06
Apr-06	0.0m3 5-Apr-06	0.0m3 9-Apr-06
May-06	0.0m3 31-May-06	0.0m3 18-May-06
Jun-06	0.0m3 4-Jun-06	0.0m3 1-Jun-06
Jul-06	0.0m3 15-Jul-06	0.0m3 16-Jul-06
Aug-06	0.0m3 6-Aug-06	0.0m3 4-Aug-06
Sep-06	0.0m3 3-Sep-06	0.0m3 9-Sep-06
Oct-06	0.0m3 1-Oct-06	0.0m3 5-Oct-06
Nov-06	0.0m3 1-Nov-06	0.0m3 1-Nov-06
Dec-06	0.0m3 22-Dec-06	0.0m3 2-Dec-06

**Alton WPS. #2**  
**2006**

Average Daily Well Pumpage

Month	Well #3 Avg Day	Well #4 Avg Day
Jan-06	190.3m3	105.4m3
Feb-06	168.3m3	134.2m3
Mar-06	127.3m3	194.8m3
Apr-06	178.5m3	176.8m3
May-06	208.8m3	224.1m3
Jun-06	233.7m3	240.6m3
Jul-06	170.1m3	249.4m3
Aug-06	189.3m3	245.7m3
Sep-06	154.7m3	200.0m3
Oct-06	162.8m3	174.5m3
Nov-06	142.1m3	160.9m3
Dec-06	146.1m3	181.4m3
<b>Maximum Avg:</b>	<b>233.74m3</b> <i>Jun-06</i>	<b>249.41m3</b> <i>Jul-06</i>

**TOTAL Well Production Over 12 Months**



**Wells 2, 3 & 4**

Month	TOTAL	Max Day	Min Day	Avg Day
Jan-06	29,662.9m3	1,303.6m3 7-Jan-06	490.8m3 9-Jan-06	956.9m3
Feb-06	25,767.7m3	1,227.6m3 18-Feb-06	164.6m3 27-Feb-06	920.3m3
Mar-06	28,438.6m3	1,257.7m3 19-Mar-06	217.2m3 17-Mar-06	917.4m3
Apr-06	28,887.5m3	1,522.6m3 29-Apr-06	0.0m3 16-Apr-06	962.9m3
May-06	39,866.6m3	2,055.7m3 28-May-06	647.2m3 23-May-06	1,286.0m3
Jun-06	54,755.6m3	3,447.2m3 23-Jun-06	1,154.0m3 5-Jun-06	1,825.2m3
Jul-06	49,410.7m3	2,939.0m3 8-Jul-06	973.2m3 13-Jul-06	1,593.9m3
Aug-06	58,019.4m3	2,878.8m3 18-Aug-06	984.6m3 2-Aug-06	1,871.6m3
Sep-06	34,016.8m3	1,542.1m3 4-Sep-06	230.3m3 20-Sep-06	1,133.9m3
Oct-06	33,699.8m3	2,598.4m3 9-Oct-06	466.0m3 16-Oct-06	1,087.1m3
Nov-06	62,639.4m3	6,670.5m3 4-Nov-06	130.4m3 2-Nov-06	2,088.0m3
Dec-06	30,743.1m3	1,425.9m3 31-Dec-06	480.3m3 30-Dec-06	991.7m3

**YEAR TOTAL:** 475,908.2m3  
**Per Capita:** 86.99m3

**Yearly Avg:** 1,303.86m3/d  
**Per Capita:** 0.24m3/d

**Maximum Month:** 62,639.4m3 Nov-06  
**Per Capita:** 11.45m3

**Minimum Month:** 25,767.7m3 Feb-06

**Average Month:** 39,659.0m3

**Maximum Day:** 6,670.5m3 4-Nov-06  
**Per Capita:** 1.22m3

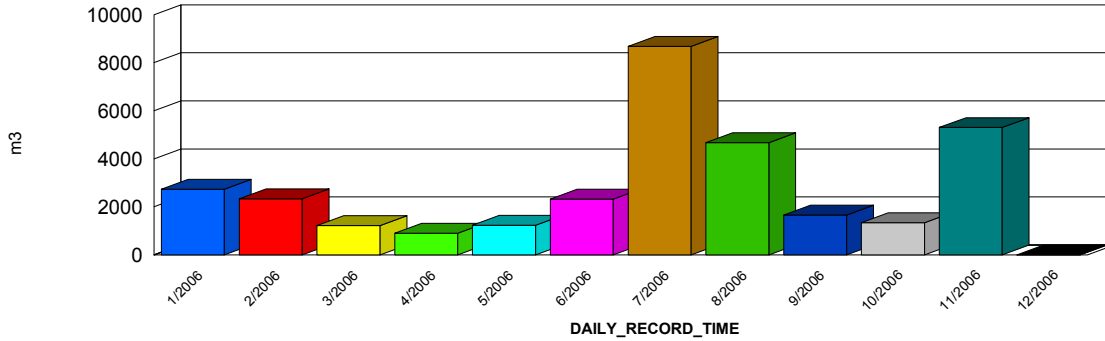
**Maximum 3 Consecutive Days:**  
6,670.5m3 4-Nov-06  
6,335.1m3 5-Nov-06  
6,411.1m3 6-Nov-06

**Running 3 Day Total:** 19,416.8m3  
**Per Capita:** 3.55m3

**Equivalent Served Population** 5471

**Caledon East WPS. #2  
2006**

**Well Production Over 12 Months**



Month	Well #2	TOTAL
<b>Jan-06</b>	2,736.2m3	2,736.2m3
<b>Feb-06</b>	2,340.2m3	2,340.2m3
<b>Mar-06</b>	1,218.0m3	1,218.0m3
<b>Apr-06</b>	902.0m3	902.0m3
<b>May-06</b>	1,237.2m3	1,237.2m3
<b>Jun-06</b>	2,318.9m3	2,318.9m3
<b>Jul-06</b>	8,677.4m3	8,677.4m3
<b>Aug-06</b>	4,675.3m3	4,675.3m3
<b>Sep-06</b>	1,660.7m3	1,660.7m3
<b>Oct-06</b>	1,338.3m3	1,338.3m3
<b>Nov-06</b>	5,304.0m3	5,304.0m3
<b>Dec-06</b>	0.0m3	0.0m3
<b>YEAR TOTAL:</b>	<b>32,408.3m3</b>	<b>32,408.3m3</b>
<b>Maximum Month:</b>	<b>8,677.4m3</b> <i>Jul-06</i>	<b>8,677.4m3</b> <i>Jul-06</i>
<b>Minimum Month:</b>	<b>0.0m3</b> <i>Dec-06</i>	<b>0.0m3</b> <i>Dec-06</i>
<b>Average Month:</b>	<b>2,700.7m3</b>	<b>2,700.7m3</b>

**Caledon East WPS. #2  
2006**

Maximum Daily Well Pumpage

Month	Well #2 Max Day
Jan-06	432.7m3 5-Jan-06
Feb-06	402.4m3 7-Feb-06
Mar-06	298.8m3 7-Mar-06
Apr-06	313.8m3 21-Apr-06
May-06	330.0m3 4-May-06
Jun-06	980.9m3 23-Jun-06
Jul-06	810.1m3 8-Jul-06
Aug-06	550.4m3 23-Aug-06
Sep-06	289.8m3 11-Sep-06
Oct-06	273.7m3 17-Oct-06
Nov-06	1,134.4m3 12-Nov-06
Dec-06	0.0m3 12-Nov-06

**Maximum Day:** 1,134.4m3 12-Nov-06

**Daily Cap:** 4,500.0m3 Combined Max

**Design Rate:** 19.0L/s

Minimum Daily Well Pumpage

Month	Well #2 Min Day
Jan-06	0.0m3 1-Jan-06
Feb-06	0.0m3 2-Feb-06
Mar-06	0.0m3 19-Mar-06
Apr-06	0.0m3 8-Apr-06
May-06	0.0m3 13-May-06
Jun-06	0.0m3 13-Jun-06
Jul-06	0.0m3 11-Jul-06
Aug-06	0.0m3 15-Aug-06
Sep-06	0.0m3 16-Sep-06
Oct-06	0.0m3 1-Oct-06
Nov-06	0.0m3 5-Nov-06
Dec-06	0.0m3 4-Dec-06

**Caledon East WPS. #2**  
**2006**

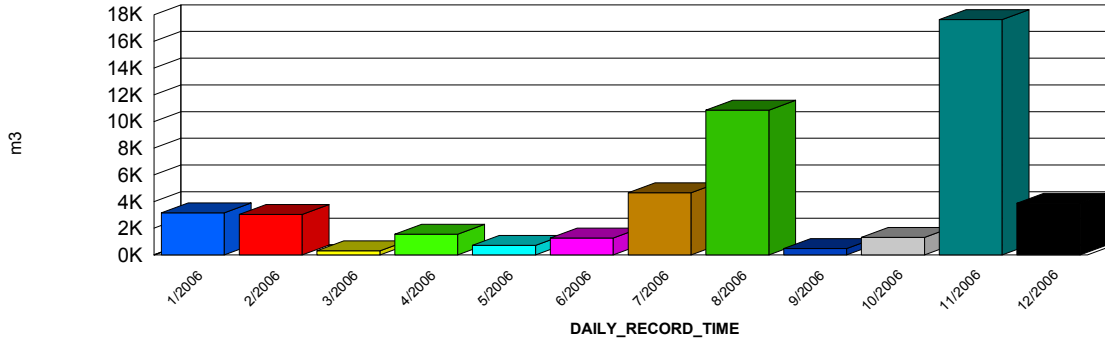
Average Daily Well Pumpage

Month	Well #2 Avg Day
Jan-06	88.3m3
Feb-06	83.6m3
Mar-06	39.3m3
Apr-06	30.1m3
May-06	39.9m3
Jun-06	77.3m3
Jul-06	279.9m3
Aug-06	150.8m3
Sep-06	55.4m3
Oct-06	43.2m3
Nov-06	176.8m3
Dec-06	0.0m3

Maximum Avg: **279.92m3** Jul-06

**Caledon East WPS. #3  
2006**

**Well Production Over 12 Months**



Month	Well #3	TOTAL
<b>Jan-06</b>	3,161.7m3	3,161.7m3
<b>Feb-06</b>	3,045.6m3	3,045.6m3
<b>Mar-06</b>	324.3m3	324.3m3
<b>Apr-06</b>	1,545.4m3	1,545.4m3
<b>May-06</b>	712.2m3	712.2m3
<b>Jun-06</b>	1,266.9m3	1,266.9m3
<b>Jul-06</b>	4,661.8m3	4,661.8m3
<b>Aug-06</b>	10,849.0m3	10,849.0m3
<b>Sep-06</b>	482.8m3	482.8m3
<b>Oct-06</b>	1,309.2m3	1,309.2m3
<b>Nov-06</b>	17,633.9m3	17,633.9m3
<b>Dec-06</b>	3,875.5m3	3,875.5m3
<b>YEAR TOTAL:</b>	<b>48,868.2m3</b>	<b>48,868.2m3</b>
<b>Maximum Month:</b>	<b>17,633.9m3</b> <i>Nov-06</i>	<b>17,633.9m3</b> <i>Nov-06</i>
<b>Minimum Month:</b>	<b>324.3m3</b> <i>Mar-06</i>	<b>324.3m3</b> <i>Mar-06</i>
<b>Average Month:</b>	<b>4,072.4m3</b>	<b>4,072.4m3</b>

**Caledon East WPS. #3  
2006**

Maximum Daily Well Pumpage

Month	Well #3 Max Day
Jan-06	656.5m3 5-Jan-06
Feb-06	610.6m3 7-Feb-06
Mar-06	43.8m3 20-Mar-06
Apr-06	1,137.8m3 15-Apr-06
May-06	395.6m3 18-May-06
Jun-06	406.3m3 6-Jun-06
Jul-06	880.4m3 5-Jul-06
Aug-06	1,111.4m3 18-Aug-06
Sep-06	100.7m3 14-Sep-06
Oct-06	385.7m3 4-Oct-06
Nov-06	2,556.6m3 4-Nov-06
Dec-06	448.0m3 7-Dec-06

**Maximum Day:** 2,556.6m3 4-Nov-06

**Daily Cap:** 4,500.0m3 Combined Max

**Design Rate:** 30.3L/s

Minimum Daily Well Pumpage

Month	Well #3 Min Day
Jan-06	0.0m3 7-Jan-06
Feb-06	0.0m3 5-Feb-06
Mar-06	0.0m3 18-Mar-06
Apr-06	0.0m3 4-Apr-06
May-06	0.0m3 4-May-06
Jun-06	0.0m3 8-Jun-06
Jul-06	0.0m3 15-Jul-06
Aug-06	0.0m3 6-Aug-06
Sep-06	0.0m3 3-Sep-06
Oct-06	0.0m3 3-Oct-06
Nov-06	0.0m3 11-Nov-06
Dec-06	0.0m3 2-Dec-06

**Caledon East WPS. #3**  
**2006**

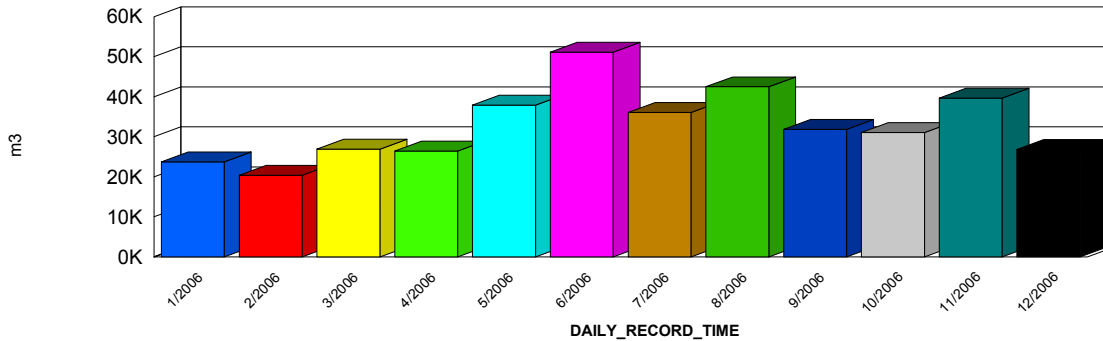
Average Daily Well Pumpage

Month	Well #3 Avg Day
Jan-06	102.0m3
Feb-06	108.8m3
Mar-06	10.5m3
Apr-06	51.5m3
May-06	23.0m3
Jun-06	42.2m3
Jul-06	150.4m3
Aug-06	350.0m3
Sep-06	16.1m3
Oct-06	42.2m3
Nov-06	587.8m3
Dec-06	125.0m3

**Maximum Avg: 587.80m3 Nov-06**

**Caledon East WPS. #4  
2006**

**Well Production Over 12 Months**



Month	Well #4	TOTAL
<b>Jan-06</b>	23,765.0m3	23,765.0m3
<b>Feb-06</b>	20,381.9m3	20,381.9m3
<b>Mar-06</b>	26,896.3m3	26,896.3m3
<b>Apr-06</b>	26,440.1m3	26,440.1m3
<b>May-06</b>	37,917.3m3	37,917.3m3
<b>Jun-06</b>	51,169.8m3	51,169.8m3
<b>Jul-06</b>	36,071.5m3	36,071.5m3
<b>Aug-06</b>	42,495.1m3	42,495.1m3
<b>Sep-06</b>	31,873.3m3	31,873.3m3
<b>Oct-06</b>	31,052.3m3	31,052.3m3
<b>Nov-06</b>	39,701.5m3	39,701.5m3
<b>Dec-06</b>	26,867.7m3	26,867.7m3
<b>YEAR TOTAL:</b>	<b>394,631.7m3</b>	<b>394,631.7m3</b>
<b>Maximum Month:</b>	<b>51,169.8m3</b> <i>Jun-06</i>	<b>51,169.8m3</b> <i>Jun-06</i>
<b>Minimum Month:</b>	<b>20,381.9m3</b> <i>Feb-06</i>	<b>20,381.9m3</b> <i>Feb-06</i>
<b>Average Month:</b>	<b>32,886.0m3</b>	<b>32,886.0m3</b>

**Caledon East WPS. #4  
2006**

Maximum Daily Well Pumpage

Month	Well #4 Max Day
Jan-06	1,303.6m3 7-Jan-06
Feb-06	1,227.6m3 18-Feb-06
Mar-06	1,257.7m3 19-Mar-06
Apr-06	1,522.6m3 29-Apr-06
May-06	2,055.7m3 28-May-06
Jun-06	3,358.0m3 25-Jun-06
Jul-06	2,129.0m3 8-Jul-06
Aug-06	2,287.1m3 12-Aug-06
Sep-06	1,542.1m3 4-Sep-06
Oct-06	2,598.4m3 9-Oct-06
Nov-06	3,836.8m3 8-Nov-06
Dec-06	1,425.9m3 31-Dec-06

**Maximum Day:** 3,836.8m3 8-Nov-06

**Daily Cap:** 4,500.0m3 Combined Max

**Design Rate:** 44.3L/s

Minimum Daily Well Pumpage

Month	Well #4 Min Day
Jan-06	0.0m3 10-Jan-06
Feb-06	0.0m3 23-Feb-06
Mar-06	179.1m3 17-Mar-06
Apr-06	0.0m3 16-Apr-06
May-06	151.7m3 18-May-06
Jun-06	956.5m3 30-Jun-06
Jul-06	397.0m3 5-Jul-06
Aug-06	499.1m3 2-Aug-06
Sep-06	168.5m3 20-Sep-06
Oct-06	191.1m3 30-Oct-06
Nov-06	0.0m3 11-Nov-06
Dec-06	324.1m3 30-Dec-06

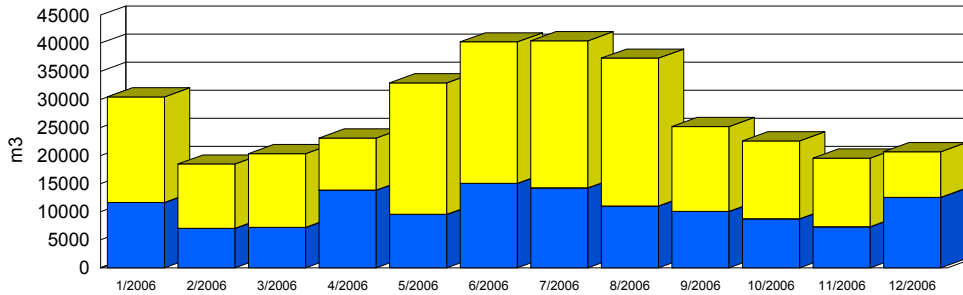
**Caledon East WPS. #4**  
**2006**

Average Daily Well Pumpage

Month	Well #4 Avg Day
Jan-06	766.6m3
Feb-06	727.9m3
Mar-06	867.6m3
Apr-06	881.3m3
May-06	1,223.1m3
Jun-06	1,705.7m3
Jul-06	1,163.6m3
Aug-06	1,370.8m3
Sep-06	1,062.4m3
Oct-06	1,001.7m3
Nov-06	1,323.4m3
Dec-06	866.7m3

**Maximum Avg: 1,705.66m3 Jun-06**

**TOTAL Well Production Over 12 Months**



**Wells 3A, 3B & 4**

Month	TOTAL	Max Day	Min Day	Avg Day
Jan-06	30,432.9m3	2,070.5m3 9-Jan-06	217.8m3 20-Jan-06	981.7m3
Feb-06	18,479.2m3	842.0m3 23-Feb-06	221.0m3 28-Feb-06	660.0m3
Mar-06	20,329.4m3	949.5m3 11-Mar-06	374.9m3 15-Mar-06	655.8m3
Apr-06	23,116.4m3	1,630.6m3 30-Apr-06	384.0m3 12-Apr-06	770.5m3
May-06	32,928.5m3	1,757.9m3 6-May-06	359.4m3 5-May-06	1,062.2m3
Jun-06	40,233.4m3	2,775.4m3 25-Jun-06	605.0m3 7-Jun-06	1,341.1m3
Jul-06	40,445.9m3	2,790.7m3 8-Jul-06	536.7m3 24-Jul-06	1,304.7m3
Aug-06	37,345.3m3	2,388.5m3 13-Aug-06	344.9m3 4-Aug-06	1,204.7m3
Sep-06	25,159.0m3	1,346.1m3 1-Sep-06	234.5m3 29-Sep-06	838.6m3
Oct-06	22,611.7m3	1,332.5m3 2-Oct-06	186.9m3 11-Oct-06	729.4m3
Nov-06	19,547.3m3	1,057.2m3 10-Nov-06	182.9m3 3-Nov-06	651.6m3
Dec-06	20,682.2m3	1,051.4m3 31-Dec-06	107.9m3 23-Dec-06	667.2m3

**YEAR TOTAL:** 331,311.2m3 **Yearly Avg:** 907.70m3/d  
**Per Capita:** 113.54m3 **Per Capita:** 0.31m3/d

**Maximum Month:** 40,445.9m3 Jul-06  
**Per Capita:** 13.86m3

**Minimum Month:** 18,479.2m3 Feb-06

**Average Month:** 27,609.3m3

**Maximum Day:** 2,790.7m3 8-Jul-06  
**Per Capita:** 0.96m3

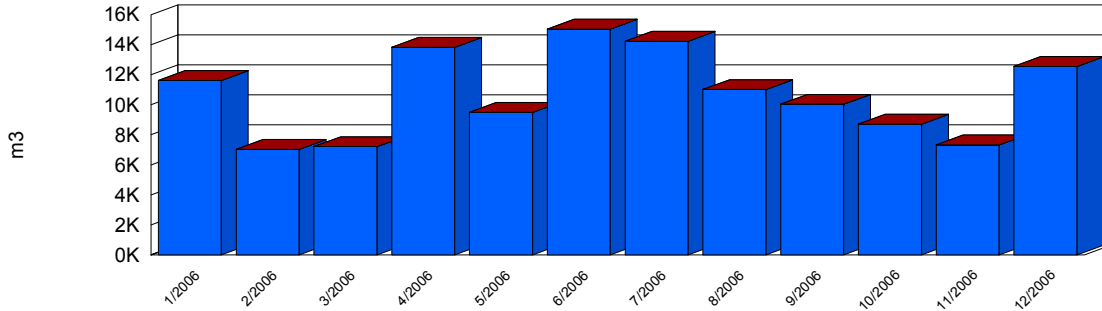
**Maximum 3 Consecutive Days:** 2,068.4m3 23-Jun-06  
 1,846.8m3 24-Jun-06  
 2,775.4m3 25-Jun-06

**Running 3 Day Total:** 6,690.6m3  
**Per Capita:** 2.29m3

**Equivalent Served Population** 2918

**Caledon Village WPS. #3  
2006**

**Well Production Over 12 Months**



Month	Well #3	Well #3A	TOTAL
<b>Jan-06</b>	11,618.9m3	0.0m3	11,618.9m3
<b>Feb-06</b>	7,036.7m3	0.0m3	7,036.7m3
<b>Mar-06</b>	7,211.8m3	0.0m3	7,211.8m3
<b>Apr-06</b>	13,822.4m3	0.0m3	13,822.4m3
<b>May-06</b>	9,498.4m3	0.0m3	9,498.4m3
<b>Jun-06</b>	15,032.7m3	0.0m3	15,032.7m3
<b>Jul-06</b>	14,222.2m3	0.0m3	14,222.2m3
<b>Aug-06</b>	11,013.6m3	0.0m3	11,013.6m3
<b>Sep-06</b>	10,036.8m3	0.0m3	10,036.8m3
<b>Oct-06</b>	8,708.2m3	0.0m3	8,708.2m3
<b>Nov-06</b>	7,335.2m3	0.0m3	7,335.2m3
<b>Dec-06</b>	12,546.6m3	0.0m3	12,546.6m3
<b>YEAR TOTAL:</b>	<b>128,083.7m3</b>	<b>0.0m3</b>	<b>128,083.7m3</b>
<b>Maximum Month:</b>	<b>15,032.7m3</b> <i>Jun-06</i>	<b>0.0m3</b>	<b>15,032.7m3</b> <i>Jun-06</i>
<b>Minimum Month:</b>	<b>7,036.7m3</b> <i>Feb-06</i>	<b>0.0m3</b> <i>Jan-06</i>	<b>7,036.7m3</b> <i>Feb-06</i>
<b>Average Month:</b>	<b>10,673.6m3</b>	<b>0.0m3</b>	<b>10,673.6m3</b>

**Caledon Village WPS. #3  
2006**

**Maximum Daily Well Pumpage**

Month	Well #3 Max Day	Well #3A Max Day
Jan-06	1,070.9m3 2-Jan-06	0.0m3
Feb-06	354.9m3 22-Feb-06	0.0m3
Mar-06	671.9m3 30-Mar-06	0.0m3
Apr-06	846.6m3 13-Apr-06	0.0m3
May-06	683.4m3 28-May-06	0.0m3
Jun-06	1,049.2m3 25-Jun-06	0.0m3
Jul-06	1,078.2m3 8-Jul-06	0.0m3
Aug-06	894.8m3 13-Aug-06	0.0m3
Sep-06	804.3m3 15-Sep-06	0.0m3
Oct-06	495.4m3 2-Oct-06	0.0m3
Nov-06	589.4m3 2-Nov-06	0.0m3
Dec-06	1,041.9m3 31-Dec-06	0.0m3
<b>Maximum Day:</b>	<b>1,078.2m3 8-Jul-06</b>	<b>0.0m3</b>
<b>Daily Cap:</b>	<b>1,964.0m3</b>	<b>1,309.0.0m3</b>
<b>Design Rate:</b>	<b>22.7L/s</b>	

**Minimum Daily Well Pumpage**

Month	Well #3 Min Day	Well #3A Min Day
Jan-06	19.1m3 20-Jan-06	0.0m3 4-Jan-06
Feb-06	81.7m3 28-Feb-06	0.0m3 6-Feb-06
Mar-06	0.0m3 9-Mar-06	0.0m3 1-Mar-06
Apr-06	195.7m3 27-Apr-06	0.0m3 2-Apr-06
May-06	0.0m3 22-May-06	0.0m3 6-May-06
Jun-06	102.5m3 21-Jun-06	0.0m3 2-Jun-06
Jul-06	0.0m3 24-Jul-06	0.0m3 1-Jul-06
Aug-06	0.0m3 1-Aug-06	0.0m3 2-Aug-06
Sep-06	161.1m3 11-Sep-06	0.0m3 1-Sep-06
Oct-06	45.4m3 27-Oct-06	0.0m3 1-Oct-06
Nov-06	104.6m3 23-Nov-06	0.0m3 1-Nov-06
Dec-06	35.1m3 23-Dec-06	0.0m3 1-Dec-06

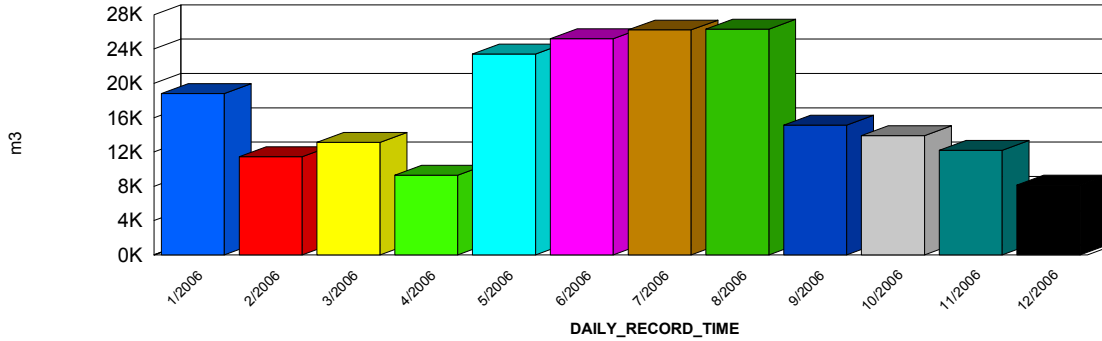
**Caledon Village WPS. #3  
2006**

Average Daily Well Pumpage

Month	Well #3 Avg Day	Well #3A Avg Day
Jan-06	374.8m3	0.0m3
Feb-06	251.3m3	0.0m3
Mar-06	232.6m3	0.0m3
Apr-06	460.7m3	0.0m3
May-06	306.4m3	0.0m3
Jun-06	501.1m3	0.0m3
Jul-06	458.8m3	0.0m3
Aug-06	355.3m3	0.0m3
Sep-06	334.6m3	0.0m3
Oct-06	280.9m3	0.0m3
Nov-06	244.5m3	0.0m3
Dec-06	404.7m3	0.0m3
<b>Maximum Avg:</b>	<b>501.09m3</b> Jun-06	<b>0.00m3</b>

# Caledon Village WPS. #4 2006

**Well Production Over 12 Months**



Month	Well #4	TOTAL
<b>Jan-06</b>	18,813.9m3	18,813.9m3
<b>Feb-06</b>	11,442.4m3	11,442.4m3
<b>Mar-06</b>	13,117.6m3	13,117.6m3
<b>Apr-06</b>	9,294.0m3	9,294.0m3
<b>May-06</b>	23,430.2m3	23,430.2m3
<b>Jun-06</b>	25,200.7m3	25,200.7m3
<b>Jul-06</b>	26,223.7m3	26,223.7m3
<b>Aug-06</b>	26,331.7m3	26,331.7m3
<b>Sep-06</b>	15,122.2m3	15,122.2m3
<b>Oct-06</b>	13,903.5m3	13,903.5m3
<b>Nov-06</b>	12,212.0m3	12,212.0m3
<b>Dec-06</b>	8,135.6m3	8,135.6m3
<b>YEAR TOTAL:</b>	<b>203,227.5m3</b>	<b>203,227.5m3</b>
<b>Maximum Month:</b>	<b>26,331.7m3</b> <i>Aug-06</i>	<b>26,331.7m3</b> <i>Aug-06</i>
<b>Minimum Month:</b>	<b>8,135.6m3</b> <i>Dec-06</i>	<b>8,135.6m3</b> <i>Dec-06</i>
<b>Average Month:</b>	<b>16,935.6m3</b>	<b>16,935.6m3</b>

**Caledon Village WPS. #4  
2006**

**Maximum Daily Well Pumpage**

Month	Well #4 Max Day
Jan-06	1,305.8m3 9-Jan-06
Feb-06	530.5m3 18-Feb-06
Mar-06	949.5m3 11-Mar-06
Apr-06	1,026.6m3 30-Apr-06
May-06	1,484.0m3 29-May-06
Jun-06	1,726.3m3 25-Jun-06
Jul-06	1,712.6m3 8-Jul-06
Aug-06	1,795.7m3 15-Aug-06
Sep-06	862.8m3 1-Sep-06
Oct-06	888.0m3 12-Oct-06
Nov-06	740.7m3 10-Nov-06
Dec-06	624.5m3 2-Dec-06

**Maximum Day:** 1,795.7m3 15-Aug-06

**Daily Cap:** 3,273.0m3

**Design Rate:** 37.9L/s

**Minimum Daily Well Pumpage**

Month	Well #4 Min Day
Jan-06	198.7m3 20-Jan-06
Feb-06	139.3m3 28-Feb-06
Mar-06	0.0m3 30-Mar-06
Apr-06	0.0m3 11-Apr-06
May-06	164.4m3 15-May-06
Jun-06	237.4m3 29-Jun-06
Jul-06	194.5m3 10-Jul-06
Aug-06	269.7m3 25-Aug-06
Sep-06	0.0m3 29-Sep-06
Oct-06	20.6m3 19-Oct-06
Nov-06	0.0m3 2-Nov-06
Dec-06	0.0m3 25-Dec-06

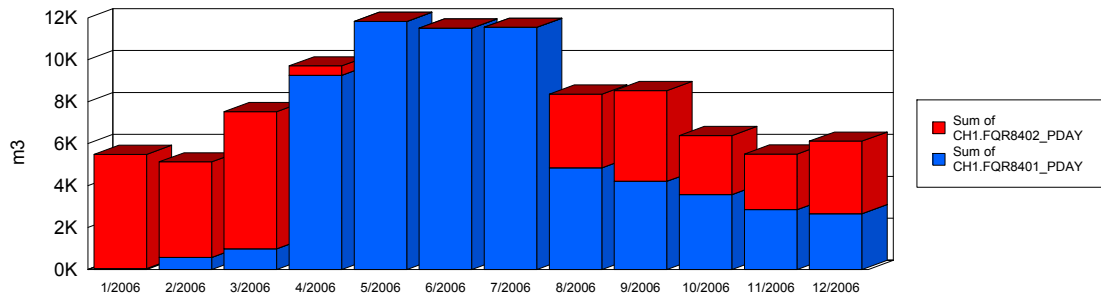
**Caledon Village WPS. #4**  
**2006**

Average Daily Well Pumpage

Month	Well #4 Avg Day
Jan-06	606.9m3
Feb-06	408.7m3
Mar-06	423.1m3
Apr-06	309.8m3
May-06	755.8m3
Jun-06	840.0m3
Jul-06	845.9m3
Aug-06	849.4m3
Sep-06	504.1m3
Oct-06	448.5m3
Nov-06	407.1m3
Dec-06	262.4m3

**Maximum Avg: 849.41m3 Aug-06**

**TOTAL Well Production Over 12 Months**



**Wells 1 & 2**

Month	TOTAL	Max Day	Min Day	Avg Day
Jan-06	5,485.1m3	335.9m3 30-Jan-06	30.3m3 6-Jan-06	176.9m3
Feb-06	5,130.6m3	408.1m3 17-Feb-06	0.0m3 14-Feb-06	183.2m3
Mar-06	7,525.6m3	644.9m3 9-Mar-06	15.2m3 4-Mar-06	242.8m3
Apr-06	9,705.1m3	1,096.9m3 6-Apr-06	0.0m3 4-Apr-06	323.5m3
May-06	11,826.3m3	1,454.4m3 25-May-06	0.0m3 14-May-06	381.5m3
Jun-06	11,503.5m3	750.5m3 23-Jun-06	129.3m3 1-Jun-06	383.5m3
Jul-06	11,545.6m3	497.9m3 5-Jul-06	0.0m3 31-Jul-06	372.4m3
Aug-06	8,356.4m3	495.9m3 12-Aug-06	0.0m3 1-Aug-06	269.6m3
Sep-06	8,525.8m3	470.6m3 18-Sep-06	188.1m3 12-Sep-06	284.2m3
Oct-06	6,382.7m3	295.5m3 7-Oct-06	111.0m3 27-Oct-06	205.9m3
Nov-06	5,501.7m3	315.4m3 3-Nov-06	0.0m3 2-Nov-06	183.4m3
Dec-06	6,117.5m3	283.3m3 10-Dec-06	76.9m3 3-Dec-06	197.3m3

**YEAR TOTAL:** 97,606.0m3  
**Per Capita:** 125.62m3

**Yearly Avg:** 267.41m3/d  
**Per Capita:** 0.34m3/d

**Maximum Month:** 11,826.3m3 May-06  
**Per Capita:** 15.22m3

**Minimum Month:** 5,130.6m3 Feb-06

**Average Month:** 8,133.8m3

**Maximum Day:** 1,454.4m3 25-May-06  
**Per Capita:** 1.87m3

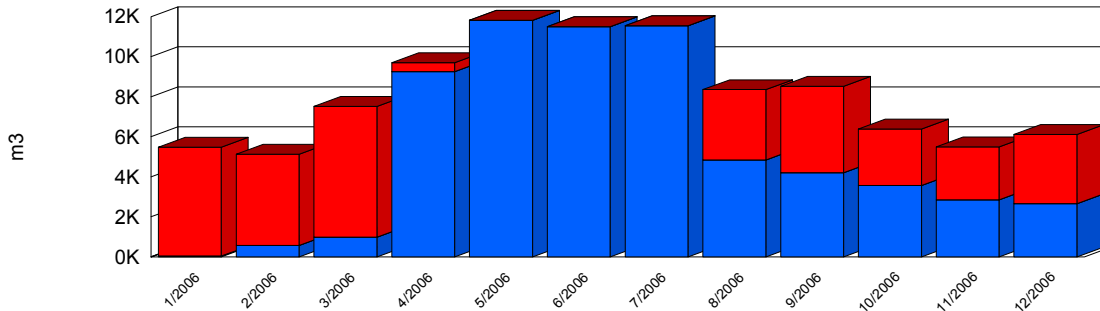
**Maximum 3 Consecutive Days:** 890.0m3 23-May-06  
1,425.6m3 24-May-06  
1,454.4m3 25-May-06

**Running 3 Day Total:** 3,770.0m3  
**Per Capita:** 4.85m3

**Equivalent Served Population:** 777

**Cheltenham WPS. #1  
2006**

**Well Production Over 12 Months**



Month	Well #1	Well #2	TOTAL
<b>Jan-06</b>	40.9m3	5,444.2m3	5,485.1m3
<b>Feb-06</b>	574.3m3	4,556.3m3	5,130.6m3
<b>Mar-06</b>	990.0m3	6,535.6m3	7,525.6m3
<b>Apr-06</b>	9,254.5m3	450.6m3	9,705.1m3
<b>May-06</b>	11,826.3m3	0.0m3	11,826.3m3
<b>Jun-06</b>	11,503.5m3	0.0m3	11,503.5m3
<b>Jul-06</b>	11,545.6m3	0.0m3	11,545.6m3
<b>Aug-06</b>	4,847.9m3	3,508.5m3	8,356.4m3
<b>Sep-06</b>	4,203.2m3	4,322.5m3	8,525.8m3
<b>Oct-06</b>	3,574.3m3	2,808.4m3	6,382.7m3
<b>Nov-06</b>	2,849.6m3	2,652.1m3	5,501.7m3
<b>Dec-06</b>	2,661.8m3	3,455.6m3	6,117.5m3
<b>YEAR TOTAL:</b>	<b>63,872.1m3</b>	<b>33,733.9m3</b>	<b>97,606.0m3</b>
<b>Maximum Month:</b>	<b>11,826.3m3</b> <i>May-06</i>	<b>6,535.6m3</b> <i>Mar-06</i>	<b>11,826.3m3</b> <i>May-06</i>
<b>Minimum Month:</b>	<b>40.9m3</b> <i>Jan-06</i>	<b>0.0m3</b> <i>May-06</i>	<b>5,130.6m3</b> <i>Feb-06</i>
<b>Average Month:</b>	<b>5,322.7m3</b>	<b>2,811.2m3</b>	<b>8,133.8m3</b>

**Cheltenham WPS. #1  
2006**

**Maximum Daily Well Pumpage**

Month	Well #1 Max Day	Well #2 Max Day
Jan-06	40.0m3 19-Jan-06	335.9m3 30-Jan-06
Feb-06	192.2m3 17-Feb-06	270.5m3 23-Feb-06
Mar-06	457.7m3 9-Mar-06	412.4m3 6-Mar-06
Apr-06	1,096.9m3 6-Apr-06	192.9m3 2-Apr-06
May-06	1,454.4m3 25-May-06	0.0m3 2-Apr-06
Jun-06	750.5m3 23-Jun-06	0.0m3 2-Apr-06
Jul-06	497.9m3 5-Jul-06	0.0m3 2-Apr-06
Aug-06	495.9m3 12-Aug-06	422.1m3 19-Aug-06
Sep-06	438.7m3 18-Sep-06	370.5m3 1-Sep-06
Oct-06	295.5m3 7-Oct-06	239.9m3 20-Oct-06
Nov-06	315.4m3 3-Nov-06	212.5m3 26-Nov-06
Dec-06	272.3m3 24-Dec-06	283.3m3 10-Dec-06
<b>Maximum Day:</b>	<b>1,454.4m3 25-May-06</b>	<b>422.1m3 19-Aug-06</b>
<b>Daily Cap:</b>	<b>500.0m3</b> Combined Max	<b>500.0m3</b> Combined Max
<b>Design Rate:</b>	5.8L/s	

**Minimum Daily Well Pumpage**

Month	Well #1 Min Day	Well #2 Min Day
Jan-06	0.0m3 1-Jan-06	30.3m3 6-Jan-06
Feb-06	0.0m3 1-Feb-06	0.0m3 14-Feb-06
Mar-06	0.0m3 28-Mar-06	15.2m3 4-Mar-06
Apr-06	0.0m3 1-Apr-06	0.0m3 6-Apr-06
May-06	0.0m3 14-May-06	0.0m3 4-May-06
Jun-06	129.3m3 1-Jun-06	0.0m3 1-Jun-06
Jul-06	0.0m3 31-Jul-06	0.0m3 1-Jul-06
Aug-06	0.0m3 16-Aug-06	0.0m3 22-Aug-06
Sep-06	0.0m3 1-Sep-06	0.0m3 2-Sep-06
Oct-06	0.0m3 4-Oct-06	0.0m3 1-Oct-06
Nov-06	0.0m3 1-Nov-06	0.0m3 8-Nov-06
Dec-06	0.0m3 2-Dec-06	0.0m3 1-Dec-06

**Cheltenham WPS. #1  
2006**

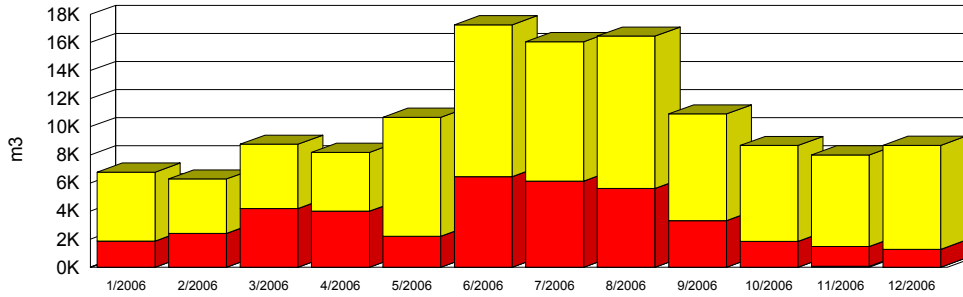
Average Daily Well Pumpage

Month	Well #1 Avg Day	Well #2 Avg Day
Jan-06	1.3m3	175.6m3
Feb-06	20.5m3	162.7m3
Mar-06	31.9m3	210.8m3
Apr-06	308.5m3	15.0m3
May-06	381.5m3	0.0m3
Jun-06	383.5m3	0.0m3
Jul-06	372.4m3	0.0m3
Aug-06	156.4m3	113.2m3
Sep-06	140.1m3	144.1m3
Oct-06	115.3m3	90.6m3
Nov-06	95.0m3	88.4m3
Dec-06	85.9m3	111.5m3

**Maximum Avg: 383.45m3 Jun-06**

**210.83m3 Mar-06**

**TOTAL Well Production Over 12 Months**



**Wells 1, 2 & 3**

Month	TOTAL	Max Day	Min Day	Avg Day
Jan-06	6,768.4m3	380.5m3 29-Jan-06	96.8m3 26-Jan-06	218.3m3
Feb-06	6,278.8m3	367.5m3 5-Feb-06	51.5m3 12-Feb-06	224.2m3
Mar-06	8,755.3m3	550.4m3 23-Mar-06	124.1m3 15-Mar-06	282.4m3
Apr-06	8,177.4m3	640.8m3 8-Apr-06	146.5m3 27-Apr-06	272.6m3
May-06	10,677.8m3	556.0m3 7-May-06	135.9m3 19-May-06	344.4m3
Jun-06	17,256.0m3	957.2m3 23-Jun-06	226.5m3 4-Jun-06	575.2m3
Jul-06	16,061.1m3	867.7m3 9-Jul-06	270.7m3 27-Jul-06	518.1m3
Aug-06	16,457.5m3	724.9m3 13-Aug-06	291.3m3 3-Aug-06	530.9m3
Sep-06	10,912.2m3	498.5m3 1-Sep-06	114.7m3 28-Sep-06	363.7m3
Oct-06	8,659.8m3	462.4m3 30-Oct-06	159.8m3 17-Oct-06	279.3m3
Nov-06	7,989.5m3	374.4m3 14-Nov-06	200.1m3 24-Nov-06	266.3m3
Dec-06	8,671.8m3	516.3m3 23-Dec-06	25.2m3 22-Dec-06	279.7m3

**YEAR TOTAL:** 126,665.5m3  
**Per Capita:** 105.73m3

**Yearly Avg:** 347.03m3/d  
**Per Capita:** 0.29m3/d

**Maximum Month:** 17,256.0m3 Jun-06  
**Per Capita:** 14.40m3

**Minimum Month:** 6,278.8m3 Feb-06

**Average Month:** 10,555.5m3

**Maximum Day:** 957.2m3 23-Jun-06  
**Per Capita:** 0.80m3

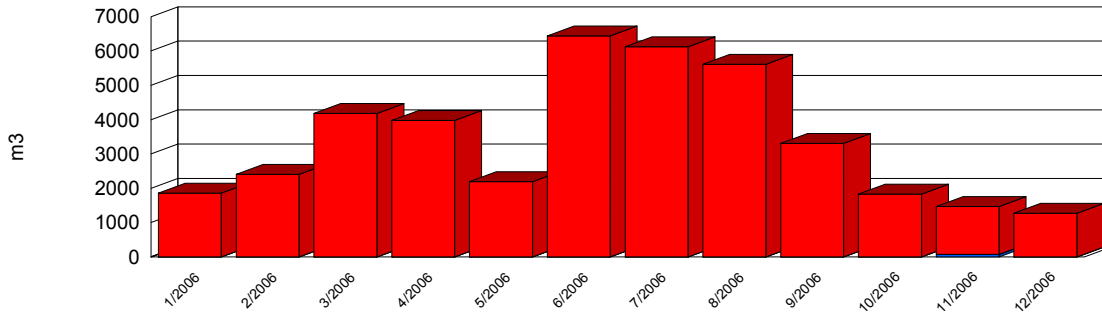
**Maximum 3 Consecutive Days:** 891.0m3 22-Jun-06  
957.2m3 23-Jun-06  
851.0m3 24-Jun-06

**Running 3 Day Total:** 2,699.2m3  
**Per Capita:** 2.25m3

Equivalent Served Population 1198

**Inglewood WPS. #1  
2006**

**Well Production Over 12 Months**



Month	Well #1	Well #2	TOTAL
<b>Jan-06</b>	0.0m3	1,858.8m3	1,858.8m3
<b>Feb-06</b>	0.0m3	2,408.0m3	2,408.0m3
<b>Mar-06</b>	0.0m3	4,181.9m3	4,181.9m3
<b>Apr-06</b>	0.0m3	3,981.1m3	3,981.1m3
<b>May-06</b>	0.0m3	2,192.2m3	2,192.2m3
<b>Jun-06</b>	0.0m3	6,443.7m3	6,443.7m3
<b>Jul-06</b>	0.0m3	6,127.0m3	6,127.0m3
<b>Aug-06</b>	0.0m3	5,615.4m3	5,615.4m3
<b>Sep-06</b>	0.0m3	3,309.9m3	3,309.9m3
<b>Oct-06</b>	0.0m3	1,832.2m3	1,832.2m3
<b>Nov-06</b>	71.9m3	1,398.5m3	1,470.5m3
<b>Dec-06</b>	0.0m3	1,271.5m3	1,271.5m3
<b>YEAR TOTAL:</b>	<b>71.9m3</b>	<b>40,620.1m3</b>	<b>40,692.0m3</b>
<b>Maximum Month:</b>	<b>71.9m3</b> <i>Nov-06</i>	<b>6,443.7m3</b> <i>Jun-06</i>	<b>6,443.7m3</b> <i>Jun-06</i>
<b>Minimum Month:</b>	<b>0.0m3</b> <i>Jan-06</i>	<b>1,271.5m3</b> <i>Dec-06</i>	<b>1,271.5m3</b> <i>Dec-06</i>
<b>Average Month:</b>	<b>6.0m3</b>	<b>3,385.0m3</b>	<b>3,391.0m3</b>

**Inglewood WPS. #1  
2006**

**Maximum Daily Well Pumpage**

Month	Well #1 Max Day	Well #2 Max Day
Jan-06	0.0m3	283.7m3 5-Jan-06
Feb-06	0.0m3	354.0m3 23-Feb-06
Mar-06	0.0m3	317.7m3 23-Mar-06
Apr-06	0.0m3	320.7m3 11-Apr-06
May-06	0.0m3	516.2m3 14-May-06
Jun-06	0.0m3	875.8m3 25-Jun-06
Jul-06	0.0m3	865.9m3 23-Jul-06
Aug-06	0.0m3	621.4m3 17-Aug-06
Sep-06	0.0m3	455.0m3 7-Sep-06
Oct-06	0.0m3	327.4m3 19-Oct-06
Nov-06	48.0m3 3-Nov-06	307.8m3 9-Nov-06
Dec-06	0.0m3 3-Nov-06	188.4m3 21-Dec-06
<b>Maximum Day:</b>	<b>48.0m3 3-Nov-06</b>	<b>875.8m3 25-Jun-06</b>
<b>Daily Cap:</b>	<b>27.0m3</b>	<b>1,295.0m3</b>
<b>Design Rate:</b>		15.0L/s

**Minimum Daily Well Pumpage**

Month	Well #1 Min Day	Well #2 Min Day
Jan-06	0.0m3 1-Jan-06	0.0m3 26-Jan-06
Feb-06	0.0m3 4-Feb-06	0.0m3 14-Feb-06
Mar-06	0.0m3 13-Mar-06	0.0m3 14-Mar-06
Apr-06	0.0m3 2-Apr-06	0.0m3 2-Apr-06
May-06	0.0m3 1-May-06	0.0m3 6-May-06
Jun-06	0.0m3 3-Jun-06	0.0m3 3-Jun-06
Jul-06	0.0m3 1-Jul-06	0.0m3 3-Jul-06
Aug-06	0.0m3 1-Aug-06	0.0m3 3-Aug-06
Sep-06	0.0m3 1-Sep-06	0.0m3 3-Sep-06
Oct-06	0.0m3 1-Oct-06	0.0m3 1-Oct-06
Nov-06	0.0m3 1-Nov-06	0.0m3 5-Nov-06
Dec-06	0.0m3 1-Dec-06	0.0m3 2-Dec-06

**Inglewood WPS. #1  
2006**

Average Daily Well Pumpage

Month	Well #1 Avg Day	Well #2 Avg Day
Jan-06	0.0m3	60.0m3
Feb-06	0.0m3	86.0m3
Mar-06	0.0m3	134.9m3
Apr-06	0.0m3	132.7m3
May-06	0.0m3	70.7m3
Jun-06	0.0m3	214.8m3
Jul-06	0.0m3	197.6m3
Aug-06	0.0m3	181.1m3
Sep-06	0.0m3	110.3m3
Oct-06	0.0m3	59.1m3
Nov-06	2.4m3	46.6m3
Dec-06	0.0m3	41.0m3

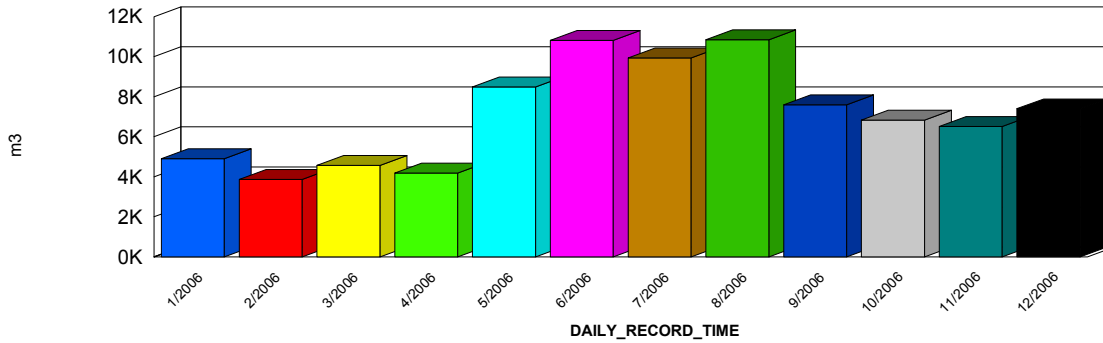
Maximum Avg:

**2.40m3** Nov-06

**214.79m3** Jun-06

**Inglewood WPS. #2**  
**2006**

**Well Production Over 12 Months**



Month	Well #3	TOTAL
<b>Jan-06</b>	4,909.6m3	4,909.6m3
<b>Feb-06</b>	3,870.8m3	3,870.8m3
<b>Mar-06</b>	4,573.4m3	4,573.4m3
<b>Apr-06</b>	4,196.3m3	4,196.3m3
<b>May-06</b>	8,485.6m3	8,485.6m3
<b>Jun-06</b>	10,812.4m3	10,812.4m3
<b>Jul-06</b>	9,934.1m3	9,934.1m3
<b>Aug-06</b>	10,842.1m3	10,842.1m3
<b>Sep-06</b>	7,602.3m3	7,602.3m3
<b>Oct-06</b>	6,827.6m3	6,827.6m3
<b>Nov-06</b>	6,519.1m3	6,519.1m3
<b>Dec-06</b>	7,400.3m3	7,400.3m3
<b>YEAR TOTAL:</b>	<b>85,973.4m3</b>	<b>85,973.4m3</b>
<b>Maximum Month:</b>	<b>10,842.1m3</b> <i>Aug-06</i>	<b>10,842.1m3</b> <i>Aug-06</i>
<b>Minimum Month:</b>	<b>3,870.8m3</b> <i>Feb-06</i>	<b>3,870.8m3</b> <i>Feb-06</i>
<b>Average Month:</b>	<b>7,164.5m3</b>	<b>7,164.5m3</b>

**Inglewood WPS. #2**  
**2006**

Maximum Daily Well Pumpage

Month	Well #3 Max Day
Jan-06	364.6m3 8-Jan-06
Feb-06	352.9m3 5-Feb-06
Mar-06	367.7m3 6-Mar-06
Apr-06	441.4m3 8-Apr-06
May-06	536.8m3 30-May-06
Jun-06	830.5m3 19-Jun-06
Jul-06	867.7m3 9-Jul-06
Aug-06	724.9m3 13-Aug-06
Sep-06	444.1m3 10-Sep-06
Oct-06	414.0m3 30-Oct-06
Nov-06	369.1m3 25-Nov-06
Dec-06	427.8m3 4-Dec-06

**Maximum Day:** 867.7m3 9-Jul-06

**Daily Cap:** 1,295.0m3

**Design Rate:** 15.0L/s

Minimum Daily Well Pumpage

Month	Well #3 Min Day
Jan-06	0.0m3 12-Jan-06
Feb-06	0.0m3 12-Feb-06
Mar-06	0.0m3 18-Mar-06
Apr-06	0.0m3 13-Apr-06
May-06	0.0m3 14-May-06
Jun-06	0.0m3 25-Jun-06
Jul-06	0.0m3 22-Jul-06
Aug-06	0.0m3 16-Aug-06
Sep-06	0.0m3 21-Sep-06
Oct-06	0.0m3 31-Oct-06
Nov-06	0.0m3 9-Nov-06
Dec-06	0.0m3 22-Dec-06

**Inglewood WPS. #2**  
**2006**

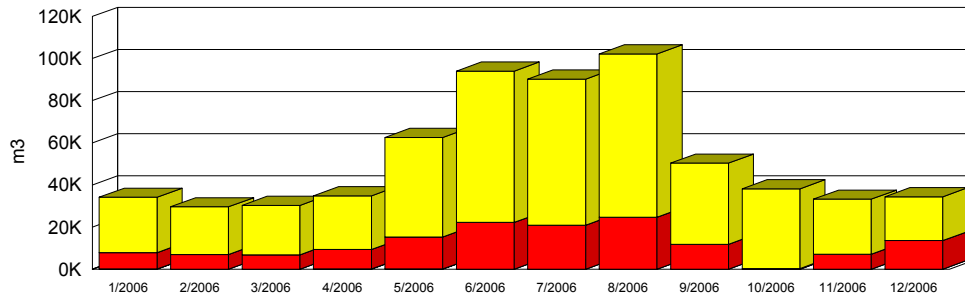
Average Daily Well Pumpage

Month	Well #3 Avg Day
Jan-06	158.4m3
Feb-06	138.2m3
Mar-06	147.5m3
Apr-06	139.9m3
May-06	273.7m3
Jun-06	360.4m3
Jul-06	320.5m3
Aug-06	349.7m3
Sep-06	253.4m3
Oct-06	220.2m3
Nov-06	217.3m3
Dec-06	238.7m3

**Maximum Avg:**      **360.41m3** *Jun-06*

**Palgrave / Cedar Mills  
2006**

**TOTAL Well Production Over 12 Months**



**Wells 1, 2 & 3**

Month	TOTAL	Max Day	Min Day	Avg Day
Jan-06	34,119.9m3	1,829.1m3 22-Jan-06	443.1m3 6-Jan-06	1,100.6m3
Feb-06	29,566.4m3	1,795.5m3 18-Feb-06	455.7m3 8-Feb-06	1,055.9m3
Mar-06	30,246.0m3	1,342.5m3 14-Mar-06	645.1m3 15-Mar-06	975.7m3
Apr-06	34,863.3m3	1,915.1m3 25-Apr-06	671.2m3 5-Apr-06	1,162.1m3
May-06	62,543.2m3	3,248.1m3 28-May-06	1,278.4m3 19-May-06	2,017.5m3
Jun-06	93,978.5m3	4,707.7m3 25-Jun-06	1,776.2m3 3-Jun-06	3,132.6m3
Jul-06	90,249.4m3	4,284.4m3 9-Jul-06	1,083.1m3 18-Jul-06	2,911.3m3
Aug-06	102,177.8m3	4,599.5m3 13-Aug-06	1,757.0m3 26-Aug-06	3,296.1m3
Sep-06	50,322.8m3	3,089.9m3 1-Sep-06	827.9m3 29-Sep-06	1,677.4m3
Oct-06	38,151.8m3	1,851.4m3 10-Oct-06	705.6m3 20-Oct-06	1,230.7m3
Nov-06	33,217.2m3	2,538.2m3 13-Nov-06	438.2m3 24-Nov-06	1,107.2m3
Dec-06	34,361.6m3	1,546.2m3 29-Dec-06	685.5m3 1-Dec-06	1,108.4m3

**YEAR TOTAL:** 633,797.9m3  
**Per Capita:** 177.14m3

**Yearly Avg:** 1,736.43m3/d  
**Per Capita:** 0.49m3/d

**Maximum Month:** 102,177.8m3 Aug-06  
**Per Capita:** 28.56m3

**Minimum Month:** 29,566.4m3 Feb-06

**Average Month:** 52,816.5m3

**Maximum Day:** 4,707.7m3 25-Jun-06  
**Per Capita:** 1.32m3

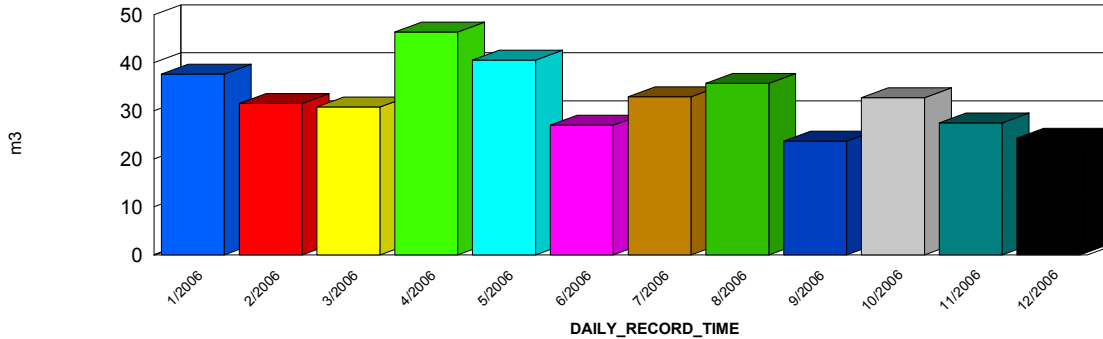
**Maximum 3 Consecutive Days:**  
4,414.4m3 24-Jun-06  
4,707.7m3 25-Jun-06  
4,480.0m3 26-Jun-06

**Running 3 Day Total:** 13,602.1m3  
**Per Capita:** 3.80m3

Equivalent Served Population 3578

**Palgrave WPS. #1  
2006**

**Well Production Over 12 Months**



Month	Well #1	TOTAL
<b>Jan-06</b>	37.6m3	37.6m3
<b>Feb-06</b>	31.5m3	31.5m3
<b>Mar-06</b>	30.8m3	30.8m3
<b>Apr-06</b>	46.4m3	46.4m3
<b>May-06</b>	40.6m3	40.6m3
<b>Jun-06</b>	27.0m3	27.0m3
<b>Jul-06</b>	32.9m3	32.9m3
<b>Aug-06</b>	35.7m3	35.7m3
<b>Sep-06</b>	23.7m3	23.7m3
<b>Oct-06</b>	32.8m3	32.8m3
<b>Nov-06</b>	27.5m3	27.5m3
<b>Dec-06</b>	24.3m3	24.3m3
<b>YEAR TOTAL:</b>	<b>390.8m3</b>	<b>390.8m3</b>
<b>Maximum Month:</b>	<b>46.4m3</b> <i>Apr-06</i>	<b>46.4m3</b> <i>Apr-06</i>
<b>Minimum Month:</b>	<b>23.7m3</b> <i>Sep-06</i>	<b>23.7m3</b> <i>Sep-06</i>
<b>Average Month:</b>	<b>32.6m3</b>	<b>32.6m3</b>

**Palgrave WPS. #1  
2006**

Maximum Daily Well Pumpage

Month	Well #1 Max Day
Jan-06	7.7m3 24-Jan-06
Feb-06	7.8m3 9-Feb-06
Mar-06	7.8m3 16-Mar-06
Apr-06	10.5m3 3-Apr-06
May-06	9.7m3 2-May-06
Jun-06	7.7m3 8-Jun-06
Jul-06	9.9m3 17-Jul-06
Aug-06	8.9m3 2-Aug-06
Sep-06	6.8m3 11-Sep-06
Oct-06	8.8m3 31-Oct-06
Nov-06	9.9m3 27-Nov-06
Dec-06	7.4m3 27-Dec-06

**Maximum Day:** 10.5m3 3-Apr-06

**Daily Cap:** 1,309.0m3

**Design Rate:** 15.1L/s

Minimum Daily Well Pumpage

Month	Well #1 Min Day
Jan-06	0.0m3 3-Jan-06
Feb-06	0.0m3 1-Feb-06
Mar-06	0.0m3 1-Mar-06
Apr-06	0.0m3 2-Apr-06
May-06	0.0m3 3-May-06
Jun-06	0.0m3 1-Jun-06
Jul-06	0.0m3 13-Jul-06
Aug-06	0.0m3 1-Aug-06
Sep-06	0.0m3 1-Sep-06
Oct-06	0.0m3 1-Oct-06
Nov-06	0.0m3 1-Nov-06
Dec-06	0.0m3 1-Dec-06

**Palgrave WPS. #1**  
**2006**

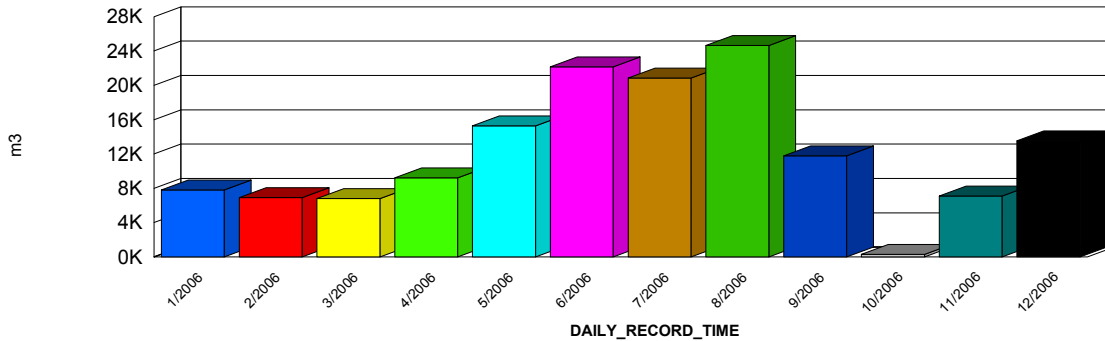
Average Daily Well Pumpage

Month	Well #1 Avg Day
Jan-06	1.2m3
Feb-06	1.1m3
Mar-06	1.0m3
Apr-06	1.5m3
May-06	1.3m3
Jun-06	0.9m3
Jul-06	1.1m3
Aug-06	1.2m3
Sep-06	0.8m3
Oct-06	1.1m3
Nov-06	0.9m3
Dec-06	0.8m3

**Maximum Avg:**            **1.55m3** *Apr-06*

**Palgrave WPS. #2**  
**2006**

**Well Production Over 12 Months**



Month	Well #2	TOTAL
<b>Jan-06</b>	7,809.0m3	7,809.0m3
<b>Feb-06</b>	6,924.3m3	6,924.3m3
<b>Mar-06</b>	6,817.9m3	6,817.9m3
<b>Apr-06</b>	9,234.8m3	9,234.8m3
<b>May-06</b>	15,279.3m3	15,279.3m3
<b>Jun-06</b>	22,157.3m3	22,157.3m3
<b>Jul-06</b>	20,867.4m3	20,867.4m3
<b>Aug-06</b>	24,658.9m3	24,658.9m3
<b>Sep-06</b>	11,799.4m3	11,799.4m3
<b>Oct-06</b>	296.5m3	296.5m3
<b>Nov-06</b>	7,089.4m3	7,089.4m3
<b>Dec-06</b>	13,529.1m3	13,529.1m3
<b>YEAR TOTAL:</b>	<b>146,463.3m3</b>	<b>146,463.3m3</b>
<b>Maximum Month:</b>	<b>24,658.9m3</b> <i>Aug-06</i>	<b>24,658.9m3</b> <i>Aug-06</i>
<b>Minimum Month:</b>	<b>296.5m3</b> <i>Oct-06</i>	<b>296.5m3</b> <i>Oct-06</i>
<b>Average Month:</b>	<b>12,205.3m3</b>	<b>12,205.3m3</b>

**Palgrave WPS. #2**  
**2006**

Maximum Daily Well Pumpage

Month	Well #2 Max Day
Jan-06	547.3m3 17-Jan-06
Feb-06	771.2m3 5-Feb-06
Mar-06	274.3m3 24-Mar-06
Apr-06	1,051.6m3 26-Apr-06
May-06	1,003.2m3 24-May-06
Jun-06	1,248.3m3 26-Jun-06
Jul-06	1,299.6m3 9-Jul-06
Aug-06	1,440.0m3 9-Aug-06
Sep-06	956.1m3 9-Sep-06
Oct-06	111.2m3 10-Oct-06
Nov-06	597.9m3 15-Nov-06
Dec-06	1,546.2m3 29-Dec-06
<b>Maximum Day:</b>	<b>1,546.2m3 29-Dec-06</b>
<b>Daily Cap:</b>	<b>2,618.0m3</b>
<b>Design Rate:</b>	<b>30.3L/s</b>

Minimum Daily Well Pumpage

Month	Well #2 Min Day
Jan-06	44.7m3 13-Jan-06
Feb-06	78.7m3 22-Feb-06
Mar-06	148.7m3 15-Mar-06
Apr-06	110.7m3 24-Apr-06
May-06	184.5m3 11-May-06
Jun-06	410.0m3 3-Jun-06
Jul-06	0.0m3 18-Jul-06
Aug-06	288.1m3 31-Aug-06
Sep-06	0.0m3 16-Sep-06
Oct-06	0.0m3 12-Oct-06
Nov-06	0.0m3 26-Nov-06
Dec-06	41.0m3 26-Dec-06

**Palgrave WPS. #2**  
**2006**

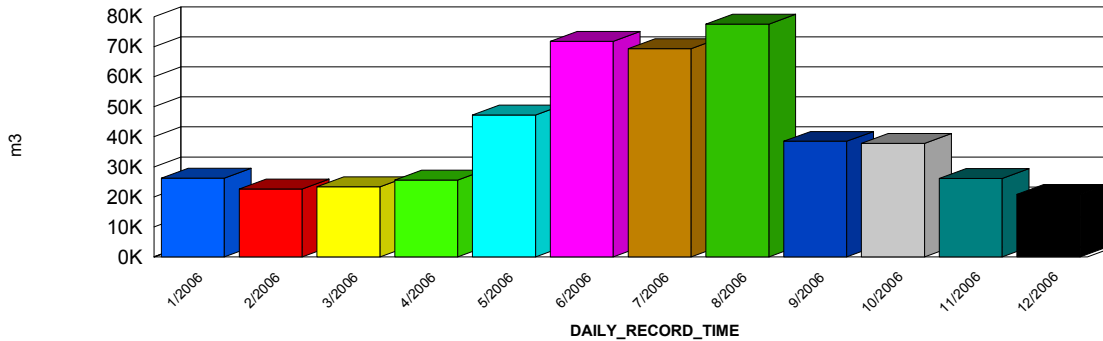
Average Daily Well Pumpage

Month	Well #2 Avg Day
Jan-06	251.9m3
Feb-06	247.3m3
Mar-06	219.9m3
Apr-06	307.8m3
May-06	492.9m3
Jun-06	738.6m3
Jul-06	673.1m3
Aug-06	795.4m3
Sep-06	393.3m3
Oct-06	9.6m3
Nov-06	236.3m3
Dec-06	436.4m3

**Maximum Avg: 795.45m3 Aug-06**

**Palgrave WPS. #3  
2006**

**Well Production Over 12 Months**



Month	Well #3	TOTAL
<b>Jan-06</b>	26,273.3m3	26,273.3m3
<b>Feb-06</b>	22,610.5m3	22,610.5m3
<b>Mar-06</b>	23,397.2m3	23,397.2m3
<b>Apr-06</b>	25,582.1m3	25,582.1m3
<b>May-06</b>	47,223.3m3	47,223.3m3
<b>Jun-06</b>	71,794.2m3	71,794.2m3
<b>Jul-06</b>	69,349.1m3	69,349.1m3
<b>Aug-06</b>	77,483.1m3	77,483.1m3
<b>Sep-06</b>	38,499.7m3	38,499.7m3
<b>Oct-06</b>	37,822.6m3	37,822.6m3
<b>Nov-06</b>	26,100.4m3	26,100.4m3
<b>Dec-06</b>	20,808.2m3	20,808.2m3
<b>YEAR TOTAL:</b>	<b>486,943.8m3</b>	<b>486,943.8m3</b>
<b>Maximum Month:</b>	<b>77,483.1m3</b> <i>Aug-06</i>	<b>77,483.1m3</b> <i>Aug-06</i>
<b>Minimum Month:</b>	<b>20,808.2m3</b> <i>Dec-06</i>	<b>20,808.2m3</b> <i>Dec-06</i>
<b>Average Month:</b>	<b>40,578.7m3</b>	<b>40,578.7m3</b>

**Palgrave WPS. #3  
2006**

**Maximum Daily Well Pumpage**

Month	Well #3 Max Day
Jan-06	1,405.8m3 22-Jan-06
Feb-06	1,381.9m3 18-Feb-06
Mar-06	1,138.2m3 14-Mar-06
Apr-06	1,725.8m3 25-Apr-06
May-06	2,466.2m3 28-May-06
Jun-06	3,613.5m3 25-Jun-06
Jul-06	3,119.3m3 6-Jul-06
Aug-06	3,486.5m3 21-Aug-06
Sep-06	2,364.4m3 1-Sep-06
Oct-06	1,736.4m3 10-Oct-06
Nov-06	2,187.4m3 13-Nov-06
Dec-06	1,171.7m3 10-Dec-06
<b>Maximum Day:</b>	<b>3,613.5m3 25-Jun-06</b>
<b>Daily Cap:</b>	<b>5,892.0m3</b>
<b>Design Rate:</b>	<b>68.2L/s</b>

**Minimum Daily Well Pumpage**

Month	Well #3 Min Day
Jan-06	342.4m3 6-Jan-06
Feb-06	310.7m3 5-Feb-06
Mar-06	496.4m3 15-Mar-06
Apr-06	58.3m3 26-Apr-06
May-06	862.5m3 24-May-06
Jun-06	1,366.3m3 3-Jun-06
Jul-06	1,083.1m3 18-Jul-06
Aug-06	1,336.4m3 26-Aug-06
Sep-06	602.3m3 9-Sep-06
Oct-06	705.6m3 20-Oct-06
Nov-06	338.1m3 24-Nov-06
Dec-06	0.0m3 28-Dec-06

**Palgrave WPS. #3**  
**2006**

Average Daily Well Pumpage

Month	Well #3 Avg Day
Jan-06	847.5m3
Feb-06	807.5m3
Mar-06	754.7m3
Apr-06	852.7m3
May-06	1,523.3m3
Jun-06	2,393.1m3
Jul-06	2,237.1m3
Aug-06	2,499.5m3
Sep-06	1,283.3m3
Oct-06	1,220.1m3
Nov-06	870.0m3
Dec-06	671.2m3

**Maximum Avg:** **2,499.46m3** *Aug-06*