

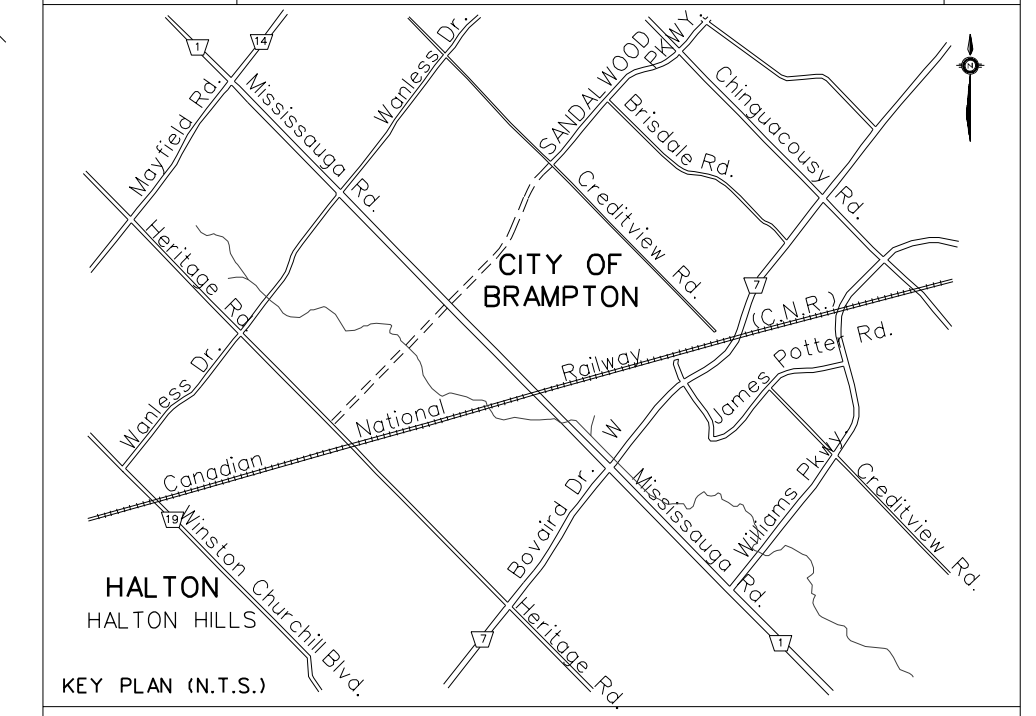


MATCH LINE - STA 1+280
SEE DRAWING PP05

- NOTE:**
- SUBJECT TO DETAIL DESIGN OR CONSTRUCTION OF MISSISSAUGA ROAD FOR BOVAIRD DRIVE, THE EAST CURB LINE ESTABLISHED WILL BE THE REFERENCE STARTING POINT FOR THE FUTURE WIDENING OF MISSISSAUGA ROAD TO SIX (6) LANES.
 - THE LOCATION OF SIDEWALKS AND MULTI-USE PATHS WILL BE CONFIRMED DURING DETAIL DESIGN.

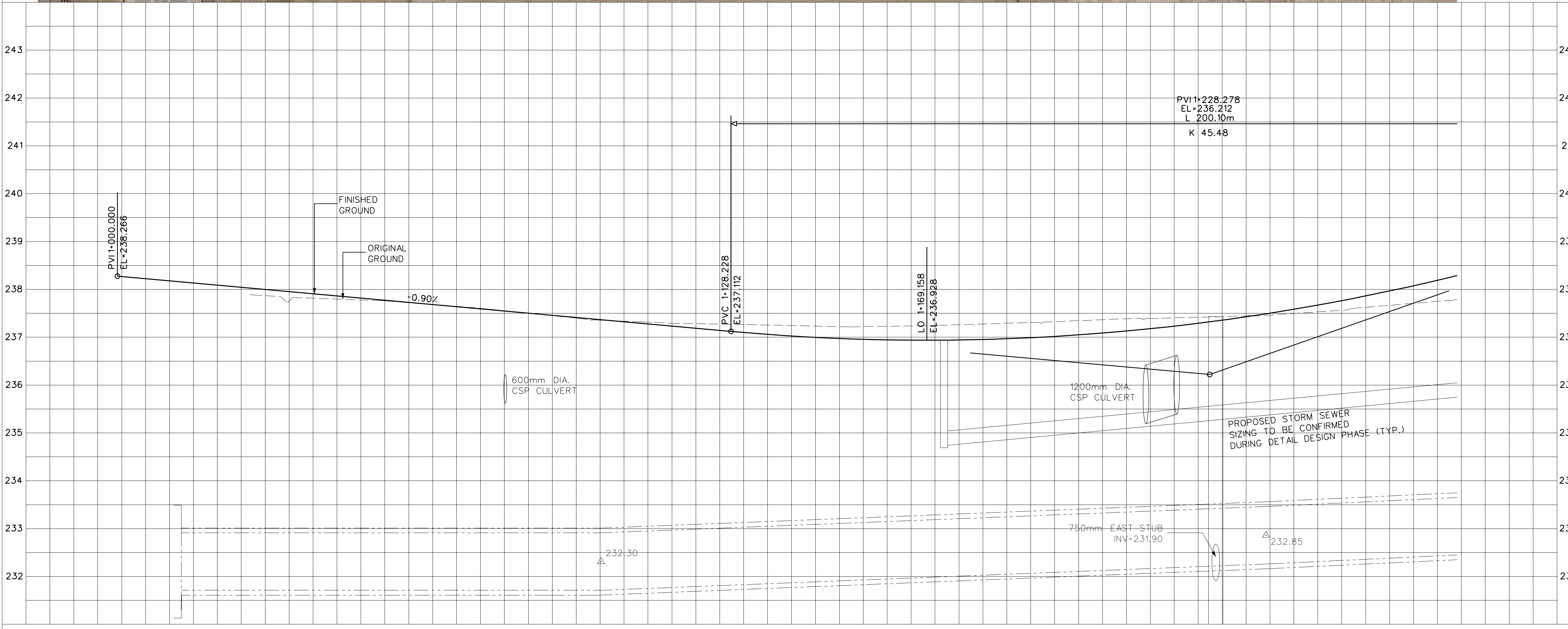
SERVICE DATA					
SERVICE	DATE	INIT.	SERVICE	DATE	INIT.
SAN SEWERS			GAS MAINS		
STORM SEWERS			BELL U/G CABLE		
WATERMANS			HYDRO U/G CABLE		
TRANSIT			ONT. HYDRO		
PARKS & REC.			CTV		
ONT. CLEAN WATER					

REVISIONS		
DATE	DETAILS	INIT.



AECOM

AECOM CANADA LTD.
300 TOWN CENTRE BLVD., MARKHAM,
ONTARIO, CANADA L3R 5Z6
T905.477.8700 F905.477.1456



General Notes

- All Driveways ASPHALT Unless Otherwise Noted.
- All Service Locations Are Approximate And Must Be Located Accurately In The Field
- Denotes Building - Not Located
- Denotes Building Located
- Type 'B' Bedding Unless Otherwise Noted (SAN)

B.M. No. Elev.

The Contractor is Responsible For Locating And Protecting All Existing Utilities Prior To And During Construction Location of Existing Utilities Approximate Only, To Be Verified In Field By Contractor.

Designed by _____ Chkd. _____

Approved by _____

NOTICE TO CONTRACTOR

48 HOURS PRIOR TO COMMENCING WORK NOTIFY THE FOLLOWING

THE REGIONAL MUNICIPALITY OF PEEL
CITY OF MISSISSAUGA WORKS DEPT.
CITY OF BRAMPTON WORKS DEPT.
TOWN OF CALEDON WORKS DEPT.
BELL TELEPHONE COMPANY
CONSUMERS GAS COMPANY
MINISTRY OF TRANSPORTATION
ONTARIO CLEAN WATER AGENCY
HYDRO ELECTRIC POWER COMM. OF ONTARIO
HYDRO ELECTRIC COMM. CITY OF MISSISSAUGA
HYDRO ELECTRIC COMM. CITY OF BRAMPTON
CABLE TELEVISION



Region of Peel
Working for you

MISSISSAUGA ROAD
(FROM BOVAIRD DR. TO MAYFIELD RD.)
PLAN AND PROFILE

Sta. 1+000.00	To Sta. 1+280.00	PR. ROAD ELEV.	Lots	Area	Project No.										
238.266	238.086	237.906	237.726	237.546	237.366	237.186	237.021	236.937	236.941	237.032	237.212	237.480	237.835	238.279	105163
238.27	238.09	237.91	237.73	237.55	237.37	237.20	237.13	237.15	237.28	237.51	237.83	238.26	238.78	239.41	EX. ROAD ELEV.
1+000	1+020	1+040	1+060	1+080	1+100	1+120	1+140	1+160	1+180	1+200	1+220	1+240	1+260	1+280	ROAD CHAINAGE
Date NOV 2012														Sheet 1 of 19	Plan No. PP01