

# Bolton Water and Wastewater Capacity Improvements

## Schedule 'C' Class EA

### Public Information Centre (PIC) No. 1

Albion Bolton Community Centre – Auditorium  
150 Queen Street South, Bolton ON, L7E 1E3

Date: Thursday, November 16, 2023

Time: 5 – 7 p.m.

## Key Dates

### November 16, 2023



PIC No. 1 materials posted to project website (access via link or scan the QR code with a smart-phone):

<https://www.peelregion.ca/public-works/environmental-assessments/caledon/bolton.asp>

### November 16 to November 30, 2023

If you have any questions or wish to provide your input, please speak with one of the project team members, and/or contact the Region of Peel Project Manager at

[Italia.Ponce@peelregion.ca](mailto:Italia.Ponce@peelregion.ca)

### December 11, 2023

Responses to questions and comments related to PIC No. 1 posted to project website.

## Public Information Centre (PIC) Objectives



**Present the study area and objectives.**



**Present the environmental assessment process.**



**Present environmental and technical background relevant to the development of servicing alternatives.**



**Receive feedback on the study process and servicing opportunities and constraints.**

*This is the first of three PIC for this study.*

## Stay Engaged!

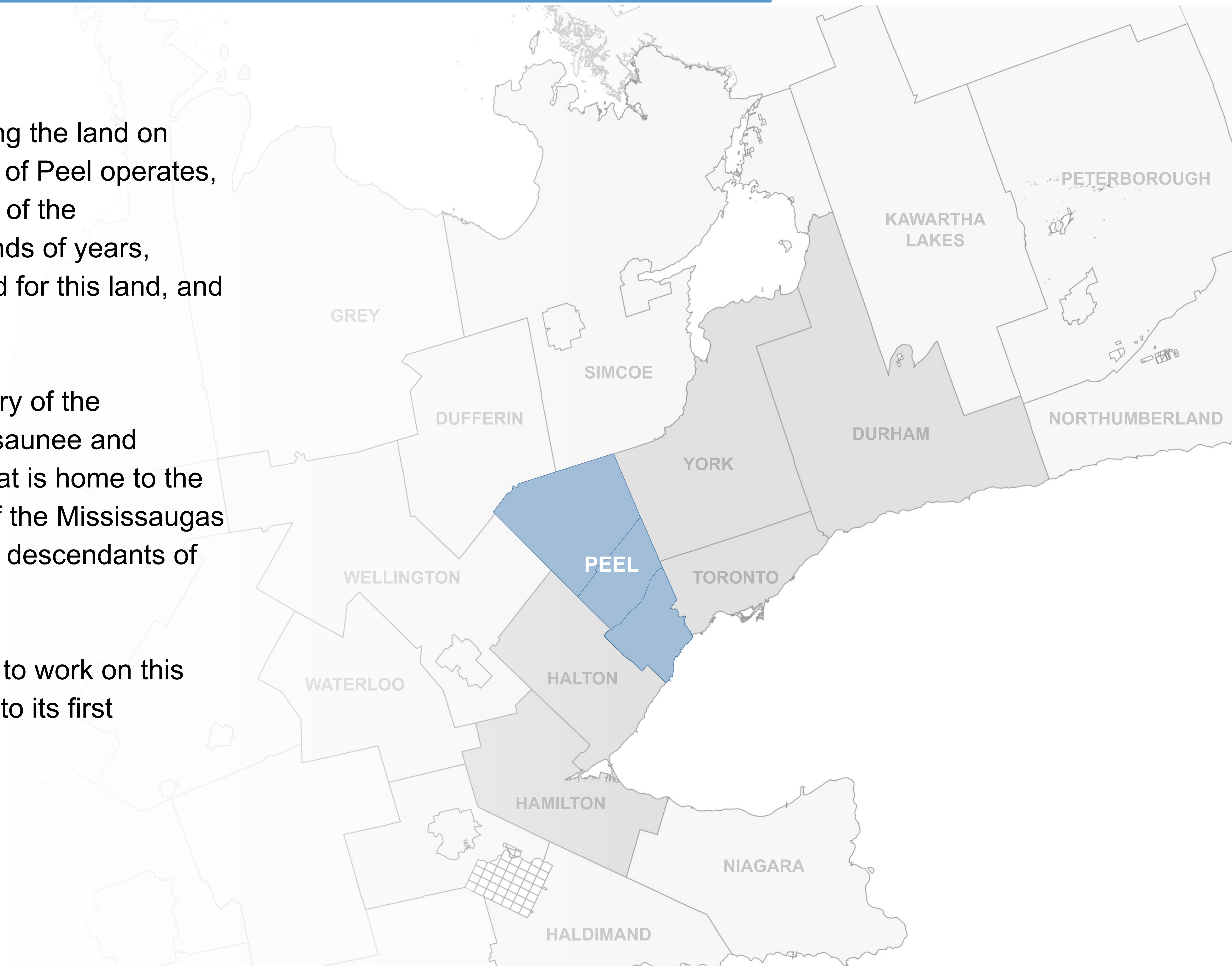
- ✓ Please sign in and take a comment sheet.
- ✓ Have a look at the project information on display and chat with the Project Team.
- ✓ Provide your feedback regarding the information presented.



We would like to begin by acknowledging the land on which we gather, and which the Region of Peel operates, is part of the Treaty Lands and Territory of the Mississaugas of the Credit. For thousands of years, Indigenous peoples inhabited and cared for this land, and continue to do so today.

In particular we acknowledge the territory of the Anishinabek, Huron-Wendat, Haudenosaunee and Ojibway/Chippewa peoples; the land that is home to the Metis; and most recently, the territory of the Mississaugas of the Credit First Nation who are direct descendants of the Mississaugas of the Credit.

We are grateful to have the opportunity to work on this land, and by doing so, give our respect to its first inhabitants.





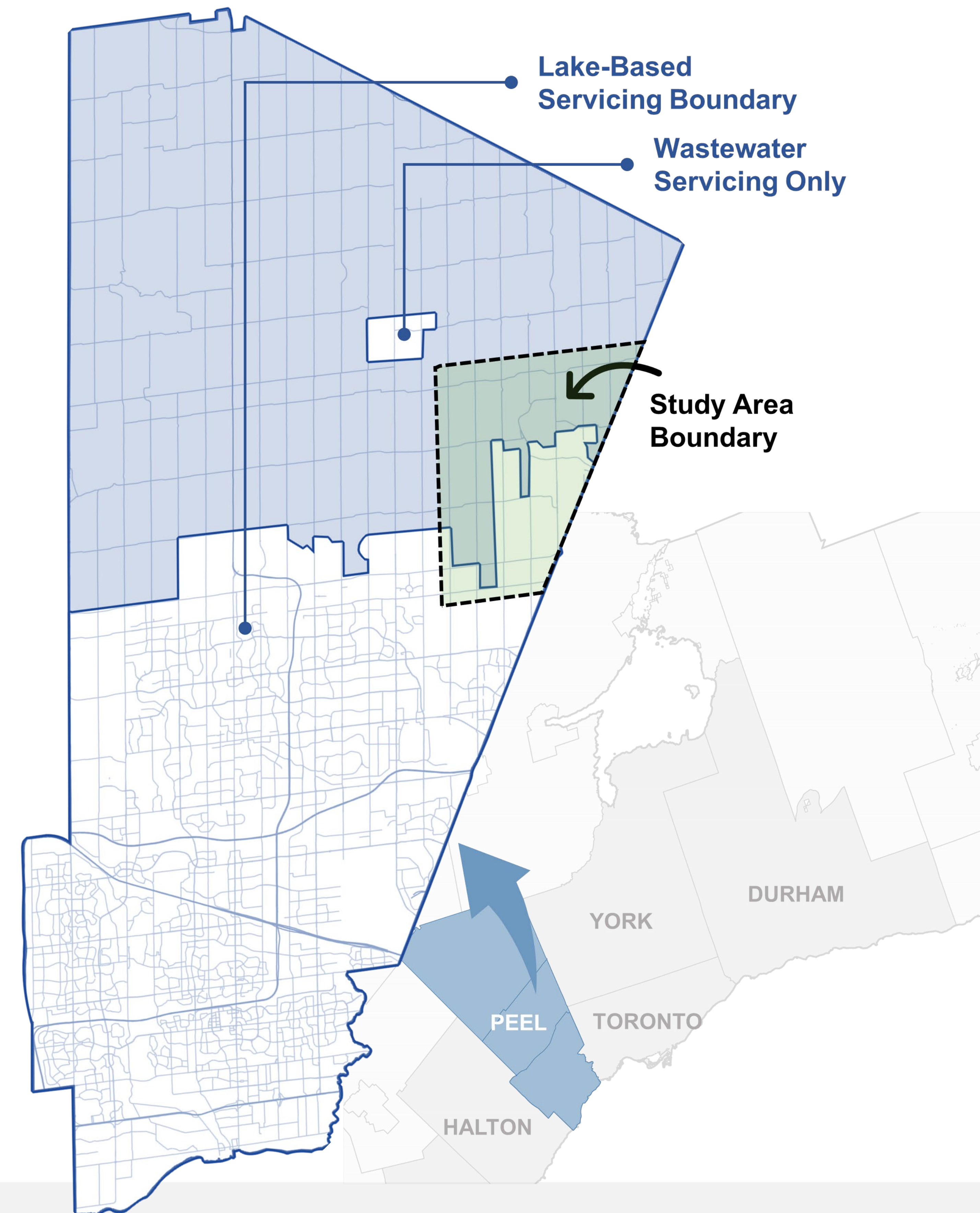
# What is this study about?

## Background and Study Purpose

The Region of Peel completed a **Water and Wastewater Master Servicing Plan Update (2020)** which identified the need to construct new water and wastewater linear distribution and collection pipes and pumping facilities to service future planned population growth in the community of Bolton.

The **Bolton Water and Wastewater Capacity Improvements Schedule 'C' Class Environmental Assessment (EA)** builds off a Feasibility Study recently completed by the Region that outlined conceptual projects to service additional development proposed within both the intensification and greenfield growth areas in the community of Bolton. This study will develop, evaluate, and identify the optimal water and wastewater servicing solutions through the Class EA process to meet existing needs and growth.

1. Fulfil the Class Environment Assessment process.
2. Extend water and wastewater infrastructure to service future growth.
3. Ensure the best use of the existing water and wastewater infrastructure.
4. Develop, evaluate and select a preferred linear (piped) and pumped infrastructure solution.





# Municipal Class Environmental Assessment Process

| PHASE 1  | PHASE 2  | PHASE 3  | PHASE 4   | PHASE 5  |
|--|--|--|---|--|
| Problem or Opportunity   | Alternative Solutions  | Alternative Design Concepts for Preferred Solution   | Environmental Study Report (ESR)  | Implementation                                       |
| Identify Problem or Opportunity                                    | Identify Alternative Solutions to Problem or Opportunity                                       | Identify Alternative Solutions to Problem or Opportunity                                       | Complete Environmental Study Report (ESR)   | Complete Contract Drawings and Tender Documents      |
| Discretionary Public Consultation to Review Problem or Opportunity | Inventory Natural, Social, Economic Environment  | Detail Inventory Natural, Social, Economic Environment   | Notice of Completion to Review Agencies and Public                                      | Proceed to Construction and Operation                |
|  | <b>Engagement. RE: Problem or Opportunity and Conceptual Solutions. (PIC 1)</b>                | Identify Impact of Alternative Designs on Environment, and Mitigating Measures                 | Copy of Notice of Completion to Ministry of Environment Environmental Assessment Branch | Monitor for Environmental Provisions and Commitments |
|  | Identify Impact of Alternative Solutions on the Environment, and Mitigating Measures           | Evaluate Alternative Designs: Identify Recommended Solutions                                   | Environmental Study Report Placed on Public Record                                      |  |
|  | Evaluate Alternative Solutions: Identify Recommended Solutions                                 | <b>Consult Review Agencies and Previously Interested and Directly Affected Public. (PIC 3)</b> | Opportunity to Request Minister Within 30 Days of Notification to Request and Order     |  |
|  | <b>Consult Review Agencies and Previously Interested and Directly Affected Public. (PIC 2)</b> | Select Preferred Design  |   |  |
|  | Select Preferred Solution  | Preliminary Finalization of Preferred Design   |   |  |

**We are here!**

The **Bolton Water and Wastewater Capacity Improvements Study** is being undertaken as a Schedule 'C' Class Environmental Assessment (EA), satisfying Phases 1 to 4 of the Municipal Class Environmental Assessment (MCEA) process (October 2000, as amended in 2007, 2011, 2015, and 2023).

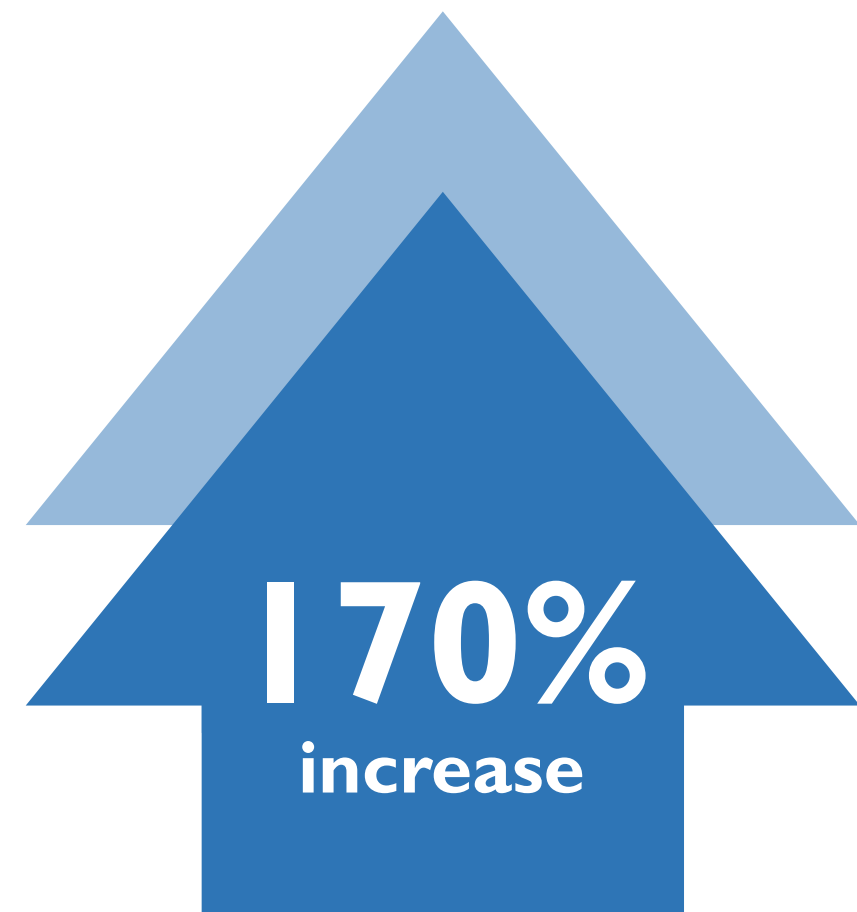
This study will hold three Public Information Centres (PICs) which are consultation and engagement milestones highlighted in yellow and blue.



# Why is this study being conducted? Problem and Opportunity Statement



**A Place to Grow** is the provincial framework for implementing growth in the Greater Golden Horseshoe (GGH) which the Region of Peel is situated within. The 2051 growth projections require extended water and wastewater services to the approved Regional Official Plan Amendment (ROPA) 30 areas in the Town of Bolton.



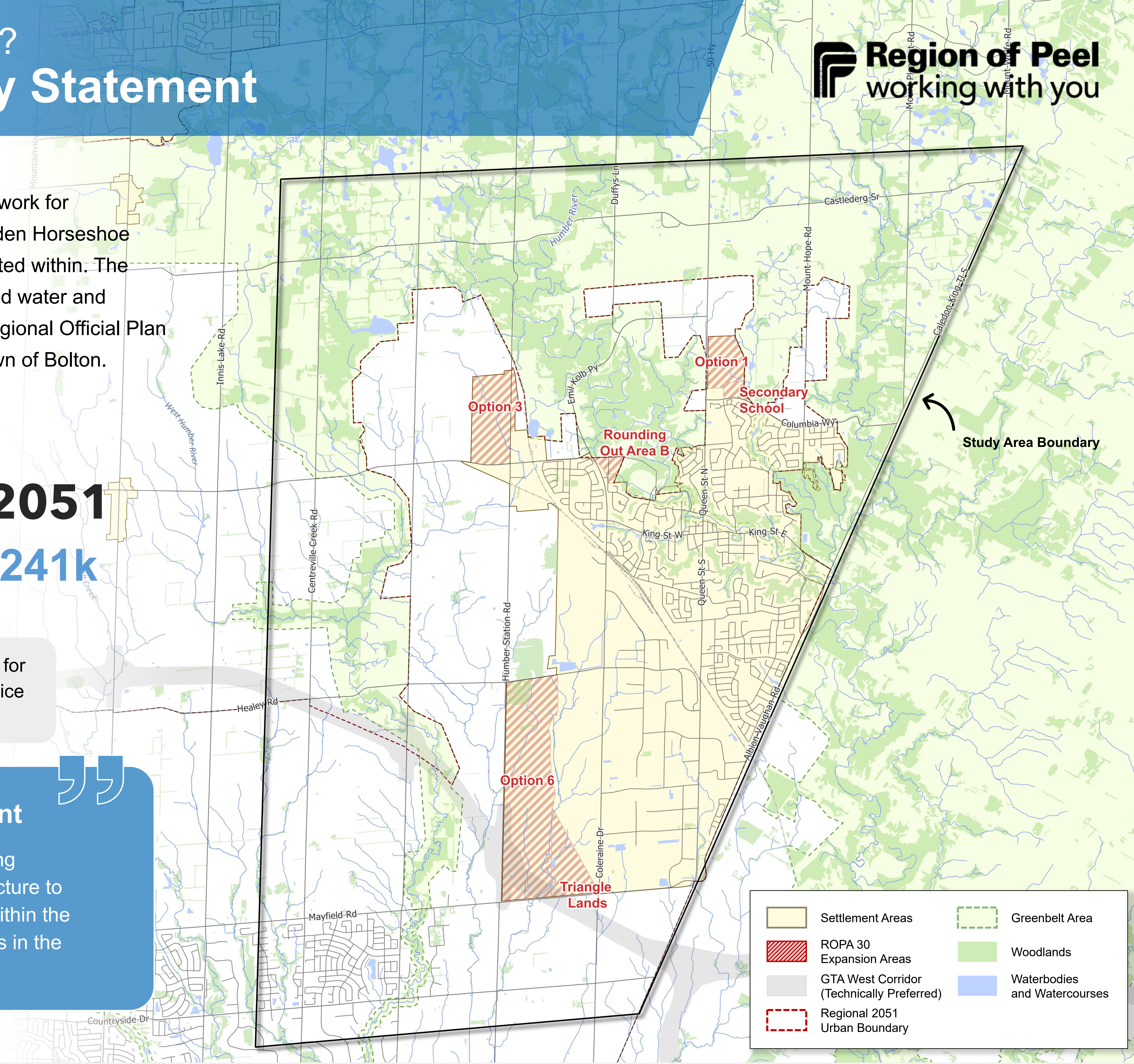
**2021**  
90k

**2051**  
241k

Population projections for the Bolton growth service area to 2051.

## Problem and Opportunity Statement

To develop optimal water and wastewater servicing solutions to improve linear and pumping infrastructure to meet both existing needs and approved growth within the Region Official Plan Amendment (ROPA) 30 lands in the Community of Bolton.



|  |   |  |                              |
|--|---|--|------------------------------|
|  | Settlement Areas                          |  | Greenbelt Area               |
|  | ROPA 30 Expansion Areas                   |  | Woodlands                    |
|  | GTA West Corridor (Technically Preferred) |  | Waterbodies and Watercourses |
|  | Regional 2051 Urban Boundary              |  |                              |



# Why is this study being completed? Project History and Timeline

**2018**

## **Bolton Residential Expansion Study (BRES)**

Town of Caledon led study that recommended water and wastewater servicing solutions to meet existing and future (2041) needs within Bolton.

**June 2020**

## **Water and Wastewater Master Plan for the Lake-Based System**

Region of Peel led study that recommended high level water and wastewater servicing solutions with the Region of Peel Lake-based systems, including Bolton, to support growth forecasts to 2041.

**October 2020**

## **Bolton Residential Expansion Study (BRES) ROPA 30**

Region of Peel led study that recommended water and wastewater servicing solutions for the expanded settlement boundary of the Bolton Rural Service Centre to support the Town's Regional Official Plan Amendment (ROPA) application.

**November 2020**

## **Approved Region of Peel Official Plan Amendment 30**

Amendment established an expansion to the Bolton Rural Service Centre. ROPA 30 approved the (245 hectares) to accommodate the short-term growth within the expansion area.

**February 2023**

## **Bolton Water and Wastewater Feasibility Study**

Reviewed the technical water and wastewater servicing needs for within the Amended ROPA 30 lands and consideration of long-term servicing needs. Identified the project components required to meet servicing needs.

**June 2023**

## **Bolton Water and Wastewater Capacity Improvement Class EA**

Reviewed the Feasibility Study projects component against the new MEA Guidance Determined Class Approach and kick started the Schedule 'C' Class EA Study.

**This EA will identify preferred infrastructure to service future growth.**



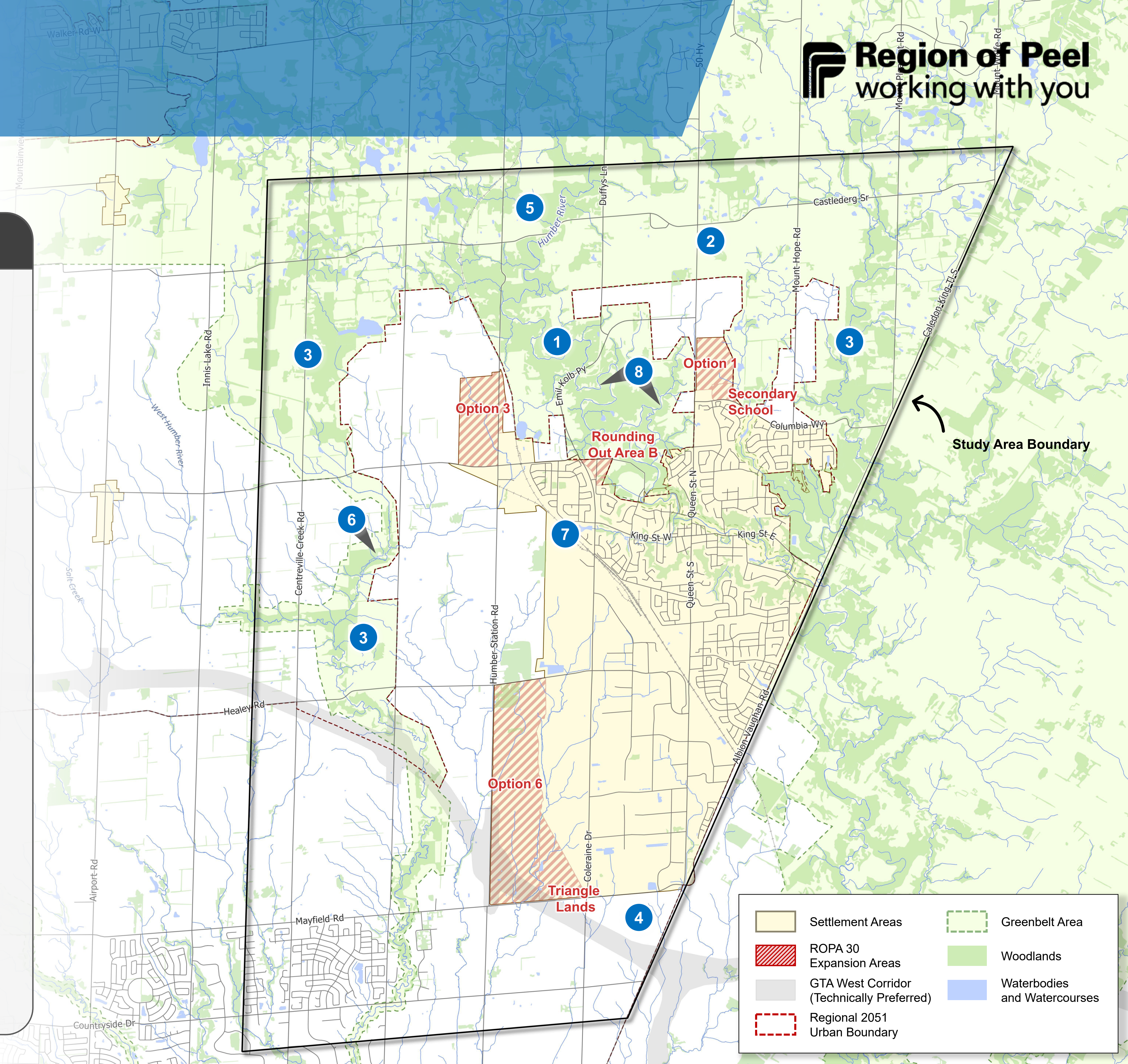
# What's in the study area? Baseline Understanding

## Study Area Baseline Understanding

The Study Area is located largely within the Town of Caledon and a portion of the City of Brampton. It is bounded by the following:

- Albion-Vaughan Road to the east,
- Countryside Drive to the south,
- Centreville Creek Road to the west, and,
- Castlederg Street to the north.

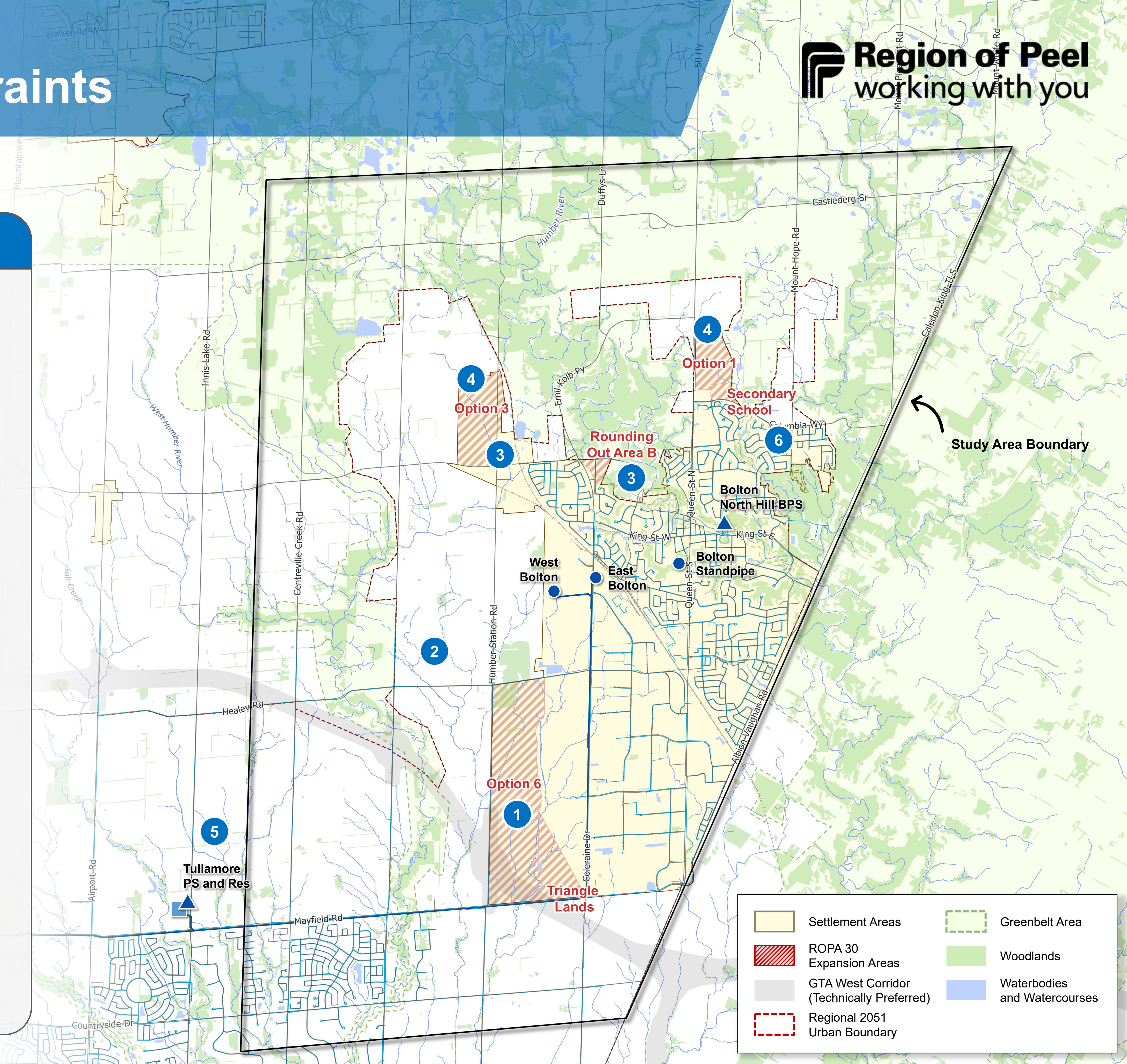
1. Highly vulnerable aquifers are present within the study area. No wellhead protection or intake protection zones within the study area.
2. Growth areas and settlement areas surrounded by the Oak Ridges Moraine Conservation Plan to the north.
3. Growth areas and settlement areas surrounded by the Greenbelt boundary.
4. Technically preferred GTA West Corridor.
5. Study area lies within the Humber River Watershed and is within the Toronto and Region Conservation Authority (TRCA) jurisdiction.
6. West Humber River.
7. Railway.
8. Humber River.





## Water System Servicing

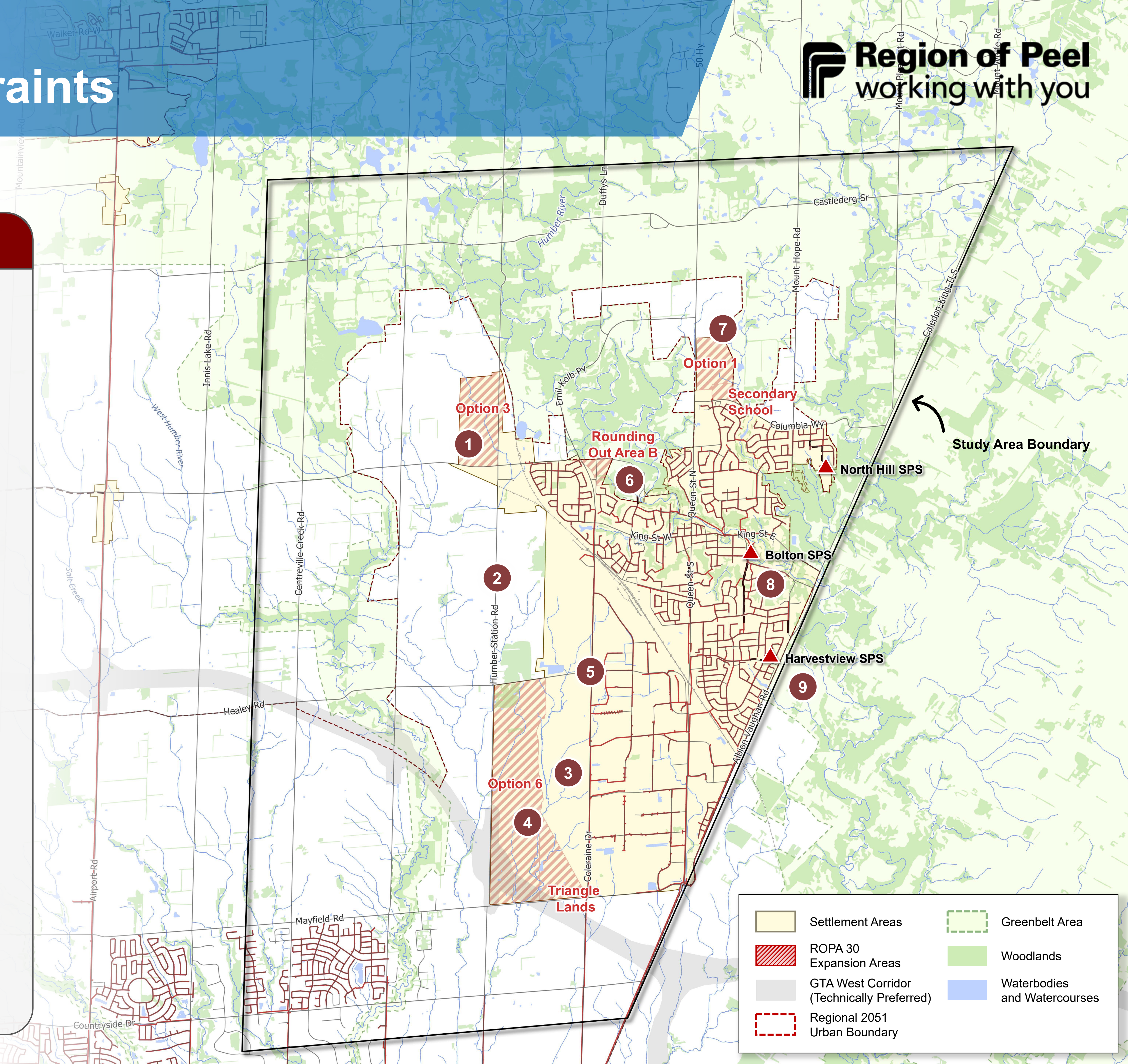
1. Future growth area. Water servicing partially covered through planned Master Plan projects. Most recent 2051 projections extend servicing needs well beyond ROPA 30 Areas.
2. Over the long-term, there may be operational challenges operating large Zone 6 area with minimal floating storage. Opportunity to investigate a dedicated Zone 6 East storage.
3. Opportunity for interim pumping station solution to support growth in Zone 7B prior to implementation of long-term solutions.
4. Extension of servicing required. Pumping required and potential storage needs, depending on extents of new service area, level of risk and operational considerations.
5. Potential need of Zone 5 East storage to help support growth in both Zone 6 and 7 and to be less dependent on Tullamore Pumping Station and Reservoir.
6. Low pressure in north areas of existing Pressure Zone 6.





## Wastewater System Servicing

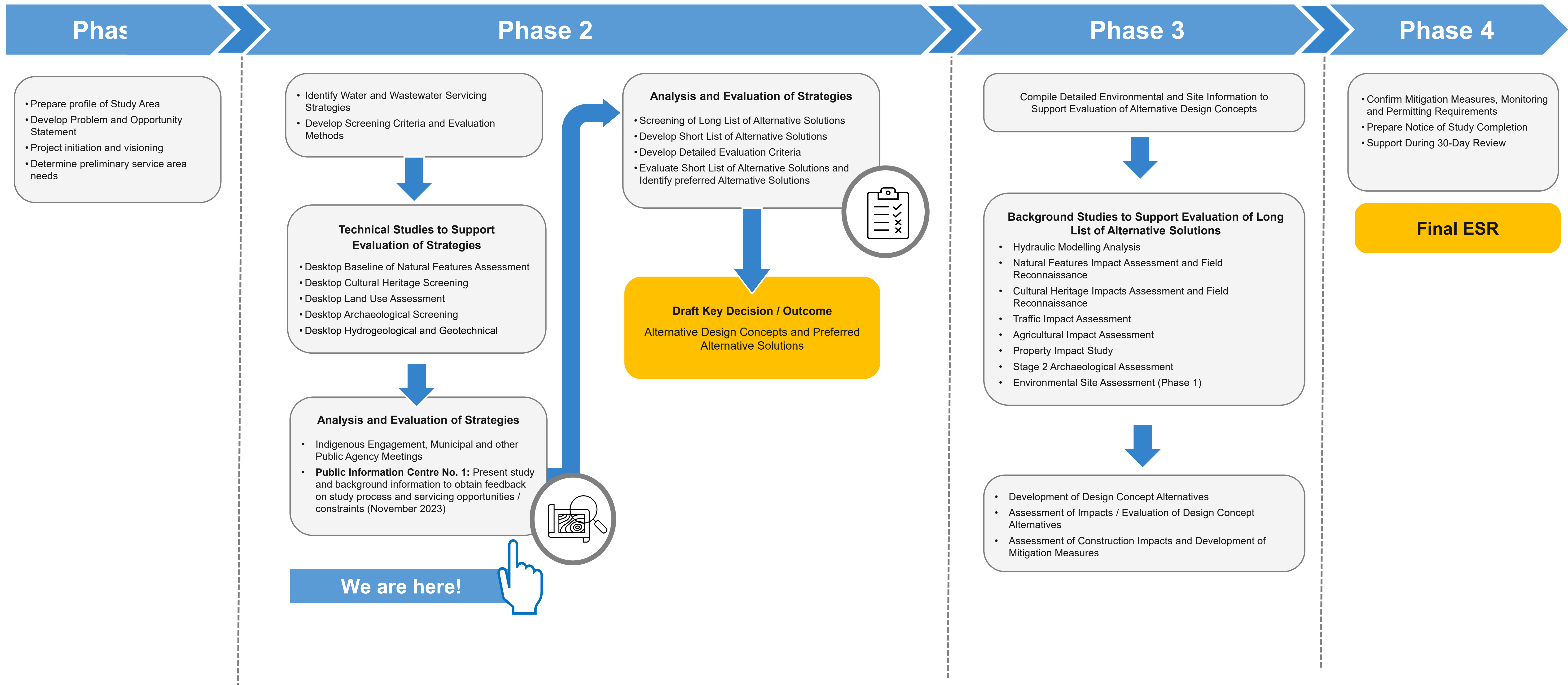
1. Potential to integrate with servicing growth beyond the current approved servicing boundaries.
2. Opportunity to extend planned master plan infrastructure to service projected growth to 2051 north of King Street.
3. Direct servicing to existing shallow sewers on Coleraine Drive may be challenging for larger development sites due to ground elevations. Detailed review required during this Environmental Assessment to ensure feasibility of connections and strategy.
4. New growth areas without existing adjacent wastewater infrastructure.
5. Coleraine Drive sewer capacity constraints to service future growth in the catchment area.
6. Opportunity to extend servicing from existing adjacent infrastructure.
7. Extension of servicing required. Opportunity for strategic oversizing and/or integration with future growth outside the current approved boundaries.
8. Opportunity to better understand flows into Bolton SPS prior to planned upgrades. Opportunity to divert flows away from Coleraine Drive sewer and utilize capacity of existing/extension of Albion-Vaughan trunk sewer.
9. Planned decommission of Harvestview SPS and diversion of flows to extension of Albion-Vaughan trunk sewer.





# Where are we in the process?

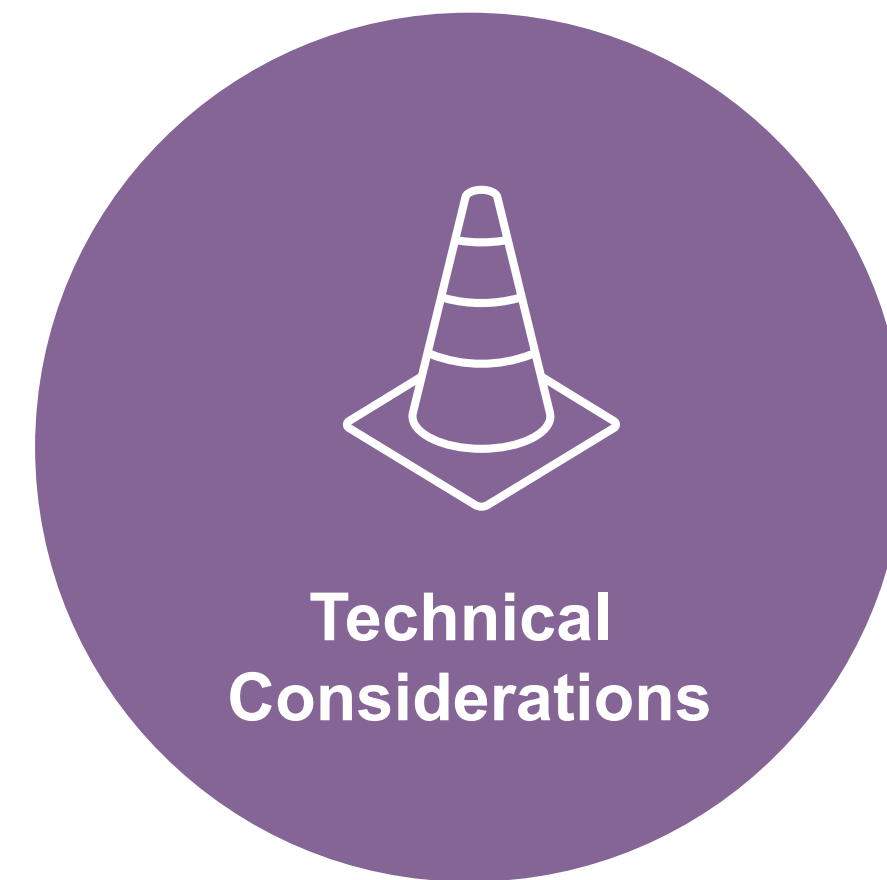
## Project Process





# How are the alternatives being evaluated?

## Evaluation of Strategies



- Ability to meet future needs.
- Minimize need for system upgrades.
- Ease of integration with existing system.
- Ease of construction and operation.



- Cost effective solution.
- Operation and maintenance costs.
- Lifecycle considerations.
- Funding and finance.



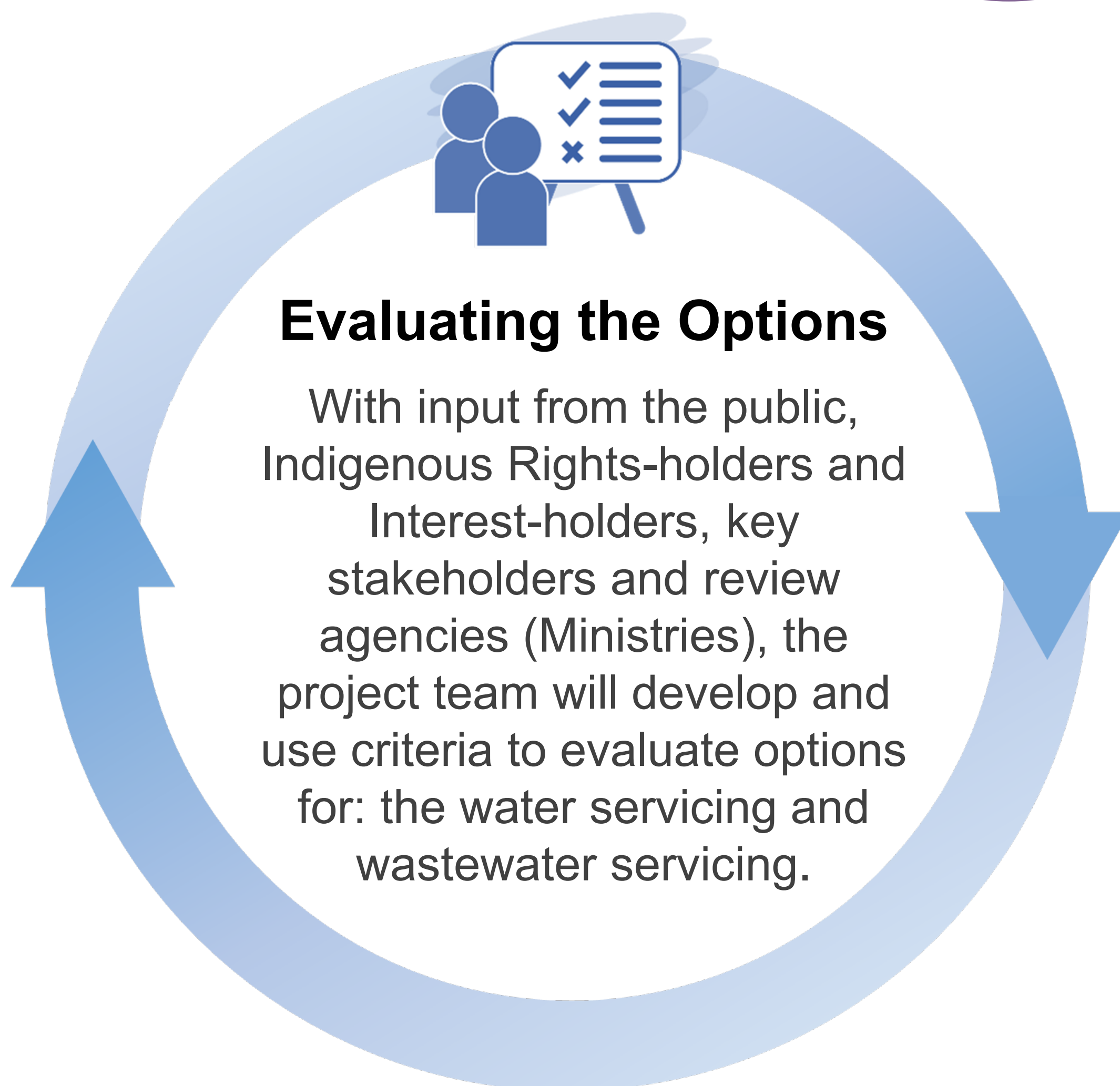
- Proximity to environmental features and protected areas.
- Potential effects on water resources and natural features.
- Geology, hydrogeology, contamination considerations.



- Existing and surrounding land use.
- Noise and odour considerations.
- Cultural heritage resources.
- Archaeological resources.



- Land use, land size, availability and location.
- Existing infrastructure.
- Potential impact on nearby properties.
- Ownership, legal and jurisdictional considerations.





# What studies were conducted? Background Studies to Support Evaluation of Concepts



## Desktop Baseline Natural Features Assessment

**Description of Study:** Inventory of Species at Risk, significant natural features, wildlife habitats and governing environmental policies.

**Study Purpose:** Determine the potential impacts to this project and any mitigation measures required.

## Desktop Cultural Heritage / Archaeological Stage 1

**Description of Study:** Identification of properties within the study area with cultural heritage classification and archaeological potential.

**Study Purpose:** Determine the constraints and recommendations for further investigations or studies.

## Desktop Socio-Economic and Agricultural Screening

**Description of Study:** Identification of the existing and future land uses within the study and of significant agricultural lands.

**Study Purpose:** Develop a solution that corresponds with future land uses.

## Hydrogeological and Baseline Geotechnical

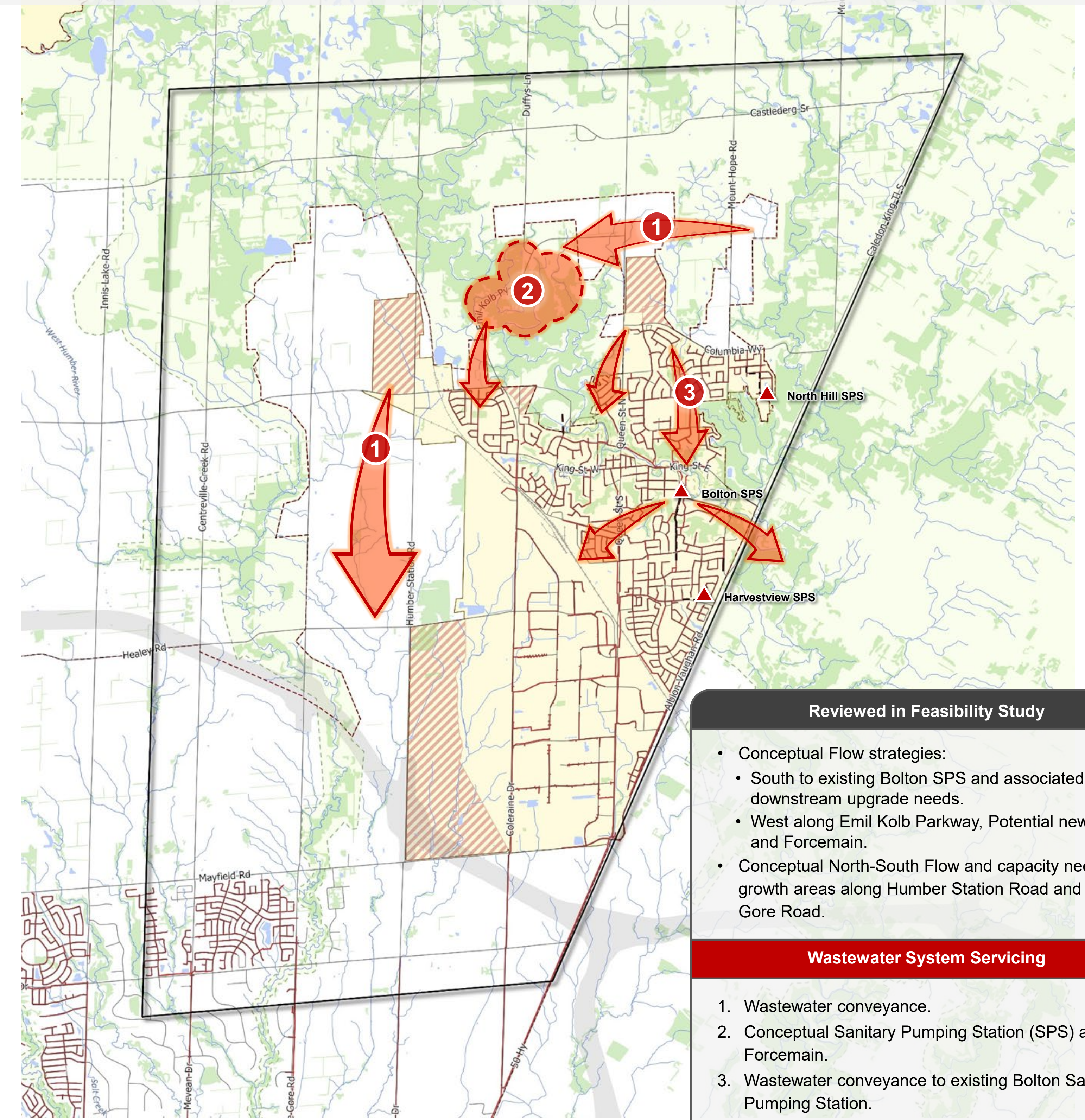
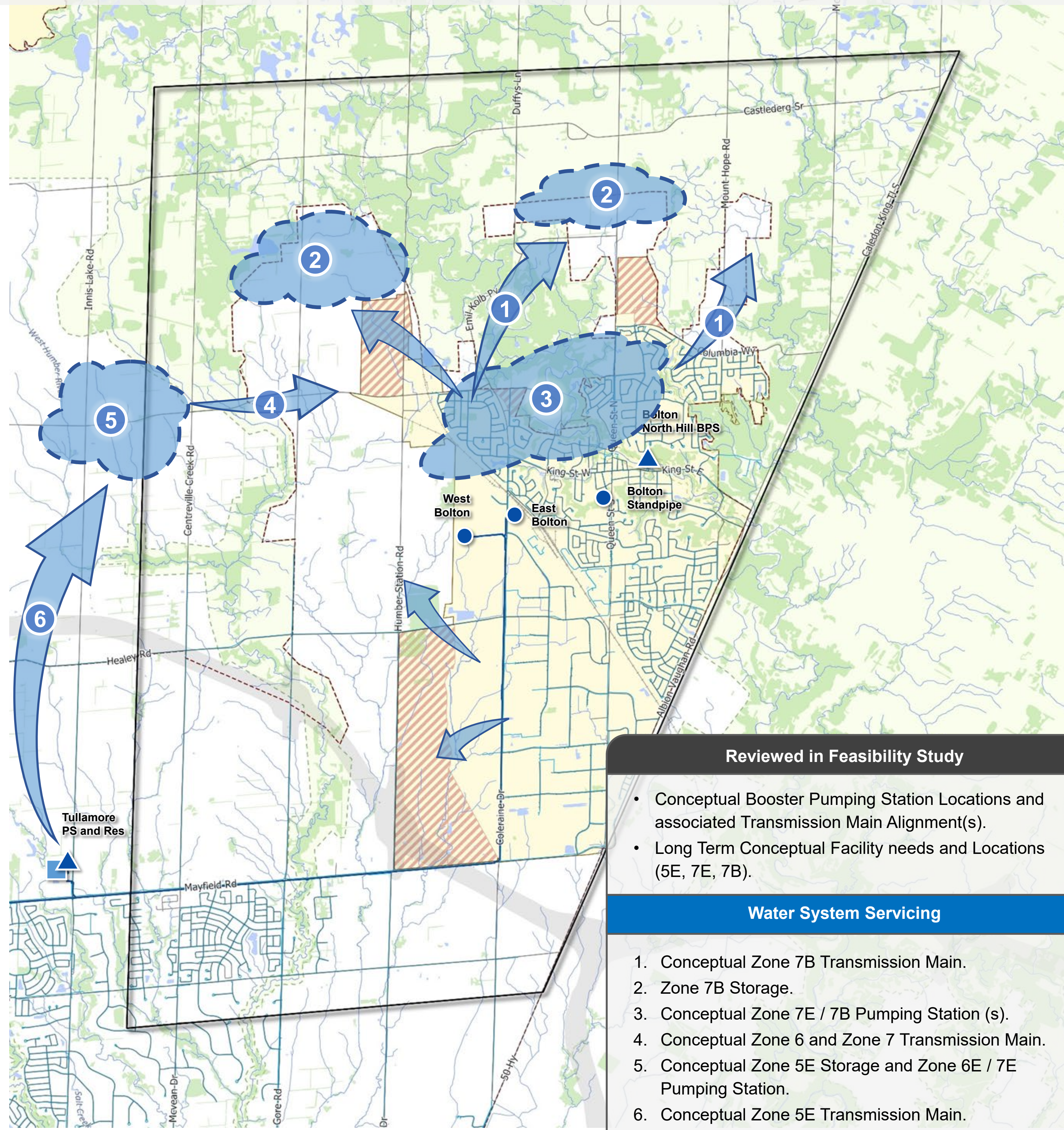
**Description of Study:** Establish the existing groundwater, soil, and rock conditions, hydrogeological conditions and Source Water Protection policy areas.

**Study Purpose:** Identify necessary mitigation measures on potential impacts to groundwater and surface water resources.



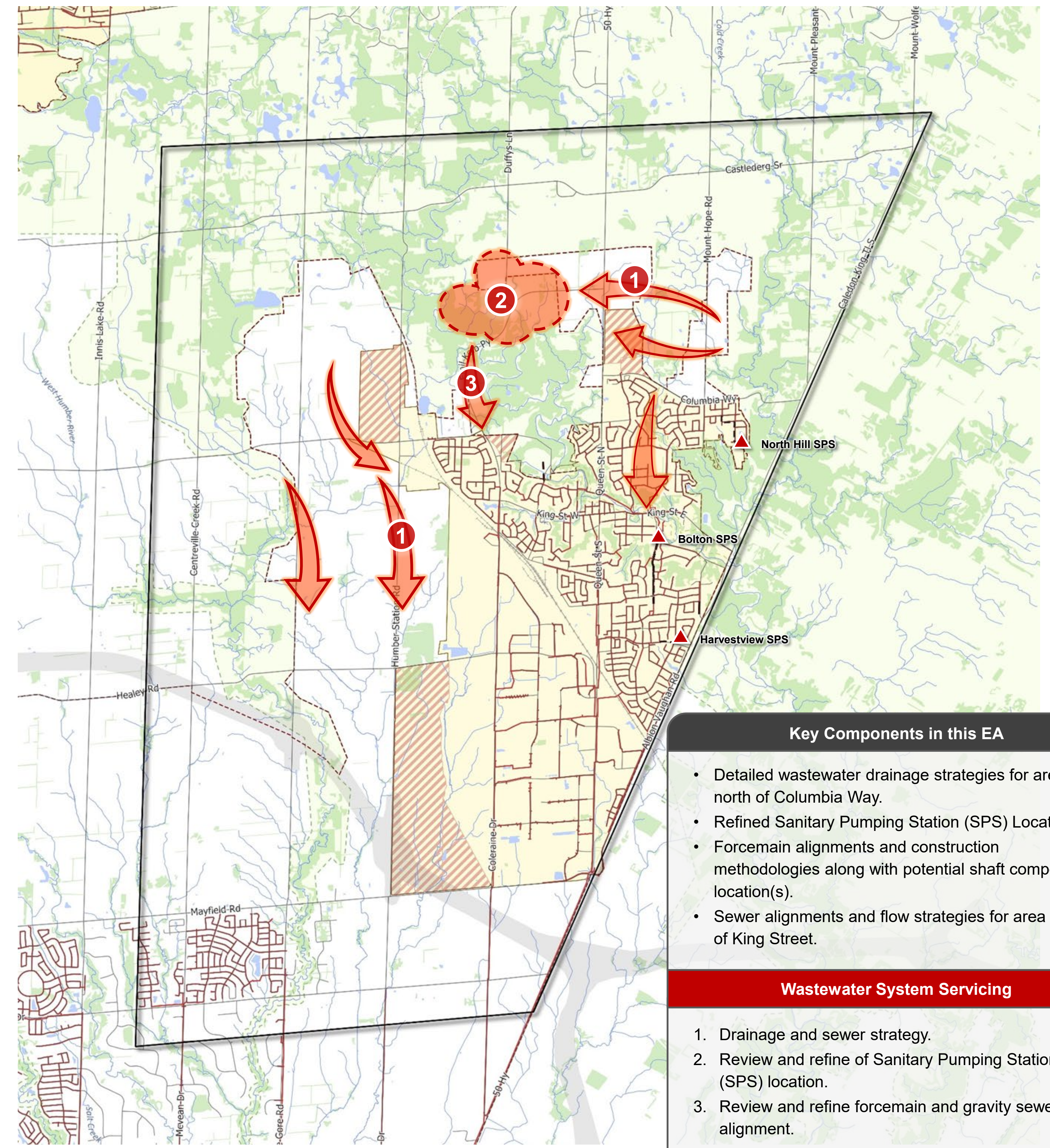
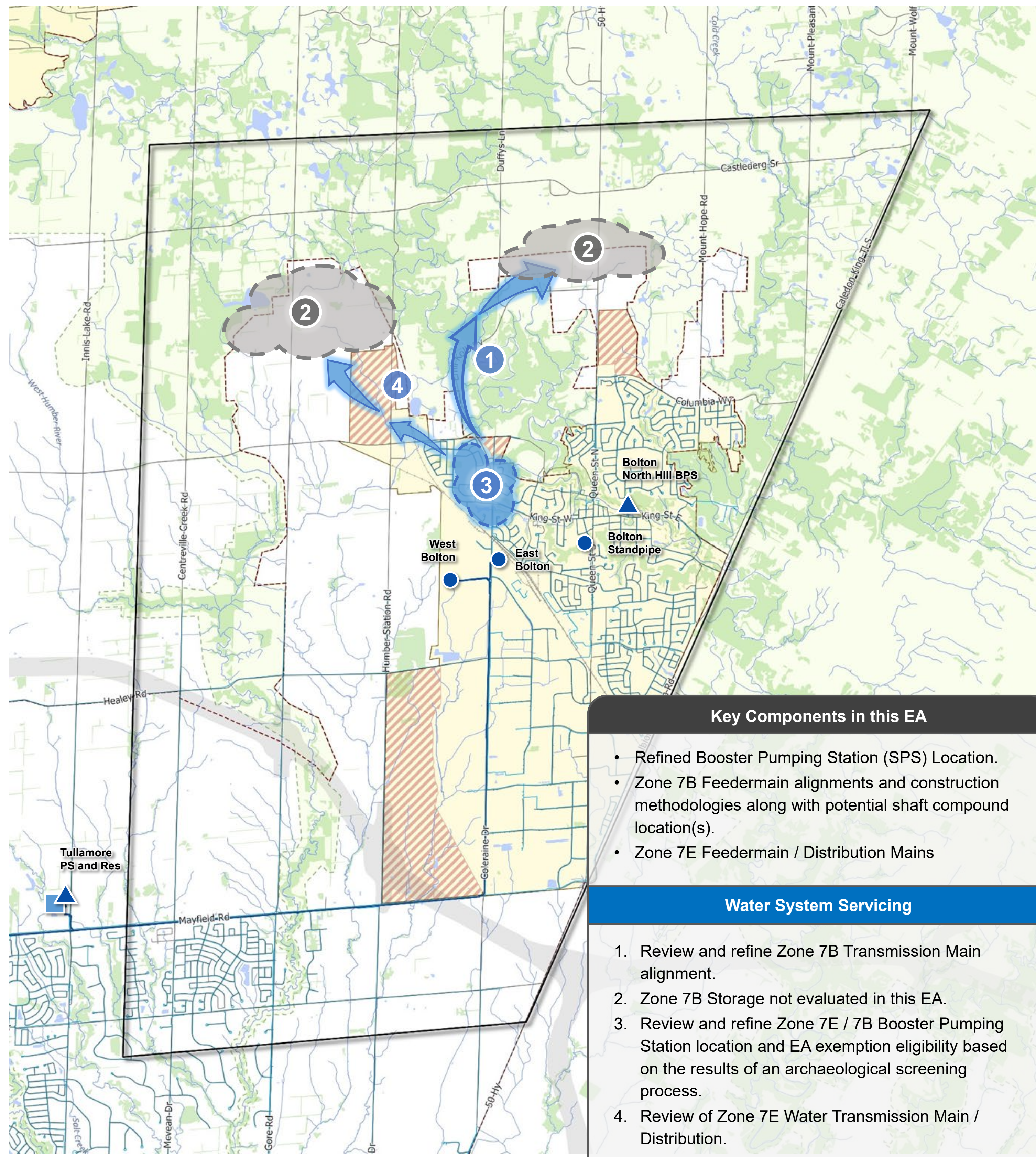
# What is needed within the Bolton area? Water and Wastewater Feasibility Concepts

The Bolton Water and Wastewater Feasibility Study identified infrastructure for servicing to buildout. The locations shown are conceptual.





# What is being evaluated within this study? Water and Wastewater Servicing Strategies

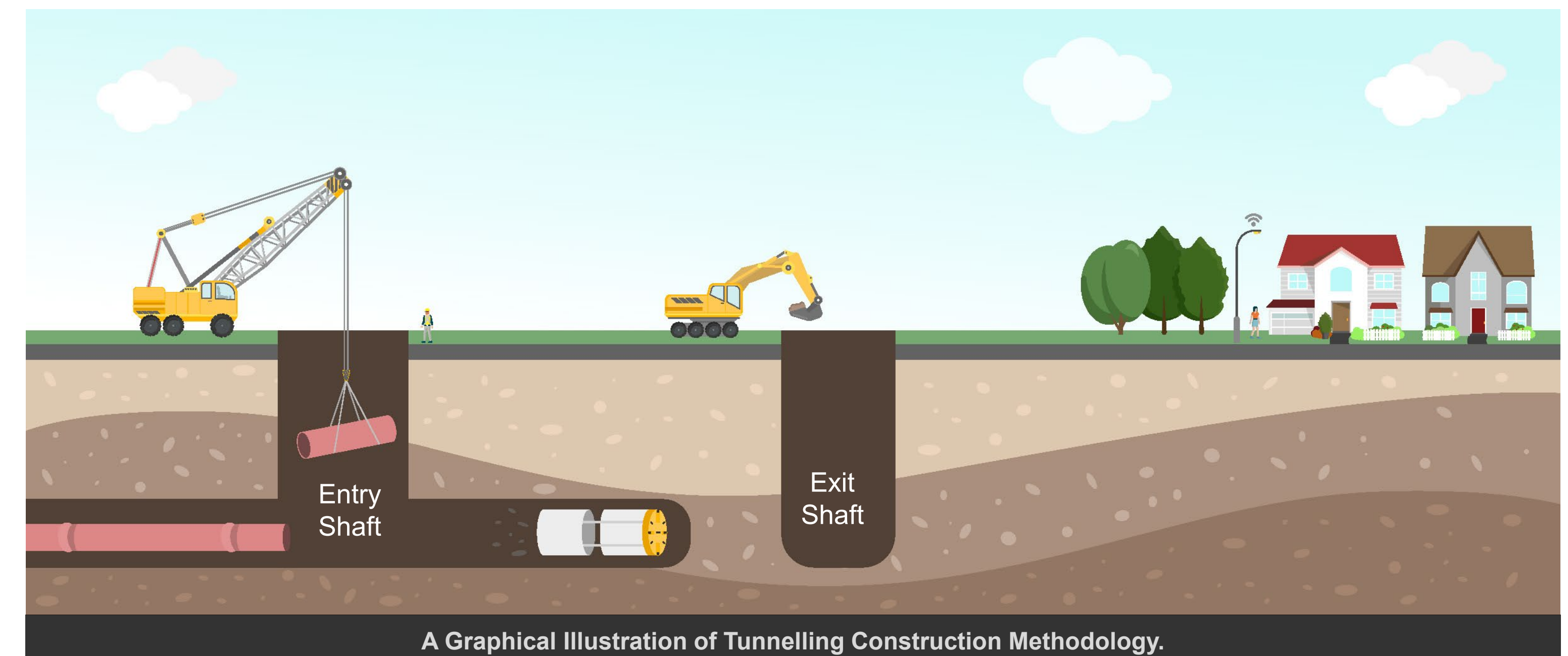
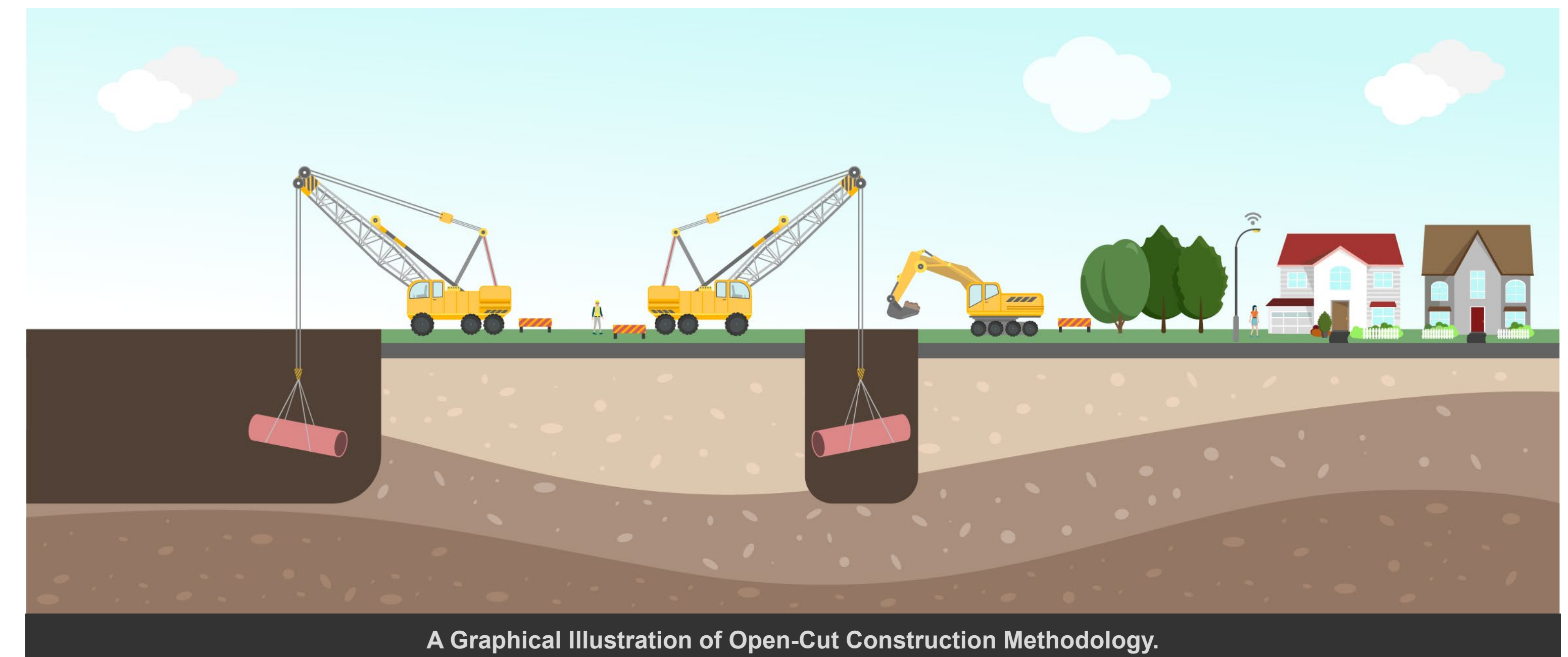




When evaluating servicing solutions for the **Bolton Water and Wastewater Capacity Improvements Study**, various construction methodologies will be considered including:

**Open-Cut Construction:** involves digging a trench to facilitate the installation of linear infrastructure (e.g., sewers). Because construction occurs on the surface over a stretch of time, open cut construction has the potential to increase traffic impacts and inconvenience to local residents and businesses.

**Tunnelling Construction:** involves digging shafts and using special equipment to tunnel underground between shafts. It is less intrusive than open cutting minimizing traffic disruptions and impacts to local residents and businesses. The only surface works for tunnelled construction are the entry and exit shafts located between tunnel drive lengths that could vary between 0.2 km and 2.1 km apart depending on the technology used.





## What are we doing next?

- Review and incorporate responses from PIC No. 1
- Investigate alternative water and wastewater servicing strategies, routes, and design concepts.
- Complete additional supporting technical studies:
  - Hydraulic Modelling Analysis
  - Natural Features Field Validation
  - Cultural Heritage Field Validation
  - Traffic Impact Assessment
  - Agricultural Impact Assessment
  - Property Impact Assessment
  - Stage 2 Archaeological Assessment
  - Environmental Site Assessment (Phase 1)
- Engagement with Indigenous Rights and Interest Holders.
- Consultation with public review agencies, and other interested stakeholders.
- Prepare for PIC No. 2

## Stay Engaged!

- ✓ Please sign in and take a comment sheet.
- ✓ Have a look at the project information on display and chat with the Project Team.
- ✓ Provide your feedback regarding the information presented.

Do you have any  
questions, comments, or  
want to stay up to date?

Please contact us  
anytime!

### Italia Ponce, P.Eng.

Project Manager, Regional Municipality of Peel  
10 Peel Centre Drive  
Brampton, ON L6T 4B9  
905-791-7800 ext. 4583

[Italia.ponce@peelregion.ca](mailto:Italia.ponce@peelregion.ca)



Additional project information can be found on the project website, which can be accessed by scanning the QR code with your smartphone.

Please note that information related to this study will be collected in accordance with the *Freedom of Information and Protection of Privacy Act*. All comments received will become part of the public record and may be included in the study documentation prepared for public review.

If you need any accommodations to provide comments and/or feedback for this study, please contact the Project Manager.