

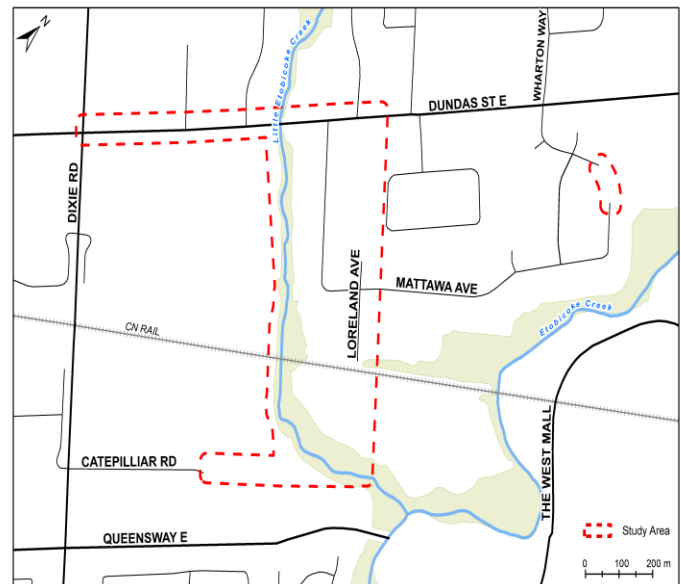
## Environmental Assessment Study

### NOTICE OF STUDY COMMENCEMENT SANITARY SEWER AND WATERMAIN IMPROVEMENTS, SOUTHEAST MISSISSAUGA

#### Background

The Region of Peel has initiated a Schedule 'B' Environmental Assessment (EA) for sanitary sewer and watermain improvements near Mattawa Avenue in the City of Mississauga. These improvements are needed to address long-term servicing needs in the Region to 2041 as identified in Peel Region's Water and Wastewater Master Plan.

The project will assess the needed improvements at several locations in the sanitary sewer and watermain systems located near Dundas Street East and Mattawa Avenue, as shown in the study area map. Proposed work may include rehabilitation, replacement, or new infrastructure.



#### How to Get Involved

A key element of the EA planning process is public consultation, which will be sought throughout the study. A Public Information Centre (PIC) will be held late summer 2018 to share project details and progress with the public. Information about the PIC will be advertised closer to the date it will be held on. Once the study has been completed a Project File Report will be prepared and available for 30 days for public review and comment.

For comments, questions or more information on the project, or if you wish to be added to the project mailing list, please get in touch with either of the contacts listed below:

Derek Gorzynski, P. Eng.  
Project Manager, Capital Works, Wastewater Division  
Region of Peel  
10 Peel Centre Drive  
Brampton, ON L6T 4B9  
905-791-7800, ext. 5013  
[Derek.Gorzynski@peelregion.ca](mailto:Derek.Gorzynski@peelregion.ca)

Mark Swan, P. Eng.  
Senior Project Manager  
Parsons Inc.  
4342 Queen Street, Unit 407  
Niagara Falls, ON L2E 7J7P  
289-294-6401  
[Mark.Swan@parsons.com](mailto:Mark.Swan@parsons.com)

This notice was first issued on July 5, 2018

---

With the exception of personal information, all comments will become part of the public record of the study. The study is being conducted according to the requirements of the Municipal Class Environmental Assessment, which is a planning process approved under Ontario's *Environmental Assessment Act*.