

### Construction update

Construction of the Seniors Health and Wellness Village (SHWV) at Peel Manor continues to progress towards completion. Construction is over 97% complete.

Recent accomplishments include the substantial completion of millwork at all levels, final finishes on floors 2, 3, and 4, and painting of the parking garage. We have also reached substantial completion of landscaping work, and the commissioning of building systems.

Check out some recent photos of the progress that has been made:



**Outdoor staff courtyard**



**Adult Day Services dining area**



**Fourth floor atrium**



**Second floor resident home area care desk**



**Adult Day Services courtyard**



**Fourth floor dining area**

## Resident move-in update

With construction of the facility nearing completion, our project teams are getting ready to complete a variety of important activities that are required prior to moving in. These activities include testing of all the building systems (e.g., HVAC (heating, ventilation, and air conditioning), lighting, access controls, etc.) to maximize comfort and safety. It also includes the configuration and testing of IT systems, the completion of inspections by various governing/regulatory bodies (including the Ministry of Long-Term Care), hiring of additional staff, completion of staff training within the new building and, of course, getting residents and families prepared for the move.

Completing these activities will take a few months. We also want to minimize impacts to residents, clients, and families during the winter holiday season. As such, we are targeting a move into the new building **by April 2024**.

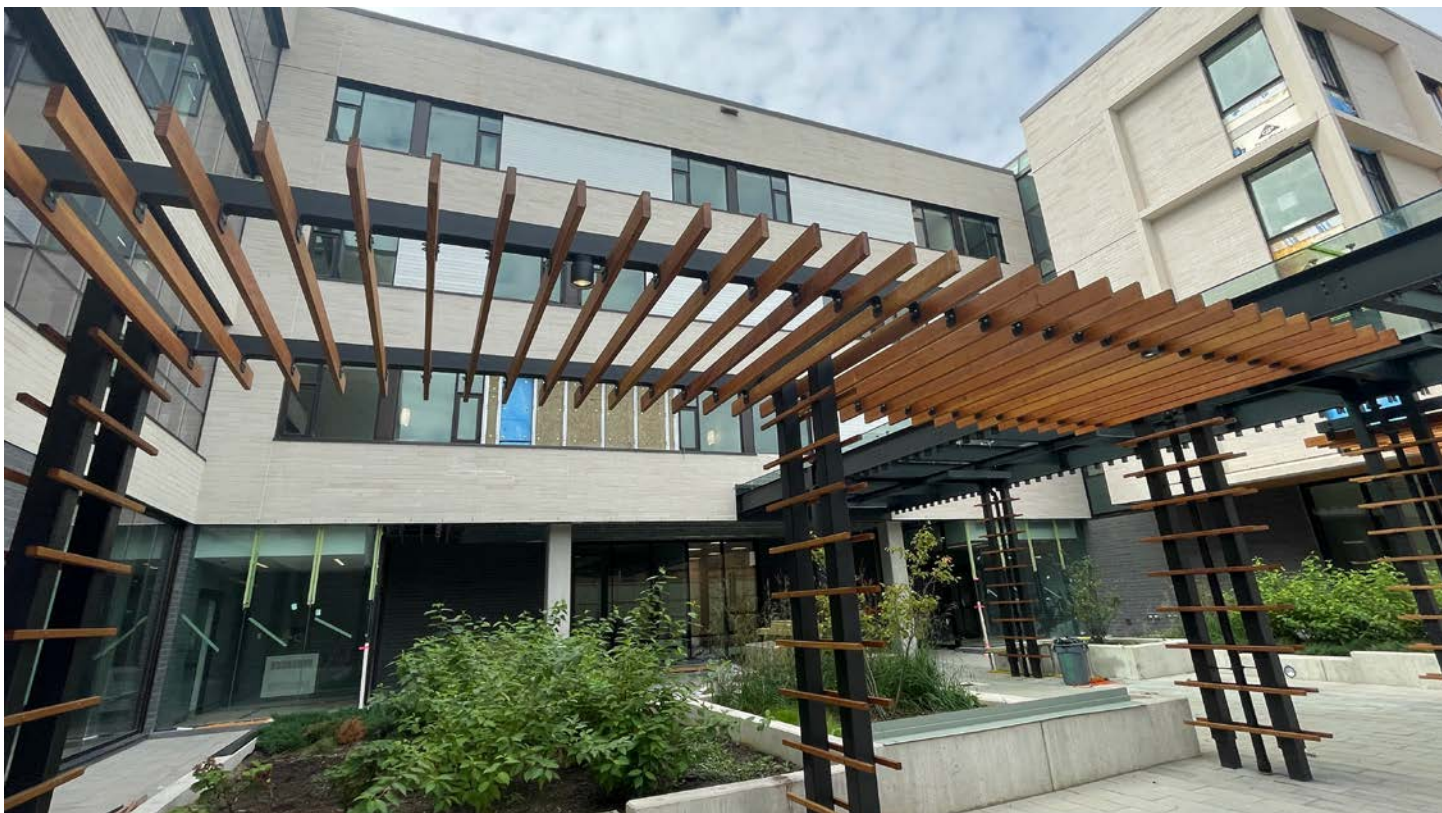
Construction-related activities at the site will continue beyond our resident move-in. For example, once we are in the new building, the current Peel Manor building will be demolished and replaced with a beautiful park.

## Resident room inventory

One of the key tasks that will need to be completed before moving to the SHWV at Peel Manor next year is a resident room inventory. This step will be planned and completed collaboratively with residents, families, staff, and volunteers.

This activity will involve a count of various personal belongings currently located within resident rooms at Peel Manor. Taking an inventory of these items will help ensure that we have the necessary resources available for when we move and will allow for a more efficient move-in.

Please be assured that the inventory will be conducted respectfully, with little-to-no disruption to residents and staff. All residents will be supported in decluttering personal items where possible, with a focus on safety and wellbeing in their new home. Full details will be shared with Peel Manor residents, staff, families, and caregivers soon.



## Service hub at a glance

While our long-term care home will occupy most of the space in the new facility, the SHWV at Peel Manor's main floor will be a dedicated service hub that supports the needs of seniors and caregivers living in the community. The service hub includes:

- **Adult Day Services (ADS):** featuring a full range of day and evening services for clients and caregivers, including mechanical lifts, 4 activity rooms, a multi-sensory room, an outdoor patio and greenspace, and a variety of dining options.
- **Integrated Care Centre (ICC):** providing wrap-around personal and clinical care for clients enrolled in our ADS program at Peel Manor. The ICC will also support the Ontario Seniors Dental Care Program (OSDCP) with 2 accessible dental chairs, and support clients in the community in need of support for activities of daily living, such as bathing/showering.
- **Respite Centre:** one of the largest community-supported, overnight respite facilities in Ontario, offering eight beds, 24/7, 365 days a year.
- **Community Spaces:** featuring a café & shop, hair salon, resource centre, meeting spaces, greenspaces, and more - accessible to our residents, clients, families, caregivers, and the visiting public.

Stay tuned for updates and information about services our community can look forward to at the SHWV at Peel Manor as we get closer to our grand opening.



The salon/spa area



The café area

## Staff training

As construction of the SHWV at Peel Manor progresses, we have begun to ramp-up training and orientation for staff. Staff from various departments, including nursing, maintenance, ADS, and more, have started to receive training and familiarize themselves with new systems and equipment. Some of the training has included:

- Laundry equipment operation.
- Operating ceiling lifts and tubs.
- Garbage and linen chute equipment and operation.

The successful training of staff at the SHWV at Peel Manor is a major priority for us, as it directly relates to the quality of care we provide each day. We will continue to train our staff in the coming months to ensure they have the appropriate knowledge and skills and are comfortable and confident when we welcome residents, clients, and other stakeholders to the SHWV at Peel Manor.

In the near future, we will be hiring staff to join the team at the SHWV at Peel Manor. Interested in applying? Keep an eye on [peelregion.ca/jobs](https://www.peelregion.ca/jobs) for updates!



## New Integrated Care Centre manager



We are pleased to welcome Kelly English, who has been hired as the Integrated Care Manager for the Seniors Health and Wellness Village. Kelly will be overseeing and supporting operations of the integrated care model and other service offerings as part of the SHWV at Peel Manor.

Kelly previously worked at Halton Region’s Services for Seniors Division where she was the Continuous Quality Improvement and Risk Manager. Kelly championed person-centred care and ensured the legislative and quality requirements in the operation of three LTC homes, day programs, and four assisted living sites were met. Kelly is also a former Peel Region employee, working during the construction phase of Tall Pines and Malton Village LTC, and later worked as a Social Worker.

Kelly is very excited to support the provision of high-quality care to clients in an interprofessional environment and has been working closely with the project team, managers, and Peel Manor staff to support readiness for the opening of the SHWV at Peel Manor.

## New Social Enterprise manager



We are also excited to share that Cheryl Bradley is joining the team as the manager of the new Social Enterprise, which will be operated in partnership with Peer Senior Link and Punjabi Community Health Services.

Cheryl is a graduate of the Culinary Arts and Management program from Humber College, as well as a graduate from the University of Ottawa’s Nutrition Management program. She has spent over 30 years working in long-term care and is looking forward to meeting all of our residents, ADS clients, caregivers, staff, and visitors.

## Contact us

Please email us at Peel Manor [seniorsvillage@peelregion.ca](mailto:seniorsvillage@peelregion.ca) or call **905-791-7800** should you have any questions or thoughts about the SHWV at Peel Manor.

For more information on the SHWV at Peel Manor, please visit: [peelregion.ca/peelmanorredevelopment](https://peelregion.ca/peelmanorredevelopment)