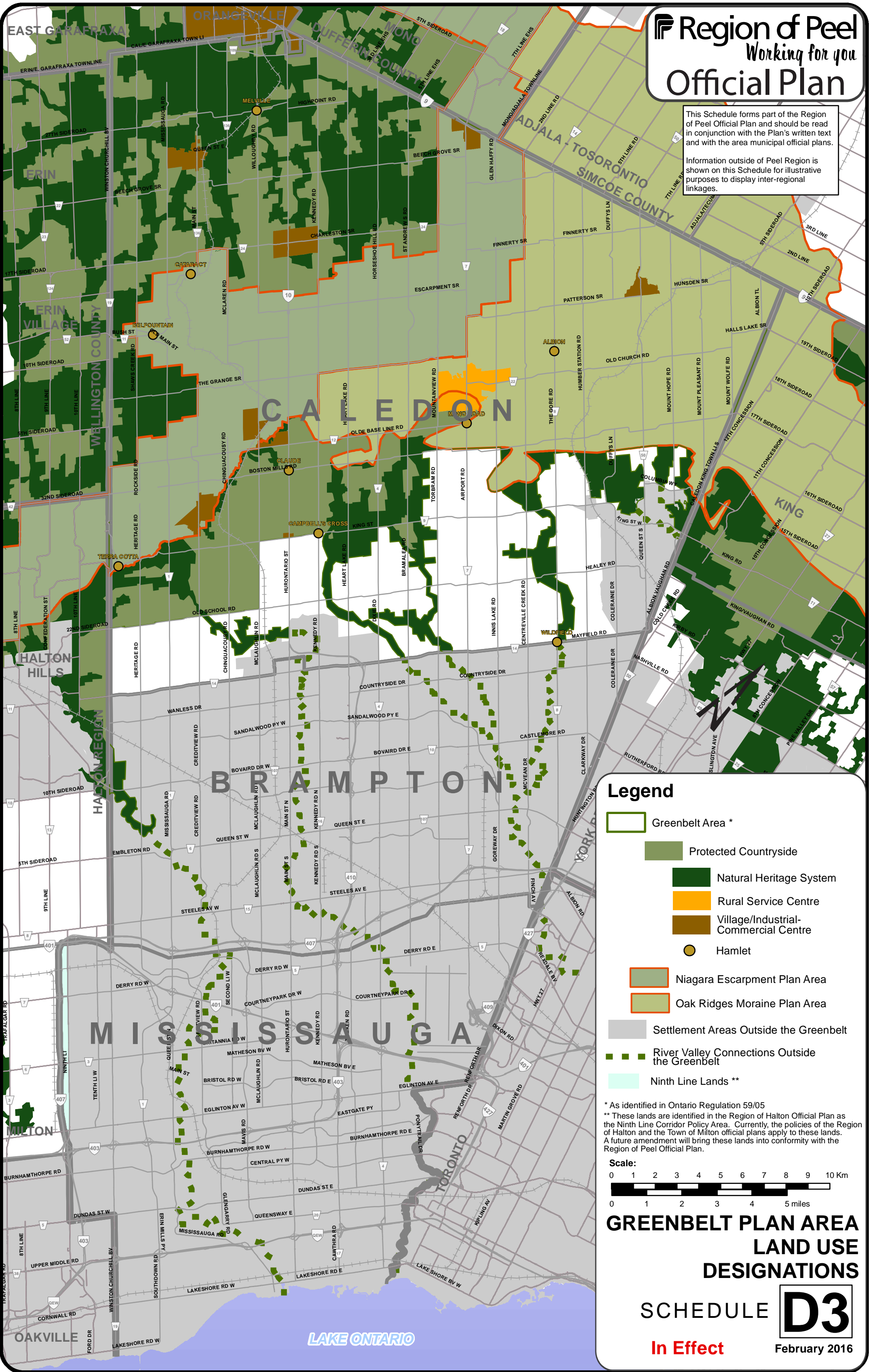


This Schedule forms part of the Region of Peel Official Plan and should be read in conjunction with the Plan's written text and with the area municipal official plans.

Information outside of Peel Region is shown on this Schedule for illustrative purposes to display inter-regional linkages.

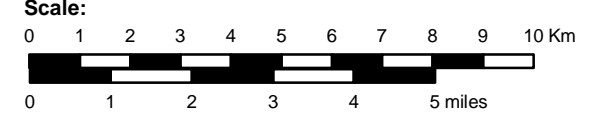


**Legend**

- Greenbelt Area \*
- Protected Countryside
- Natural Heritage System
- Rural Service Centre
- Village/Industrial-Commercial Centre
- Hamlet
- Niagara Escarpment Plan Area
- Oak Ridges Moraine Plan Area
- Settlement Areas Outside the Greenbelt
- River Valley Connections Outside the Greenbelt
- Ninth Line Lands \*\*

\* As identified in Ontario Regulation 59/05

\*\* These lands are identified in the Region of Halton Official Plan as the Ninth Line Corridor Policy Area. Currently, the policies of the Region of Halton and the Town of Milton official plans apply to these lands. A future amendment will bring these lands into conformity with the Region of Peel Official Plan.



**GREENBELT PLAN AREA  
LAND USE  
DESIGNATIONS**

SCHEDULE **D3**  
**In Effect** February 2016