

Peel's Labour Market Performance

Fourth Quarter 2019 (vs Fourth Quarter 2018)

Data Source: StatsCan - Labour Force Survey - arch 2019

Quarterly Averages

Working Age Population

(persons who are of working age: 15+ years)

Total

1,359,700 persons



Absolute Change

+1.6%

Labour Force

(persons who are able to work and are working or looking for work)

934,100 persons



+6.9%

Employed Labour

(persons who are working)

860,000 persons

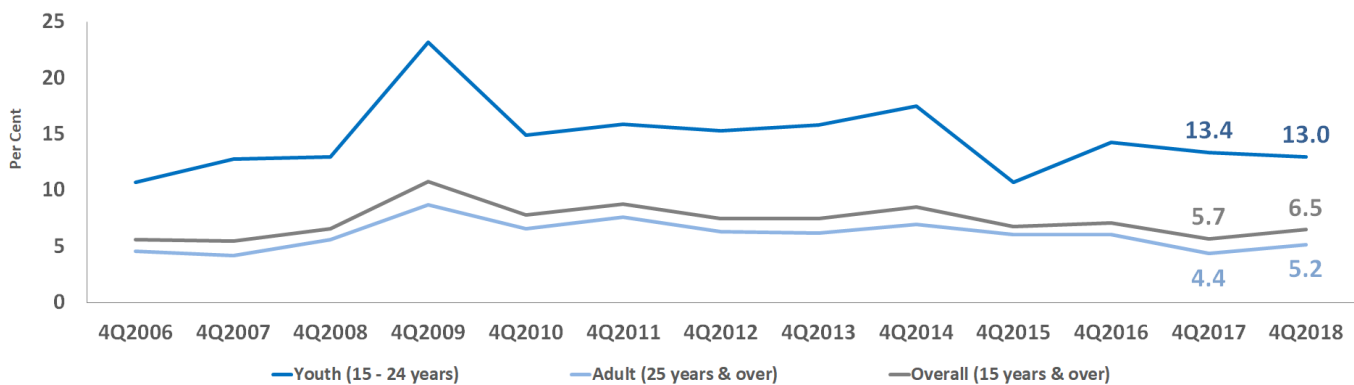


+ .0%

1 person = 10,000 persons

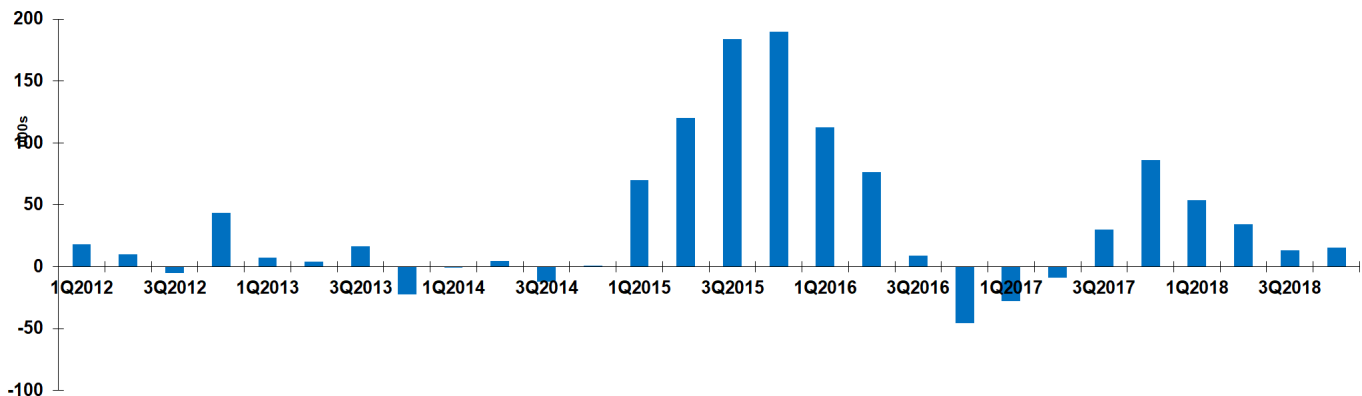
Peel's labour market registered another positive quarterly change in key indicators in Q4 2018.

Peel's Quarterly Average Unemployment Rates



Peel's quarterly average labour force grew at a faster pace than quarterly average employment, leading to a 0.8 percentage points increase in the quarterly average unemployment rate between Q4 2017 and Q4 2018.

Changes in Quarterly Average Employment in Peel (in thousands): 2008 – 2018



Peel's quarterly average employment registered its sixth consecutive quarterly growth in Q4 2018.

Sectorial Changes in Quarterly Average Employment by Major Industries

Goods-Producing Industries

Total: 184,600 persons up by 5.2%



Manufacturing: +3.4%

Construction: +4.6%

Service Industries

Total: 678,800 persons up by 1.0%



Trade: -8.3%

Transportation & Warehousing: +4.3%

The goods-producing sector added 9,100 new positions to lead growth, but the service sector added 6,400 new jobs to support the overall growth in quarterly average employment in Q4 2018.

Change in Employment by Type

Full-time



Total: 710,300 persons

up by 1.1%

Part-time



Total: 153,100 persons

up by 5.3%

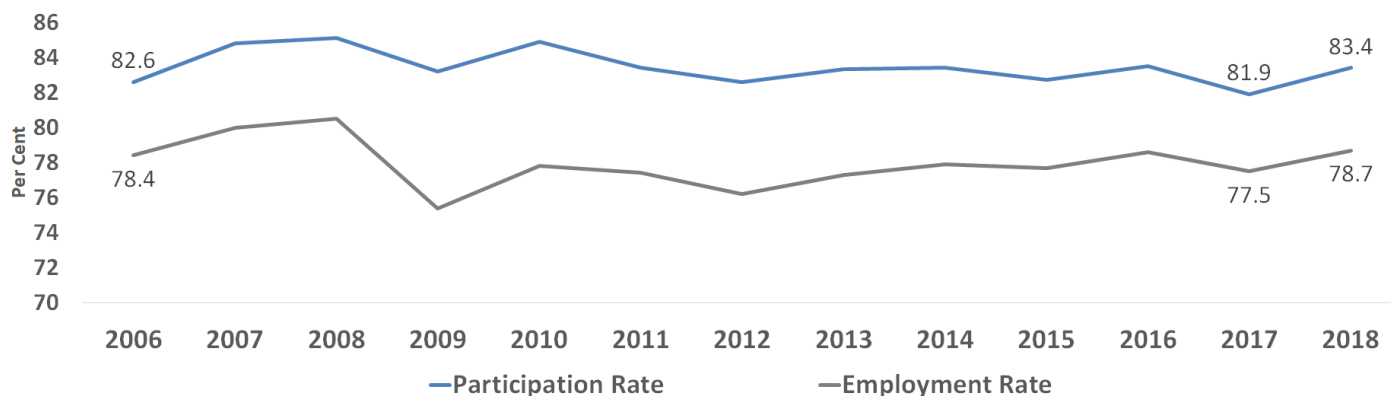
Both full-time and part-time employment grew; however, part-time employment grew at a faster pace.

Unemployment Rates by Age Group

Age Groups	Unemployment Rates	Year-Over-Year Change (in percentage points)
15-64	6.6%	+0.8
25-64	5.3%	+0.8
20-24	12.1%	-1.0
15-19	15.4%	+1.4

Youth (20-24 years) was the only age group that recorded a fall in the unemployment rate.

Participation and Employment Rates in Peel for the Core Age Group (25 - 65 years)



Employment and participation rates for the core working-age group increased in Q4 2018.