

LABOUR MARKET CHANGES IN PEEL FOURTH QUARTER 2016

Business Intelligence Centre of Excellence (BICE) | Judith McWhinney (Ext. 4616) | Eucharia Igwe (Ext. 8588)

First decline in Average Quarterly Employment in Peel in nine quarters

QUARTERLY AVERAGE LABOUR FORCE



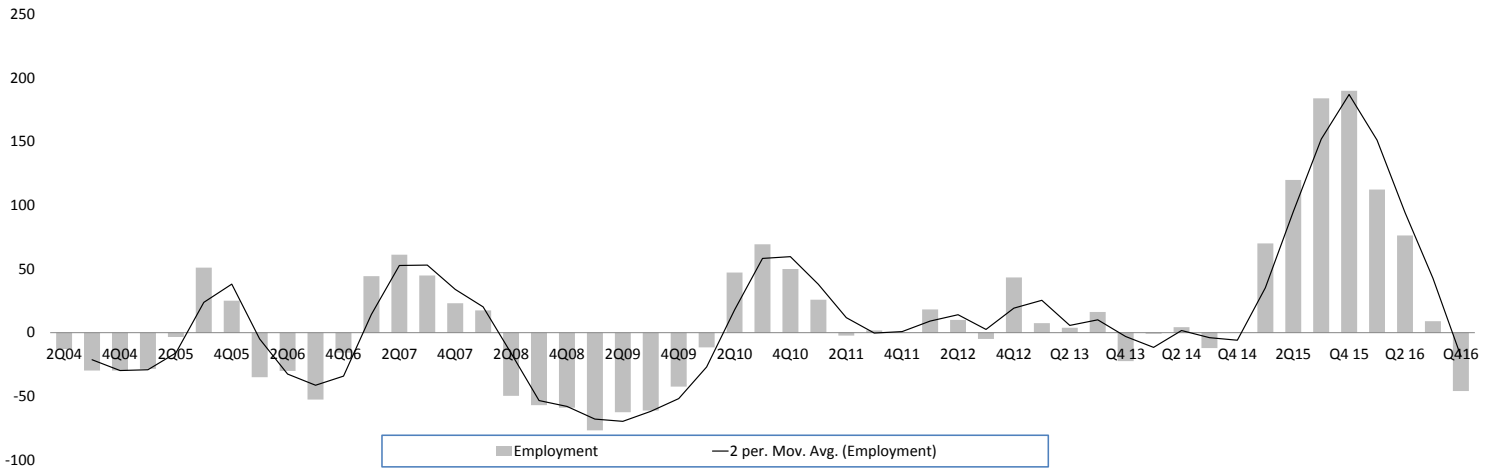
- 5.3%
-45,600 persons

QUARTERLY AVERAGE EMPLOYMENT



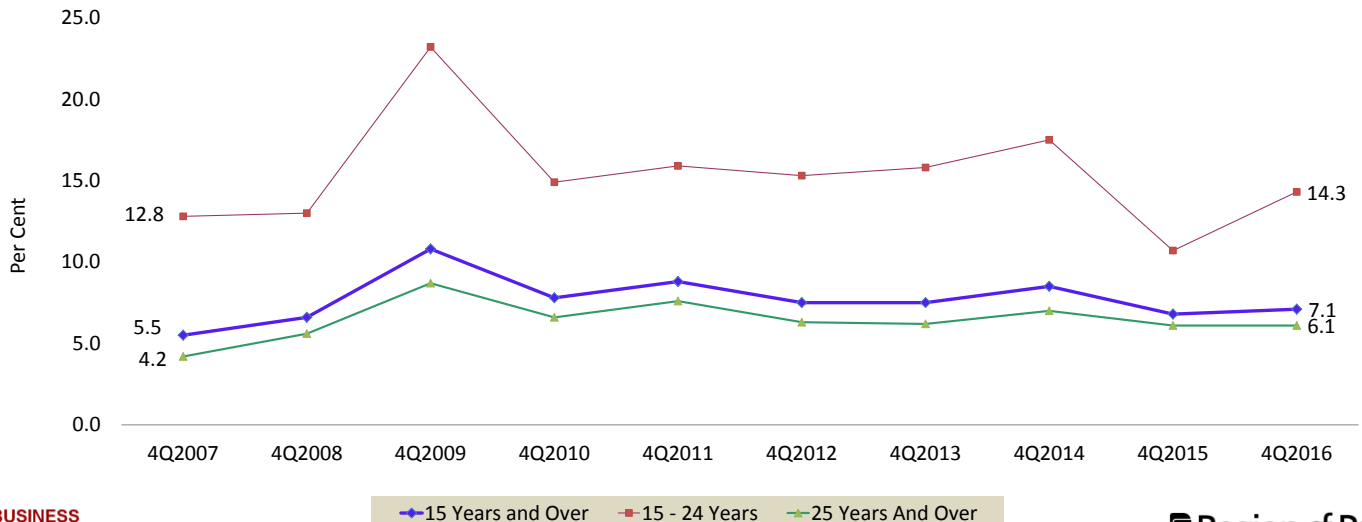
+ 5.7%
-45,800 positions

CHANGE IN QUARTERLY AVERAGE EMPLOYMENT IN PEEL (IN THOUSANDS): 2004 - 2016



Quarterly average unemployment rate declined in Q4 2016

QUARTERLY AVERAGE UNEMPLOYMENT RATE IN PEEL



LABOUR MARKET CHANGES IN PEEL

FOURTH QUARTER 2016

Business Intelligence Centre of Excellence (BICE) | Judith McWhinney (Ext. 4616) | Eucharia Igwe (Ext. 8588)

Highlights of Labour Market Changes in Peel in Q4 2016

QUARTERLY AVERAGE EMPLOYMENT BY MAJOR INDUSTRIES

GOODS PRODUCING INDUSTRIES



+ 13.6%

SERVICES INDUSTRIES



- 10.2%

CHANGE IN EMPLOYMENT BY TYPE

FULL TIME



- 4.6%

-31,200 positions

PART TIME



- 11.2%

-14,600 positions

INDICATORS BY AGE GROUPS

AGE	UNEMPLOYMENT RATE	YEAR OVER YEAR CHANGE IN UNEMPLOYMENT RATE (in percentage points)
25+	6.1%	0.0
20-24	12.8%	+4.1
15-19	18.7%	+3.4

SELECTED LABOUR MARKET INDICATORS IN PEEL

