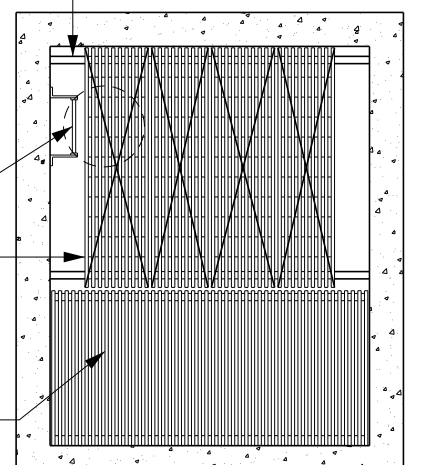
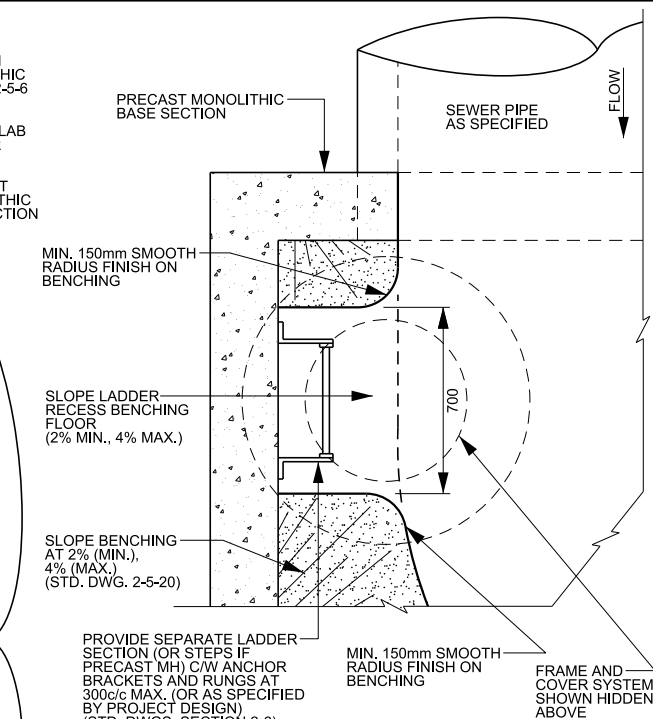


TYPICAL PLAN VIEW



- NOTE**
1. REFER TO STANDARD DRAWING 2-5-1 FOR GENERAL NOTES PERTAINING TO PRECAST MAINTENANCE HOLES.
 2. REFER TO STANDARD DRAWING 2-5-9 FOR TYPICAL INSTALLATION OPTIONS AND REQUIREMENTS..
 3. FOR PIPE TO MAINTENANCE HOLE SIZING REFERENCE STD. DWG. 2-5-21.
 4. FOR PIPE SIZE LESS THAN 600mmØ NON PRESSURE DESIGN IS PERMITTED. PIPE SIZES EQUAL TO OR GREATER THAN 600mmØ SHALL BE DESIGNED TO PRESSURE. CHAMBERS FOR PIPE SIZES EQUAL TO OR GREATER THAN 600mmØ SHALL USE PRESSURE DESIGN AS PER AMERICAN CONCRETE INSTITUTE (ACI) 350-06 CODE REQUIREMENTS FOR ENVIRONMENTAL ENGINEERING CONCRETE STRUCTURES.
 5. FOR TAPERED TOP SECTIONS THE LADDER SHALL ALWAYS BE INSTALLED ON THE SIDE WITH VERTICAL WALL.
 6. FOR PIPES GREATER THAN 600mm DIAMETER LADDER RECESS SHALL BE PROVIDED (STD. DWG. 2-5-10, 2-5-11).

	PUBLIC WORKS STANDARD DRAWING		REV. DATE: AUGUST 2020	
	REVISION NUMBER: 2		FOR REVISION TRACKING REFER TO STD. DWG. 2-0-2	
APPROVED BY	A.P.		DRAWN BY	AINLEY GROUP
STD. DWG. NUMBER	2-5-11		SCALE	N.T.S.

NEW SANITARY SEWER CONSTRUCTION
 TYPICAL 2400mmx3000mm PRECAST RECTANGULAR
 MAINTENANCE HOLE DETAILS