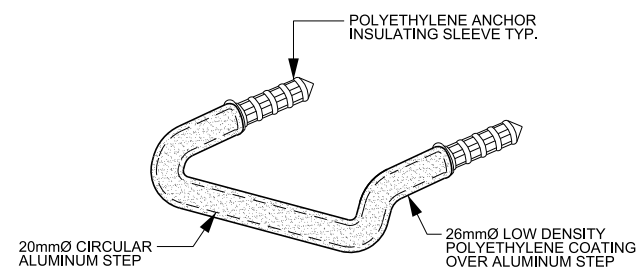
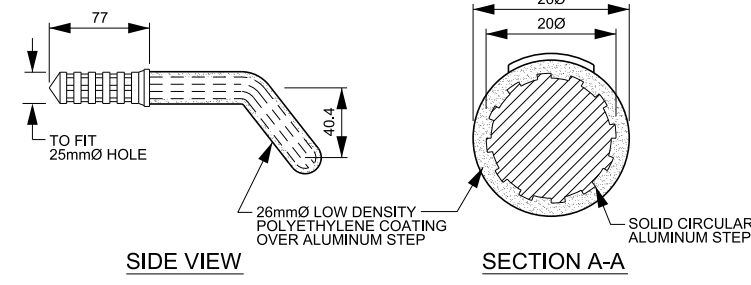
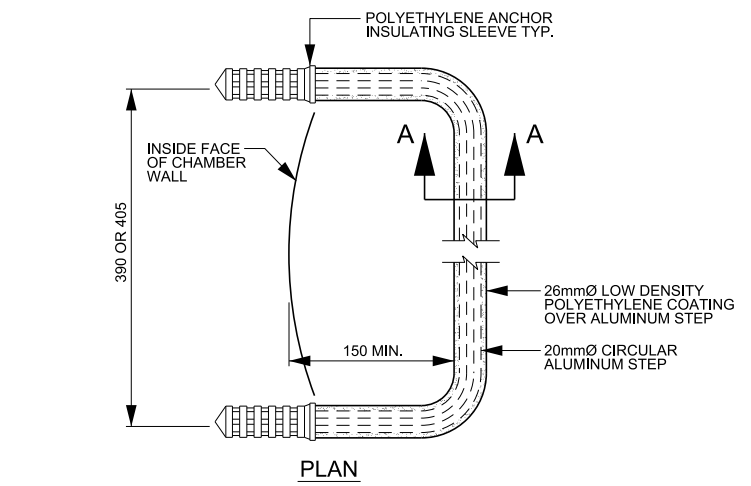


AUXILIARY VIEW
TYPICAL ALUMINUM STEP



AUXILIARY VIEW
TYPICAL POLYETHYLENE COATED ALUMINUM STEP

LADDER SHALL BE USED IN NEW CONSTRUCTION UNLESS SPECIFIED IN PROJECT DESIGN

NOTE: THIS DRAWING IS BASED ON OPSD 405.020, TYPE A CIRCULAR SOLID ALUMINUM STEPS AND SHOULD BE READ IN CONJUNCTION WITH ALL APPLICABLE ASSOCIATED OPSD DRAWINGS AND REVISIONS.

ALUMINUM STEPS ARE NOT TO BE USED FOR AWWA C30X SERIES (CPP) PRESSURE TESTED SANITARY SYSTEMS. REFER TO ANCHORING DETAIL FOR LADDER OR SAFETY LANDINGS STD. DWG. 2-7-10.

NOTE

1. REFER TO STANDARD DRAWING 2-5-1, 2-7-1 AND 2-8-1 FOR GENERAL NOTES PERTAINING TO PRECAST MAINTENANCE HOLES.
2. ALL ALUMINUM COMPONENTS SHALL BE FABRICATED FROM 6000 SERIES STRUCTURAL ALUMINUM.
3. ALL ALUMINUM IN CONTACT WITH CONCRETE SHALL RECEIVE TWO COATS OF BITUMINOUS PAINT.
4. SUBMIT SHOP DRAWINGS TO THE CONTRACT ADMINISTRATOR FOR INFORMATION. ALL DRAWINGS SHALL BEAR THE SIGNATURE AND SEAL OF A PROFESSIONAL ENGINEER LICENSED TO PRACTISE IN ONTARIO.
5. IF 25% OR MORE OF EXISTING STEPS NEED TO BE REPLACED AS PART OF REHABILITATION WORKS, THEN REMAINING STEPS SHALL BE PROPERLY REMOVED AND REPLACED WITH LADDER.

NEW CONSTRUCTION		REHABILITATION
FULL EXCAVATION	PARTIAL EXCAVATION	NO EXCAVATION
INTERNAL		EXTERNAL
ROW	FLOOD PLAIN	EASEMENT
I/I	H2S	SECURITY



**PUBLIC WORKS
STANDARD DRAWING**

**MAINTENANCE HOLE APPURTENANCES
STEP DETAILS**

REV. DATE: AUGUST 2020

REVISION NUMBER: 2 FOR REVISION TRACKING REFER TO STD. DWG. 2-0-2

APPROVED BY	DRAWN BY
A.P.	AINLEY GROUP
STD. DWG. NUMBER	SCALE
2-6-11	N.T.S.