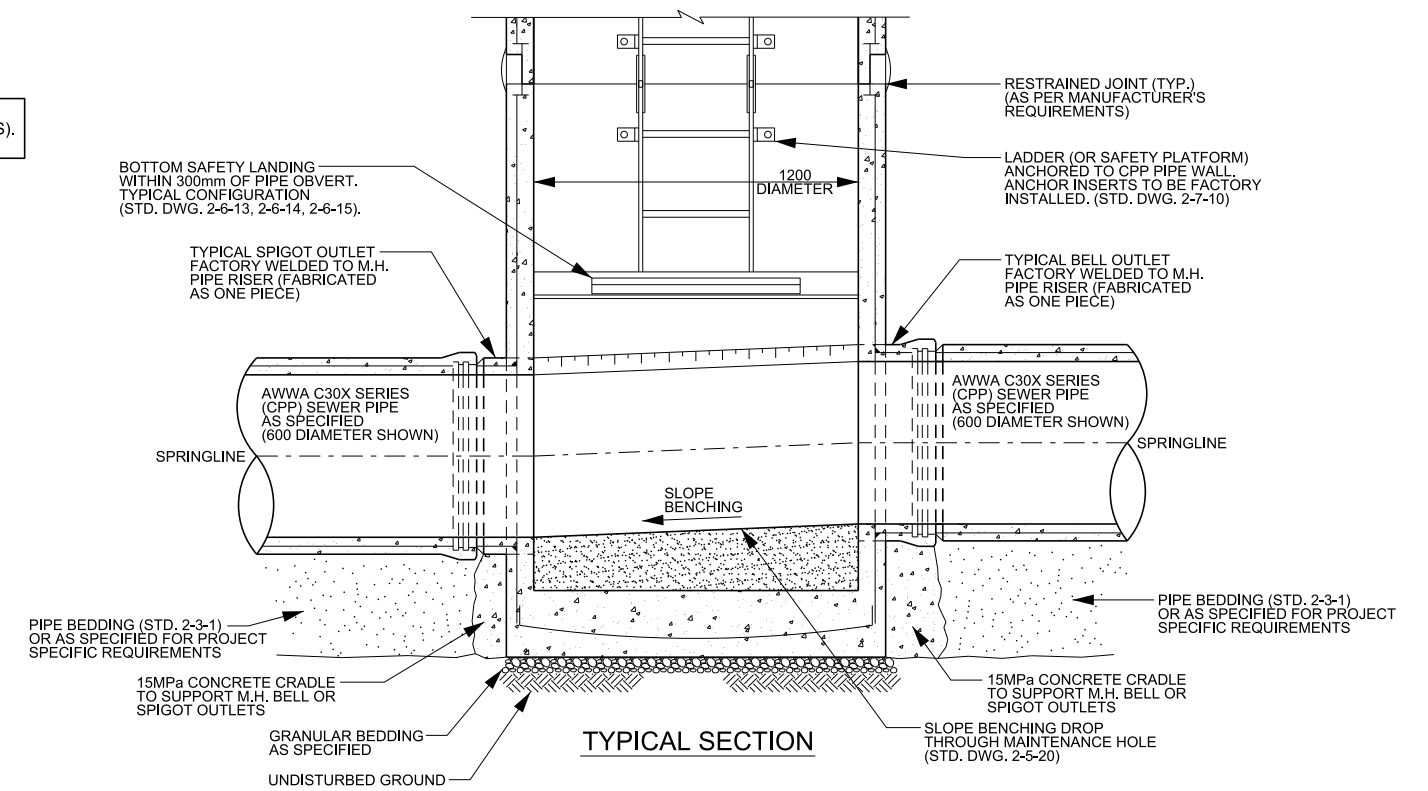


MAXIMUM CPP PIPE SIZE  
600mm STRAIGHT THROUGH, 450mm FOR RIGHT ANGLE  
(STD. DWG. 2-7-11)



**NOTE**

1. REFER TO STANDARD DRAWING 2-7-1 FOR GENERAL NOTES PERTAINING TO CPP MAINTENANCE HOLES.



**PUBLIC WORKS  
STANDARD DRAWING**

**NEW AWWA C30X SERIES (CPP) PRESSURE TESTED SANITARY SYSTEMS**

**TYPICAL 1200mm DIAMETER CPP MAINTENANCE  
HOLE DETAILS WITH 600mm DIAMETER PIPE**

REV. DATE: AUGUST 2020

REVISION NUMBER: 2 FOR REVISION TRACKING REFER TO STD. DWG. 2-0-2

APPROVED BY DRAWN BY

A.P. AINLEY GROUP

STD. DWG. NUMBER SCALE

**2-7-2** N.T.S.