

# Transportation Issues and Challenges

## Regional Council Workshop

May 17, 2007

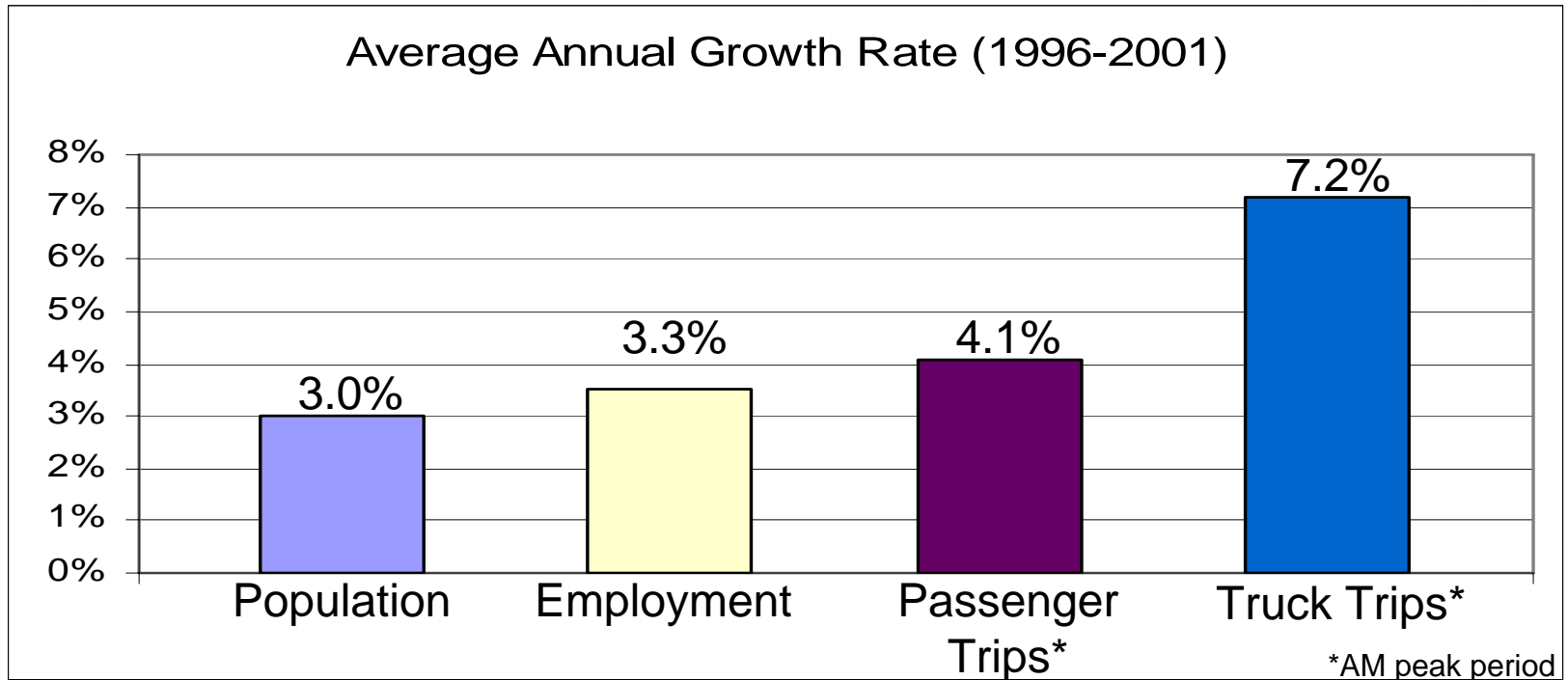


# Presentation Outline

- Transportation Trends
- Key Messages from Peel Long Range Transportation Planning Study
- Issues and Challenges
- Current Planning Initiatives
- Concluding Remarks

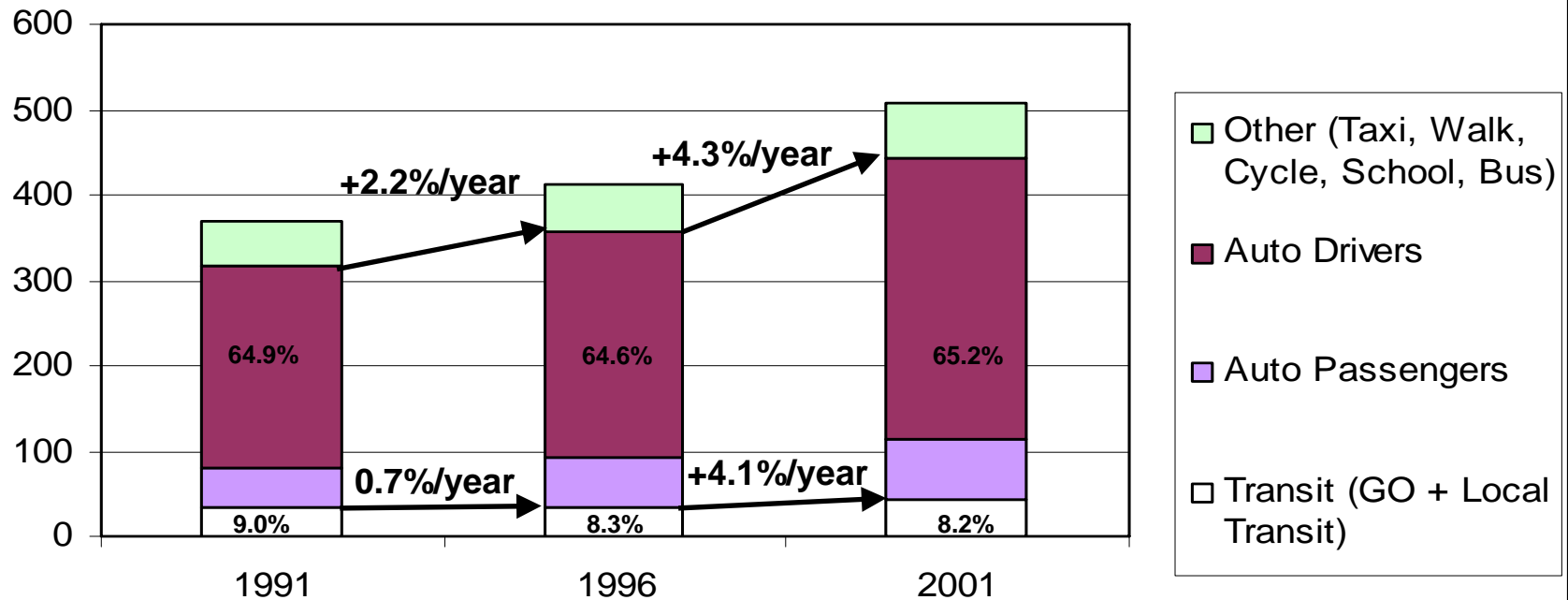


# Passenger and goods trips are growing rapidly in Peel



# Auto Trips are growing faster than Transit Trips

Peel Trip Mode Share - AM Peak (Thousands)

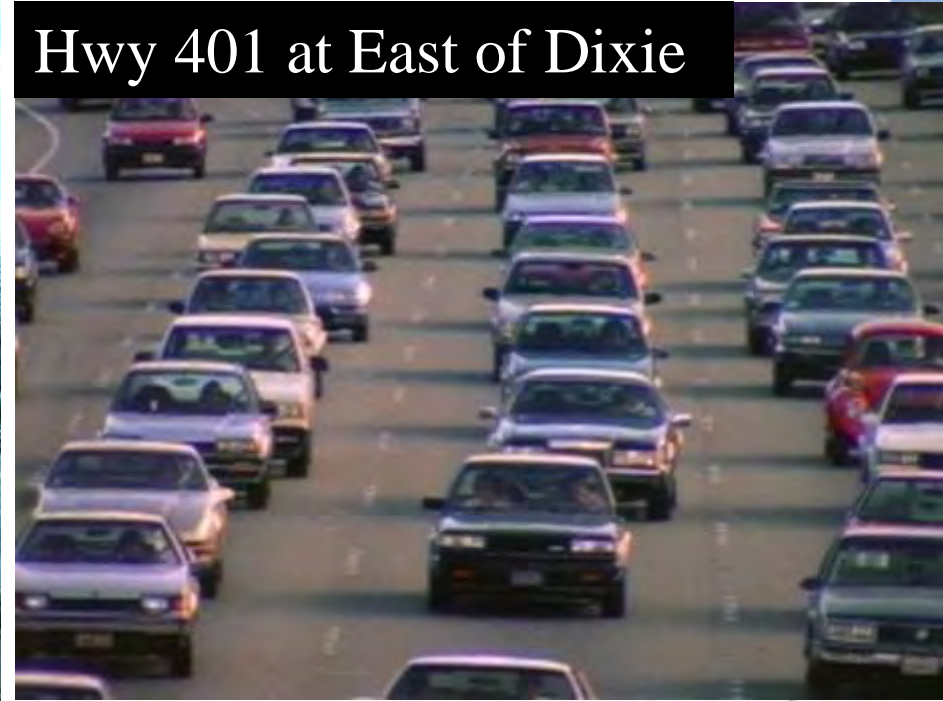


# Road Congestion is Growing Rapidly

Queen at Hwy 50



Hwy 401 at East of Dixie



Airport at Derry



Steeles at Airport

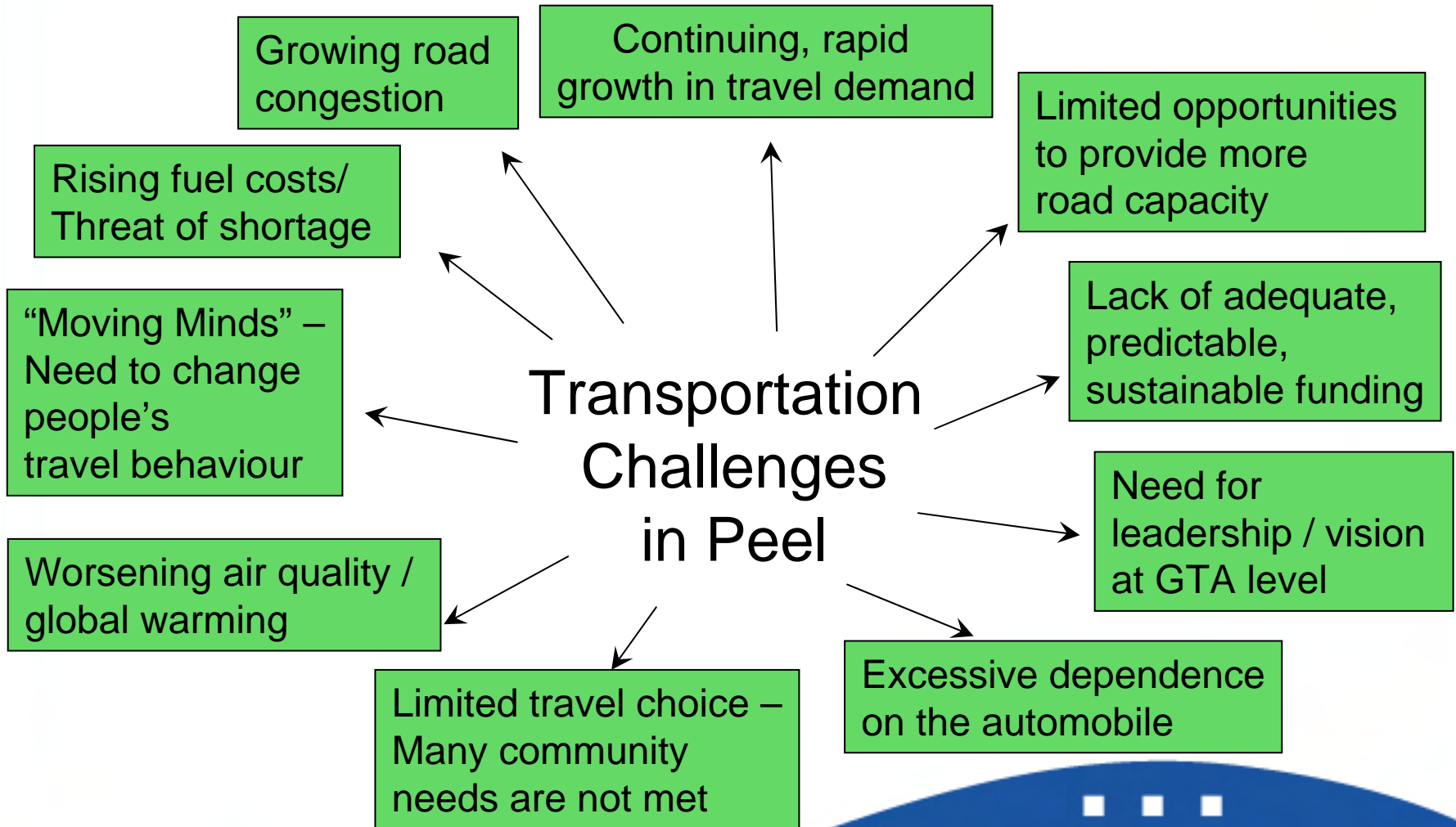


# Key Message from LRTP

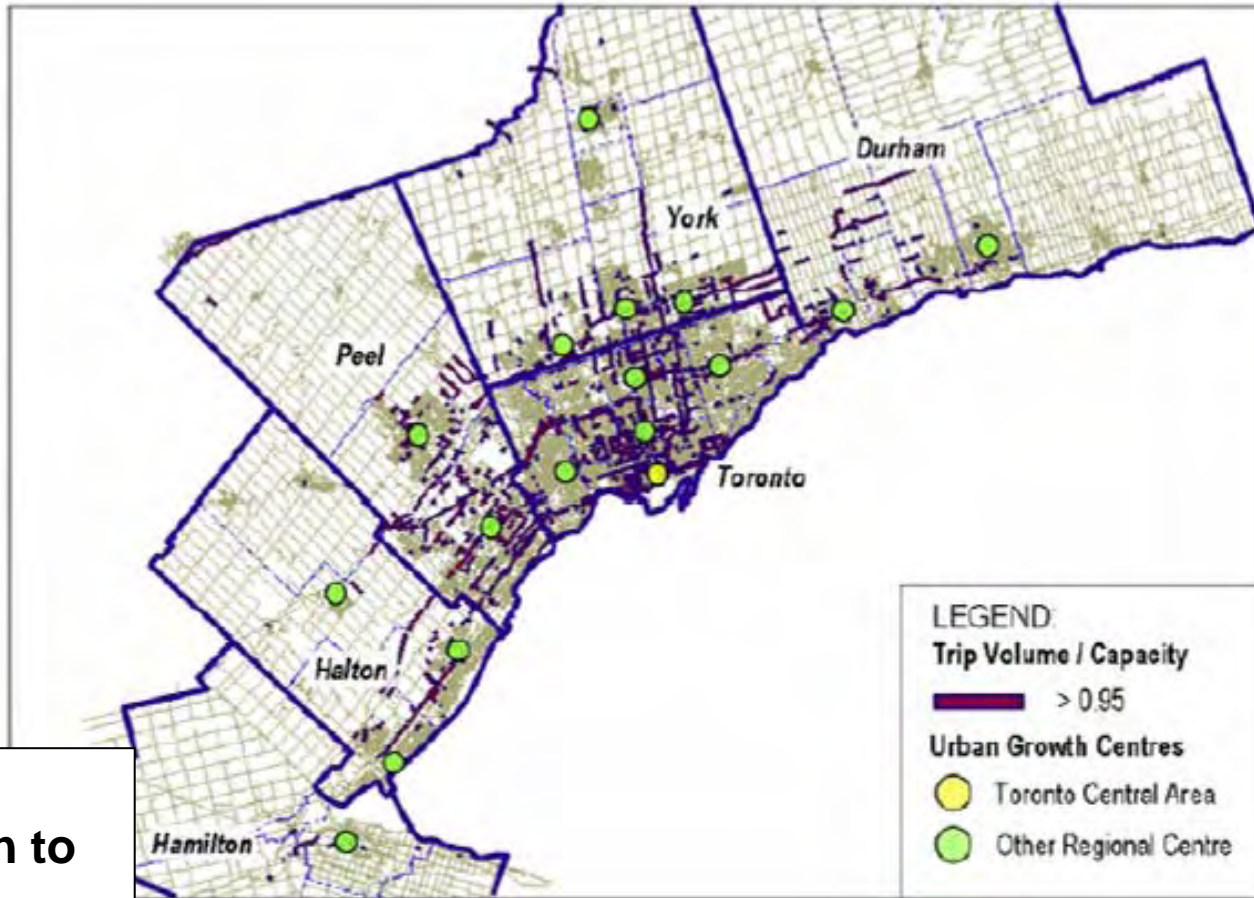
- We can't build our way out of congestion
- Accommodating future transportation in Peel requires a combination of:
  - better leadership and coordination at the GTA level
  - smarter growth; better integration of transportation and land use planning
  - vastly improved transit
  - aggressive implementation of TDM
  - planning for rapid growth in goods movement through stronger partnerships
  - better use of technology (ITS)
  - changing people's travel behaviour (education)



# The Challenges We Face

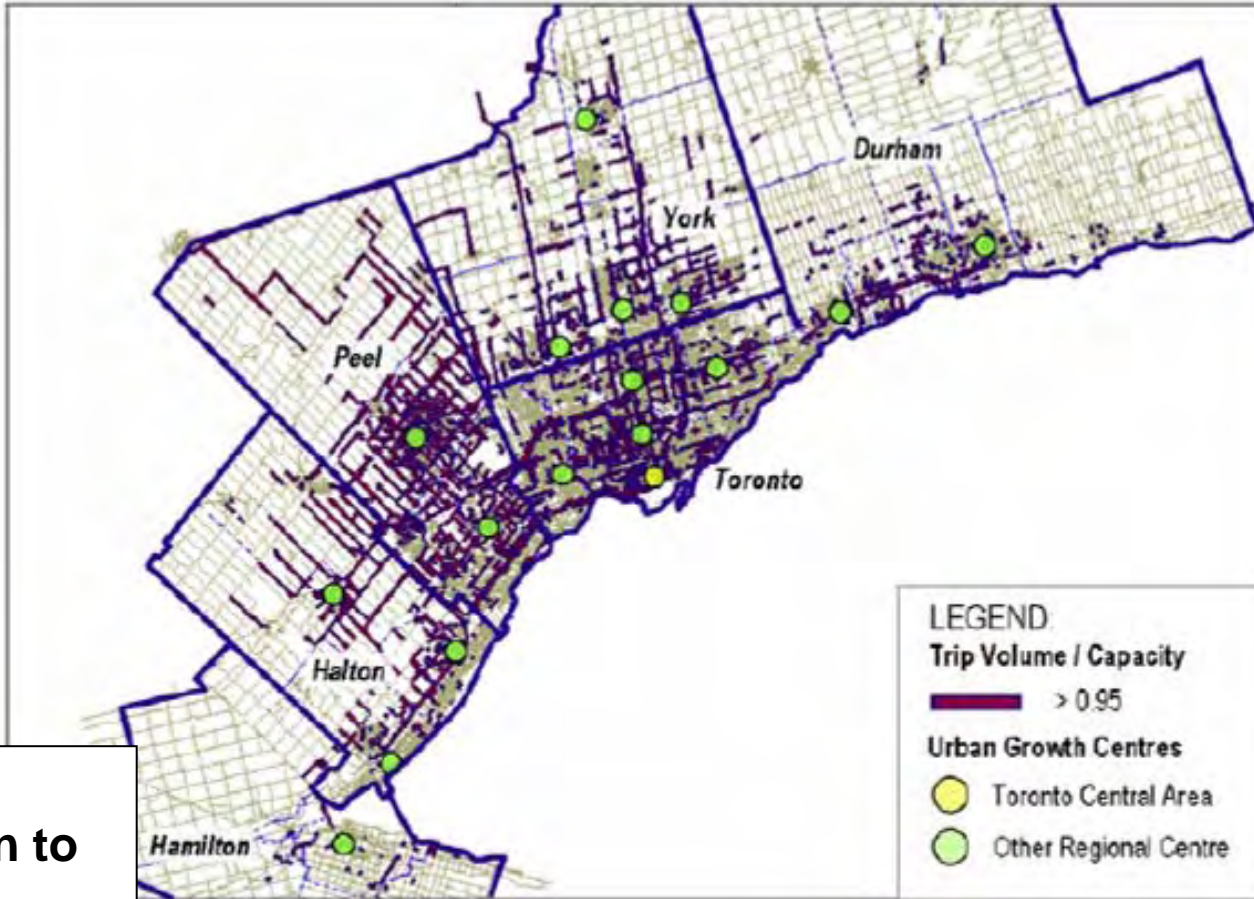


# Existing Traffic Congestion



Source:  
Presentation to  
the GTTA,  
March 2007

# 2031 Traffic Congestion



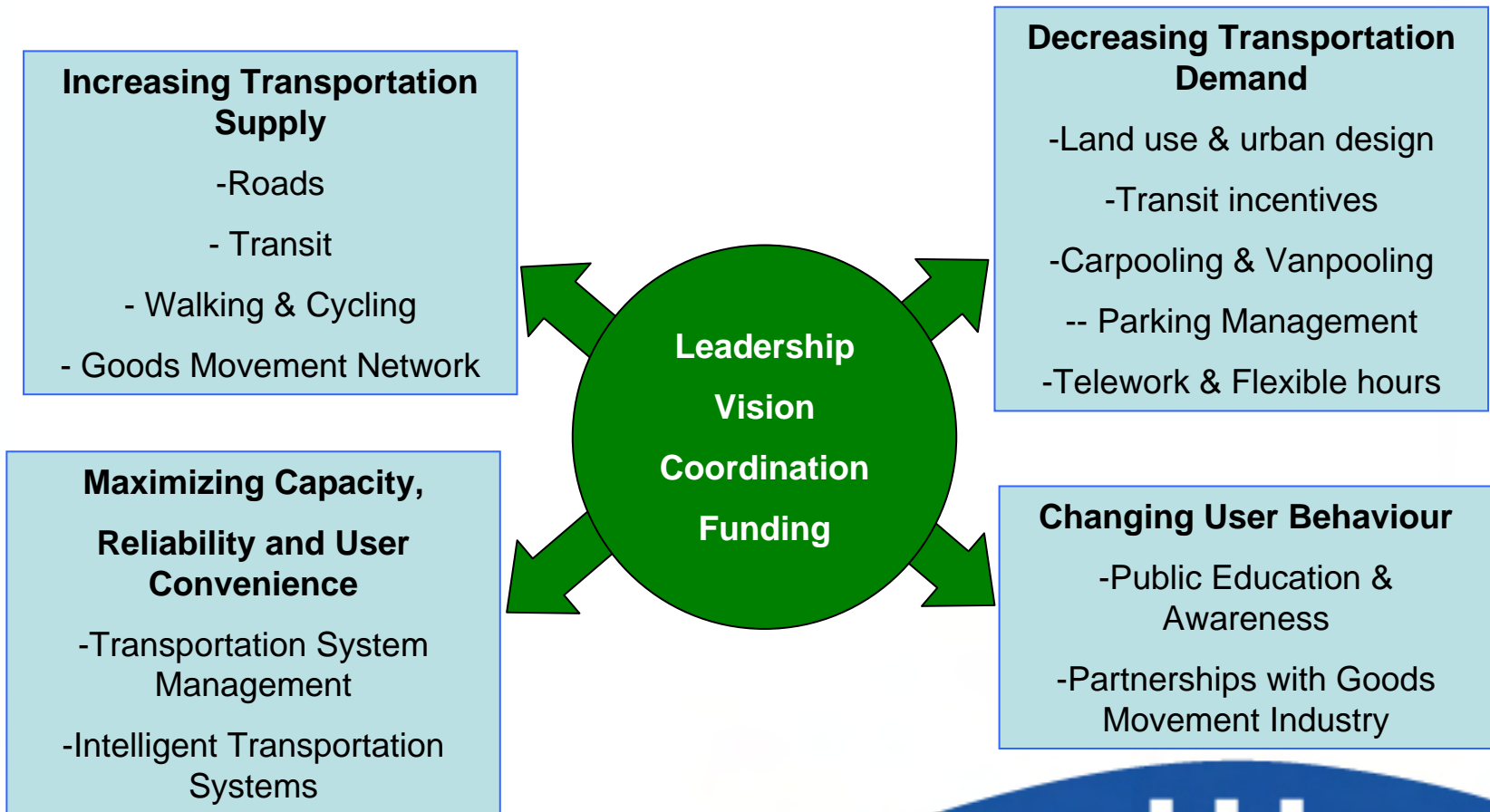
**Source:**  
**Presentation to**  
**the GTTA,**  
**March 2007**

# Intensification related challenges

- Intensification will make transit work better but will present new challenges
- Careful planning will be required to address the conflicts between transit, pedestrians, cyclists, autos and trucks
- Corridors designated for intensification are already congested and face 60%+ growth in travel demand
- We will need to be much more aggressive with:
  - transit (to increase the transit share significantly)
  - TDM (to reduce the number of cars on the road), and –
  - mixed use (to reduce the average trip length)



# We have to work on many fronts to address the transportation challenge

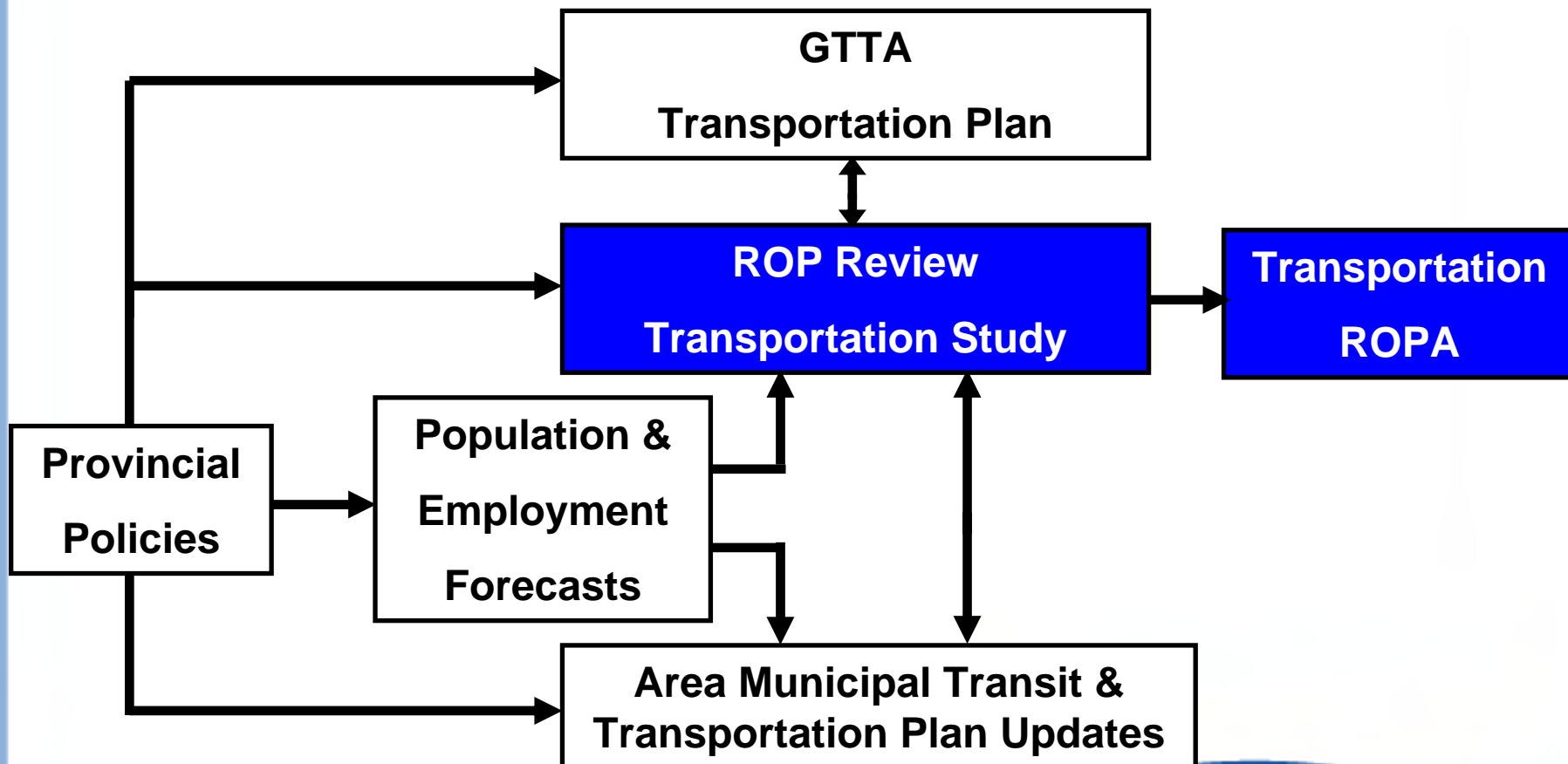


# Current Initiatives

- ROP Review Transportation Study
- Area Municipal transportation studies to address Provincial policies
- GTTA Transportation Plan
- Rapid Transit:  
Acceleride, 403/Eglinton BRT,  
Hurontario Corridor Higher Order Transit
- GO Rail  
Lakeshore West, Georgetown Line, Air Rail Link, New Stations at Lisgar, Mount Pleasant
- GO Bus  
407 service, new services to Bolton, other



# Transportation Planning to Address Growth and Intensification



# Current Initiatives (cont'd)

- 50/427 Extension Area Arterial Network Master Plan
- Halton-Peel Boundary Area Transportation Study
- 427 Extension, 410 Extension and GTA West
- MTO Highway HOV Network Plan
- Smart Commute Initiative
- Active Transportation Planning
- GTAA Master Plan



# Concluding Remarks

- ROP Review Transportation Study has been initiated to address growth and Places to Grow compatibility
- The study will be conducted in close collaboration with Area Municipal staff and in consultation with other levels of government and stakeholders
- Peel Region faces significant transportation challenges – leadership, collaboration and creativity will be key in addressing these challenges

