

RECYCLING GUIDE

Recycling is mandatory in the Region of Peel

Securely place only these items in your curbside recycling box, bag or container. Please make sure all food and drink containers are empty and rinsed.



Beverage cartons and boxes



Empty aerosol and metal paint cans
Remove paint can lids and place in recycling box. Remove aerosol caps and place in garbage



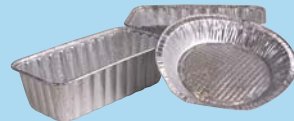
Metal food and beverage containers
Do not flatten cans



Plastic tubs and lids
Remove lids and place both tubs and lids in recycling box



Flattened cardboard boxes – not to exceed 90 cm x 90 cm (36 in. x 36 in.)
Remove plastic wrapping



Aluminum foil plates and trays
No foil wrap



Plastic bags
Place all plastic bags in one tied plastic bag



Printed paper
No shredded paper – place with yard waste or in green bin



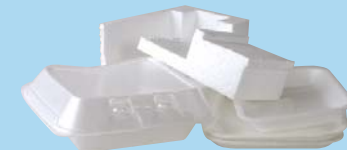
Cardboard cartons
Remove liners, empty and flatten



Glass bottles and jars
Place caps in garbage



Plastic bottles, jugs and jars
Place caps and lids in garbage



Polystyrene foam packaging

UNACCEPTABLE ITEMS FOR CURBSIDE RECYCLING ❌



Household hazardous waste (HHW)



Home health care waste
Plastic tubing for IV bags or dialysis



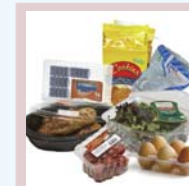
Paper and plastic takeout beverage cups and lids



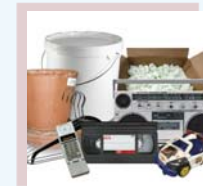
Shoes and textiles
Clothes, towels, shoes and linens



Dishes and cookware
Pots/pans, plastic cups, drinking glasses, ceramics, plastic and metal utensils, food wrapping and reusable containers



Plastics
Plastic egg cartons, clamshell and blister packaging, takeout containers and cookie/chip bags



Other Items
Household electronics, coat hangers, foam/ 'popcorn' packaging, toys, pails and plant trays

Visit wheredoesitgo.ca for instructions on how to dispose of these items.

For more information, call 905-791-9499 or visit www.peelregion.ca/waste
In Caledon, call 905-584-2216 free of charge.