

COVID-19

School decision process toolkit

Last updated October 13, 2021

School decision process toolkit

Important information

School administration can use these decision-making resources when assessing the following common scenarios.

- 1 Symptomatic student/staff
- 2 Positive COVID-19 student/staff
- 3 Close contact to a COVID-19 positive case

This resource is also available in French, and can be accessed through our [website](#).

Fully vaccinated individuals, as referenced in this document, are defined as follows:

You're fully vaccinated 14 days after receiving the last dose of a Health Canada [approved](#) COVID-19 vaccine (your second dose of a 2-dose vaccine, or a single dose of a 1-dose vaccine) or any combination of these vaccines.

You're also considered fully vaccinated 14 days after receiving:

- 1 or 2 doses of a COVID-19 vaccine not approved by Health Canada, followed by 1 dose of a COVID-19 mRNA vaccine approved by Health Canada (e.g., Pfizer or Moderna) or
- 3 doses of any COVID-19 vaccine not approved by Health Canada.

Note: If you are exposed to a person with COVID-19, your last dose must be received 14 days prior to your initial exposure.

Previously positive individuals are defined as follows:

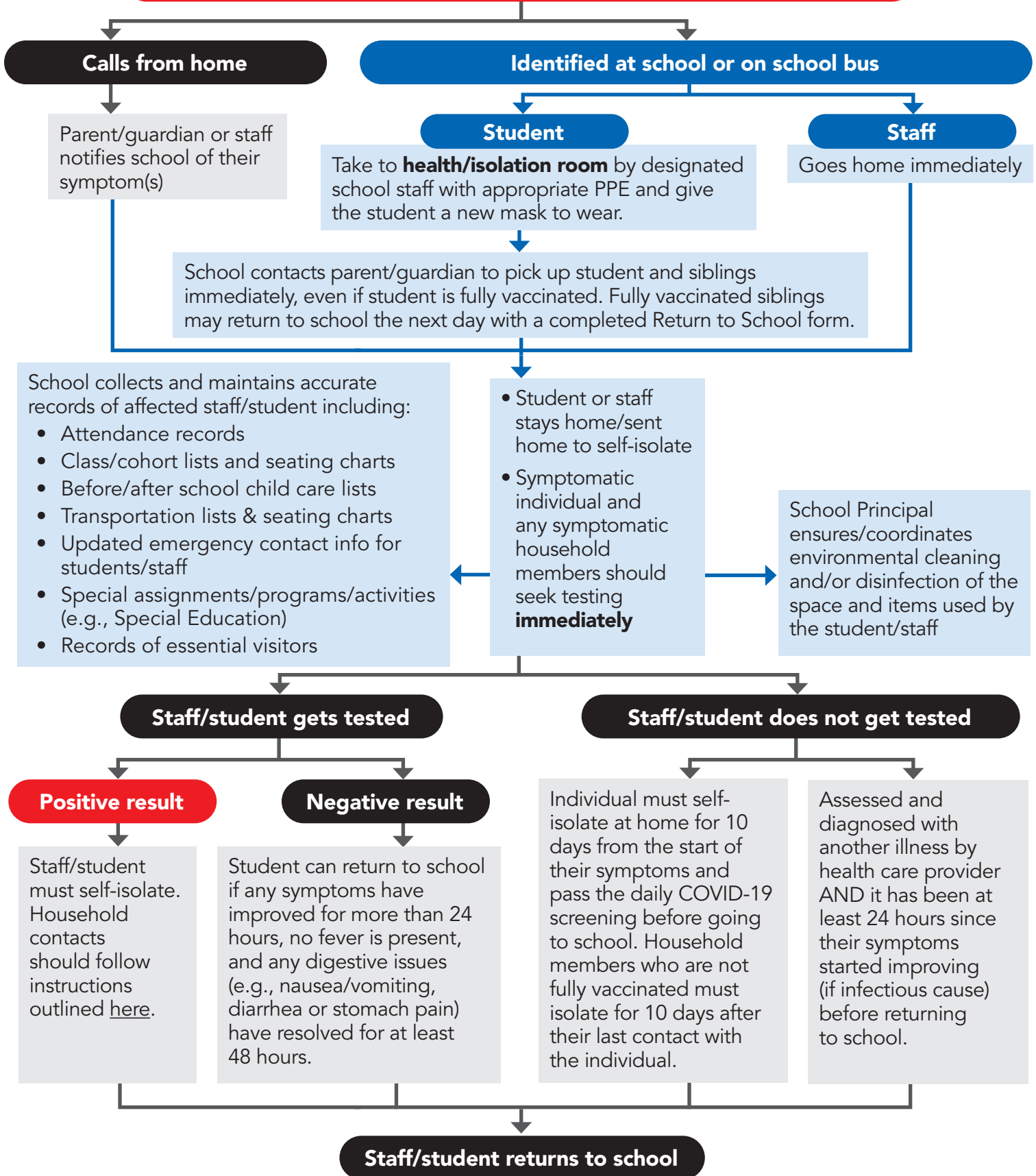
You're previously positive if all of the following apply:

- You had COVID-19 within the past 90 days
- You have recovered
- You have completed your isolation period from your initial infection

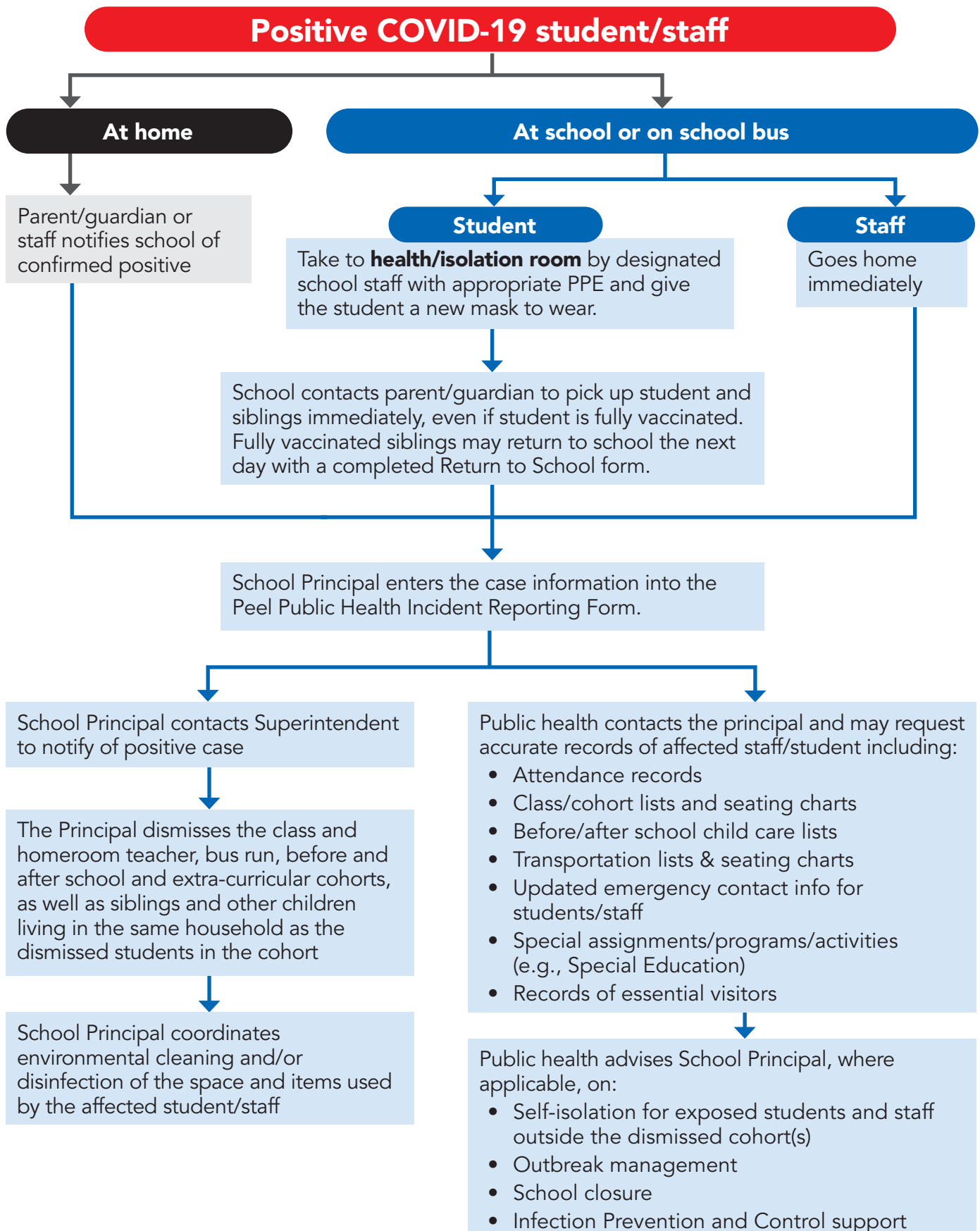
If an individual is immunocompromised, they should continue to follow all standard public health direction (e.g., self-isolate after being exposed to a person who has COVID-19), even if you are fully vaccinated or previously positive. If you have questions, speak to your health care provider.

School decision process

Symptomatic student/staff



School decision process



School decision process

